

INSTALLATION INSTRUCTIONS CANOPY HOOD



Model No: RHCV9G – VETRO WALL



(PLEASE NOTE PRODUCT MAY VARY SLIGHTLY FROM THE PICTURE)

PRE-INSTALLATION

Thank you for purchasing a quality, stainless steel canopy hood. We have a high standard of quality control and each canopy hood is tested and approved before it leaves the factory.

IMPORTANT

- Please read the entire instructions before installing the canopy hood
- Always switch the power off prior to installation, servicing or cleaning the canopy hood.
- Never use the canopy hood without the filters.
- Stainless steel is very easily damaged during installation if abraded or knocked by tools.
- Note all ducting must comply with local requirements and building codes.
- A power outlet should be within 1200mm from the motor assembly and can be either on the wall, behind the chimney or in the ceiling.



All electrical work must be done in accordance with local and/or national electrical codes as applicable. For safety, this product must be earthed. If you are unfamiliar with methods of installing electrical wiring, employ the services of a qualified electrician. Turn off power at service entrance before installing wiring or servicing this product.

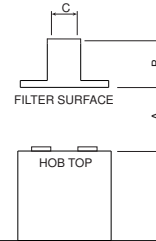


The canopy hood is heavy please ensure adequate care when installing the canopy hood to prevent personal injury. The canopy hood must be installed onto a solid wall or solid stud. (Weight = 18 Kg)

CONTENTS

Contents of packaging	Equipment Required		Optional Accessories	
1 x Canopy hood	Electric Drill	Drill bits	Charcoal Filter	2517
2 x Chimney pieces with bracket	Screwdriver	Spirit Level	Light Bulb	114313
1 x Installation instructions	Duct tape	Tape measure	Chimney Ext (10')	2194
2 x Filter (Part Number 114311)	Jig saw	Knife	Chimney Ext (12')	2195
Installation kit (Part Number 114326)	Ladder	Saw		
2 x 12 x 2" Screw				
4 x 15 Dia Washer				
2 x Wall Anchor Plastic				
2 x 8 x 1.25" Screw				
4 x M4 x 8 Pan Head Screw				

HEIGHT OF CANOPYHOOD



A=650mm(electric cook top) min
A=650mm(gas cook top) min
B=305mm
C=220mm

- The canopy hood is designed for 2400mm ceilings.
- The chimney is telescopic and is designed for hood installations between 650 to 750mm above the cooking surface.
- Ascertain the desired installation height of the canopy hood.
- Any installation above 750mm will compromise the extraction performance.
- The air outlet from the motor requires 150mm round ducting which requires 170mm diameter hole in the ceiling.

CONTROL PANEL

Timer switch: Canopy hood will remain on a low, mid or high speed for 15 minutes to clear away all residual cooking odours before switching off automatically.



Timer Speed settings Lights

WALL/CEILING PREPERATION

RECIRCULATION

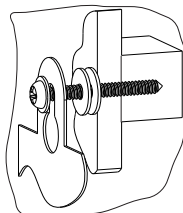
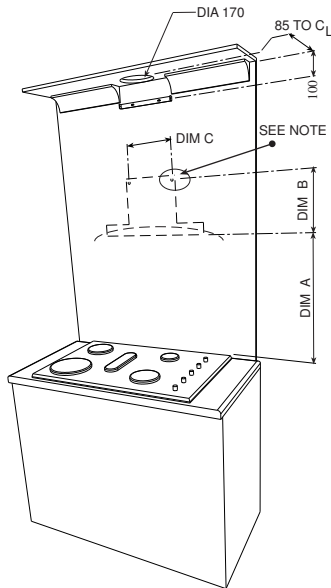
For recirculation, do not cut 170mm hole and purchase a charcoal filter.

For other accessories, parts and service, please contact your local supplier or approved service agent

DUCTED

For ducted installation, it is recommended you use 150mm diameter rigid / semi rigid ducting this will require a 170mm hole in the ceiling / wall.

Before drilling any holes check the area behind the surface to be drilled is clear of any electrical cables, pipes etc.



NOTE: Fixing to a solid stud is recommended.

1. Pre drill pilot hole 3mm diameter at dimensions C and B.
B=305mm and C=220mm.
2. Loosely fix the mounting screw and 2 x washer in position, check with a spirit level across the washers to ensure they are level.
3. Mark the position of the decorative chimney at the ceiling and wall. Cut the cornice moulding away if required, to enable the chimney to fit flush against the wall and ceiling.
4. Mark and cut out the hole in the ceiling / wall to fit the ducting. (170mm dia.) This is positioned centrally above the canopy hood and 85mm from the wall. (For ceiling option)

5. Using the screws supplied, fix the chimney bracket to the wall, 100mm below the ceiling checking that it is aligned with the hood.
6. Remove the protective plastic covering from all parts including the filters. Fit the canopy hood on the mounting screws, tighten screws. Plug in the power cord to the supply and check the function of the canopy hood. Connect and secure the ducting (use duct tape if required).
7. Assemble the top chimney to the chimney bracket and fix using the screws supplied, then assemble the bottom chimney to the canopy hood and fit into the glass recess.
8. Remove transport tape that holds the oil cup in place under the motor unit and fit the filters.

MAINTENANCE

Particular care must be taken with the grease filters which must be periodically cleaned (at least every two months). Remove the grease filters and wash them either by hand using hot soapy water or in the dishwasher using mild detergent. Note- some discoloration of the frame may occur. Caution: Never use abrasive or oil based liquid cleaners. To clean the stainless steel and glass components of the appliance use mild detergent and warm water. In areas of high humidity and coastal environments cleaning should be carried out frequently.

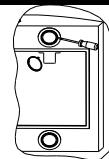
In the case of charcoal filters, these are disposable items and it is recommended that these be replaced every 2-4 months depending on the use of the canopy hood.

For other accessories, parts and service, please contact your local supplier (Refer to the Warranty Certificate).

LIGHT REPLACEMENT

(Halogen bulb 12 Volts/10 Watt)

1. Switch off the power to the canopy hood and allow the bulb to cool.
2. Use a small bladed screwdriver to prise off the light cover, taking care not to damage the surrounding material.
3. Use a cloth to remove the bulb.
4. Replace with a new bulb using a cloth. **Do not touch the bulb with fingers.**
5. Snap the cover back in place.



WARNINGS

- This canopy hood is not intended for use by young children or infirm persons without supervision.
- Young children should be supervised to ensure that they do not play with the canopy hood.
- There shall be adequate ventilation of the room when the canopy hood is used at the same time as appliances burning gas or other fuels. (A partial vacuum in the room could result in too high a concentration of gas in the air)
- You must read the details concerning the method and frequency of cleaning (see maintenance).
- There is a fire risk if cleaning is not carried out in accordance with the instructions.
- Do not flambé under the canopy hood.
- Exhaust air must not be discharged into an existing flue which is used for exhausting fumes from appliances burning gas or other fuels
- The minimum distance between the hob surface and the filters of the canopy hood shall be 650mm.
- Attention should be given to ensure that any applicable regulations concerning the discharge of exhaust air is fulfilled.
- If the supply cord of this equipment is damaged it must only be replaced by the manufacturer, its service agent or similarly qualified person in order to avoid a hazard.



New Zealand: Robinhood Ltd
Tel: 0800 760 667 Fax: 0800 276 246
Email: enquiries@robinhood.co.nz
www.robinhood.co.nz

Australia: Robinhood Australia Pty Ltd ACN
Tel: 1800 648 556 Fax: 1800 628 577
Email: enquiries@robinhood.co.nz
www.robinhood.com.au

ISO 9001/2000 certification


RANGEHOOD DUCTING

RECOMMENDED DUCTING
SYSTEM FOR RANGEHOODS