

Description: **ROBINHOOD 60CM BUILT-IN OVEN 5 FUNCTIONS DIGITAL TIMER**

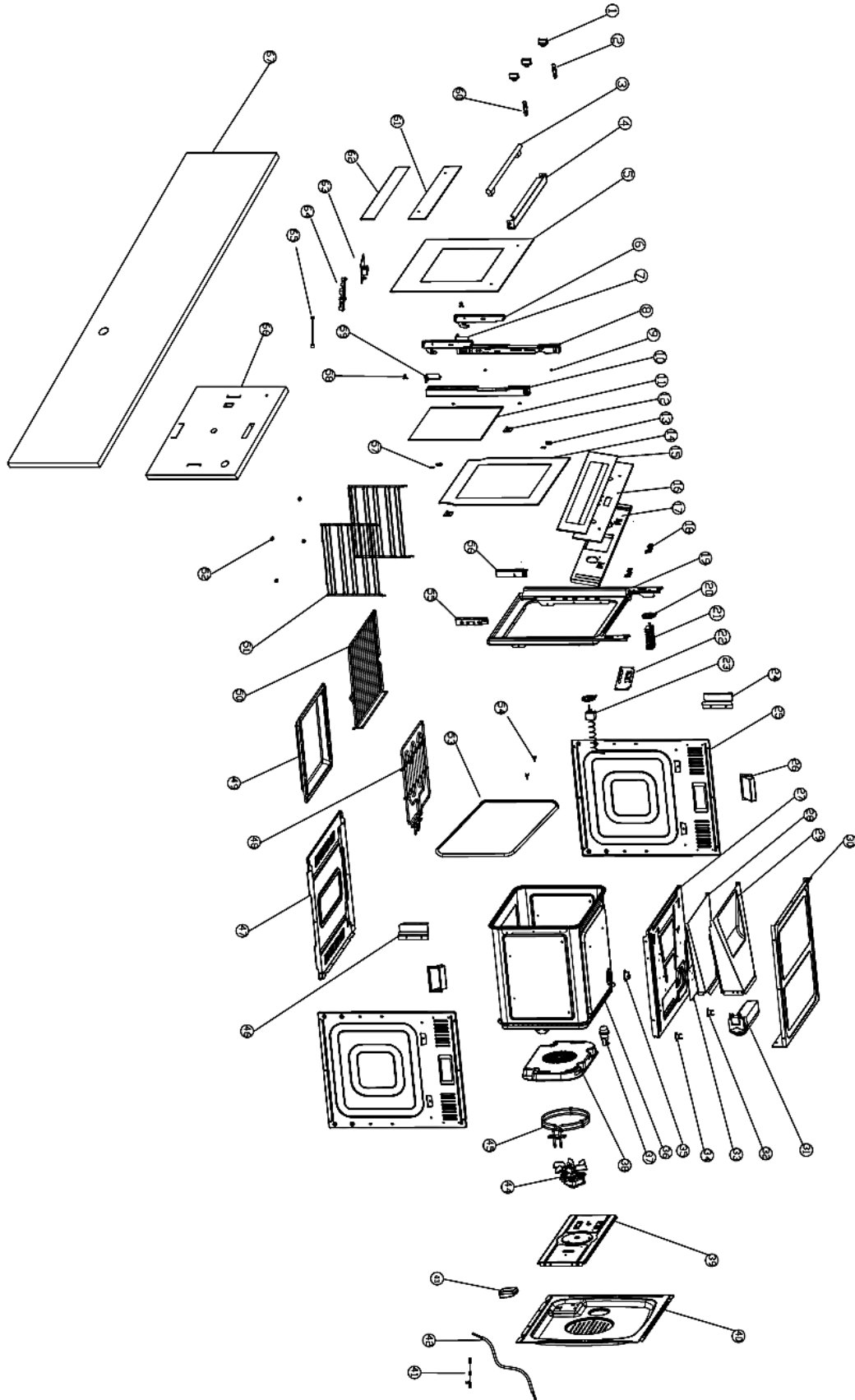
Model Number: **RHBO65DX**



Model pictured: **RHBO65DX**

Model & Parts may vary slightly from images

Exploded view



Model & Parts may vary slightly from images pictured

Parts List

SEQ	PART NO.	QTY in Product	DESCRIPTION
1.00	2301000025	2	KNOB
2.00	2400600045	1	GREEN INDICATOR LIGHT
3.00	2300500045	1	HANDLE FOR DOOR
4.00	2150100098	1	TOP DOOR BRACKET
5.00	2550200009	1	OUTER GLASS
6.00	2301500029	2	HINGE ASSEMBLY(SET)
7.00	2150100099	1	METALLIC FIXATION LEFT FOR HINGE
8.00	2150100096	1	LEFT SUPPORT FRAME FOR DOOR
9.00	220010600058	4	INNER GLASS CUSHION
10.00	2150100097	1	RIGHT SUPPORT FRAME FOR DOOR
11.00	2550500009	1	DOOR MIDDLE GLASS
12.00	2130200107	2	INNER GLASS BUCKLE
13.00	2130600245	2	INNER GLASS PRESSER
14.00	2551000012	1	INNER GLASS
15.00	2139900098	1	FRONT PANEL
16.00	2550100343	1	CONTROL PANEL GLASS
17.00	2150100095	1	CONTROL PANEL FIXATION
18.00	2130600359	2	INDICATOR LIGHT BRACKET
19.00	2170100052	1	DOOR FRAME
20.00	220010400008	2	SWITCH FIXATION
21.00	2400300045	1	OVEN SELECTOR
22.00	D800400093	1	DISPLAY BOARD
23.00	2402500065	1	THERMOSTAT OVEN
24.00	2130600242	1	LEFT CONNECTOR
25.00	2130600243	2	SIDE PANELS FOR RIGHT AND LEFT
26.00	220010100004	2	HANDLE FOR RIGHT AND LEFT
27.00	2130600234	1	UPPER HEAT SHIELD
28.00	2130600049	1	AIR DEFLECTOR
29.00	2140400006	1	COOLING FAN COVER
30.00	2130600316	1	UPPER TOP PLATE
31.00	2400200027	1	COOLING FAN
32.00	2402500022	1	THERMOSTAT N/C
33.00	2130600244	1	WIND SHIELD
34.00	2402500023	1	THERMOSTAT N/O
35.00	2130600241	1	EXHAUST PIPE
36.00	2170200042	1	CAVITY ASSEMBLY (SET)
37.00	2400600013	1	OVEN LAMP ASSEMBLY (SET)
38.00	2170100053	1	FAN COVER
39.00	2130600235	1	REAR MOTOR BRACKET
40.00	2130600339	1	REAR COVER
41.00	2402700175	1	INTERNAL CABLE
42.00	2400400097	1	EXTERNAL POWER CORD
43.00	2402000002	1	TERMINAL BOX
44.00	2400200028	1	BACK FAN ASSEMBLY (SET)
45.00	2400100057	1	BACK HEAT ELEMENT
46.00	2130600243	1	RIGHT CONNECTOR
47.00	2130600232	1	BASE PANEL
48.00	2400100103	1	TOP HEAT ELEMENT
49.00	2170100023	1	UNIVERSAL PAN
50.00	2300100056	2	OVEN RACK
51.00	2300100057	2	LEFT AND RIGHT SIDEBOARD
52.00	2309900024	4	GLIDEWHEEL
53.00	220010600059	1	DOOR SEAL SILICONE
54.00	2139900008	2	CLIP
55.00	2130600240	1	RIGHT HINGE FIXATION
56.00	2130600239	1	LEFT HINGE FIXATION
57.00	220010600002	2	INNER GLASS PRESSER GASKET
58.00	2309900028	2	SPRING CLIP
59.00	2150100099	1	METALLIC FIXATION LEFT FOR HINGE
60.00	2400600044	1	RED INDICATOR LIGHT
61.00	2139900010	1	DOOR FRONT PANEL
62.00	2139900103	1	TOP DOOR FRONT PANEL
63.00	D800300063	1	POWER SUPPLY BOARD
64.00	220010400016	1	PCB BOARD BRACKET
65.00	D410100025	1	WIRING
66.00	2553500022	1	INSULATION COTTON FOR REAR
67.00	2553500021	1	INSULATION COTTON FOR CAVITY

Note: Some components are not available outside production

New Zealand

Monaco Corporation Ltd
 Telephone: (09) 415 6000
 Facsimile: (09) 415 7400
 Email: enquiries@robinhood.co.nz
 www.robinhood.co.nz

Australia

Shriro Australia Pty Ltd
 (ABN 28 002 386 129)
 Telephone: 1800 648 556
 Facsimile: 1800 628 577
 Email: enquiries@robinhood.com.au
 www.robinhood.com.au