

RGT - SERIES

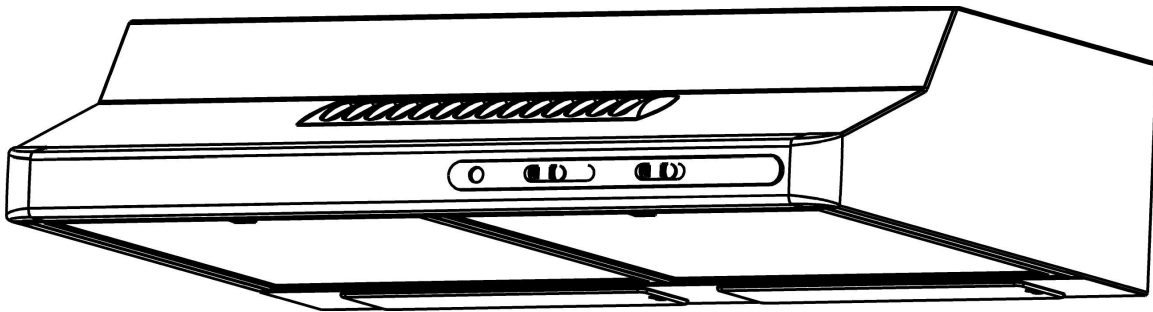


GRANGE II RANGE HOOD

MODEL

RGT6WH, RGT6BL, RGT6SS

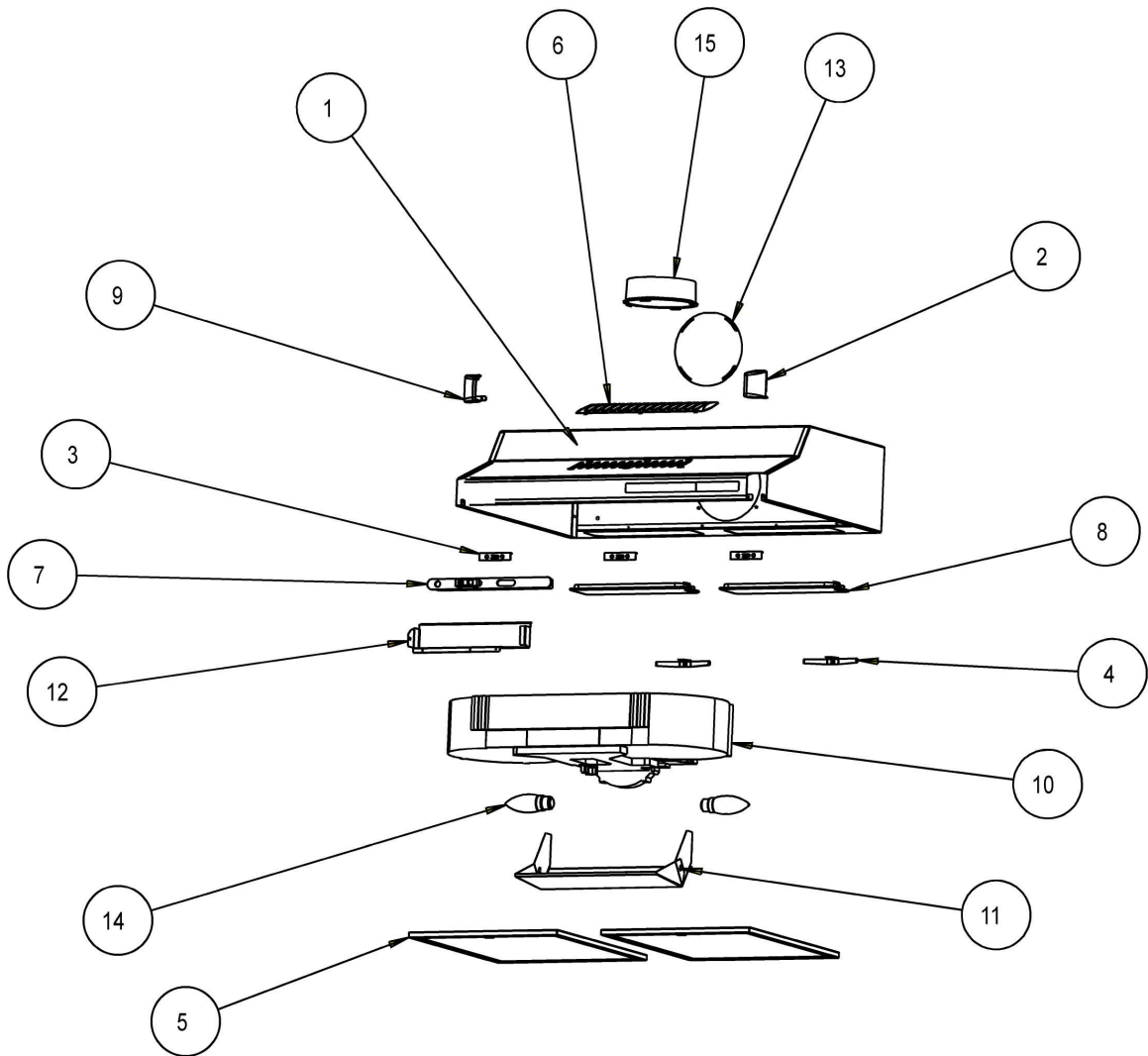
RGT9WH, RGT9BL, RGT9SS



SERVICE MANUAL

RGT - SERIES

**RGT6WH, RGT6BL, RGT6SS
RGT9WH, RGT9BL, RGT9SS**



RGT - SERIES

ROBINHOOD GRANGE II

RGT6WH, RGT6BL, RGT6SS GRANGE II 600 – 3 SPEED
RGT9WH, RGT9BL, RGT9SS GRANGE II 900 – 3 SPEED

ITEM	DESCRIPTION	PART No.		
		WHITE	BLACK	S/STEEL
1	Body Wrapper			
2 & 9	Corner Plastic Family	101150WH	101150BL	101150BL
3	Filter Channel Clear	103709	103709	103709
4	Filter Spring	101221	101221	101221
5	Filter Aluminium 288 x 362.5	103793	103793	103793
	Filter Charcoal 288 x 362.5	103793C	103793C	103793C
6	Recirculating Cover	103854WH	103854BL	103854BL
7	3 Speed Switch Assembly	103417WH.SP	103417BL.SP	103417BL.SP
8	Diffuser	101112	101112	101112
10	Twin Motor Housing	103853	103853	103853
11	Recirculating Duct	103915	103915	103915
12	Switch Cover 600mm	103921	103921	103921
12	Switch Cover 900mm	103848	103848	103848
13	Duct Blanking Disk	103924	103924	103924
14	Lamp 40Watt Candle Shape	102722	102722	102722
15	Duct Adaptor	110030	110030	110030

RGT - SERIES

SECTION 1.

MOTOR REMOVAL AND REPLACEMENT

- 1.1 REMOVE THE UNIT FROM ITS MOUNTING.
- 1.2 REMOVE THE FILTERS.
- 1.3 REMOVE DIFFUSER AND LIGHT BULB.
- 1.4 REMOVE REAR OR TOP BLANKING DISK.
- 1.5 REMOVE THE SWITCH BRACKET.
- 1.6 REMOVE SWITCH ASSEMBLY FROM THE SWITCH BRACKET.
- 1.7 REMOVE THE LID OF THE SWITCH ASSEMBLY DISCONNECT THE WIRES FROM THE BACK OF THE SWITCH.
- 1.8 REMOVE THE VENT DUCT.
- 1.9 REMOVE THE MOTOR SECURING SCREWS (TWO SCREWS AT THE REAR OF THE UNIT).
- 1.10 LIFT MOTOR HOUSING FRONT EDGE, DRAW POWER CABLE THROUGH BACK.
- 1.11 REMOVE MOTOR HOUSE FROM BODY.
- 1.12 REASSEMBLE RANGEHOOD IN REVERSE TO PROCEDURE ABOVE, TAKING CARE TO PULL AS MUCH OF THE POWER CORD OUT OF THE BODY AS POSSIBLE.
- 1.13 TEST TO ELECTRICAL SAFETY STANDARDS.

SECTION 2.

SWITCH REPLACEMENT

- 2.1 REMOVE THE SWITCH BRACKET.
- 2.2 REMOVE SWITCH ASSEMBLY FROM THE SWITCH BRACKET.
- 2.3 REMOVE THE LID OF THE SWITCH ASSEMBLY DISCONNECT THE WIRES FROM THE BACK OF THE SWITCH.
- 2.4 REPLACE WITH NEW SWITCH, CHECK WIRING AS PER WIRING DIAGRAM, AND THAT SWITCHES ARE IN THE CORRECT POSITION.
- 2.5 REASSEMBLE SWITCH ASSEMBLY AND BRACKET IN REVERSE TO PROCEDURE ABOVE
- 2.6 TEST TO ELECTRICAL SAFETY STANDARDS.

RGT - SERIES

SECTION 3.

POWER CORD REPLACEMENT

- 3.1 REMOVE MOTOR HOUSING AS PER THE INSTRUCTIONS IN SECTION 1
- 3.2 REMOVE THE TOP COVER (3 SCREWS).
- 3.3 REMOVE THE CABLES FROM THE CONNECTOR BLOCK .
- 3.4 PULL OUT POWER CORD AND RECONNECT NEW CORD.
- 3.5 CARRY OUT EARTH TEST BEFORE CONNECTING TO POWER
- 3.6 REPLACE IN REVERSE ORDER AS ABOVE
- 3.7 TEST TO ELECTRICAL SAFETY STANDARDS

RGT - SERIES

WIRING DIAGRAM

