

# How to Use Hand Tools to Apply 5/32" Eyelets

Eyelets can be used on so many projects – clothing, accessories, home decor and crafts to name a few. They can be used with fabric or thick paper. One-part eyelets are the simplest and can be applied with simple hand tools or a pliers. Our tutorial will show you how to use the hand tools.

The measurement indicates the interior diameter. A 5/32" eyelet has a center opening of 5/32".

## You will need the following:

- Your project, hemmed
- 5/32" eyelets, #104, #637
- Eyelet tool, #104T  
Note: The #637-65 kit includes a tool.
- Straight pins – any style
- Marking pencil
- Hammer
- Sharp scissors

Optional:  
Fray Check®

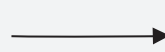
### What are the parts called?

#### Eyelet:

The eyelet is one piece

The shaft of the eyelet is called the post

Eyelet



#### Tools:

Setter

Anvil



### ALTERNATE NAMES

*Did you know that eyelets are often called grommets? Smaller sizes are traditionally referred to as eyelets, while larger sizes are usually called grommets, but don't let the name fool you. Packaging names seem to be interchangeable! Choose the size you want for appearance and use, no matter what they are called.*

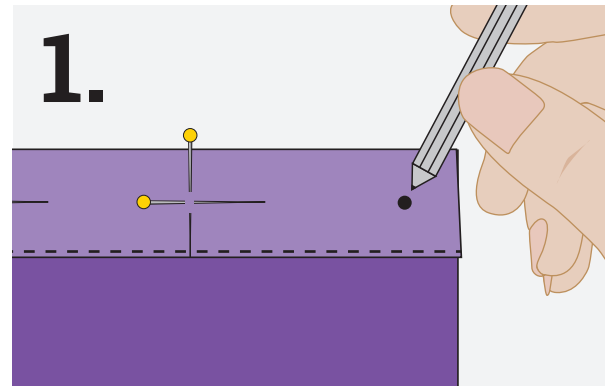


## TECHNIQUE TUTORIAL

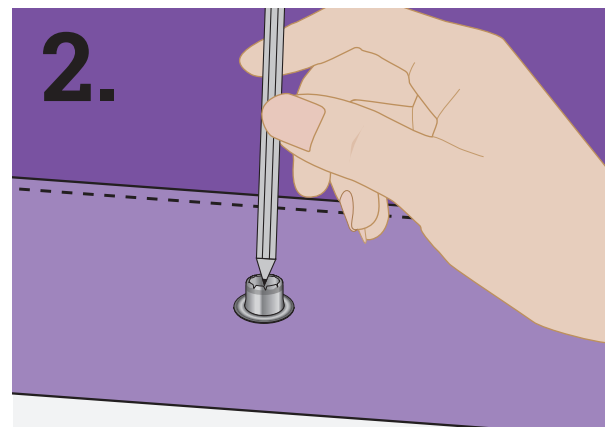
---

### How to Use Hand Tools to Apply 5/32" Eyelets:

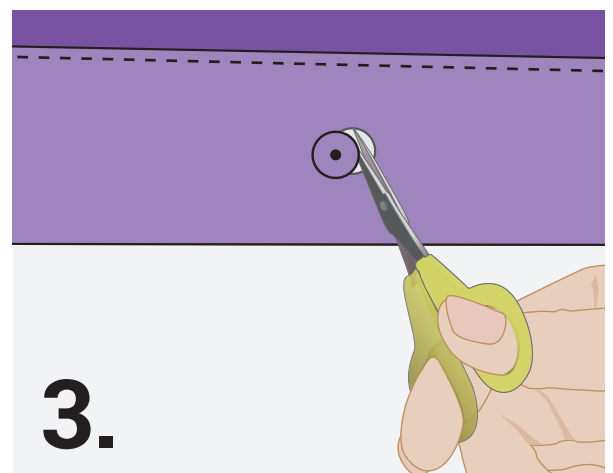
1. You have measured your project and placed a pin at each eyelet location. (See the tutorial – “How to Measure for Grommet and Eyelet Placement.”) Now, place a mark at each pin intersection.



2. Trace around inside opening of eyelet post at each marked location.



3. Since eyelet is so small, it may be difficult to mark the circle at its full size. Use a sharp pair of scissors to cut out first marked circle. Test size by pushing eyelet post through hole. Adjust it a bit if necessary, but a tight fit is good. Then cut remaining marked circles.



**TIP: For fabric that ravels easily, apply Fray Check® to cut edges of marked circle.**



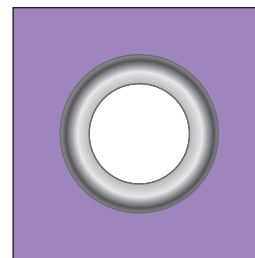
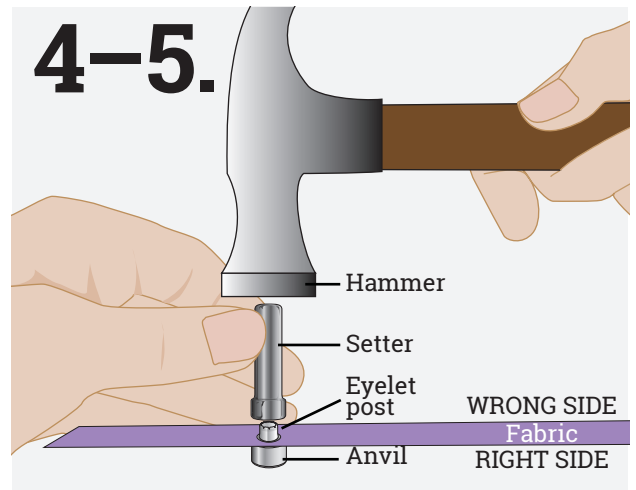
# TECHNIQUE TUTORIAL

---

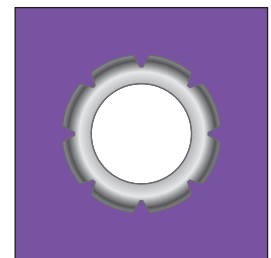
## How to Use Hand Tools to Apply 5/32" Eyelets:

4. Always work on a firm, protected surface. Insert post of eyelet through hole from right to wrong side. Place grooved end of setter into post.

5. Holding setter straight and perpendicular to eyelet, hammer until post rolls over securely against fabric.



RIGHT SIDE  
OF FINISHED  
EYELET



WRONG SIDE  
OF FINISHED  
EYELET

