

How to Use Hand Tools to Apply 1/4" Large Eyelets

One-quarter inch eyelets are the perfect size for lacing up vests, jackets and corsets. They are also great for bags and crafts. Hand tools make them easy and quick to apply.

The measurement indicates the interior diameter. A 1/4" eyelet has a 1/4" center opening. This eyelet consists of two parts – a front and a washer (shallow back).

The words eyelets and grommets are often used interchangeably. When planning a project, check products listed under both names to ensure you have the widest choice of styles, sizes and finishes.

You will need the following:

- Your project, hemmed
- 1/4" eyelets, #33575 or #659
- Eyelet tools, #33575T
NOTE: Kits #659-35 and #659-65 include hand tools.
- Straight pins – any style
- Marking pencil
- Hammer
- Sharp scissors

Optional:
Fray Check®

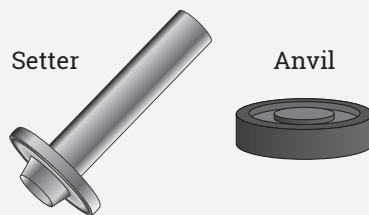
What are the parts called?

Eyelet:

The shaft of the eyelet is called the post



Tools:



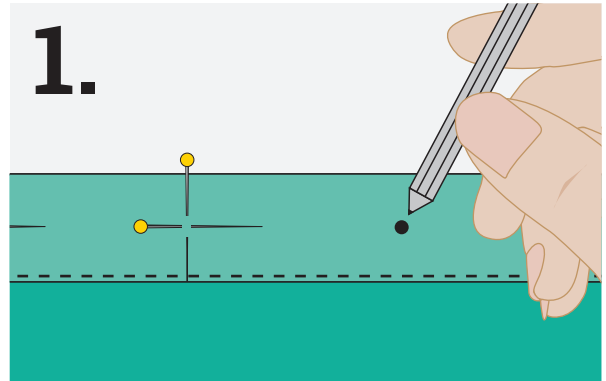
TIP: Always test the eyelet on a scrap of fabric that matches the thickness of your project. If the eyelet appears loose, add additional thickness. If the eyelet does not penetrate the thickness, choose a larger size eyelet or grommet.



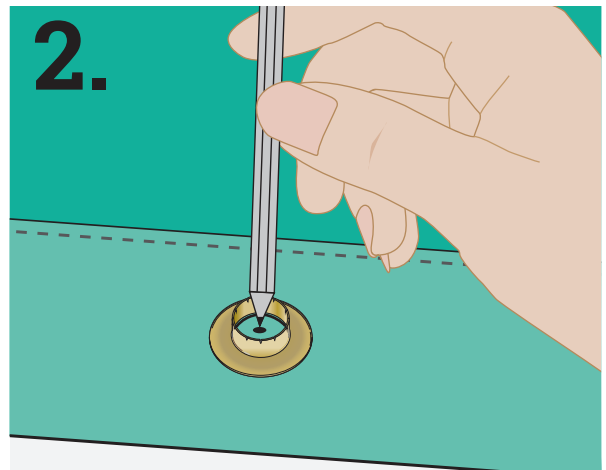
TECHNIQUE TUTORIAL

How to Use Hand Tools to Apply 1/4" Large Eyelets:

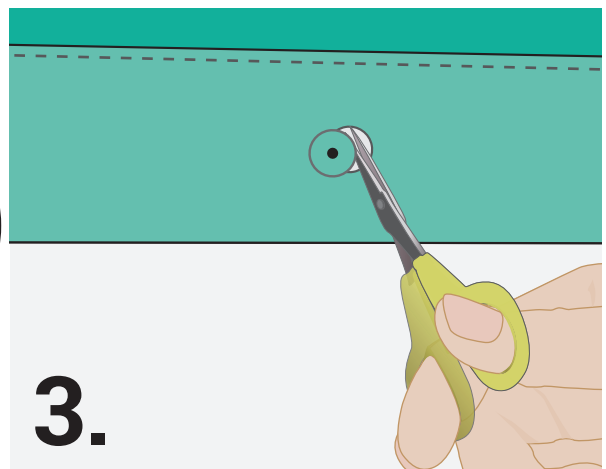
1. You have measured your project and placed a pin at each eyelet location. (See the tutorial – “How to Measure for Grommet and Eyelet Placement.”) Now, place a mark at each pin intersection.



2. Mark position of eyelet by tracing around inside opening of eyelet.



3. Use small scissors to cut out marked circle.



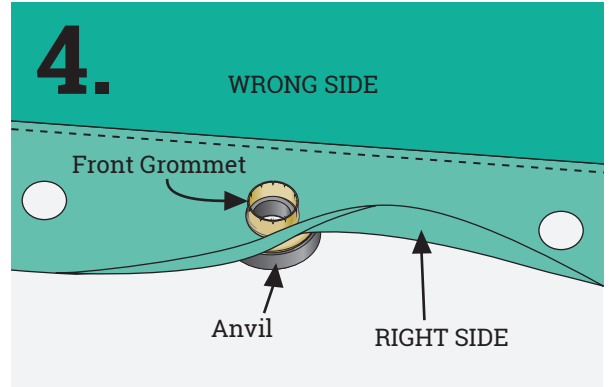
TIP: For fabric that ravels easily, apply Fray Check® to cut edges of marked circle.



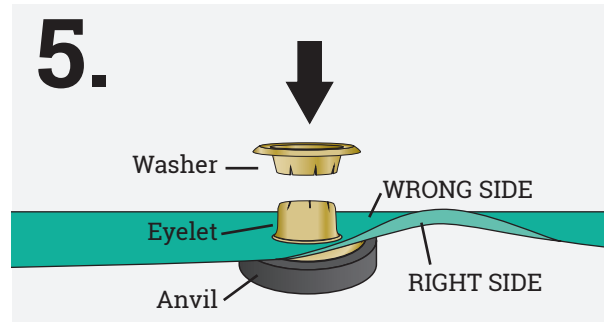
TECHNIQUE TUTORIAL

How to Use Hand Tools to Apply 1/4" Large Eyelets:

4. Insert front eyelet into hole from right side to wrong side. Slide anvil under inserted eyelet. The top, rounded side of front eyelet should sit in center of concave anvil with post of eyelet extending through hole.



5. Slip washer over post of front eyelet, with post of washer facing down.



6. Place setter tool into post of front eyelet and hit firmly. Washer and front eyelet will curl together to finish eyelet.

