

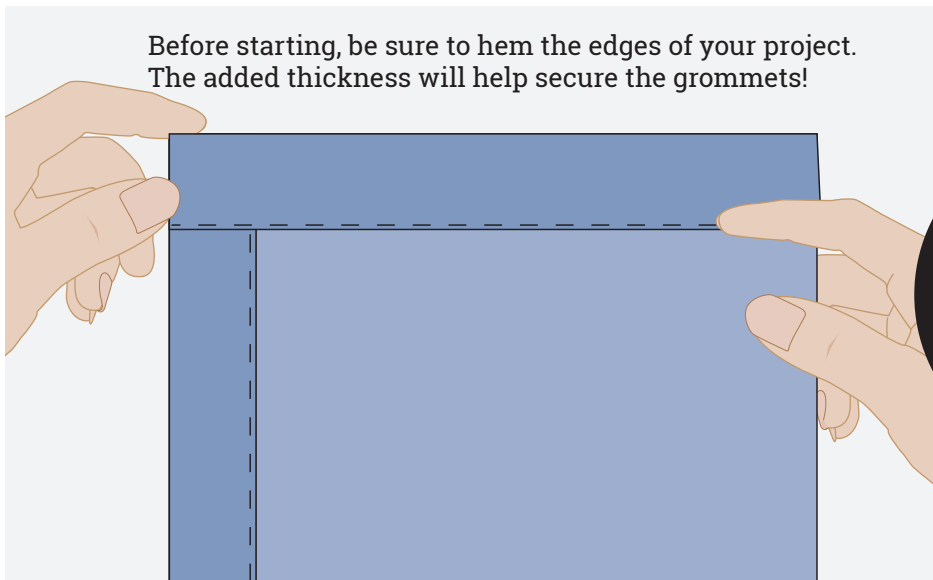
# How to Measure for Grommet and Eyelet Placement

Grommets and eyelets are available different sizes. The larger the grommet or eyelet, the farther apart they usually are. You also need a bit more distance to the edge of the fabric with larger sizes.

How many grommets or eyelets do you need? This depends on your project; the number can vary greatly. Grommets and eyelets are often used decoratively. In this case any quantity will work. For projects requiring lacing or individual hooks, the available space may dictate the number required. If grommets are planned for a curtain using a rod, the quantity can vary, but the total should be an even number.

## You will need the following:

- Your project, hemmed
- Grommets/eyelets
- 60" long tape measure
- Dritz® See-Thru Ruler
- Straight pins – any style
- Marking pencil



**TIP:**  
Ideally the hem size should be double the outer measurement of the grommet, but this can vary depending on your project.

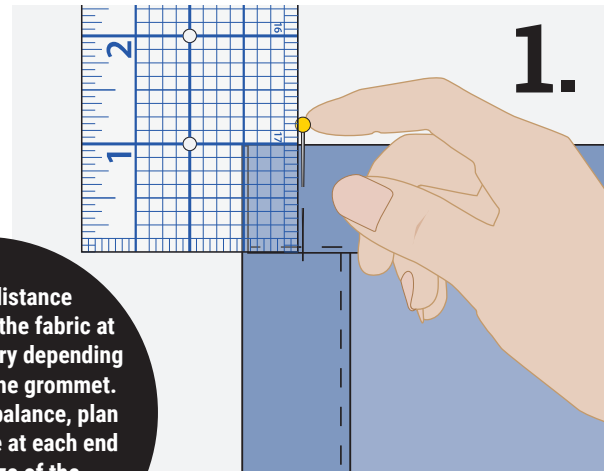
## ALTERNATE NAMES

*Did you know that grommets are often called eyelets? Smaller sizes are traditionally referred to as eyelets, while larger sizes are usually called grommets, but don't let the name fool you. Packaging names seem to be interchangeable! Choose the size you want for appearance and use, no matter what they are called. For simplicity, we will refer to them all as grommets for this tutorial.*



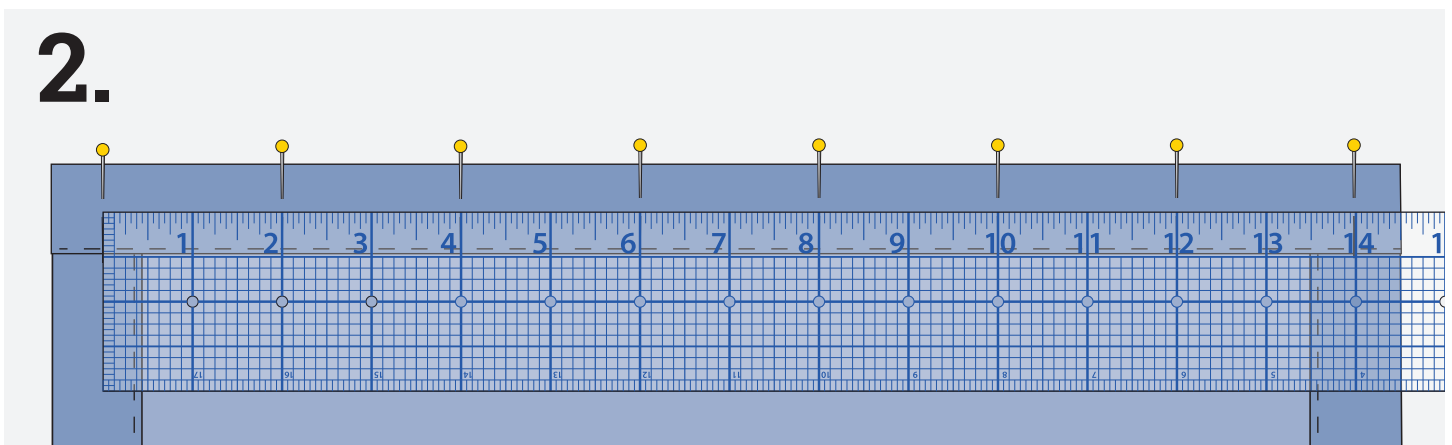
## How to Measure for Grommet and Eyelet Placement:

1. Start by marking the end grommet positions only. This varies by grommet size. For 3/8" grommets, the end grommets should be 3/8" – 1/2" from each end. See the TIP below.



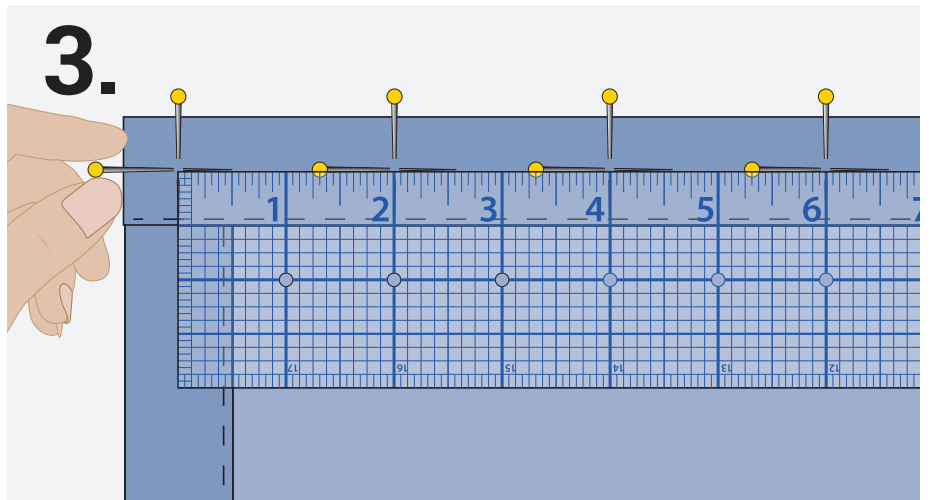
**TIP:** The distance to the edge of the fabric at each end will vary depending on the size of the grommet. For a pleasing balance, plan for the distance at each end to be the size of the grommet opening, give or take 1/8".

2. Here comes the math! To figure the distance between grommets, start with the quantity you plan to use. Subtract 1 from this number. Divide the distance between end pins by the resulting number. This is the distance between grommets. Easy! For example, for 6 grommets, divide the distance by 5. Place a straight pin at each measured distance.

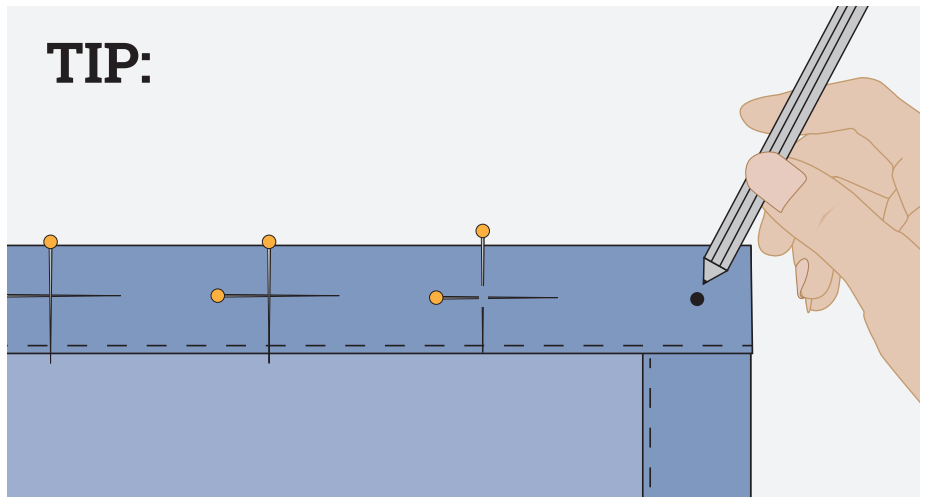


## How to Measure for Grommet and Eyelet Placement:

3. Place another pin half way in from the edge of the hem. Grommets will be placed, centered at each crossed pin intersection.



**TIP:** For a more foolproof marking system, place a pencil mark at the center of each pin crossing.



4. Follow the instructions for the grommet or eyelet of your choice to apply and complete your project.

