

# Ultegra 10-Speed Clips

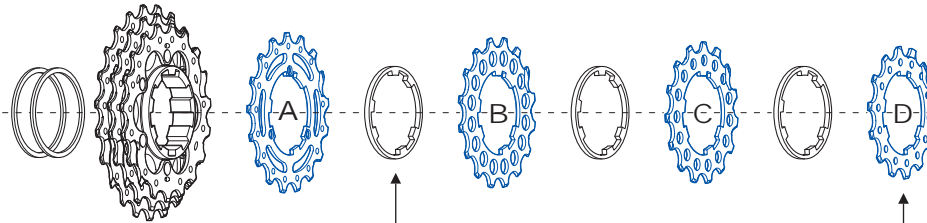
American Classic Clips - for Shimano Ultegra 10-speed cassettes only



Clips for 11T top cog

1<sup>st</sup>

Install the American Classic spacer, the Shimano spacer, and the first 7 cogs. These are the pinned cogs and the thinner cogs with only six splines. See below.

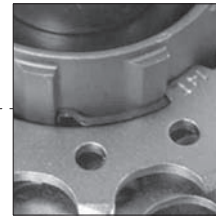


Splines in the spacers must align with splines in the cogs.

Cogs A, B, C, D, are thin and only have six splines. The clips protect your aluminum cassette body from these cogs.

2<sup>nd</sup>

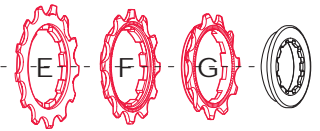
Install clips. Use picture as guide.



Clips are installed correctly if all three clips are flush with the top of cog D.

3<sup>rd</sup>

Install remaining 3 cogs. Thicker cogs with all nine splines.



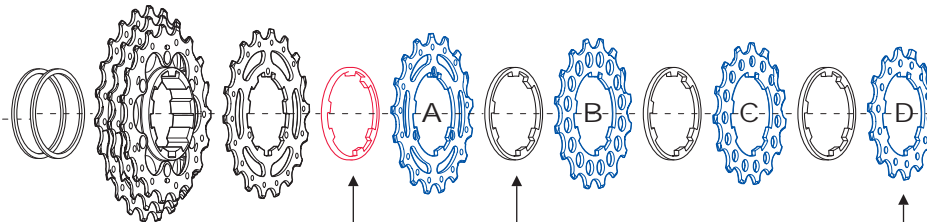
Cogs E, F, G, are thicker and have all nine splines.



Clips for 12T top cog

1<sup>st</sup>

Install the American Classic spacer, the Shimano spacer, and the first 8 cogs. These are the pinned cogs and the thinner cogs with only six splines. See below.



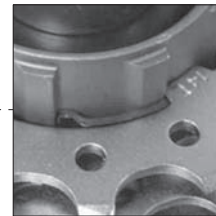
Splines in this spacer must **NOT** align with splines in the cogs.

Splines in the spacers must align with splines in the cogs.

Cogs A, B, C, D, are thin and only have six splines. The clips protect your aluminum cassette body from these cogs.

2<sup>nd</sup>

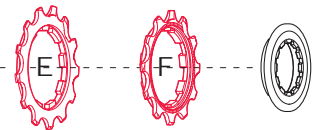
Install clips. Use picture as guide.



Clips are installed correctly if all three clips are flush with the top of cog D.

3<sup>rd</sup>

Install remaining 2 cogs. Thicker cogs with all nine splines.



Cogs E, F, are thicker and have all nine splines.

All repairs should be performed by a Professional Bicycle Mechanic.