

Smart Power Strip

Quick User Guide

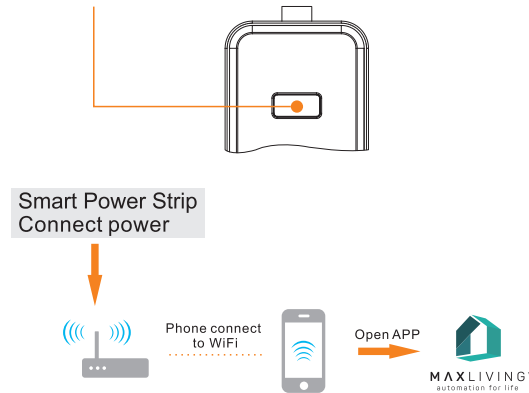
1. Install APP



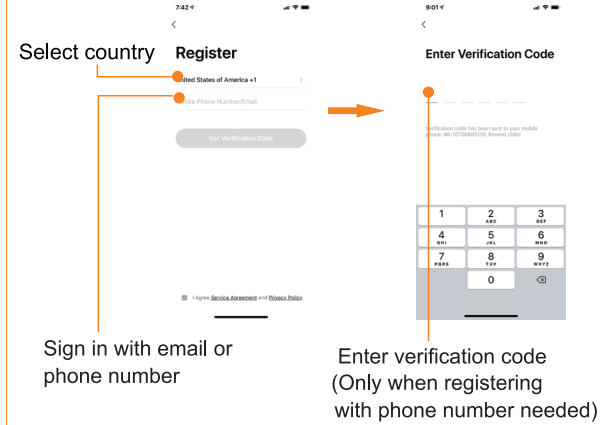
Scan QR code (compatible with Android & iOS system), or search "Smart Life" in APP Store or Google Play

2. Usage scenarios

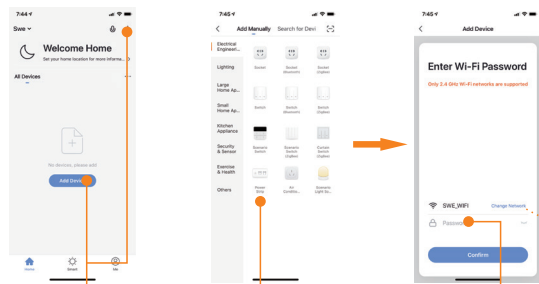
Power switch Long press to Recovery Factory setting | Wi-Fi indicator Configuration mode indicator flash 5-6times/second



3. Register APP

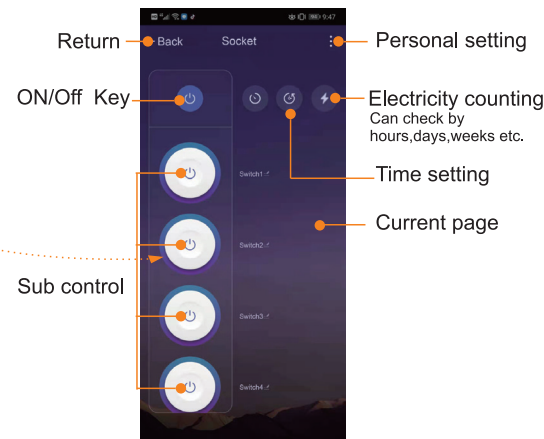


4. Configure



Add new devices | Click "Power Strip" enter operation interface | Input WiFi passport Click "Next"

5. Experience



6. Parameters

Product: 13A Smart Power Strip
 Model: ML-BS-11
 Rated Voltage: 250V~
 Rated Current: 13A
 AC Frequency: 50/60Hz
 Max. Power: Up to 3250W
 Wireless Type: 2.4GHz
 System Support: iOS/Android

ON/Off Button
 Press Long Time,Restore to Factory Settings

