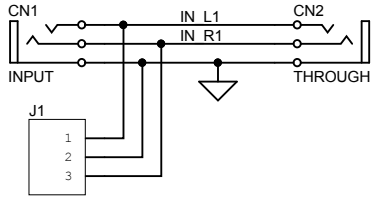
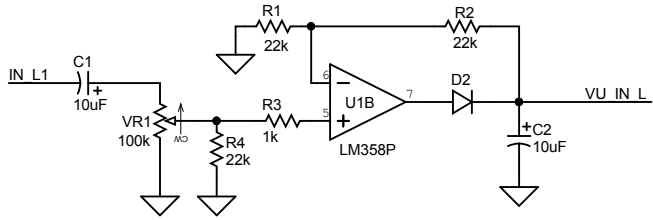


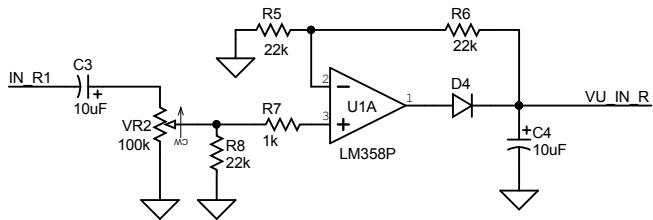
### Audio Input



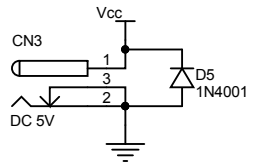
### Level Adjust



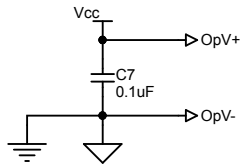
### Half-wave Rectifier



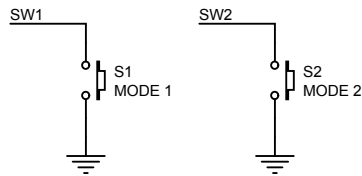
### Power In



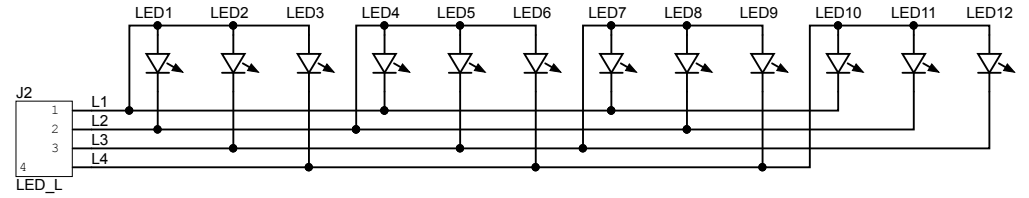
### Op-Amp Power Supply



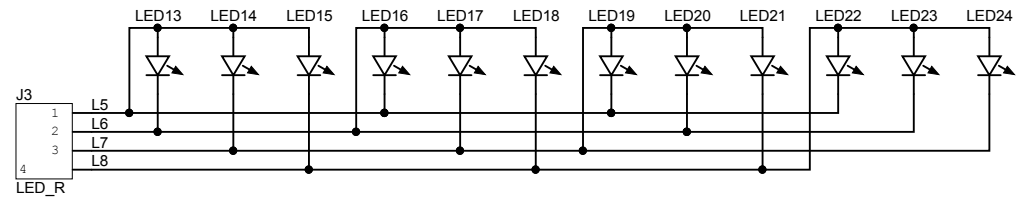
### Mode Buttons



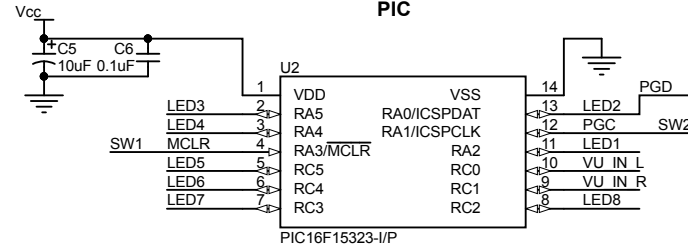
### Volume Level Indicator L



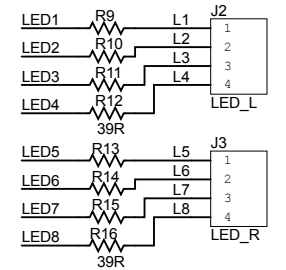
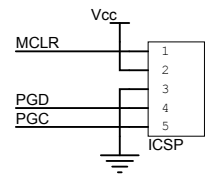
### Volume Level Indicator R



### PIC



### Programming Header



Notes: Through-hole version of rev 1C circuit.

Title		Stereo VU Meter		TheLEDart.com	
Size	Number	Revision		1CTH	
Letter					
Date:	1/3/2024	Sheet 1 of 1			
File:	\\.\Stereo_VU_meter-rev1CTH.SchDoc	Drawn By:		Akimitsu Sadoi	