



# FJD G31

3D EXCAVATOR GUIDANCE SYSTEM



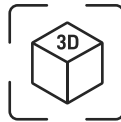


# HIGHER CONSTRUCTION EFFICIENCY WITH REDUCED COST

The GNSS and RTK-based grade control system features a 3D reference model, updates cut & fill workload, and displays excavator and bucket position in real time, so operators of all skill levels can deliver 3cm accuracy with ease.



Accuracy  
±3cm



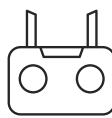
3D Visual  
Guidance



Tilt Bucket  
Support



Online Support  
& OTA

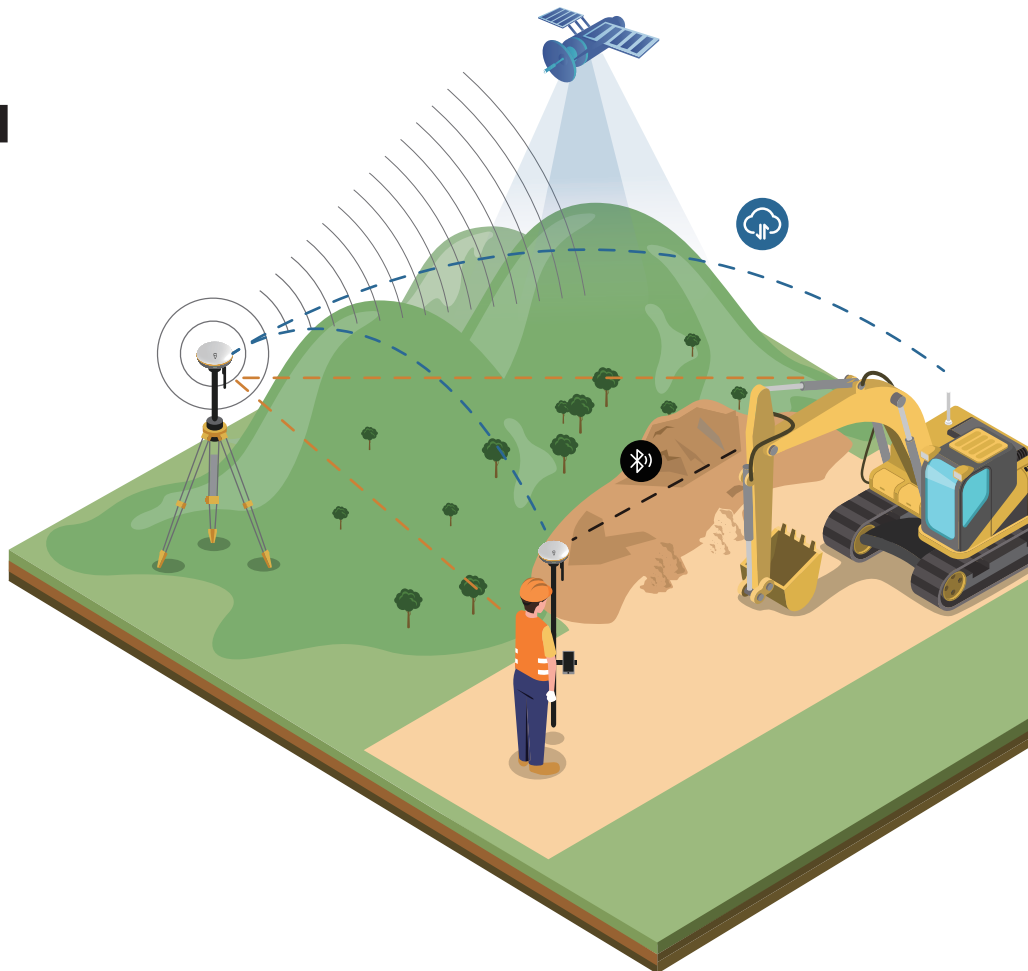


Remote Control  
/ Auto Mode



Network  
Transmission

## DIGITAL CONSTRUCTION SOLUTION



## 3CM ACCURACY

The sensor module ensures high precision and reliability. GNSS antennas with ultra-strong and stable signal make 3cm accuracy possible.



## SITE DESIGN

With design drawings, you can set datum points on the spot. With the built-in transection templates, 3D visual files could be synthesized for a smooth start.



## 3D VISUAL GUIDANCE

The 10.1" touch screen displays a 3D reference model in synchronization with your excavator — you know the real-time position of the machine & its bucket without the help of surveyors. Plus, you can figure out how many more hours to go with updates on cut & fill volume.



## KEY BENEFITS

**45%**



Fuel Consumption

**150%**



Proportion of Measuring  
Point Accuracy Within 3cm

**35%**



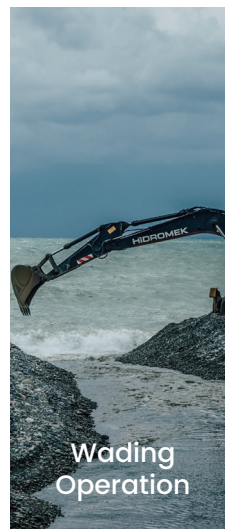
Labour Hours



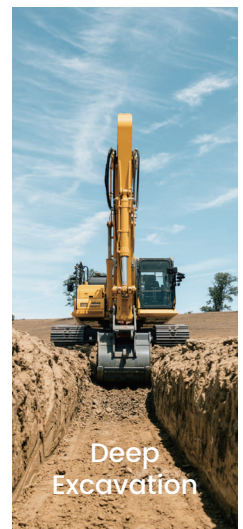
Slope  
Cutting



Land  
Leveling



Wading  
Operation



Deep  
Excavation

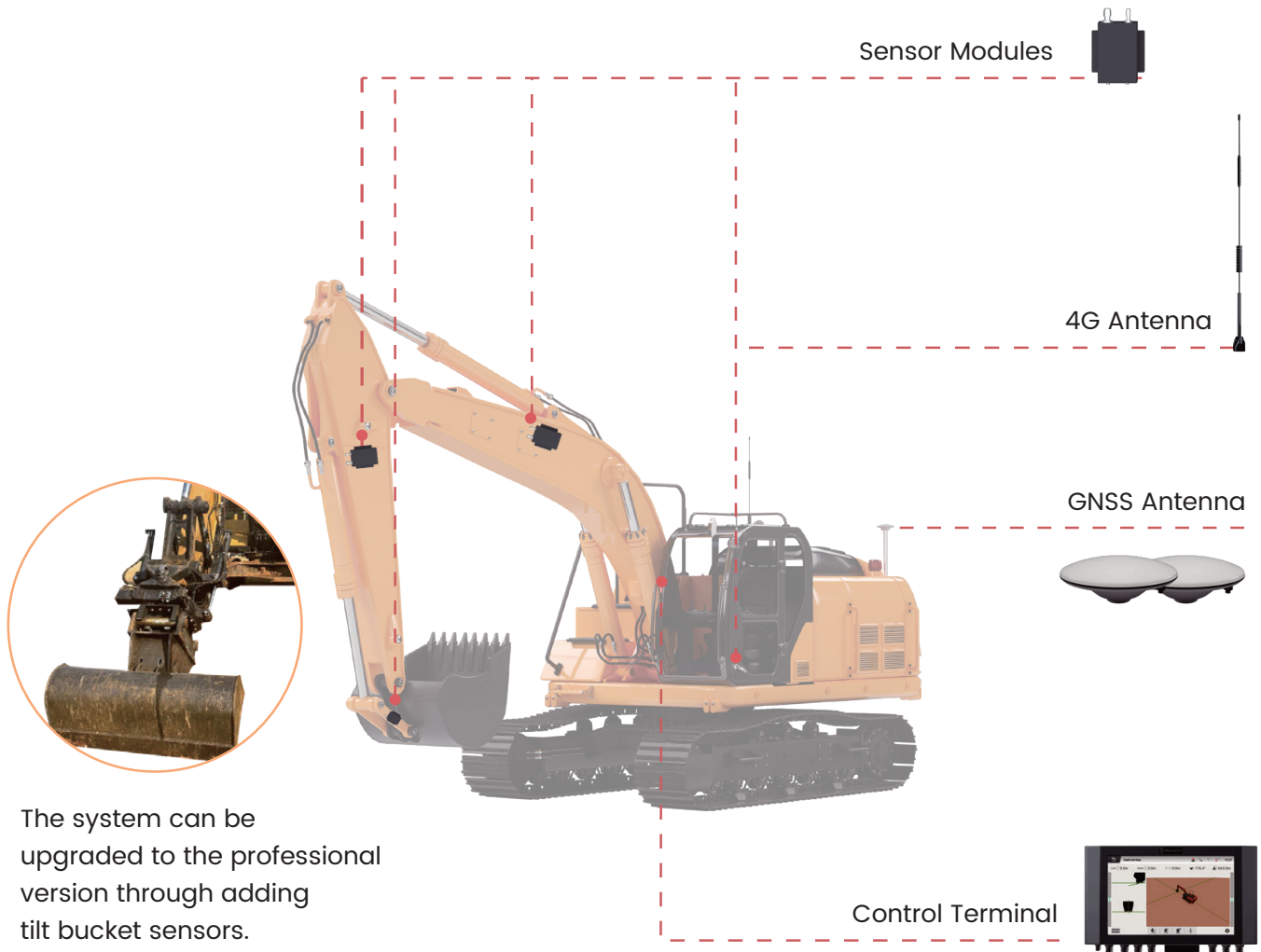
# QUICK SPECS

Accuracy	±3.0 cm
Positioning Satellite	Beidou / GLONASS / GALILEO / GPS

## Control Terminal

Signals	Radio / 4G
Screen	10.1" LED Touchscreen
Size	300 x 190 x 43 mm

## STANDARD VERSION



The system can be upgraded to the professional version through adding tilt bucket sensors.

### GlobalPos Pty Ltd

Email: [sales@globalpos.com.au](mailto:sales@globalpos.com.au)

Phone: 1800 636 627

Victoria

13/8 Enterprise Drive, Rowville, Vic, 3178

New South Wales

32A Bracken Close Cameron Park, NSW

2285

Western Australia

84 Sussex Street, Maylands,

WA 6051 Queensland

15 Latrobe Avenue, Helensvale,

QLD, 4212

