

RC500

SUNSTREAM

BOAT LIFT REMOTE CONTROL INSTRUCTION MANUAL

OPERATION USING TRANSMITTER (FOB)

Enroll Fob to Receiver

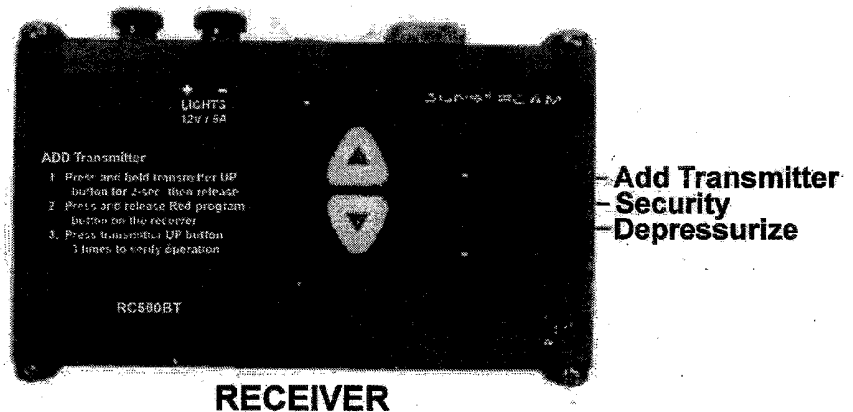
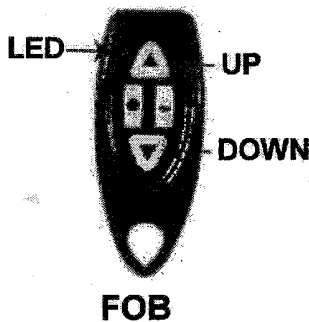
1. On KEY FOB: Press and hold UP and DOWN buttons for 3 seconds
**Deletes any previous enrollment in Fob*
**Wait 5 seconds before proceeding*
2. On KEY FOB: Press UP button
**Puts Fob into Find Bluetooth mode*
3. On RECEIVER: Press RED Program button to Add Transmitter
**Puts Receiver into Find Bluetooth mode*
**Lights will flash to confirm enrollment*
**If Fob does not enroll, repeat entire procedure*

Unenroll Fob from Receiver

- On KEY FOB: Press and hold UP and DOWN buttons for 3 seconds
**Fob LED will fast flash for 2 seconds, then begin flashing slowly. Fob will be unpaired.*

Clear Receiver of all paired Fobs

- On RECEIVER: Press RED Program button and hold for 20 seconds
**After 20 seconds, "Add Transmitter" will flash twice to indicate all Fobs are deleted from memory*



TRANSMITTER (FOB) OPERATION WITH RECEIVER (BOAT LIFT)

Fob

Lights ON

Lights OFF

UP Boat Lift

Lights OFF

DOWN Boat Lift

Lights turn ON with press of Lights ON button
Lights turn OFF with press of Lights OFF button or automatically after being ON for 5-minutes

RC500

BOAT LIFT REMOTE CONTROL INSTRUCTION MANUAL

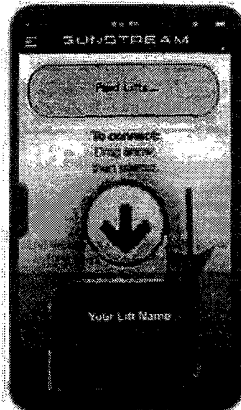
SUNSTREAM

OPERATION USING PHONE APP

Download app from the Sunstream Apple or Android store and Open the app

Pairing Your Lift

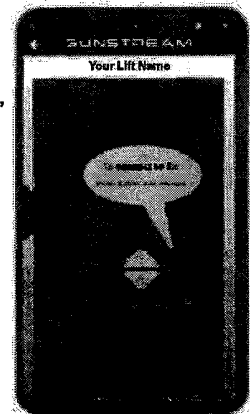
1. Bar at top of screen is Yellow then turns Gray when all lifts in the area have been located.
2. Scroll across bottom of screen and find your lift (on first use the lift will show a factory name).
3. Drag arrow down on top of tab with your lift name and release.
4. Connecting to app screen is displayed.



Find Lift Screen

Connecting Your Lift

1. Follow instructions on Connecting screen.
2. After lift is connected to app, the Fob screen is displayed.



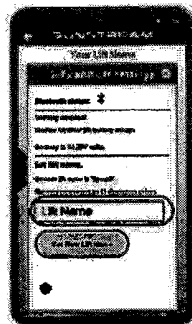
Connecting Screen

Renaming Your Lift

1. Tap Info icon on Fob screen and Info screen is displayed
2. Tap "Lift Name" box, type in a new name and tap the "Set New Lift" tab



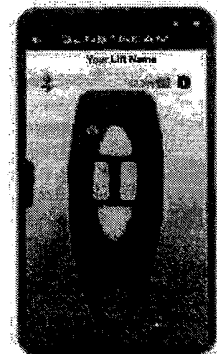
Fob Screen



- * Bluetooth icon circled in Blue is Gray when not connected and Blue when connected
- * Info icon is circled in Red

Operating Your Lift

Navigate to Fob screen and tap buttons to move lift up and down and to turn on lights.



Fob Screen

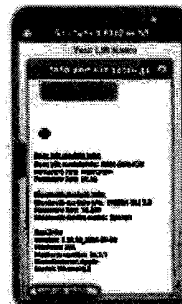
App Settings Menu Info Screen

Grab tab on left side of any screen and swipe to right to access App Settings Menu



For Service (Send Email with Lift Details)

1. Navigate to Info screen and scroll down to bottom of screen.
2. Click on "Email info results"
3. Type in email address for Sunstream and tap Send icon



Info Screen



Email Screen

RC500**BOAT LIFT REMOTE CONTROL INSTRUCTION MANUAL****SECURITY MODE**

The keypad can be locked to prevent tampering with the lift. The transmitter and phone app still function in Security Mode. The factory setting of the security code is 1223, but this may be changed.

The keypad has only numbers 1, 2 and 3 which are selected by pressing 'Power', 'Up' or 'Down' respectively.

To Enable Security Mode:

- Press the 'Program' button twice (to 'Security'). Enter security code (factory setting 1223 or your custom code) and press 'Program'.
- Turn Security Mode 'Off' by entering the security code and pressing the 'Program' button.

To Customize your Security Code:

- Press 'Program' twice (to 'Security'), then press and hold 'Program' for about five (5) seconds until the Program light flashes in a 2-flash pattern.
- Enter the old security code and press 'Program'. Light will flash in a 3-flash pattern.
- Enter the new security code and press 'Program'. Light will flash in a 4-flash pattern.
- Enter the new security code again and press 'Program'. New code is programmed. Record your new security code in a secure place. Your dealer can reset your code back to factory settings if needed.

DEPRESSURIZE

The Depressurize feature will depressurize the hydraulic lines (for all SunLift™/FloatLift™ models except FL6, FL10 and FL13 FloatLifts™). With no pressure in the lines, the quick disconnect can often be unscrewed by hand (after breaking free with wrench).

To Depressurize: Press the 'Program' button three (3) times to light up the 'Depressurize' LED, then press 'Up' to depressurize one side, and 'Dn' to depressurize the other.

- The 'Up' button activates the up valve and depressurizes the cylinder extend (in SunLifts™). The 'Down' button activates the down valve and depressurizes the cylinder retract (in SunLifts™).
- In FL6, FL10 and FL13 FloatLifts™, pressure is maintained by the pilot-operated check valves and cannot be depressurized by this feature. Depressurize these systems by briefly running the lift in the opposite direction than was pressurized.

BATTERY MONITORING

- The 'Battery Fault' indicator lights when the battery voltage is low. Charge the battery with an AC charger if the 'Battery Fault' light is on. Solar panels will not charge a dead battery.
- Check Battery voltage on app. If a battery warning is displayed, then check the battery voltage and charge as needed.

LIGHTS PLUG

Optional underwater or Dock LED lights are available for SunLifts™ and FloatLifts™(LA-LP1), and are connected directly to the 'LIGHTS' connections on the side of the RC500. The lights are controlled with the 'circle' button on the transmitter and are latched on for 5 minutes or may be toggled 'Off' by pressing the 'half-circle' button. Do not exceed 5A (protected by the auto-resetting circuit). Some models will have a fuse.

INSTALLATION INSTRUCTIONS (if not installed by factory)

The RC500 is compatible for lifts that use the previous RC306, RC308 and RC401. **The transmitters in the RC500 are not compatible with any of the previous receivers (different technology).**

1. Connect the RC500 to the 6-pin connector of the hydraulic pump wire harness. LA-RCX12 wire extension is available.*
2. Attach the RC500 to the reservoir of the hydraulic pump with the included Velcro strips.
3. The antenna is inside the receiver box and is not accessible.

* A 12 inch 6-pin extension wire harness is available (LA-RCX12) if existing pump wire harness is too short (for example: Dual Mini). If a small amount of extension is needed, the existing wire harness can be adjusted by rerouting the wires and trimming the existing wire shrink wrap.

RC500

SUNSTREAM

BOAT LIFT REMOTE CONTROL INSTRUCTION MANUAL

SPECIFICATIONS

Lights	12 Volts, 5 Amps Output
Transmitter (Fob)	Sealed
Transmitter (Fob) Battery	CR2032 (3 Volts)
Receiver Dimensions	6.3" x 4.0" x 2.5"
Receiver Enclosure	Sealed
Receiver Max Amps	12 Amps
RF Frequency	2.4 GHz

ACCESSORIES

	Smart Phone Compatibility	Apple iPhone 6 & newer Android Marshmallow 7 newer
LA-LP1	Light Package	LED ring for underwater or dock. Activated with transmitter.
LA-RCX12	12 inch 6-pin extension wire harness	Extension wire harness to relocate RC (if needed)

TROUBLESHOOTING

Issue:	Solution:
No 'Power' light and lift does not operate with keypad, transmitter (fob) or app	<ul style="list-style-type: none">- Check battery connection- Press Power Button on control box- Check fuse in hydraulic pump wire harness- Check Battery Voltage (Voltage should be 12VDC or higher)
No lift operation with transmitter (fob), but works with keypad on control box or app	<ul style="list-style-type: none">- If 'Battery Fault' on controller, charge battery- Enroll transmitter (fob) using 'Add Transmitter' instructions- Verify Power light is ON (see 'No Power' light solutions above)- Replace battery in transmitter (fob)
Lift operation stops after a few seconds when using fob or app	<ul style="list-style-type: none">- Confirm lift operates normally with keypad- Fob and app control cuts out when battery is low, leaving approximately 1 cycle of battery power remaining. Use keypad to lift boat. Change battery.
Lift does not operate with keypad but does with transmitter (fob) or app	<ul style="list-style-type: none">- If 'Security' light is ON, keypad is locked with Security Mode. See Security Mode instructions.
Battery drains in Solar mode	<ul style="list-style-type: none">- Verify lift is not being overused for the number of solar panels connected- Verify sun has direct contact with solar panels for maximum number of hours- Clean solar panels
Transmitter (fob) has limited range	<ul style="list-style-type: none">- Replace battery in transmitter (fob)- Call factory

For all other issues call the factory or dealer.



WARNING: Only operate the boat lift when in clear sight of moving parts. Keep people away from moving parts.



CAUTION: Always leave your lift in the fully up and over-center position. For additional safety, secure your boat with dock line.

NOTICE: RC500 is only to be used on Sunstream SunLift™ and FloatLift™ models and is not to be used for other purposes. Opening enclosure voids warranty.

Document: 661078 Rev C COPYRIGHT 2022 SUNSTREAM CORPORATION - ALL RIGHTS RESERVED