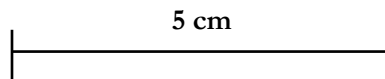


## How to measure your ring size

### *Step 1*

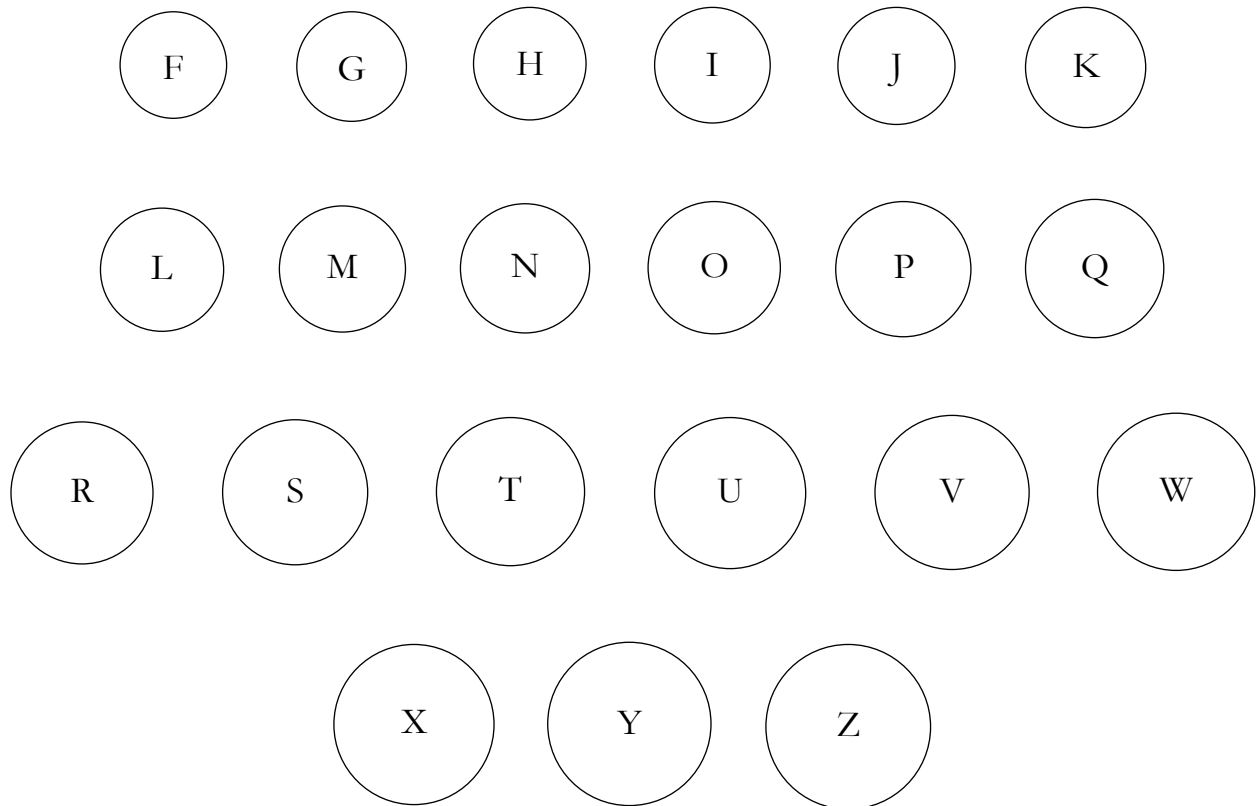
Print this document on A4 paper and measure the line below to ensure it measures 5cm.



### *Step 2*

Measure an existing ring

Select a ring that fits the finger you want to be sized and place it over the circles below. Place your ring over each circle until the inside circumference of the ring lines up perfectly.



Please note: This chart is to be used as a guide only. Ring sizes can differ based on ring band width, shape of fingers, or even the time of year as our fingers tend to swell more in the summertime.

Still unsure? Contact [info@asimistudio.com](mailto:info@asimistudio.com)