



ATLANTIC  
PUMPS

# KEEPING ABRASIVE FLUIDS MOVING

An Introduction to Atlantic Pumps





**Control, treatment  
and movement of  
clean and dirty water  
right through the  
process - from  
dewatering to discharge  
- in quarries, heavy  
industry, recycling  
and energy plants.**

**Our passion is  
to supply pumping  
solutions in the fastest  
and simplest manner  
so our customers are  
never left high and dry.**





From initial dewatering or feedstock, every step of aggregate and waste processing, and right through to discharge, we know that the movement of abrasive fluids is critical to site performance.

End-to-end management of quarry water and abrasive fluids within industrial processes is our constant focus. We are the only UK pump manufacturer dedicated to these industries. Right from when it's 20-30% solids through to discharge as good, clean water to achieve compliance, movement of fluids requires tailored and effective pumping.

Our experienced, knowledgeable and friendly team provides honest advice and delivers sound, sensible solutions to your pumping needs that keep downtime to a minimum and save you money.

We understand that your site or plant requires the fastest possible response and the delivery of practical solutions that work.

## There are three main areas to the support that we provide

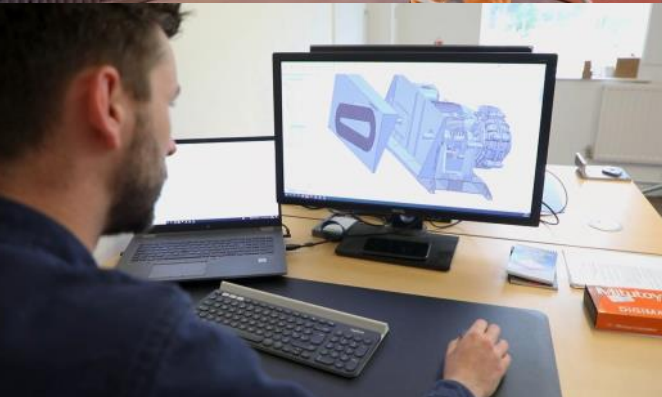
- Standalone consultancy, providing assessment and guidance on the management of abrasive fluids within your processes.
- Supply, installation and servicing of pumps, pump parts and related equipment to keep your abrasive fluids moving, backed up by a rapid breakdown service.
- Monitoring, treating and reporting on water quality to ensure compliance.



**“If you’re looking for rapid solutions to your pumping issues, Atlantic Pumps are the people to turn to. You’ll get sound, good quality, trustworthy advice and you’ll get it quickly.”**







# Boosting quarries, plants and recycling facilities globally, every day

Our Operations facility is sited in Chesterfield, UK with the 1.25-acre, multi-building site home to:

- Research and Development
- Pump and product builds
- Our stockholding
- Product testing
- Refurbishments
- Spray booth
- Six cranes, with lifting capability ranging from 500kgs to 5000kgs

We continually invest in our facilities, equipment, materials, stock, staff and training. This allows us to provide rapid support for our customers and is vital for maintaining the high service levels which have driven our growth.





# Site maintenance and pump refurbishment

At Atlantic we recognise just how important aftersales service and maintenance is.

Our service team are always on hand to assist and complete both in-house and on-site repairs and maintenance as well as full refurbishment packages.

Our fully trained fitters can attend your site in vans stocked with all the relevant tools and pump parts.

They are backed up by our workshop which has the ability to completely refurbish the largest pumps found on quarries, plants and recycling facilities.



## Our values

### Genuine care

We want people to feel like it was our privilege to interact with them.

### Speed and simplicity

Always looking for ways to speed up processes and make life simple.



### Commitment to excellence

In the day to day of our customer relationships.

### Do what we say we are going to do

We want the best for all our stakeholders and believe this takes Courageous Conversations and Accountability.

### Humble and hungry

Respect customers, colleagues and suppliers and make decisions sensitive to this, being prepared to work with people who don't always align with us.

# Industries and applications

- Aggregates
- Anaerobic digestion
- Bioenergy
- Breeze block manufacturing
- Coal washing
- Dewatering
- Dredging
- Dust suppression
- Energy
- Food manufacturing
- Large scale manufacturing
- Lime slurry
- Mine effluents
- Mining
- Paper manufacturing
- Quarrying
- Ready-mix concrete
- Recycling
- Sand processing
- Silt pumping
- Sump pumps
- Thickener underflow
- Wash plant feeds
- Water treatment

## Clients include:







# Working towards a better future

Sustainability is a key part of our commitment to our core markets of mining, quarrying and recycling. These industries provide the foundations of much of our modern world and as a key partner we've recognised that we can bring disproportionate sustainability benefits.

Of course, we can make commitments within our own company but, by being outward looking and ambitious for our clients, we can massively increase our contribution.

We split our Sustainability programme into four pillars, influenced heavily by our company culture and foundation.

## Energy

After years of studying energy efficiency at site level, particularly in the field of abrasive fluid management, we help sites new and established reduce their pump system energy costs and carbon footprint.

## Innovation

We believe smart data reporting and analysis is the largest contributor to being able to drive improvements in sustainability. It's been proven to radically reduce costs, improve maintenance planning, save time and transform energy usage.

Following the introduction of EnviroHub in 2020, our commitment is to introduce a remote monitoring device on all our pumps and offer all clients the ability to use the information to improve their pump efficiencies.

## People

Here at Atlantic, our staff are always training in new skills, striving to be the very best they can be. And the effect? They spread this around them, improving customers' skills and hence improving lives.

We are committed to putting all staff through a development and improvement programme each year.

## Recycling

Companies are being more and more innovative when it comes to recycling, finding new and sustainable ways to recover materials. We are working on this within our own processes but perhaps our greatest contribution is to helping other companies working on these processes.

If recycling processes can be made more cost effective, the recycling rate will increase and we'll create a more sustainable world.

Our commitment is to help our customers to recycle twice as much by 2025 than they did in 2015.



# Designed with your industry in mind



Audex is a respected manufacturer of industrial submersible and vac-prime self-priming dewatering pumps.

Audex pumps have been specifically developed for use in the toughest and most abrasive of applications and environments. Trusted by operators of quarries, mines and recycling facilities, Audex represents quality and reliability giving you superior performance and reduced downtime. Pumps that suit your application better because they have been designed with your industry in mind.

## AW & AW Pro Pumps

Available in a range of sizes from 2" to 8" discharge, Audex AW and AW Pro are wear-resistant submersible pumps with agitators that are ideal for handling dirty water and settling slurries. Reliable and industry-proven, AW pumps offer exceptional service life with minimal running costs and repairs. Audex AW Pro pumps also include an intelligent control system (ICS), giving your pump complete protection from seal leakage or wiring issues.

## AS Pumps

Available in a range of sizes from 3" to 8" discharge, they are suitable for mine and quarry dewatering and wash plant feed. This durable range of pumps have cast-iron bodies and motors, while their mechanical seals are resistant to high pressures, allowing the pumps to be deeply submerged. A semi-open impeller made from high chrome and ductile-iron wear plate improve durability. The pump motors are hermetically sealed.

## Pontoons

Made to order to suit the customers exact requirements and specification, Audex Pontoons consist of a heavy-duty mild steel structure which are supported by patented blow molded plastic buoyancy sections.

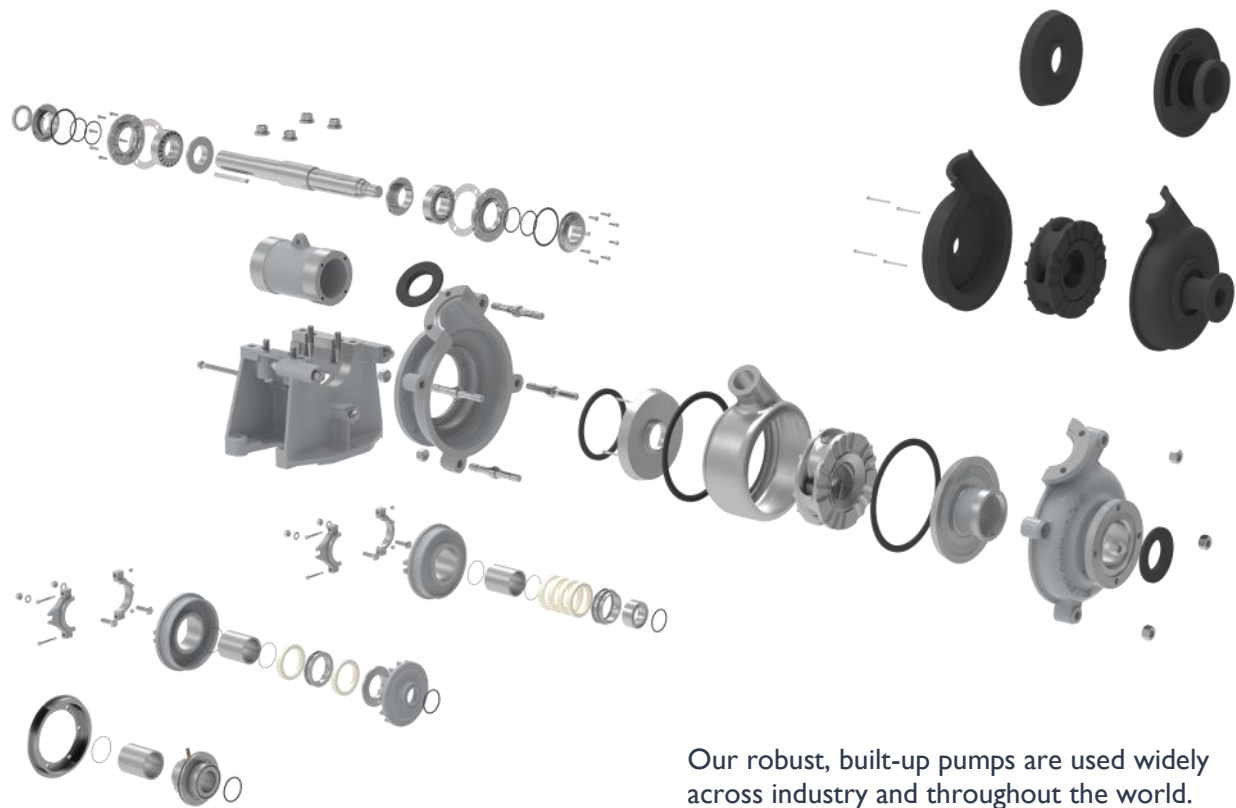
The buoyancy sections offer impressive payloads and are extremely hard wearing and robust, while the flexible design allows the option of mounting pumps in various ways to suit all pumping applications.







# A better slurry pump experience



SlurryPro pumps are used extensively in quarries and mines globally and are proven to give you a better slurry pump experience. We've optimised the design of the base for safety and ease of use and have also worked closely with seal manufacturers to achieve much longer wear life.

SlurryPro is all about heavy duty, giving you maximum wear life when processing and pumping really abrasive fluids.

- Superior wear life and reduced lifetime costs
- Designed for the heaviest duty applications
- Backed by Atlantic Pumps' servicing division

## Horizontal & built-up pumps

A heavy-duty range of slurry pumps available in a wide range of sizes, with both high chrome and different grades of rubber wearing parts. Spare parts are dimensionally interchangeable and proven with a wide range of other makes of slurry pump.

Our robust, built-up pumps are used widely across industry and throughout the world. A static base features as standard with the option to upgrade to a sliding base. The pumps also feature a universal motor mount to accommodate different motor sizes, a perforated belt guard that is fully compliant with guarding regulations and the option for an automatic greasing system.

## Vertical pumps

This heavy-duty range features a cantilever shaft design that eliminates any bearings or seals in the fluid end.

An ideal pump for heavy slurry wash down and spill duties, it has a full range of material options including complete elastomer lined pumps and hard metal options for corrosive and abrasive media duties.

Pumps in all sizes can be configured with a range of column lengths and impeller designs. SlurryPro vertical pumps are ideal for coarse particles and high concentrations of slag pulp and are widely used in the quarrying, mining and recycling industries.







## Containing your abrasive fluids. Easy.



Gromatex products are designed and manufactured to provide a long lasting but simple solution to containing and transporting abrasive fluids.

A focus on heavy duty, abrasion resistant rubber and elastomer materials for pipework, coupled with a unique modular concept, the Gromatex range brings a whole new experience to the market.

Tried and tested in the harshest applications across the quarrying and mining industries internationally, Gromatex products have a reputation for being a cost-effective solution to the challenge of moving abrasive fluids.

### Cyclones

Among the heavy-duty rubber lined products included in this range are flexible hose, pipework (such as bends, tees and other similar parts) and hydrocyclones – all long lasting, simple products designed to contain abrasive fluids.

### Hopper

The hopper is a great example of Gromatex's bespoke, high-quality engineering capabilities.

The team work closely with clients to design, manufacture and rubber line products for mineral processing equipment that are long-lasting and resistant to abrasive fluids.

### Hosing

Available in any length and a variety of widths, Gromatex rubber lined hosing is manufactured in the UK to a high standard and is rigorously monitored during production to ensure consistent high quality.

It has a maximum working pressure of 10 bar which allows the hose to be used for many applications.

### Pipework

Gromatex rubber lined pipework features bends, reducers, tees, straights and hose tails and offers a combination of mechanical strength and abrasion resistance.

The development of a modular configuration gives you the ability to focus on areas of the highest wear and makes the replacement of wear parts much easier.











## Safe water with service



EnviroHub is a control system used by the quarrying and construction industries to monitor, treat and report on water quality onsite.

### Why you need EnviroHub

A site may accumulate water from the ground during excavations, use water in the production process or to wash down equipment after use. As a result, there can be contaminants in the water which can cause problems on site and be harmful to the environment.

With sites now required to provide proof of safe water disposal and water quality checks routinely being carried out by the Environment Agency, a robust monitoring system such as EnviroHub plays a vital role.

Disposing of water that contains pollutants can result in heavy fines and can damage a company's reputation. Furthermore, incorrect disposal of water has resulted in solids or concrete silt blocking drains, chemicals killing off local wildlife and trees and costly environmental clean-ups needing to be undertaken.

### What can EnviroHub do?

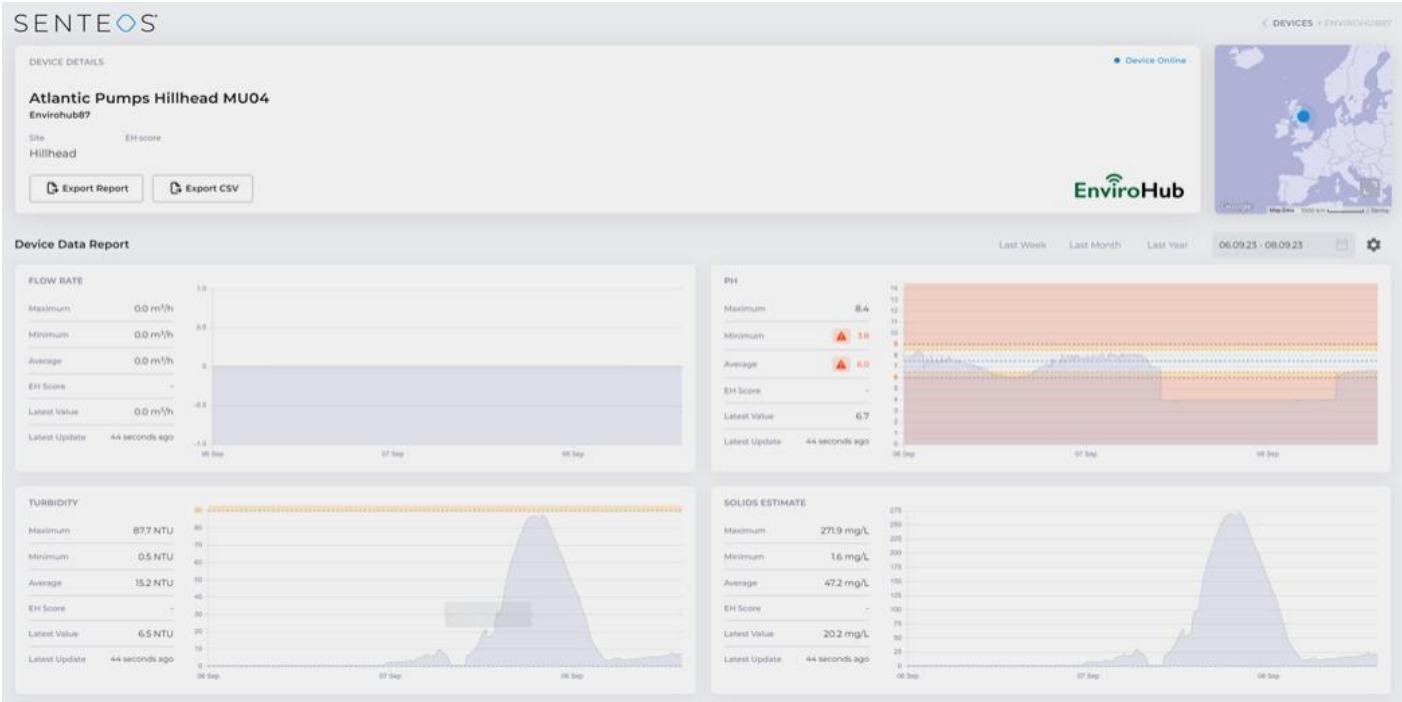
In addition to monitoring and reporting water quality onsite, EnviroHub can send you warnings when you are approaching the parameters set in abstraction or discharge permits and automatically intervene by controlling pumps and valves to stop water movements.

The system also ensures that any water that is to be disposed of is treated and is free from pollutants.

EnviroHub can be integrated with corrective measure equipment, such as pH correction, settlement tanks, flow regulation and temperature control. This is all remotely accessible for review from anywhere and at any time via the online portal Senteos (see opposite, bottom).

### Simple and stress-free solutions for environmental protection.







# The world's best hose pumps



LSM Pumps are a Danish based company and are one of the main players in the industrial peristaltic pumps market.

Their positive displacement pumps are used globally and are known for their low energy consumption, low and easy maintenance and their exceptional build quality. These self-priming, high-pressure pumps are able to run dry and have the ability to pass large objects.

LSM produce a range of different sizes of peristaltic pump ranging from common sizes such as the LSM-25 (1") up to the LSM-200 (8") model – recognised as the largest peristaltic pump in the world.



## Industries

LSM pumps are used in a wealth of heavy industries including:

- Food
- Mining
- Chemical
- Fishing
- Agriculture
- Biogas
- On and offshore
- Concrete production
- Paint manufacturing

They are an ideal fit-for-purpose pump in many applications that handle abrasive or aggressive fluids and slurries due to their simplicity and ease of maintenance.

## Advantages of LSM Pumps

- They are reversible
- They are self-priming
- Easy to service. The pumps do not need to be dismantled during hose changes.
- Can run dry
- Low energy consumption compared to other pumps.
- The pumps are sealed and protected against back flow, even when they are not in operation as the rollers always push the hose flat.
- Good hygiene. Only the hose is in contact with the fluid which is being pumped.
- Solid objects can to a certain extent pass through the hose.
- They are suitable for fluids with a high viscosity and a high dry matter content.
- The main components of an LSM hose pump are the pump casing, the hose and the rotor.







# Robust pumping power



**Toro pumps are designed to handle corrosive and abrasive chemicals and fluids with suspended particles.**

They are widely used in various industries, including:

- Mining
- Chemical processing
- Water treatment
- Food
- Beverage

Toro pumps offer durability, reliability and low maintenance, making them an excellent choice for a wide range of process applications.



## Toro ANSI

Toro ANSI centrifugal process pumps are characterised by three essential features: passage of large solids, extended service life and modular wet end and power frame interchangeability.

The Toro ANSI pump line has 44 models available with a wide range of hydraulic parameters. A robust design with wet end parts constructed from cast iron, stainless steel, Hastelloy or titanium, Toro pumps provide reliable operation even with fluid abrasion and crystallisation.

## Dimensionally interchangeable

Toro pump spares are dimensionally interchangeable with the following pump brands: Allweiler, Bellin, Borger, Bornemann, CSF, Kiber, Mono, Netzsch, Nova Rotors, PCM, Roto Pumps, Seepex, Vogelsang and Wangen.

Proven across a wide range of industries globally, Toro pump spares are available in the UK and Ireland through Atlantic Pumps.

Our large stock holding is backed by our rapid dispatch meaning you can avoid downtime and save money. Where possible, we even offer same day delivery.





# Providing pump solutions to industry, globally

## Atlantic Pumps are part of Intrax

Intrax is a global leader in specialist pumping equipment for difficult and challenging industrial applications.

We are known for excellence in bringing innovative and cost-saving ideas to customers as well as offering unrivalled levels of customer service and response times.

The groups' combined wealth of experience and technical know-how in highly sophisticated applications allows us to work closely with engineering teams on large-scale projects across the globe, firmly establishing Intrax as their trusted partner.

For further information, please visit our website: [intraxglobal.com](http://intraxglobal.com)

## Our brands

**AUDEX**

**GROMATEX**

**SLURRYPRO®**

**TECHNIFLO**

**TORO**  
robust pumping power



“

**We can always be assured that if we have any requirements, even if it is very urgent, we receive a prompt and excellent service. Nothing is a problem and there is always a solution.**

South West based engineering company



ATLANTIC  
PUMPS

Atlantic Pumps Registered Office  
Unit 21 Prospect House  
Colliery Close  
Staveley  
Derbyshire  
United Kingdom  
S43 3QE

Tel: +44 (0)800 118 2500  
WhatsApp (24/7): +44 (0)7537 149 180  
Email: [info@atlanticpumps.co.uk](mailto:info@atlanticpumps.co.uk)  
Website: [atlanticpumps.co.uk](http://atlanticpumps.co.uk)

Atlantic Pumps is part of Intrax.

Atlantic Pumps Ltd is a Limited Company registered  
in England number 09400148.

