

# DTF A4 Roll Feed Printer User Manual



Set up and  
printing



Pro RIP Software  
Introduction

# Content

**1. Machine Self-test**

**2. Film load**

**3. Software Setups**

**4. Ink Load**

**5.DTF Printing**

**6. Maintance Plan**

**7. Notice and Tips**

**8. Tech Support Contact Info**

**9. Warranty Policy**

## 1. Machine Self-test



Test the printer self-test process

Step 1. After unpacking the machine, first please take a careful look at the outer appearance to ensure there's no damage caused by the long-distance transportation.



Check if the printer's performance is normal

Step 2. For every printer, we've attached the printer testing page performed by factory for your information. Procolored strictly regulates the quality of every finished product.



Take out the factory test page report of the machine

Step 3. Now we lift up the front cover.



Check if there is any transportation damage inside the machine

Step 4. Please carefully check if there's any malposition or distortion of the inner components. If yes, do contact us immediately.

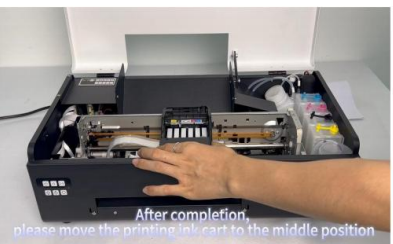


Step 5. Here we've set a cable tie to fasten the printhead assembly.



Remove the fixing strap of the printing ink truck

Step 6. Please use a scissors to untie it.



After completion, please move the printing ink cart to the middle position

Step 7. Then move the printhead assembly to the middle.



Perform printer startup steps Start the printer's main power supply

Step 8. Now turn on the printer, as the picture shows.



Step 9. Press the first button to start the machine.



Please wait for the printer to complete its self-test

Step 10. The machine will automatically start a self-test during which the printhead assembly moves forward and backward.

## 1. Machine Self-test



Step 11. When the self-test finishes, the first button will no longer flashes.



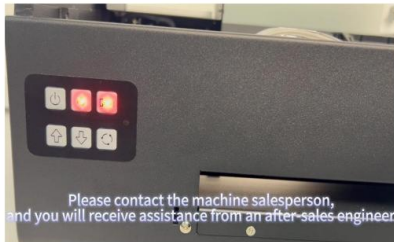
Step 12. Now we press the top third button to initiate a performance test.



Step 13. This test might take a little longer time and it will finish when the first button stops flashing,



Step 14. And now we've finished the entire machine self-test process. Please put the front cover back to the place.



\*ATTENTION\* During the entire process, if these two buttons turn red as the picture shows, please contact our customer services immediately.

## 2. Film Load



Step 1. Fasten the side screws of the film exit plate.



Step 2. Install the cutter.



Step 3. Fasten the screws of the other side.



Step 4. Install the cutter and film exit plate to the printer.



Install the film roll brackets.

Step 5. Now we install the two brackets at the rear. Load the brackets and fasten the screws at both sides.



Step 6. Insert the roller bar into the plastic holder.



Step 7. Insert the film roll into the roller bar, remember to push the film to the left end.



Step 8. Insert the other plastic holder in, also, push it to the end.

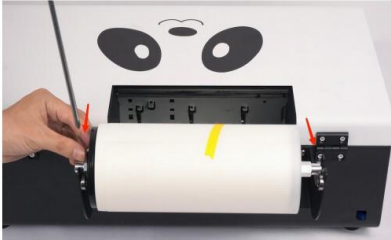


Step 9. Before loading the film on the printer, do pay attention to the correct side of the film - film without coating [the inner side] is not for printing.



Step 10. Load the film onto the printer, place the film roll to the farthest left [the left when we're facing the rear of the printer].

## 2. Film Load



Step 11. Fasten the screws on the plastic holders at both sides.



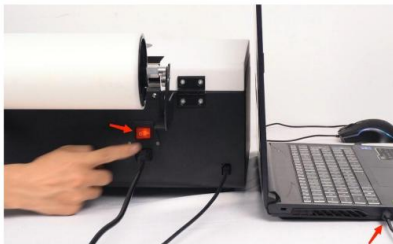
Step 12. Load the film into the printer (the side with coating facing up).



Step 13. Plug in the cable.



Step 14. Plug in the cable.



Step 15. Connect the printer to your computer and power it on.  
[only support computer with Windows system]



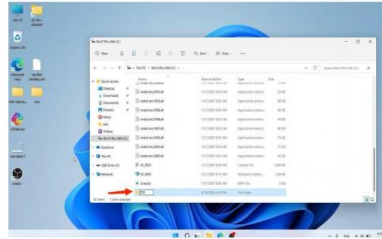
Step 16. Press the bottom middle button, to test if the film can be loaded smoothly.

### 3. Software Setups

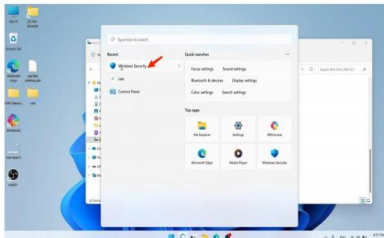


Step 1. Insert the blue dongle and USB drive (we highly recommend to use a USB splitter to perform simultaneous operations more conveniently).

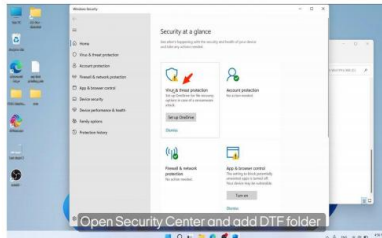
① Blue dongle: it'll be needed every time you open RIP software on your computer. ② White USB drive: we've stored some tutorial videos and software drivers in it.



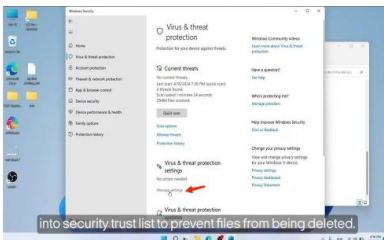
Step 2. Create a new folder in the C drive and name it as "DTF".



Step 3. Enter Windows Security .

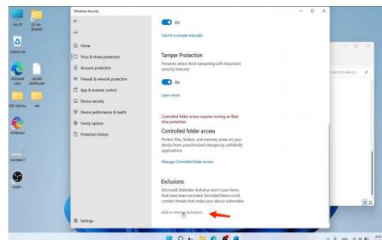


Step 4. Go into Virus & threat protection.

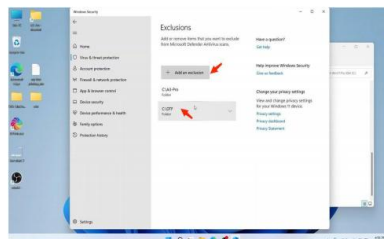


into security trust list to prevent files from being deleted.

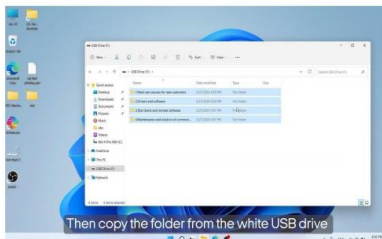
Step 5. Enter Manage settings.



Step 6. Roll down and click Add or remove exclusions.

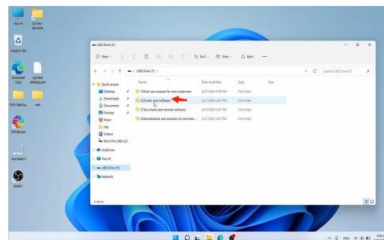


Step 7. Add an exclusion and make sure the folder DTF is included in the trusted list.

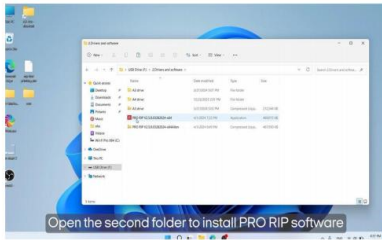


Then copy the folder from the white USB drive

Step 8. Copy the folders from the white USB drive to the DTF folder we've just created in C drive.



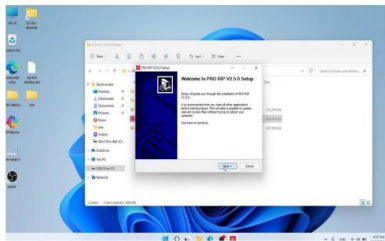
Step 9. Open the second folder 2. Drivers and software.



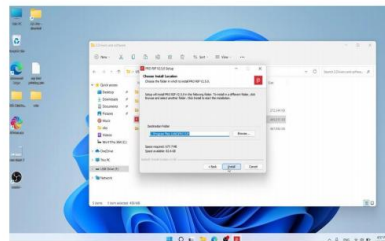
Open the second folder to install PRO RIP software

Step 10. Double click the red RIP icon to start the software installation.

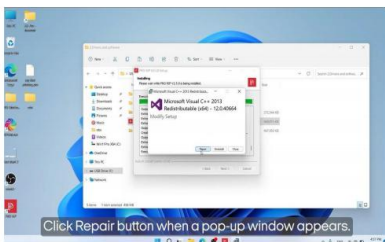
### 3. Software Setups



Step 11. Click *Next*.

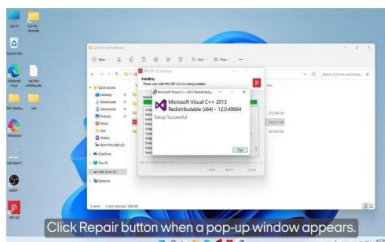


Step 12. Click *Install*.



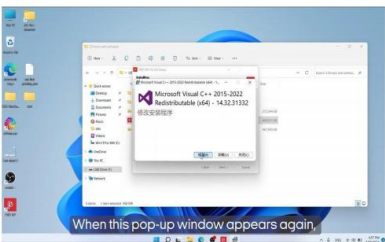
Click *Repair* button when a pop-up window appears.

Step 13. Click *Repair*.



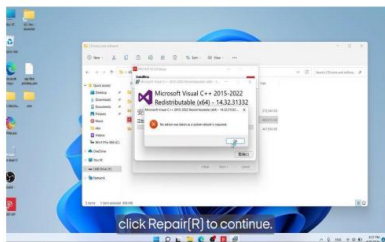
Click *Repair* button when a pop-up window appears.

Step 14. Click *Close*.



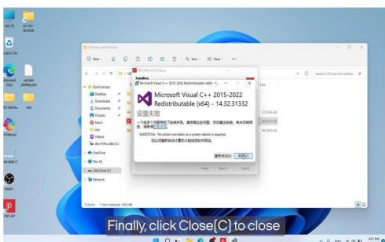
When this pop-up window appears again,

Step 15. Click *修复 [R]* to continue the repairing.



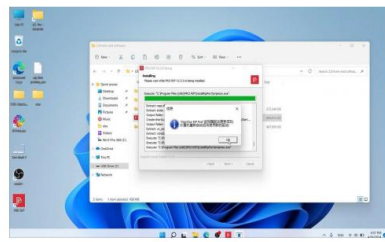
click *Repair(R)* to continue.

Step 16. Click *OK*.

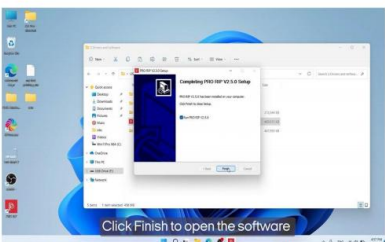


Finally, click *Close(C)* to close

Step 17. Click *关闭 [C]* to continue.

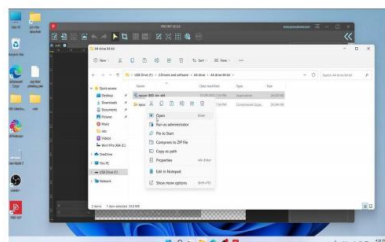


Step 18. Click *OK*.



Click *Finish* to open the software

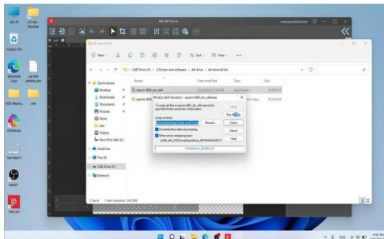
Step 19. Click *Finish* and the RIP software will pop out automatically.



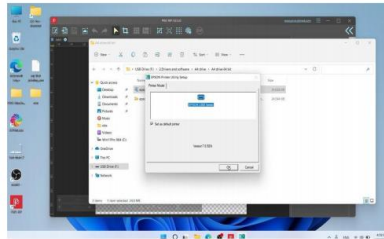
Step 20. Now we need to proceed driver installation, get driver here:  
*2.Drivers and software - A4 drive - A4 drive 64 bit - epson-1800\_drv\_x64.*



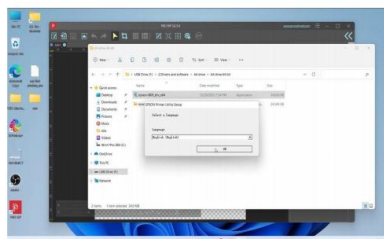
### 3. Software Setups



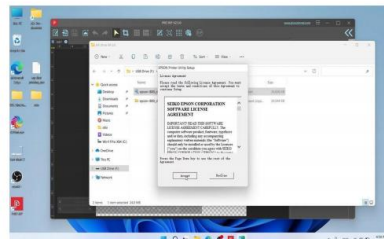
Step 21. During this installation, it is necessary to turn on the printer power and connect the data cable property. Then Click *Run WinZip*.



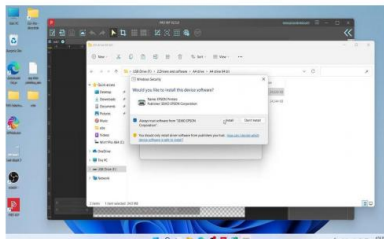
Step 22. Click *OK*.



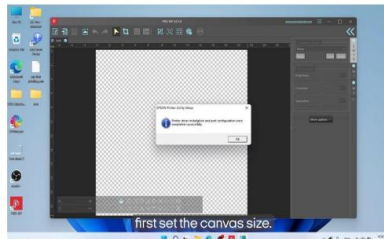
Step 23. Click *OK*.



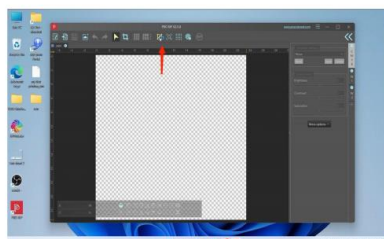
Step 24. Click *Accept*.



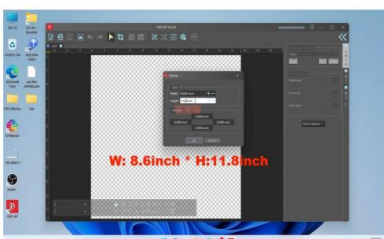
Step 25. Click *Install*.



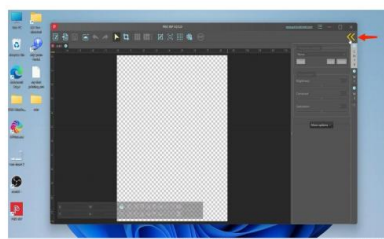
Step 26. Click *OK*, and the software installation has been finished. Now we start the software settings.



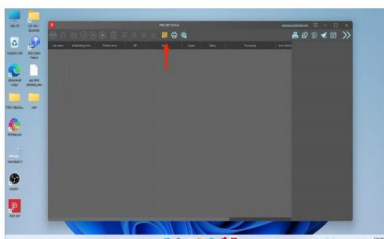
Step 27. Choose the square button to adjust the canvas.



Step 28. For A4 DTF L800, we set the canvas size as W:8.6inch \* H:11.8inch.

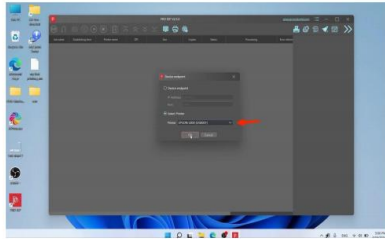


Step 29. Choose the left arrow button to go into the print management center.

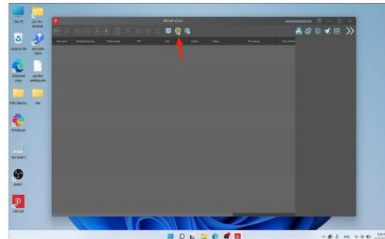


Step 30. Choose the double square icon to enter *Device endpoint*.

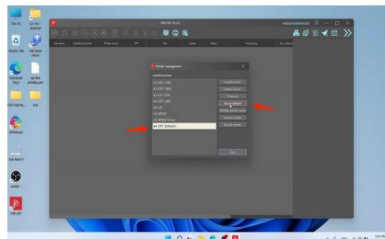
### 3. Software Setups



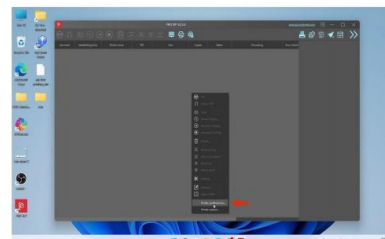
Step 31. Choose Epson L800 and click ok.



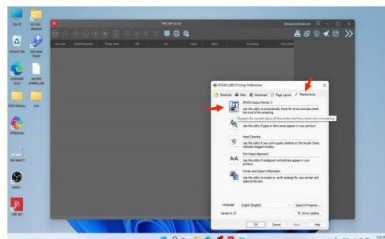
Step 32. Click the printer icon to enter *Printer Management*.



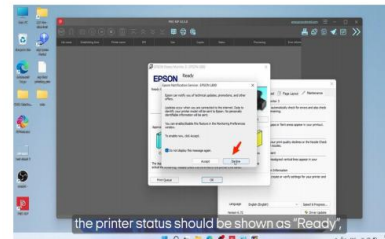
Step 33. Choose A4-DTF and click *Set as default*.



Step 34. Right click at the blank place and enter *Printer preferences*.

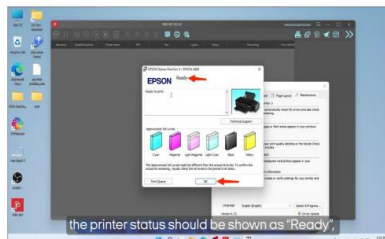


Step 35. Enter *Maintenance* and choose *EPSON Status Monitor 3*.



the printer status should be shown as "Ready".

Step 36. Click *Decline*.



the printer status should be shown as "Ready".

Step 37. At this moment, the printer status should be shown as "Ready". Then click *OK*.

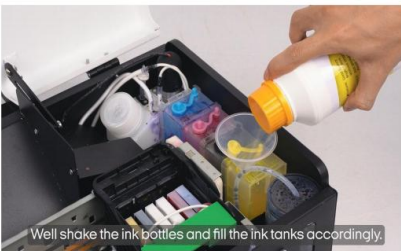
## 4. Ink Load



Step 1. Lift up the front cover.



Step 2. Remove the rubber lid of the ink hole in the ink tank.



Step 3. Add correspondent color ink into the ink tank, using a funnel.



Step 4. After finishing adding, put the rubber lid back.



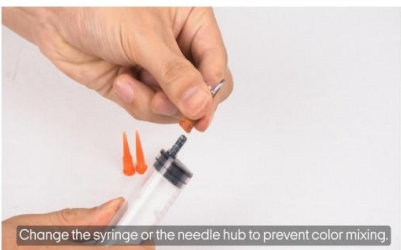
Step 5. Now we're going to extract some inks out of the ink cartridges. First remove all rubber lids of the vent holes.



Step 6. Take only one ink cartridge out at a time and always hold it upward.



Step 7. Extract 5ml inks out for every color.



Step 8. Remember to change the needle hub after the extracting of each color to avoid color mixing.



Step 9. Pull out the ink tube in the waste ink bottle.



Step 10. Also extract 5ml waste ink out. After all the extracting, don't forget to put all the rubber lids of the vent holes back.

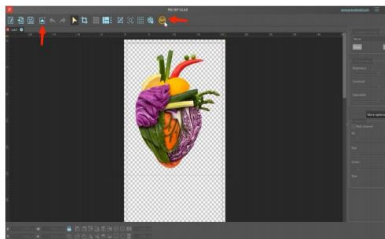
## 5. DTF Printing



Step 1. Press the first button to power on the printer.



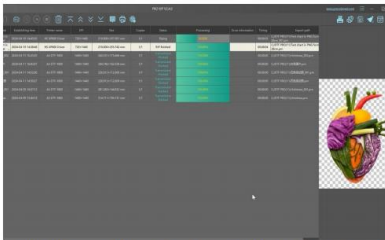
Step 2. The printer will be ready to proceed printing tasks when the button stops flashing.



Step 3. Click the picture+ icon to import the desired graphic, and adjust the size to set it within the printing canvas. Then press the RIP icon to initiate printing.



Step 4. Click Print.



Step 5. Then it will automatically switch to the printing queue.



Step 6. Wait for the printing to finish.



Step 7. When the printing is done, press the bottom middle button to load more film.



Step 8. And use the cutter to get the desired part.



Step 9. The DTF printing has done! To apply this on your shirt, you'll need to do more processing like powdering, curing and heat press. Please search for more Procolored videos online for related information.



\* You've finished all the tutorials! Thanks for choosing Procolored and we're ready to embark on the path of creativity with you! \*

## 6.Maintenance Plan

	Daily Beginning of the Day	Daily End of the Day	Weekly	As Needed
Shake White Bottles	1			
Nozzle Check	1			
Head Cleaning	1			
Fill Ink				1
Clean Around Head		1		
Clean Wiper Blades		1		
Clean Capping Station Top		1		
Flush Capping Station Top		1		
Empty Waste Tank			1	
Clean Pinch Roller			1	Every New film
Clean Encoder Strip			1	
Grease Carriage Rail				1
Rinse Ink Container				1
Clean Encoder disk				1

### Maintenance Schedule

1. Shake White Ink Bottle: To prevent white ink from settling, please shake the white ink bottle every day.
2. Nozzle Test [Check]: Perform a nozzle test before sending a print ob to ensure that you get good quality prints every time. Poor nozzles result in banding or over spray in the prints. Continue Printing if you can get 90% of the channels nozzles.
3. Head Cleaning: Perform this task when you are getting less than 90% of the channels nozzles. Perform Head cleaning is crucial to drain the capping station top and wipe the print head surface for nozzle test and or printing. After the head cleaning is done,perform a nozzle check to see if you can get 90% of the channels nozzles.
4. Power ink flush: Perform this when you notice any big missing nozzles or more than 50% of channels are missing, use a syringe to draw 5 ml of ink from the ink sac and 10-20 ml of ink from the waste ink tube, and then perform a Power Ink Flush task.

5. Clean Around the Head: It's important to clean around the head for any build-up inks at the end of every day. Build-up inks can get on to the print head from the wiper and can potentially damage the print head. **DO NOT USE ALCOHOL.**
6. Clean Wiper Blade: Same as cleaning around the head, making sure the wiper blade is cleaned. It is very important to obtain a good nozzle check. Any residue buildup can damage the print head and your head cleaning may not be effective. **DO NOT USE ALCOHOL.**
7. Clean Capping Station Cap Top: Keeping the capping station cap tops clean is one of the most important tasks. Your head cleaning may not be effective. Your printer may not draw out the proper amount of ink if there are a lot of build-up inks. **DO NOT USE ALCOHOL.**
8. Flush Capping Station Cap with Cleaning Solution: Fill cleaning solution on the cap after the end of the day maintenance and press the clean button to flush out the cap immediately. This will ensure the print head is sitting on the cap. **DO NOT USE ALCOHOL.**
9. Regularly check whether the ink sac is broken or leakage of ink occurs, if so, please replace the ink sac in a timely manner to avoid ink leakage to the print head, causing the print head to burn out.
10. Empty Waste Tank: Regularly check the waste ink bottle. Waste ink will overflow resulting in a dirty work surface, Please ensure that the waste ink lines are not touching the waste ink. It may cause negative pressure, which can cause the waste ink to reverse the ink discharge resulting in the print head, circuit board into the ink, damage to the print head, the motherboard and other components.
11. Clean Pinch Rollers: Clean pinch rollers ensure that you have a consistent pull on the film. Film residues can make the roller miss the turns which can cause misalignment on the White and CMYK heads. Use a dry microfiber cloth or lint-free wipe to clean the rollers. Weekly-clean one side, As you replace the film to new, clean 360 degrees.
12. Clean Encoder Strip: The encoder strip can be cleaned with isopropyl alcohol, simply wipe both sides/check for any dents or ink splash.
13. Grease Carriage Rail: If you hear squeaky noise, it's time to grease the rails. Use heat-resistant gel/paste-based grease. **DO NOT USE A SPRAYER.**
14. Rinse the Ink Containers: Ink can settle inside the container, please contact with Procolored tech staff before performing this task.

## 7. Notice and Tips

1. Do not move or touch the film when the printer is in operation. This can cause a head strike.
2. Please never leave any liquid on top of the printer cover. A small spill can damage the printer.
3. Do not expose the ink, film, and powder under direct sunlight, or a humid area. Avoid high humidity, high temperature, and direct sunlight. These will deteriorate the quality of the film, powder, and ink and may cause an issue. Use silica packs, and keep the consumables in containers with a lid.
4. Make sure you park the print head carriage to the capping station [back to home position] at the end of the day, leaving it not sitting properly on the cap can dry up the head and clog the system easily. If you are not sure whether the print head is in position, perform a head cleaning [from the printer] to move the print head back to the correct position
5. Make sure the film is horizontal and centered on the printing platform. Otherwise the film creases causing a head strike and damage the printer.
6. Try to use the printer at least every 3 - 4 days. Use the moisturizer to protect the print head when not in use on holidays.
7. Not using the printer for more than 2 weeks can cause the water-based ink to dry up which clogs the head. If there are no print jobs available, please at least print a test strip to create a print job. Daily maintenance is still recommended.
8. Use the correct consumables. Not using proper consumables or using other branded films, ink, powder, cleaning solution, swab, etc can damage the printer. Mixing of different brands of consumables, such as ink mixing, may cause blockage of the print head.
9. Refill the ink in a timely manner and do not let the ink level drop below one-third. Before adding new ink to the machine, be sure to shake the ink bottle several times to stop the ink from settling before adding. Seal the remaining ink properly and store it in a well-ventilated environment protected from light.
10. Use Procolored original print heads. Other low-cost, substandard print heads are usually refurbished through an aggressive cleaning process and have a short life span and the potential to damage the printer's motherboard.

11. Do not use a syringe to manually flush the print head. If the liquid comes into contact with the print head cable, it may damage the print head and the motherboard.
12. Printer out of service for more than half an hour, perform a print head cleaning task, and then continue to print, to avoid the situation of broken ink.
13. Do not use oversized syringes for ink extraction, as oversized syringes can cause damage to the print head due to excessive suction.
14. Do not manually inject cleaning solution from the nozzle position of the print head with a syringe, as this operation may easily cause damage to the print head and the motherboard.
15. Do not modify the machine yourself. Modification of the machine automatically voids the Procolored warranty and the machine is no longer warranted any more.
16. Please follow the maintenance schedule. Not following the maintenance can cause head clogs or serious printer damage.



## **8.Tech Support Contact Info**

**Facebook User Group:** <https://www.facebook.com/groups/194410629223200>

### **US Tech Support Contact Information:**

Timezone: Pacific Standard Time[PST]

Working Hours: 9:00 AM-5:00 PM

Working Days: Monday to Friday

E-mail/Skype: afterservice.us1@procolored.com

Tel: +1 949 738 4529

### **China Tech Support Contact Information:**

Timezone: Pacific Standard Time[PST]

Working Hours: 5:00 PM-5:00 AM

Working Days: Monday to Friday

E-mail/Skype: afterservice@procolored.com

Tel: +1 562 566 0518

## 9.Warranty Policy

### Section One - Warranty Policy

#### 1. Warranty Duration

For components not directly contact with ink, a warranty period of 12 months since printer purchase date is provided, unless damage is user-induced. Register warranty on our website to get warranty on some types of print head limited to one replacement.

#### 2. Warranty Coverage

##### 2.1 Main board

a. Main board for dual-head printer is not covered by warranty. Customers may send them in for repairs at their own expense.

b. Main board for single-head printer is covered by a 6-month warranty period since printer purchase. Within this warranty period, you are eligible for one replacement.

##### 2.2 Print Head and Related Components

No warranty is provided for print heads or components that may be damaged due to contact with ink. However, after warranty registration, the following print heads are covered by a 6-month warranty period since printer purchase, limited to one replacement: [L1800, R1390, L800, L805, TX800, XP600].

##### 2.3 Warranty for Other Accessories

Other accessories are covered by a 12-month warranty period since printer purchase.

##### 2.4 Disclaimer

a. The warranty for the ink-contact components requires the printer exclusively use Procolored inks. Warranty coverage does not include the print head blockage resulting from the use of inks from other brands.

b. The damage must not be caused by user negligence or misuse.

c. The damage must be confirmed by our customer service team or engineers as

non-user-induced.

### 3. Warranty Costs

3.1 If the component within warranty period is damaged within one month of printer receiving, we will bear the cost of component and covering the shipping fees.

3.2 For damage reported after one month of printer receipt, we will cover the cost of component but will not cover the shipping fees.

## **Section Two - Return Policy**

If the printer is received within one week and no ink is added, it can be shipped back in its original packaging, and returns and exchanges are accepted. If any ink has been added into the printer, we can not process returns or exchanges.

Please note that this warranty policy is subject to change, and any modifications will be posted on our Procolored website[<https://www.procolored.com/pages/warranty-policy>]. For any warranty claims or inquiries, please contact our customer service team.