

DTF A4 User Manual



Setting up and printing



Pro RIP Software Introduction

Content

1. Machine Check

2. Software & Driver Installation

3. Printing Showcase

4. Daily Maintenance

5. Maintenance Plan

6. Notice and Tips

7. Tech Support Contact Info

8. Warranty Policy

1. Machine Check



Step 1. Cut off the cable tie of ink tube.



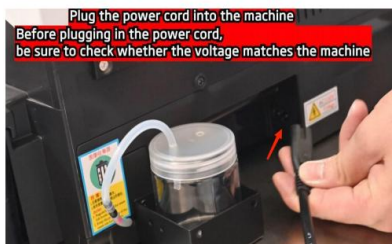
Step 2. Unscrew the two screws at the printer back.



Step 3. Install the waste ink bottle tray on and fasten the screws.



Step 4. Insert the ink tube into the bottle.



Step 5. Now plug the cord in. Before plugging in the power cord, be sure to check whether the voltage matches the machine.



Step 6. Open the paper exit.



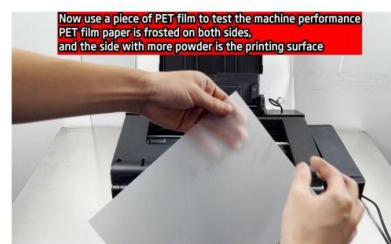
Step 7. Fully elongate the exit tray.



Step 8. Press the switch button to turn the printer on.



Step 9. The printer will automatically initiate a self-testing during which the switch button will keep blinking.



Step 10. When the button stays on without any flashing, put a PET film in the printer. Attention, the side with more powder on should be the PET printing surface.

1. Machine Check



Step 11. Press the paper button to check the film loading.



Step 12. After the film is successfully released, the switch button should be always on. If not so, please contact our customer services.



Step 13. Put the ink tank flat on desk.



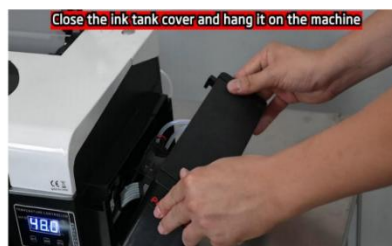
Step 14. Open the tank cover. And pay attention to the ink color labels. C refers to cyan ink, M refers to magenta ink, Y refers to yellow ink, K refers to black ink and W refers to white ink



Step 15. Add corresponding inks into these containers. Attention that the max tank capacity of each color is 80ml.



Step 16. Put the piston back in place after every ink-adding.

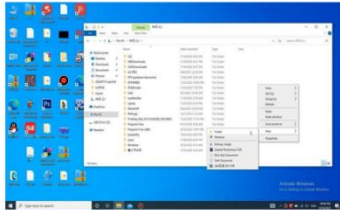


Step 17. When the ink-adding is finished, close the tank lid then gently lift the ink tank up.

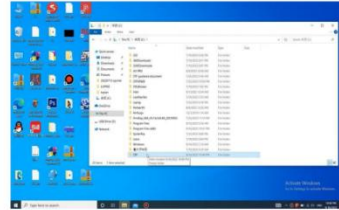


Step 18. And put it back to the original place.

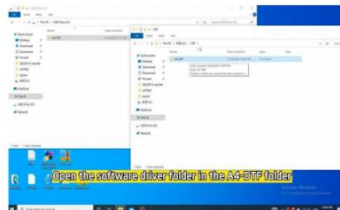
2. Software Driver Installation



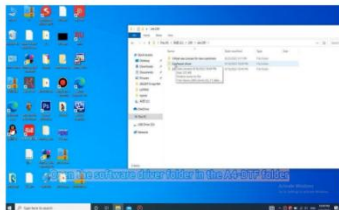
Step 1. Create a new folder in C Drive



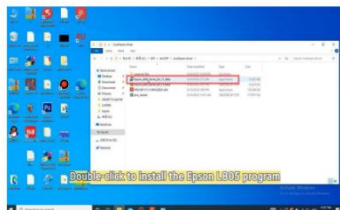
Step 2. Name it as "DTF".



Step 3. Insert the USB driver that Procolored provides. Open it, copy the A4-DTF folder to the DTF folder we just created in C drive.



Step 4. Open 2 software driver.



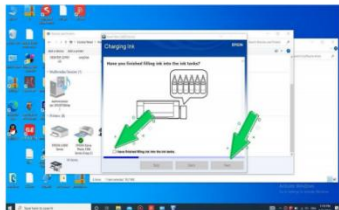
Step 5. Doubleclick the Epson-L805 application.



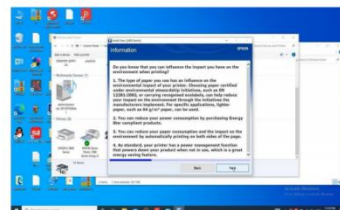
Step 6. Click "accept" and Next.



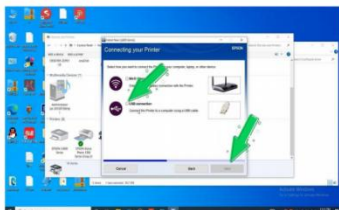
Step 7. Choose "re-install" and click Next.



Step 8. Choose "have finished" and click Next.

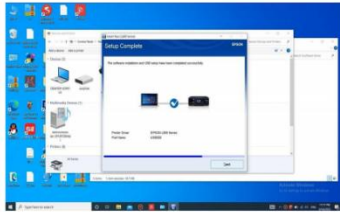


Step 9. Click Next.

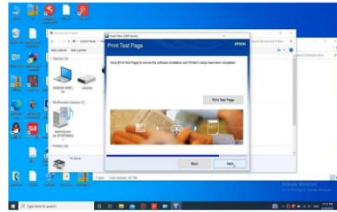


Step 10. Choose USB and click Next.

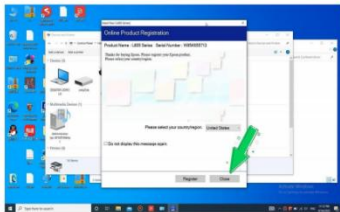
2. Software Driver Installation



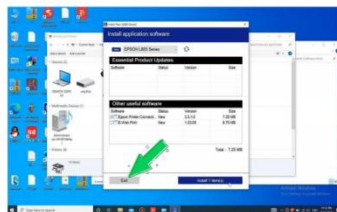
Step 11. Click Next.



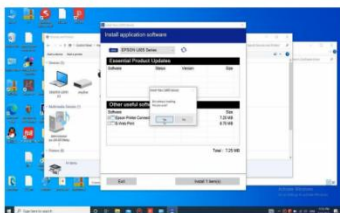
Step 12. Click Next.



Step 13. Click Close.



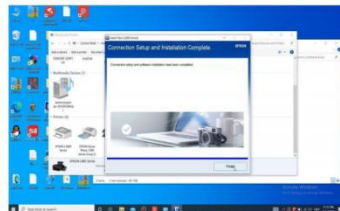
Step 14. Click Exit.



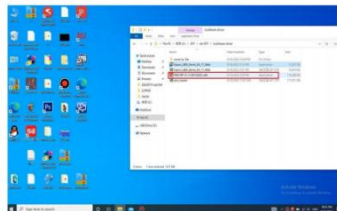
Step 15. Click Yes.



Step 16. Then an Epson website will pop out, you can shut it down directly.



Step 17. Click Finish.



Step 18. Now we go back to 2software driver, double click RIP to install the software.

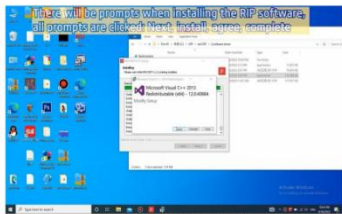


Step 19. Click Next here.

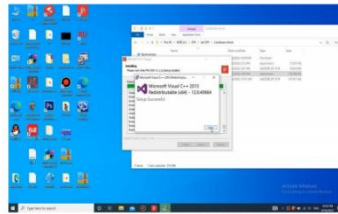


Step 20. Click install.

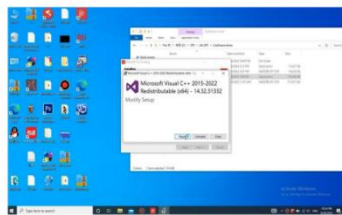
2. Software Driver Installation



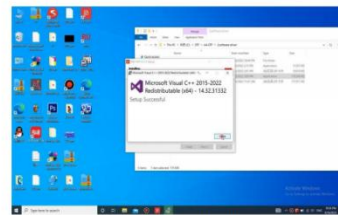
Step 21. Click Repair.



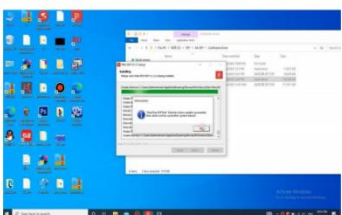
Step 22. Click Close.



Step 23. Click Repair.



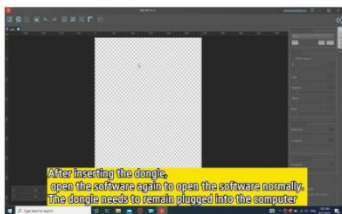
Step 24. Click Close.



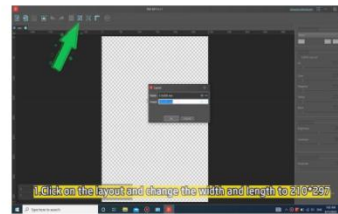
Step 25. Click OK.



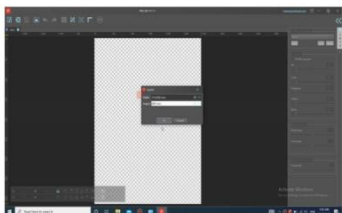
Step 26. And the RIP shortcut will be automatically added on your desktop.



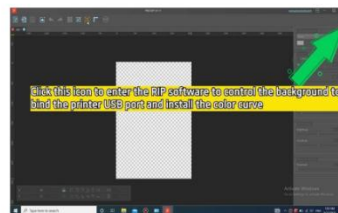
Step 27. Insert the blue dongle in your computer, and open RIP software (the dongle is needed every time you open the software).



Step 28. Choose the square button to adjust the canvas.

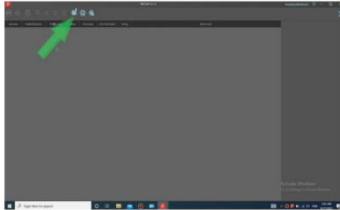


Step 29. For DTF L805, here we set it as W210,000mm* H297,000mm.

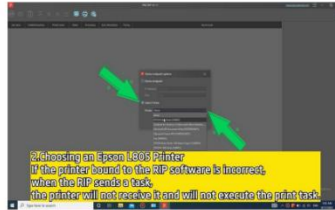


Step 30. Choose the left arrow button to go into the print management center.

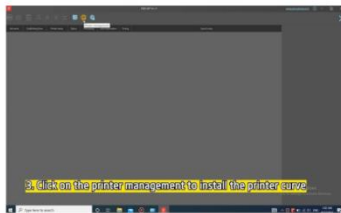
2. Software Driver Installation



Step 31. Choose the double square button to enter device endpoint options.



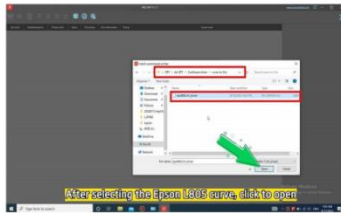
Step 32. Select your printer (Epson L805 here) and click OK.



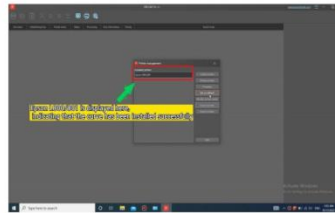
Step 33. Choose the printer button.



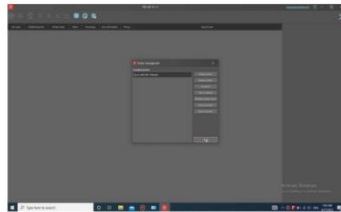
Step 34. Click import printer.



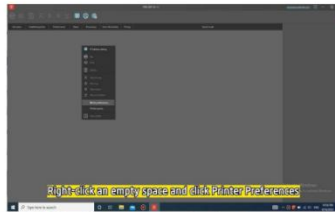
Step 35. Follow below to choose DTF L805 curve file: C:\Drive\DTF-A4 DTF-2 software driver-curve.icc file



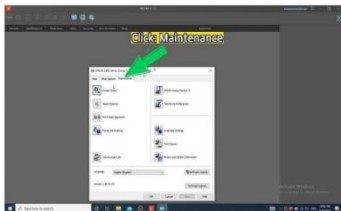
Step 36. Set the printer as default.



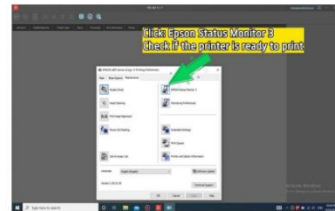
Step 37. Click Quit.



Step 38. Right click at somewhere blank and enter Printer Preferences.

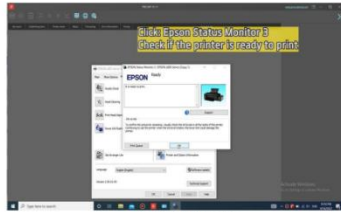


Step 39. Enter Maintenance.



Step 40. Choose Epson Status Monitor 3.

2. Software Driver Installation



Step 41. Click Ok.



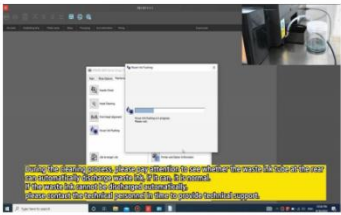
Step 42. Choose Power Ink Flushing.



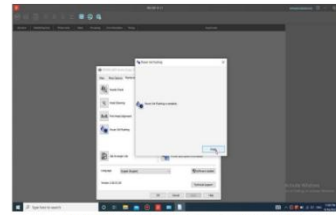
Step 43. Click Cancel.



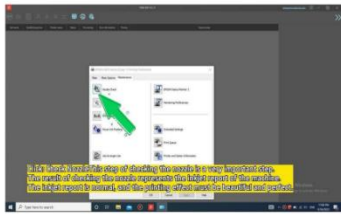
Step 44. Click Start.



Step 45. During the ink flushing, waste ink should be automatically discharged through the ink tube, if not, please contact our customer services.



Step 46. When the flushing is over, click Finish.



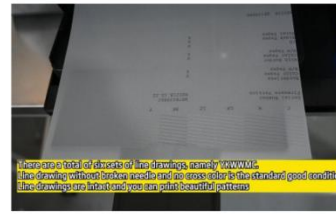
Step 47. Click Nozzle Check.



Step 48. Click Print.

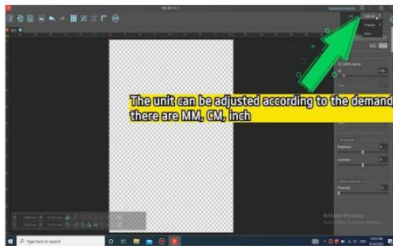


Step 49. The printer will print a test page presenting how the ink supply and nozzle are going on.

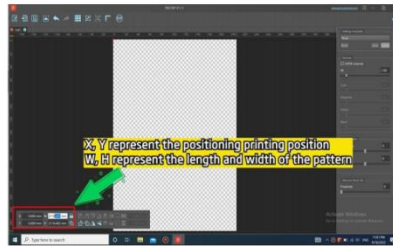


Step 50. Check the test page. If there are too many broken lines, clean the print head again.

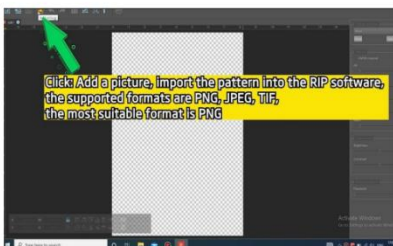
3. Printing Showcase



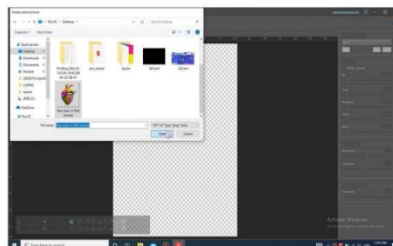
Step 1. Choose the strip button on the right top corner. You can change the scale unit and language here.



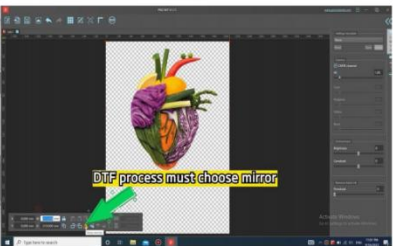
Step 2. X and Y here represent the printing placement, W and H represent the pattern size.



Step 3. Choose the picture button.



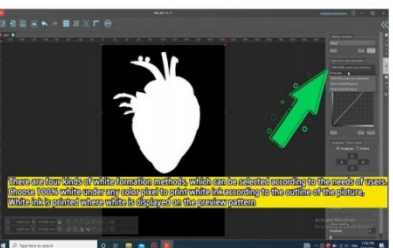
Step 4. Import the picture you intend to print, should be of PNG or JPG format.



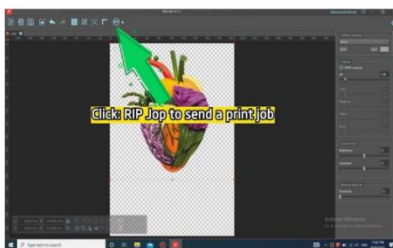
Step 5. Mirror mode must be chosen for DTF printing.



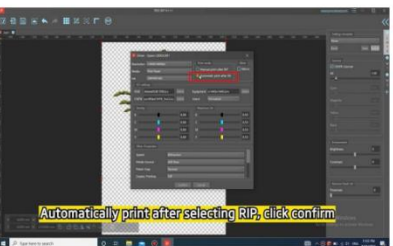
Step 6. L805 DTF has two white ink channels, so here we need to click + icon to add one more white channel.



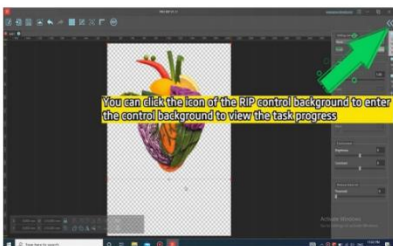
Step 7. Choose 100% White under any color pixel.



Step 8. Click RIP to start printing.



Step 9. Choose Automatic print after RIP, then click confirm.

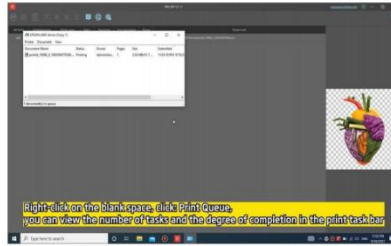


Step 10. Choose the left arrow button to go into the print management center.

3. Printing Showcase



Step 11. Right click at somewhere blank and enter printer queue.



Step 12. Here you can check all the printing tasks.



Step 13. The switch button will keep flashing till the printing task is finished.



Step 14. Get the printed film. With printing face down, spread the powder on the back of the printing film. Make sure the powder are spread evenly.



Step 15. Don't forget to shake the film slightly to remove the spare powder in the end.



Step 16. Plug the oven in and turn it on.



Step 17. To cure the printing film, set the oven with curing temperature 120°C and curing time 200s.



Step 18. With printing film face down, gently put the film on the oven pad. And start the curing.

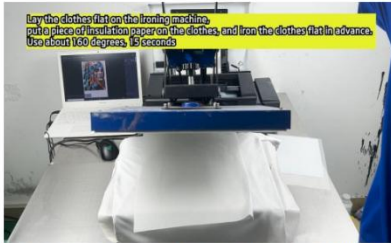


Step 19. When the curing is over, carefully fetch the hot cured film.

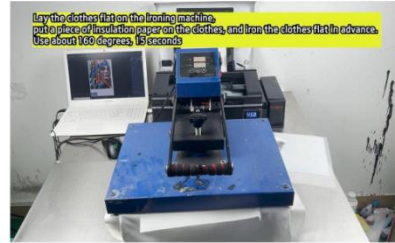


Step 20. Turn the heat pressing machine on.

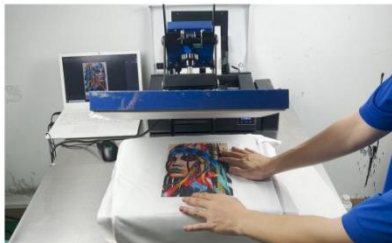
3. Printing Showcase



Step 21. First we need a preheating for the clothes. Put the clothes flat on the pressing pad. It's recommended to add an insulation paper on the clothes to achieve more even pressing.



Step 22. Set the heat pressing machine with 160 °C working temperature and 15s pressing time, then close the machine lid.



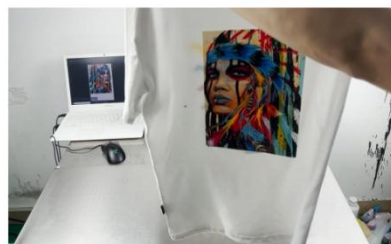
Step 23. After preheating, now we apply the printing film onto the clothes, an insulation paper can be put over the film too.



Step 24. Set the heat pressing machine with 160 °C working temperature and 45s pressing time, then close the machine lid.



Step 25. When the heat pressing is done, wait until the printing has cooled down, then gently peel off the film.

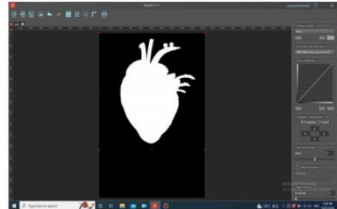


Step 26. Congratulations on finishing your first DTF T-shirt!

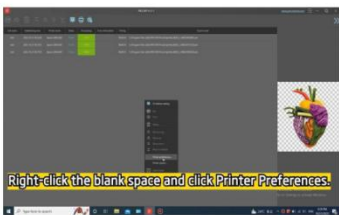
4. Daily Maintenance



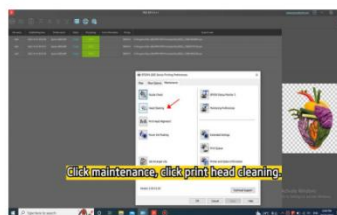
Step 1. Turn the printer on. If the switch button stays on without flashing, that means the machine is ready for any operation.



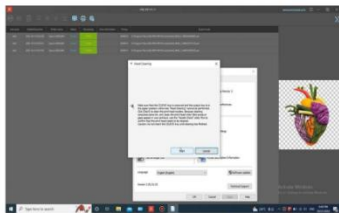
Step 2. Open PRO RIP software. Choose the left arrow button to go into the print management center.



Step 3. Right click at somewhere blank and enter Printer Preferences.



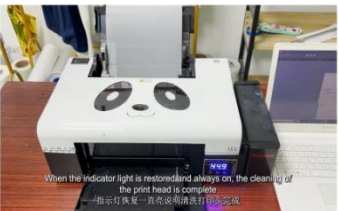
Step 4. Click Head Cleaning.



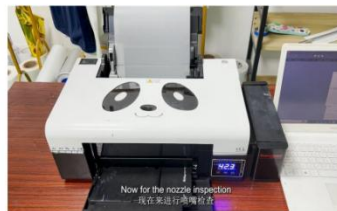
Step 5. Click Start.



Step 6. During the head cleaning process, the switch button will keep flashing.



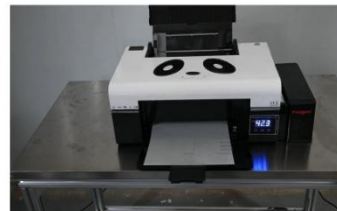
Step 7. It will stop flashing when the cleaning process is done.



Step 8. Now we go on with the nozzle check.

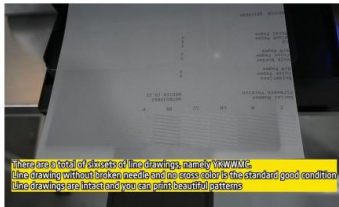


Step 9. Click Nozzle Check



Step 10. Wait for the test page to come out.

4. Daily Maintenance



Step 11. Check the test page. If there are too many broken lines, clean the print-head again.



Step 12. Then we go on with the manual machine cleaning. First open the top cover.



Step 13. Open it to the maximum angle.



Step 14. Dip lint-free cloth with alcohol.



Step 15. We now need to gently clean ①encoder strip and ②printer belt with the lint-free cloth. They're supposed to be cleaned every 7 days.



Step 16. Next we're going to add lubricating oil to the guide rail. This should be done once a month.



Step 17. Press the left fourth button for 5 seconds to move the print head assembly.



Step 18. When the print head assembly moves out a little, cut down the printer power.



Step 19. Gently drag or push the print head assembly.

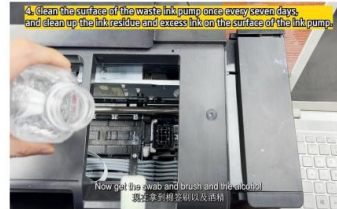


Step 20. And put it on the farthest left.

4. Daily Maintenance



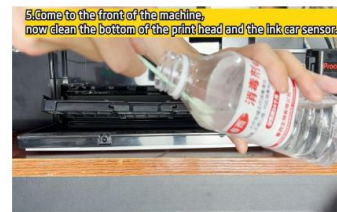
Step 21. This time a lint-free swab will be needed.



Step 22. Dip the swab with alcohol.



Step 23. Carefully clean the waste pump to remove all the ink residues. Attention not to touch the silicone sealing around.



Step 24. Get another clean swab, we're going to clean the print head bottom.



Step 25. First we plug the printer in and turn it on again.



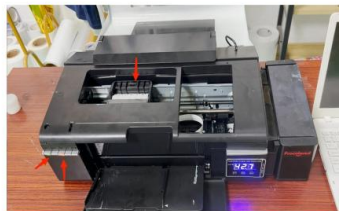
Step 26. Manually move the print head assembly to the middle this time.



Step 27. Use swabs to clean the print head bottom.



Step 28. After the cleaning, press the switch button to set the print head assembly back to the farthest right.



Step 29. When the switch button stays on, the third button off and the print head assembly stays on the right, the printer is back to its normal working status.



Step 30. Besides above daily maintenance, it's also recommended to occasionally check if there's enough ink left.

4. Daily Maintenance



Step 31. Also, from time to time, check the waste ink bottle, empty or change it if needed.



Step 32. Every time after you finish using the printer, long press the switch button to turn the printer off.



Step 33. Only when the switch button stays off can you switch off the printer power. This is the most effective way to protect your printer.

5.Maintenance Plan

	Daily Beginning of the Day	Daily End of the Day	Weekly	As Needed
Shake White Bottles	1			
Nozzle Check	1			
Head Cleaning	1			
Fill Ink				1
Clean Around Head		1		
Clean Wiper Blades		1		
Clean Capping Station Top		1		
Flush Capping Station Top		1		
Empty Waste Tank			1	
Clean Pinch Roller			1	Every New film
Clean Encoder Strip			1	
Grease Carriage Rail				1
Rinse Ink Container				1
Clean Encoder disk				1

Maintenance Schedule

1. Shake White Ink Bottle: To prevent white ink from settling, please shake the white ink bottle every day.
2. Nozzle Test [Check]: Perform a nozzle test before sending a print ob to ensure that you get good quality prints every time. Poor nozzles result in banding or over spray in the prints. Continue Printing if you can get 90% of the channels nozzles.
3. Head Cleaning: Perform this task when you are getting less than 90% of the channels nozzles. Perform Head cleaning is crucial to drain the capping station top and wipe the print head surface for nozzle test and or printing. After the head cleaning is done,perform a nozzle check to see if you can get 90% of the channels nozzles.
4. Power ink flush: Perform this when you notice any big missing nozzles or more than 50% of channels are missing, use a syringe to draw 5 ml of ink from the ink sac and 10-20 ml of ink from the waste ink tube, and then perform a Power Ink Flush task.

5. Clean Around the Head: It's important to clean around the head for any build-up inks at the end of every day. Build-up inks can get on to the print head from the wiper and can potentially damage the print head. **DO NOT USE ALCOHOL.**
6. Clean Wiper Blade: Same as cleaning around the head, making sure the wiper blade is cleaned. It is very important to obtain a good nozzle check. Any residue buildup can damage the print head and your head cleaning may not be effective. **DO NOT USE ALCOHOL.**
7. Clean Capping Station Cap Top: Keeping the capping station cap tops clean is one of the most important tasks. Your head cleaning may not be effective. Your printer may not draw out the proper amount of ink if there are a lot of build-up inks. **DO NOT USE ALCOHOL.**
8. Flush Capping Station Cap with Cleaning Solution: Fill cleaning solution on the cap after the end of the day maintenance and press the clean button to flush out the cap immediately. This will ensure the print head is sitting on the cap. **DO NOT USE ALCOHOL.**
9. Regularly check whether the ink sac is broken or leakage of ink occurs, if so, please replace the ink sac in a timely manner to avoid ink leakage to the print head, causing the print head to burn out.
10. Empty Waste Tank: Regularly check the waste ink bottle. Waste ink will overflow resulting in a dirty work surface, Please ensure that the waste ink lines are not touching the waste ink. It may cause negative pressure, which can cause the waste ink to reverse the ink discharge resulting in the print head, circuit board into the ink, damage to the print head, the motherboard and other components.
11. Clean Pinch Rollers: Clean pinch rollers ensure that you have a consistent pull on the film. Film residues can make the roller miss the turns which can cause misalignment on the White and CMYK heads. Use a dry microfiber cloth or lint-free wipe to clean the rollers. Weekly-clean one side, As you replace the film to new, clean 360 degrees.
12. Clean Encoder Strip: The encoder strip can be cleaned with isopropyl alcohol, simply wipe both sides/check for any dents or ink splash.
13. Grease Carriage Rail: If you hear squeaky noise, it's time to grease the rails. Use heat-resistant gel/paste-based grease. **DO NOT USE A SPRAYER.**
14. Rinse the Ink Containers: Ink can settle inside the container, please contact with Procolored tech staff before performing this task.

6. Notice and Tips

1. Do not move or touch the film when the printer is in operation. This can cause a head strike.
2. Please never leave any liquid on top of the printer cover. A small spill can damage the printer.
3. Do not expose the ink, film, and powder under direct sunlight, or a humid area. Avoid high humidity, high temperature, and direct sunlight. These will deteriorate the quality of the film, powder, and ink and may cause an issue. Use silica packs, and keep the consumables in containers with a lid.
4. Make sure you park the print head carriage to the capping station [back to home position] at the end of the day, leaving it not sitting properly on the cap can dry up the head and clog the system easily. If you are not sure whether the print head is in position, perform a head cleaning [from the printer] to move the print head back to the correct position
5. Make sure the film is horizontal and centered on the printing platform. Otherwise the film creases causing a head strike and damage the printer.
6. Try to use the printer at least every 3 - 4 days. Use the moisturizer to protect the print head when not in use on holidays.
7. Not using the printer for more than 2 weeks can cause the water-based ink to dry up which clogs the head. If there are no print jobs available, please at least print a test strip to create a print job. Daily maintenance is still recommended.
8. Use the correct consumables. Not using proper consumables or using other branded films, ink, powder, cleaning solution, swab, etc can damage the printer. Mixing of different brands of consumables, such as ink mixing, may cause blockage of the print head.
9. Refill the ink in a timely manner and do not let the ink level drop below one-third. Before adding new ink to the machine, be sure to shake the ink bottle several times to stop the ink from settling before adding. Seal the remaining ink properly and store it in a well-ventilated environment protected from light.
10. Use Procolored original print heads. Other low-cost, substandard print heads are usually refurbished through an aggressive cleaning process and have a short life span and the potential to damage the printer's motherboard.

11. Do not use a syringe to manually flush the print head. If the liquid comes into contact with the print head cable, it may damage the print head and the motherboard.
12. Printer out of service for more than half an hour, perform a print head cleaning task, and then continue to print, to avoid the situation of broken ink.
13. Do not use oversized syringes for ink extraction, as oversized syringes can cause damage to the print head due to excessive suction.
14. Do not manually inject cleaning solution from the nozzle position of the print head with a syringe, as this operation may easily cause damage to the print head and the motherboard.
15. Do not modify the machine yourself. Modification of the machine automatically voids the Procolored warranty and the machine is no longer warranted any more.
16. Please follow the maintenance schedule. Not following the maintenance can cause head clogs or serious printer damage.

7. Tech Support Contact Info

After-sales contact information:

E-mail/Skype: afterservice@procolored.com

Hotline: +1 9497384529

Facebook user group: <https://www.facebook.com/groups/194410629223200>

Working Hours:

Pacific Time [PT]: From 5:00 PM on

Central Time [CT]: From 7:00 PM on

Eastern Time [ET]: From 8:00 PM on

8.Warranty Policy

Section One - Warranty Policy

1. Warranty Duration

For components not directly contact with ink, a warranty period of 12 months since printer purchase date is provided, unless damage is user-induced. Register warranty on our website to get warranty on some types of print head limited to one replacement.

2. Warranty Coverage

2.1 Main board

a. Main board for dual-head printer is not covered by warranty. Customers may send them in for repairs at their own expense.

b. Main board for single-head printer is covered by a 6-month warranty period since printer purchase. Within this warranty period, you are eligible for one replacement.

2.2 Print Head and Related Components

No warranty is provided for print heads or components that may be damaged due to contact with ink. However, after warranty registration, the following print heads are covered by a 6-month warranty period since printer purchase, limited to one replacement: [L1800, R1390, L800, L805, TX800, XP600].

2.3 Warranty for Other Accessories

Other accessories are covered by a 12-month warranty period since printer purchase.

2.4 Disclaimer

a. The warranty for the ink-contact components requires the printer exclusively use Procolored inks. Warranty coverage does not include the print head blockage resulting from the use of inks from other brands.

b. The damage must not be caused by user negligence or misuse.

c. The damage must be confirmed by our customer service team or engineers as

non-user-induced.

3. Warranty Costs

3.1 If the component within warranty period is damaged within one month of printer receiving, we will bear the cost of component and covering the shipping fees.

3.2 For damage reported after one month of printer receipt, we will cover the cost of component but will not cover the shipping fees.

Section Two - Return Policy

If the printer is received within one week and no ink is added, it can be shipped back in its original packaging, and returns and exchanges are accepted. If any ink has been added into the printer, we can not process returns or exchanges.

Please note that this warranty policy is subject to change, and any modifications will be posted on our Procolored website[<https://www.procolored.com/pages/warranty-policy>]. For any warranty claims or inquiries, please contact our customer service team.