



# **A3+ Roller version Dtf Printer manual**





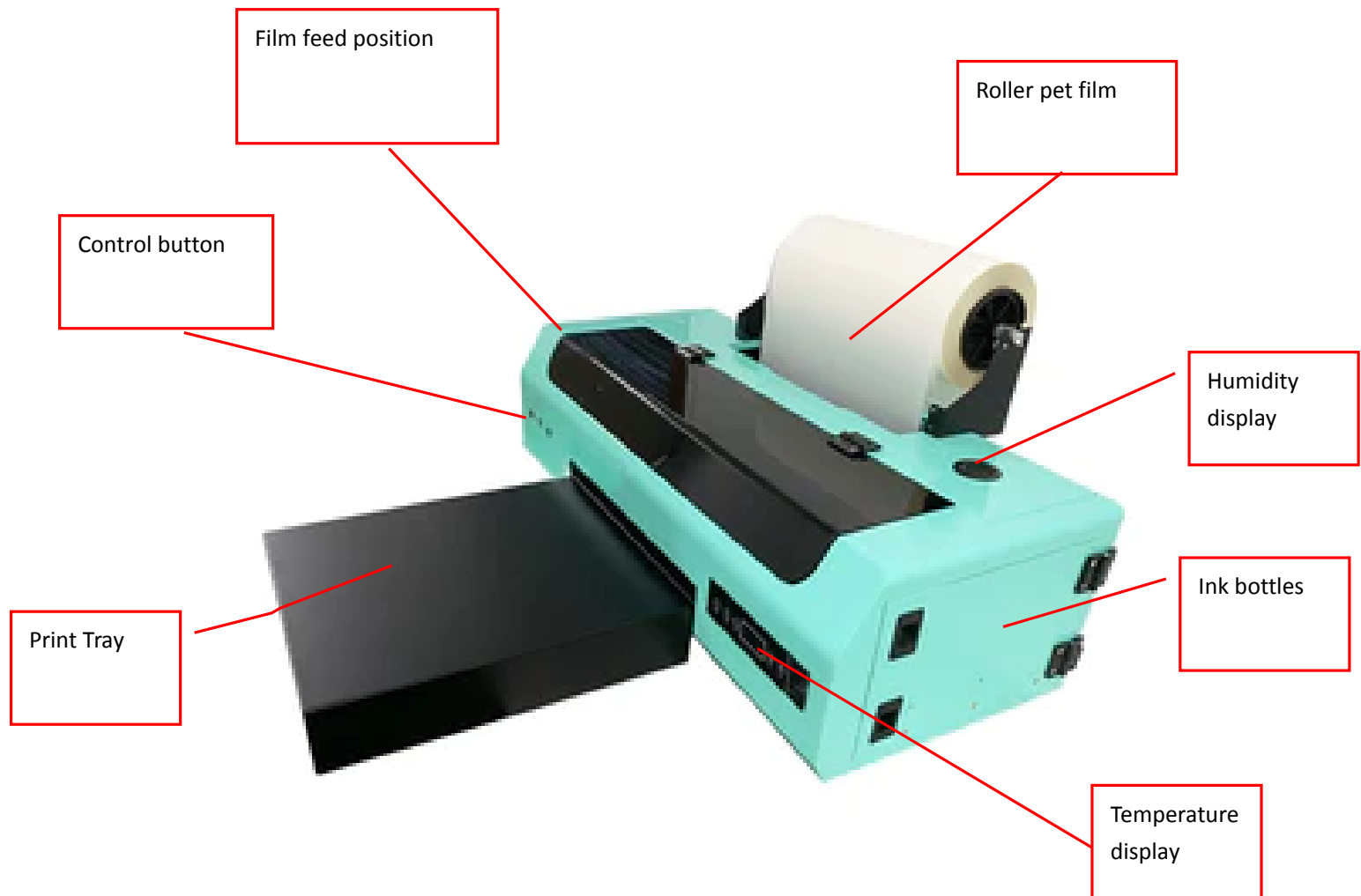
# Table of Contents

Safety Instructions .....	3
Machine Views .....	4
Introduction of printer buttons .....	5
1.Connect the printer .....	6
2.Install the drive .....	7
3.Install the rip software .....	错误！未定义书签。
4.Install print curves .....	错误！未定义书签。
5.Machine Installation And Setting .....	错误！未定义书签。
6.Whole process of printing .....	错误！未定义书签。
7.Maintenance .....	错误！未定义书签。




# Safety Instructions

1. Read all instructions.
2. Use the A3 L1800 Roller Printer only for its intended use.
3. To reduce the risk of electric shock, do not immerse the DTF printer in water or other liquids.
4. Do not disassemble or attempt to repair the DTF printer. Take it to a qualified service person for examination and repair.
5. This equipment is not intended for use by persons (including children) with reduced physical, sensory or mental capabilities, or lack of experience and knowledge, unless they have been given supervision or instruction concerning use of this equipment by a person responsible for their safety.
6. Close supervision is necessary for any DTF printer being used by or near children. Do not leave equipment unattended while connected.
7. The A3 L1800 Roller Printer needs routine maintenance, please refer to the included manual.

# Machine Views



# Introduction of printer buttons

start button		Press this button to open and close the printer power
Ink		Press this button to move the print head to the cartridge change location. When detecting the service life of the cartridge market, press this button to print the head to the ink check position. After changing the cartridge, press this button to return the print head to the initial position. When the ink indicator lights go out, press the button for 3 seconds to clean the print head.
Printing paper		Press this button to load or pop out the print paper. You can resume printing if you press this button when there is a lack of paper error or multiple page feed errors. Press this button when printing jobs to cancel the print.



# 1. Install the roll film and waste ink bottle

Video:<https://www.youtube.com/watch?v=ttPdkVoihEY>

1.1 Install the waste ink bottle



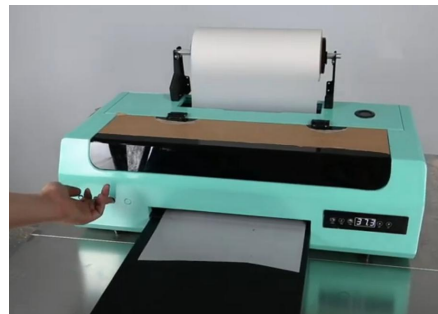
1.2 Install pet film



1.3 Press the forward button



1.4 Place the printing platform and press the power on button



## 2, Guide the ink

Video:<https://www.youtube.com/watch?v=NAAtEROUFn0>

### 2.1 Open the ink chamber and add ink



### 2.2 Use a syringe to draw ink from 6 ink cartridges



### 2.3 Use a syringe to extract 20ml of ink from the waste ink pump



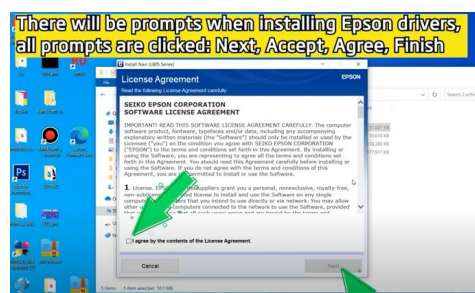
### 2.4 Press the ink key to start automatic ink extraction



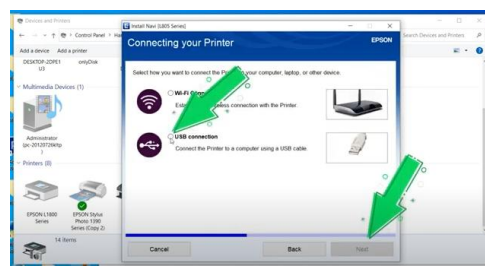
## 3. Install the driver and PRO RIP Software

Video:<https://www.youtube.com/watch?v=nDeuMpmUzVI>

### 3.1 Install Driver



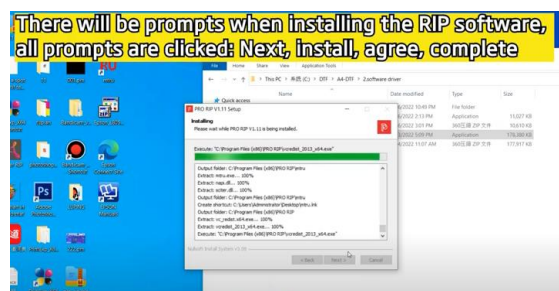
### 3.2 Select USB connection



### 3.3 Insert USB dongle



### 3.4 Install PRO RIP software

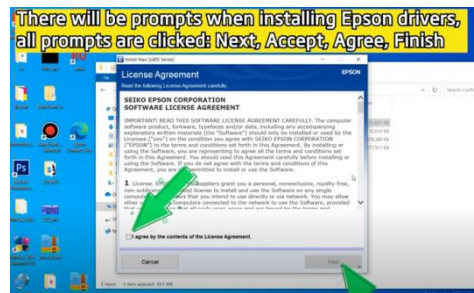




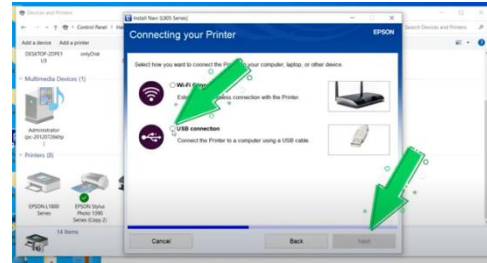
# 4.Install the PRO RIP and print

Video:<https://www.youtube.com/watch?v=nDeuMpmUzVI>  
[ube.com/watch?v=tSQJETK8zkk](https://www.youtube.com/watch?v=tSQJETK8zkk)

## 2.5 Install Driver



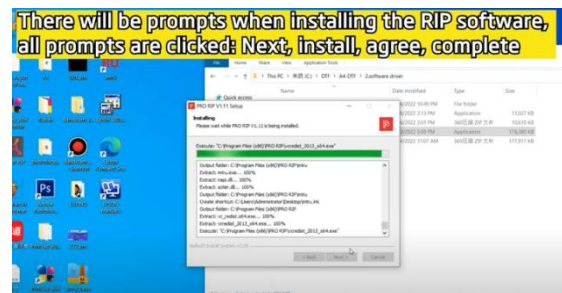
## 2.2 Select USB connection



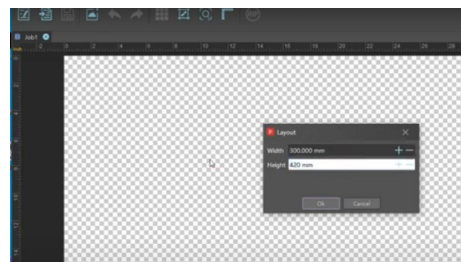
## 2.6 Insert USB dongle



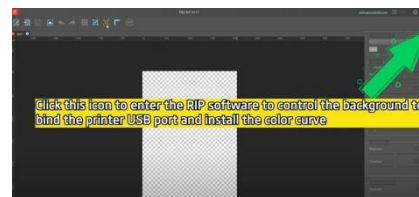
## 2.4 Install PRO RIP software



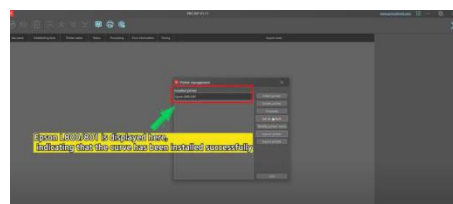
## 2.5 Set Print Area Size 300, 420



## 2.6 Select the correct printer driver



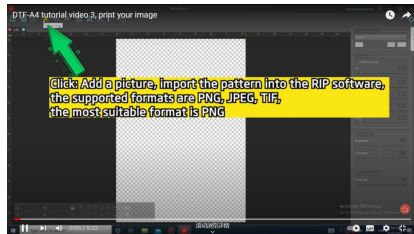
## 2.7.Installation curve



# 5.print your image

Video:<https://www.youtube.com/watch?v=h00PBRGjz4w>

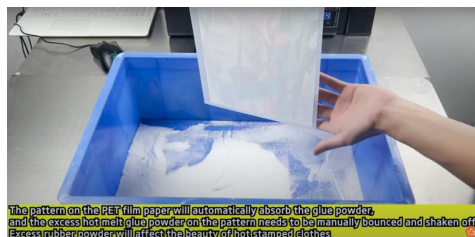
## 3.1 Load pictures into rip software



## 3.2 Select Mirror Print



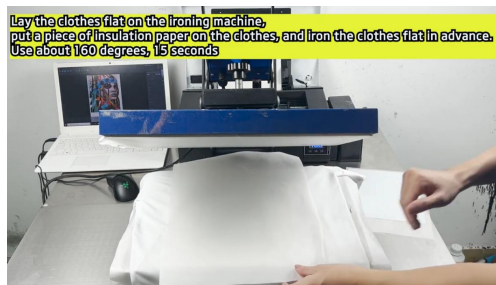
## 3.3 Coat the printed PET film with hot melt adhesive powder



## 3.4 Bake at 120 °C for 200 seconds



## 3.5 Press the clothes to be printed at 160 °C for 15 seconds



## 3.6 Press the baked PET film at 160 °C for 45 seconds



## 3.7 Tear off the pet film after it cools down



**Notice:**

1. The print head and waste ink pump are not covered by the warranty. Due to the characteristics of DTF ink, if the print head is not used for a long time, the print head is easily blocked. Please carefully maintain the print head. If you do not use it for more than three days, please install the print head moisturizing solution. , you can contact our after-sales service to get the operation method;
2. Check the ink stock regularly, and replenish the ink when it is almost used up;
3. Regularly check the ink in the waste ink bottle. If the waste ink bottle is full, clean it in time;
3. After the printing task is completed, the printer should be properly turned off. It is prohibited to expose the print head to the air for a long time.