

C. INSTALLING IN MASONRY

WARNING: Ensure you have a minimum of 35mm of actual concrete/brick thickness in the hole for the anchors. Do not drill into mortar joints. Installer must verify that the supporting surface will safely support the combined weight of the TV Wall Mount and speaker.

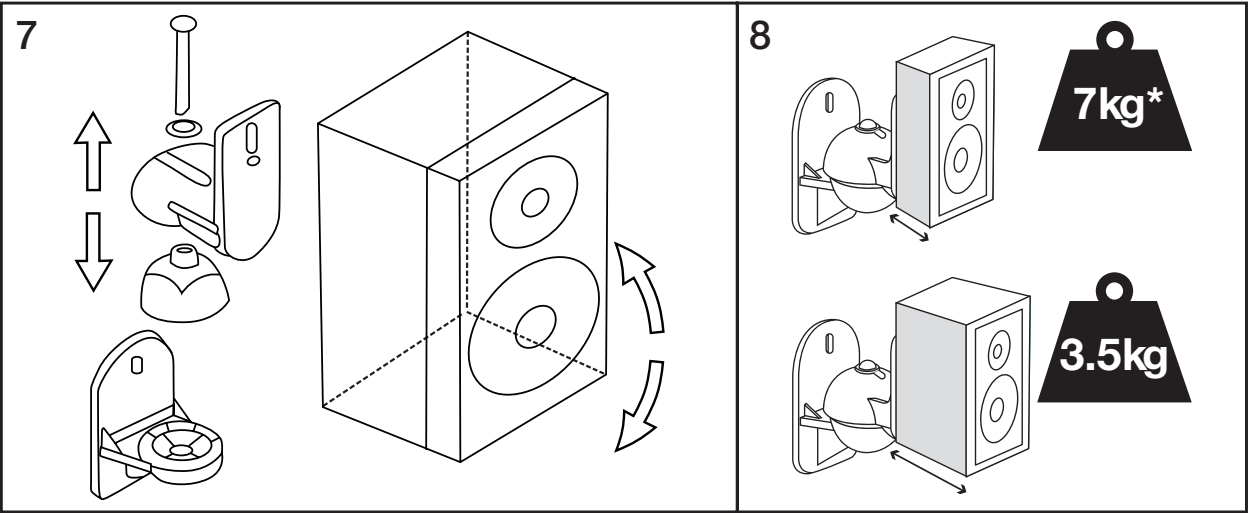
The Crest Company holds no responsibility for incorrectly installed Speaker Wall Mounts.

- 1. Mark 2 fixing holes using the wall plate as a guide. Ensure plate is straight and level.
- 2. Pre-drill holes to a depth of 25mm using 5.5mm masonry drill bit. Clean out holes.
- 3. Fully insert the concrete anchors (B) in the drill holes. Tap with hammer if required.
- 4. Attach the wall plate using the 25mm woodscrews (A) into each concrete anchor (B). Do not over tighten.

The Crest Company is not responsible for any damage that may be caused by incorrect installation.

Step 4: Mount Speaker to Wall Plate

- 1. Re-assemble the speaker Wall Mounts by attaching the speaker and speaker wall plate onto the already mounted wall plate using the screw/washer and swivel that was disassembled in ‘Step 1’.
- 2. Once you have positioned the speaker into the desired position, tighten the main screw.
- 3. To reposition the speaker simply loosen the main screw and tighten again once you have the correct position. Check your Speaker Wall Mounts are secure and safe to use at regular intervals (at least every three months).



Maximum Loading Weight

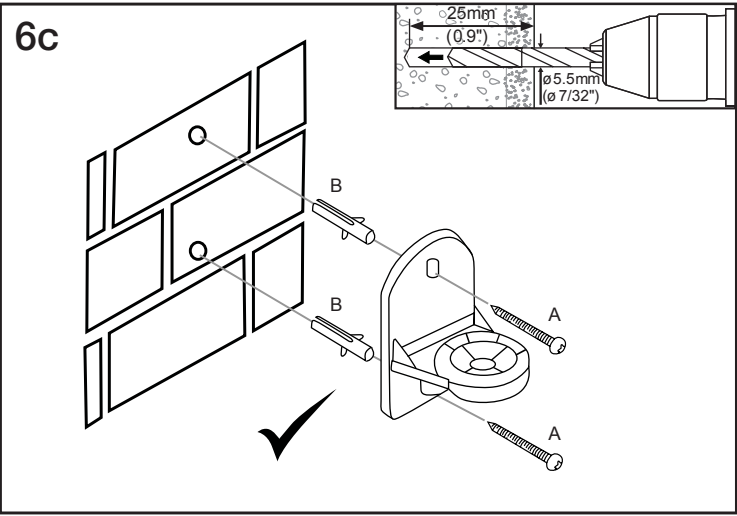
Each Speaker Wall Mount supports the following weights:

*SUPPORTS MAX 7KG

For speakers measuring less than 11cm in depth

SUPPORTS MAX 3.5KG

For speakers measuring more than 11cm in depth



BRBSB
TILT & SWIVEL Universal
SPEAKER
WALL MOUNTS

INCLUDES 2 MOUNTS

7kg* MAX
TV WEIGHT

The maximum supported weight is up to 7kg*

Each Speaker Wall Mount supports the following weights:

*SUPPORTS MAX 7kg

For speakers measuring less than 11cm in depth

SUPPORTS MAX 3.5kg

For speakers measuring more than 11cm in depth



SAFETY FIRST

- 1. Installation of this Speaker Wall Mount will be easier with two people.
- 2. Some images in this guide may vary slightly from the actual components supplied.
- 3. Ensure this instruction manual is completely read and understood before attempting installation.
- 4. This Speaker Wall Mount MUST NOT be installed solely in plasterboard, fibre cement and similar surfaces.
- 5. This Speaker Wall Mount MUST be installed in sound supporting structures such as those made of timber, steel or masonry using appropriate fasteners.
- 6. The supporting structure must be capable of sustaining the combined weight of the Speaker Wall Mount and the display otherwise the structure must be reinforced.
- 7. The fasteners supplied in this hardware pack allow for fixing into timber and masonry only. If installing into a supporting structure made of steel, appropriate fasteners must be used and sourced from an appropriate supplier.
- 8. Use appropriate tools and safety equipment and ensure adequate ventilation during installation.
- 9. If uncertain about any aspect of installation, contact The Crest Company or an installation professional.
- 10. Please retain these instructions for future reference.

Hardware Kit Contents

ITEM	DESCRIPTION	QTY	ITEM	DESCRIPTION	QTY
A	25mm Woodscrew	4	F	17mm Woodscrew	2
B	Concrete Anchor	4	G	M5 Washer	2
C	Keyhole Fixing Bolt	2	H	Keyhole Fixing Knob	2
D	M5 x 12mm Bolt	2			
E	M6 x 12mm Bolt	2			

Tools Required

DRYWALL INSTALLATION (TIMBER SUPPORTS):

- Adjustable spanner/socket set
- Philips head screwdriver
- Power drill
- High speed 3mm drill bit
- Stud finder
- Spirit level and pencil

MASONRY INSTALLATION:

- Adjustable spanner/socket set
- Philips head screwdriver
- Power drill with hammer function
- 5.5mm Masonry drill bit
- Spirit level and pencil
- Hammer

5 YEAR WARRANTY

Olbertz Holdings Pty Ltd ACN 010 003 933 trading as The Crest Company of 165 South Pine Road, Brendale, Queensland, 4500, Ph: 1800 812 261, www.crest.com.au, warrants that if this Crest product purchased by you from The Crest Company or a retail outlet is found by The Crest Company to be defective in workmanship or materials within 5 years of the date of purchase, The Crest Company will (at its election) either repair that product, replace the product, supply an equivalent product or pay the costs of repairing or replacing the product or acquiring an equivalent product.

This limited warranty will not extend to or cover any expenses associated with removing, dismantling the original product or installing the repaired, replaced or equivalent product or all or any of its components, you must bear these expenses. It also does not cover damage or loss resulting from intentional or unintentional misuse of, tampering with, alterations to or incorrect installation of this product or use of this product for purposes other than that for which it is designed or in a manner inconsistent with the product's instructions. This limited warranty also does not apply to damage or loss resulting from fair wear and tear or events beyond The Crest Company control including but not limited to natural disasters.

In order to claim under this warranty, you must contact The Crest Company and return to The Crest Company (via our nominated reply paid address) the product and its components and proof of purchase (including the date and location of purchase) so that The Crest Company can verify the defect and your purchase.

Our goods come with guarantees that cannot be excluded under the Australian Consumer Law. You are entitled to a replacement or refund for a major failure and compensation for any other reasonably foreseeable loss or damage. You are also entitled to have the goods repaired or replaced if the goods fail to be of acceptable quality and the failure does not amount to a major failure. The benefits given by this warranty are in addition to other rights and remedies which you may have under a law in relation to the goods or services to which the warranty relates.

Proudly brought to you by:



PO Box 5658 Brendale
QLD Australia 4500

Customer Support
1800 812 261
www.crest.com.au

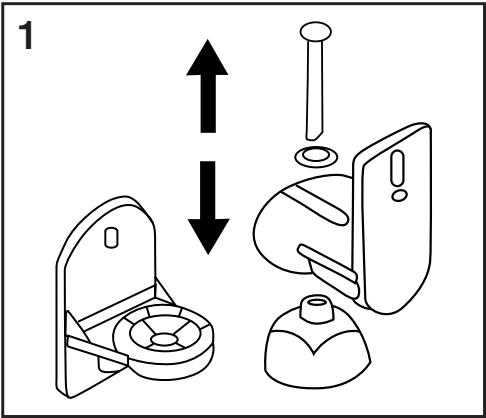
AUSTRALIAN OWNED

1660/2



Step 1: Disassemble the Speaker Wall Mounts

Remove the 2 speaker Wall Mounts from the box and disassemble the mounts by unscrewing the main screw holding the unit together and pull apart. This will make it easier to attach the wall plates to the wall.

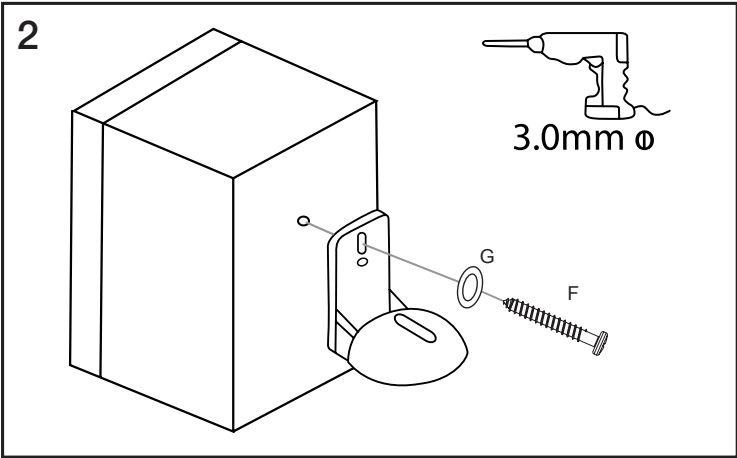


Step 2: Attach the Speaker Plate to back of Speaker

A. SCREW FIXING THE SPEAKER PLATE TO YOUR SPEAKER

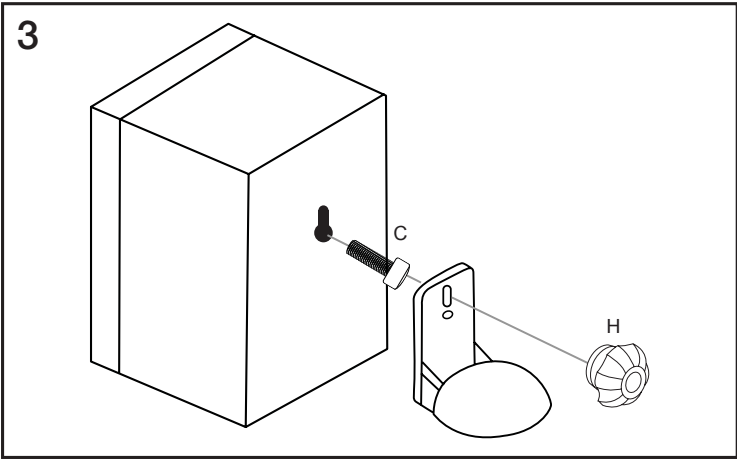
1. If your speakers do not have any pre-cut inserts for mounting on the back of the speaker you will need to drill into the back of your speaker to mount the speaker Wall Plates.
2. Position the speaker plate to the back of the speaker (about 1/3 of the way down from the top of the speaker).
3. Mark a drill hole position on the speaker then remove the speaker plate.
4. Carefully drill a 3mm hole into the speaker ensuring you do not drill too far into the speaker.
CAUTION: Be careful not to drill all the way through the cabinet and into the components inside.
5. Place the speaker plate over the drill hole and screw in a 17mm woodscrew (F) through a washer (G) and into the speaker. Do not over tighten.

The Crest Company is not responsible for any damage caused by drilling into the speaker.



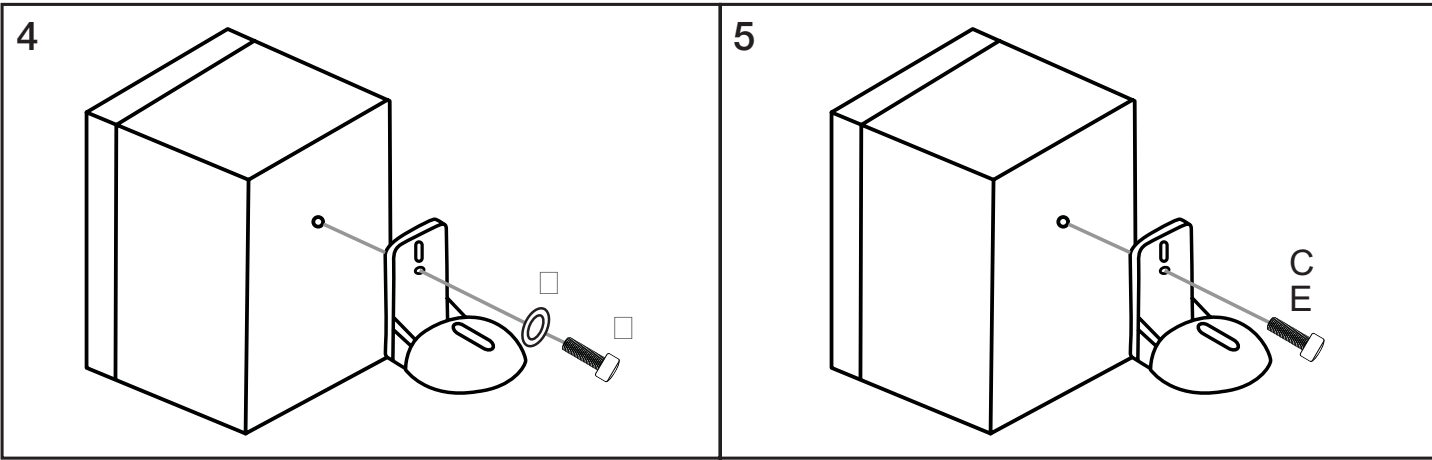
B. KEYHOLE FIXING THE SPEAKER PLATE TO YOUR SPEAKER

1. If your speakers have a keyhole slot on the back you will be able to fix your speaker plate without drilling into your speaker.
2. Insert the keyhole fixing bolt (C) through the hole of the speaker plate (make sure the thread of the bolt faces out to the back of the speaker plate). Loosely tighten with keyhole fixing knob (H).
3. With the speaker plate attached, insert the head of the keyhole fixing bolt (C) into the keyhole slot and slide upwards to lock into place. You can now turn the keyhole fixing knob (H) to tighten the bolt into position.



C. KEYHOLE FIXING THE SPEAKER PLATE TO YOUR SPEAKER

1. If your speakers have a single threaded insert on the back you will be able to fix your speaker plate without drilling into your speaker.
2. Choose the correct bolt size (C, D or E) that easily screws into the insert on the back of your speaker and holds the speaker plate into position. If no bolts fit, you will need to go to your local hardware supplier to find the correct bolt size.
3. Once you have selected the bolt (D), insert the bolt through a washer (G), into the speaker plate hole and then into the back of the speaker single threaded insert. Do not over tighten.



Step 3: Attach Wall Plate to Wall

A. INSTALLING IN DRYWALL (TIMBER SUPPORTS)

1. Locate centre of timber stud using a stud finder
(NOTE: You must use the centre of the stud to avoid cracking or splitting timber during installation. If you mount your speakers into the drywall and not through a timber support, the speaker mounts will not hold securely on wall).
2. Mark 2 fixing holes over stud centres using the speaker wall plate as a guide. Ensure wall plate is straight and level.
3. Pre-drill holes to a depth of 25mm using a high speed 3mm drill bit. If installing in hardwood, larger diameter and deeper holes may be required.
4. Attach the wall plate using the 25mm woodscrews (A). Do not over tighten.
The Crest Company is not responsible for any damage that may be caused by incorrect installation.

B. INSTALLING IN TIMBER POSTS

1. Locate centre of timber post and mark two fixing holes over the centre using the wall plate as a guide. Ensure wall plate is straight and level.
(NOTE: You must use the centre of the post to avoid cracking or splitting timber during installation).
2. Pre-drill holes to a depth of 25mm using a high speed 3mm drill bit. If installing in hardwood, larger diameter and deeper holes may be required.
3. Attach the wall plate using the 25mm woodscrews (A). Do not over tighten.
The Crest Company is not responsible for any damage that may be caused by incorrect installation.

