



3 Tall Pines LLC

Sample 473-032723-096

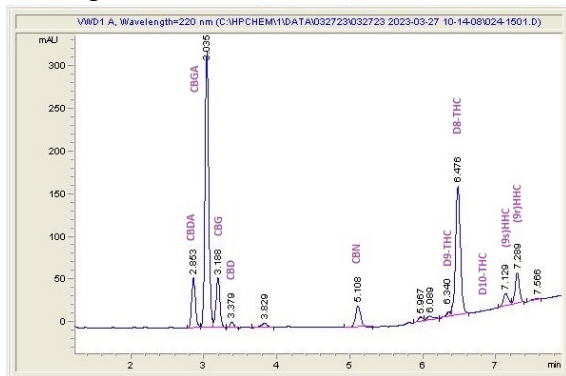
Maui Wowie Blunt

Sample Submitted: 03-27-2023; Report Date: 03-31-2023

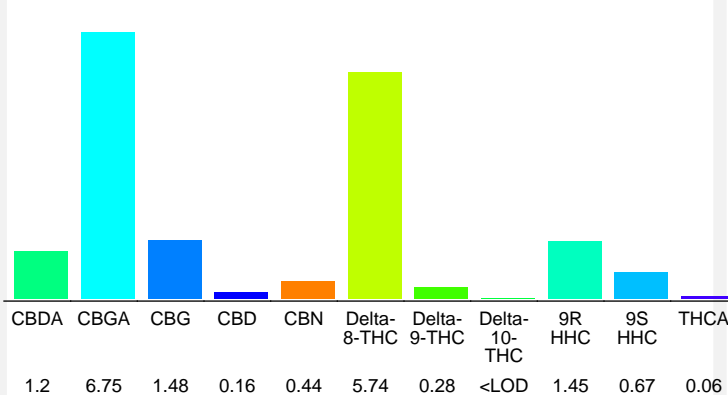
Maui Wowie Blunt

Plant Material

Chromatogram



Cannabinoid Profile



Cannabinoid Profile by HPLC

0.28%
Delta-9-THC

0.16%
CBD

18.23%
Total Cannabinoids

Cannabinoid	% wt	mg/g
CBDA	1.2	12.0
CBGA	6.75	67.5
CBG	1.48	14.8
CBD	0.16	1.6
CBN	0.44	4.4
Delta-8-THC	5.74	57.4
Delta-9-THC	0.28	2.8
Delta-10-THC	<LOD	<LOD
9R HHC	1.45	14.5
9S HHC	0.67	6.7
THCA	0.06	0.6

Total Cannabinoids	18.23	182.3
Calculated Delta-9-THC Yield	0.33	3.33
Calculated CBD Yield	1.21	12.12

Calculated Maximum Delta-9-THC Yield = Delta-9-THC + 0.877 * THCA

Calculated Maximum CBD Yield = CBD + 0.877 * CBDA

Notes: D10-THC expected at 6.919m. D10-THC is below the lower limits of detection (<0.01%)

This sample has been tested by Marin Analytics, LLC using valid testing methodologies and a quality system. Values reported relate only to the sample tested. Marin Analytics, LLC makes no claims as to the efficacy, safety or other risks associated with any detected or non-detected levels of any compounds reported herein. This Certificate shall not be reproduced except in full, without the written approval of Marin Analytics, LLC. Copyright 2022 Marin Analytics, LLC All Rights Reserved.