



### 3 Tall Pines LLC

W6326 County Rd Z  
Plymouth, WI 53073  
shop@3tallpinesfarm.com  
(715)202 3079

## Sample 652-110223-017

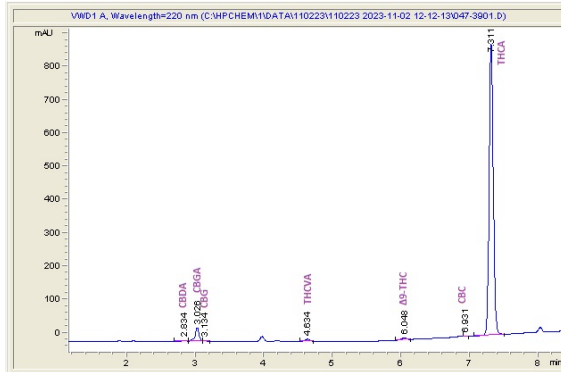
### Black Cherry

Sample Submitted: 11-02-2023; Report Date: 11-08-2023

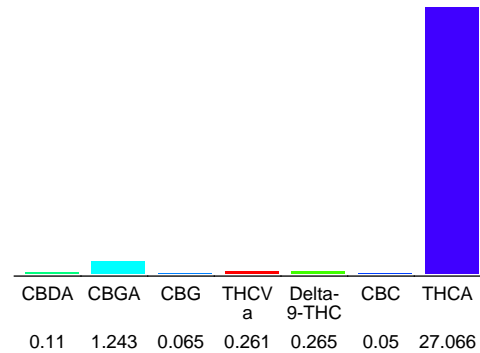
## Black Cherry

Plant Material: Hemp Flower

### Chromatogram



### Cannabinoid Profile



### Cannabinoid Profile by HPLC

**0.27%**

Delta-9-THC

**0.00%**

CBD

**29.06%**

Total Cannabinoids

Cannabinoid	% wt	mg/g
CBDA	0.11	1.1
CBGA	1.243	12.43
CBG	0.065	0.65
THCVa	0.261	2.61
Delta-9-THC	0.265	2.65
CBC	0.05	0.5
THCA	27.07	270.66
<b>Total Cannabinoids</b>	<b>29.06</b>	<b>290.6</b>
<b>Calculated Total THC</b>	<b>24.00</b>	<b>240.02</b>
<b>Calculated CBD Yield</b>	<b>0.10</b>	<b>0.96</b>

Calculated Total THC = Delta-9-THC + 0.877 \* THCA

Calculated Maximum CBD Yield = CBD + 0.877 \* CBDA

### Marin Analytics, LLC

250 Bel Marin Keys Blvd, Suite D4  
Novato, CA 94949

833-321-TEST / info@marinanalytics.com

**Mike Clemmons**  
Lab Manager