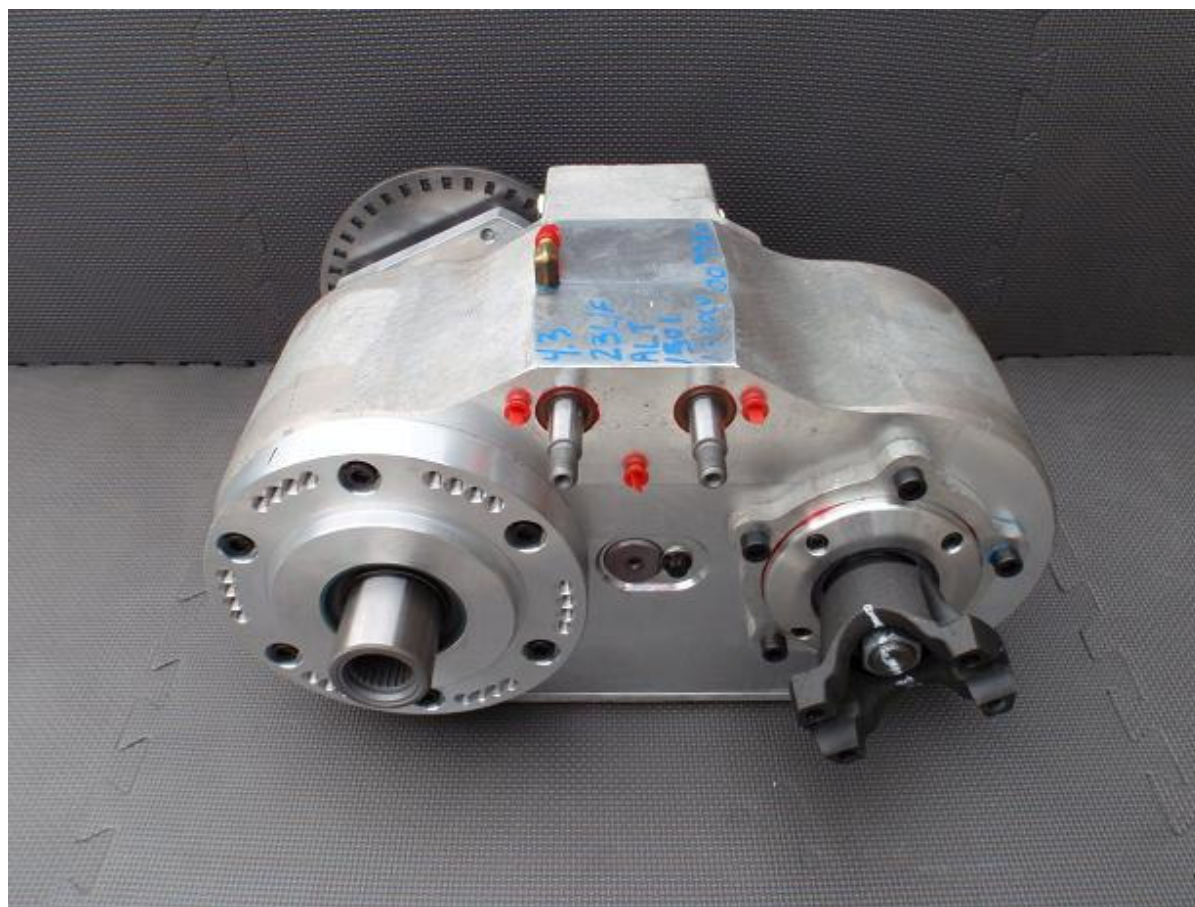


Installation Manual for your NWF BlackBox-I to Atlas II



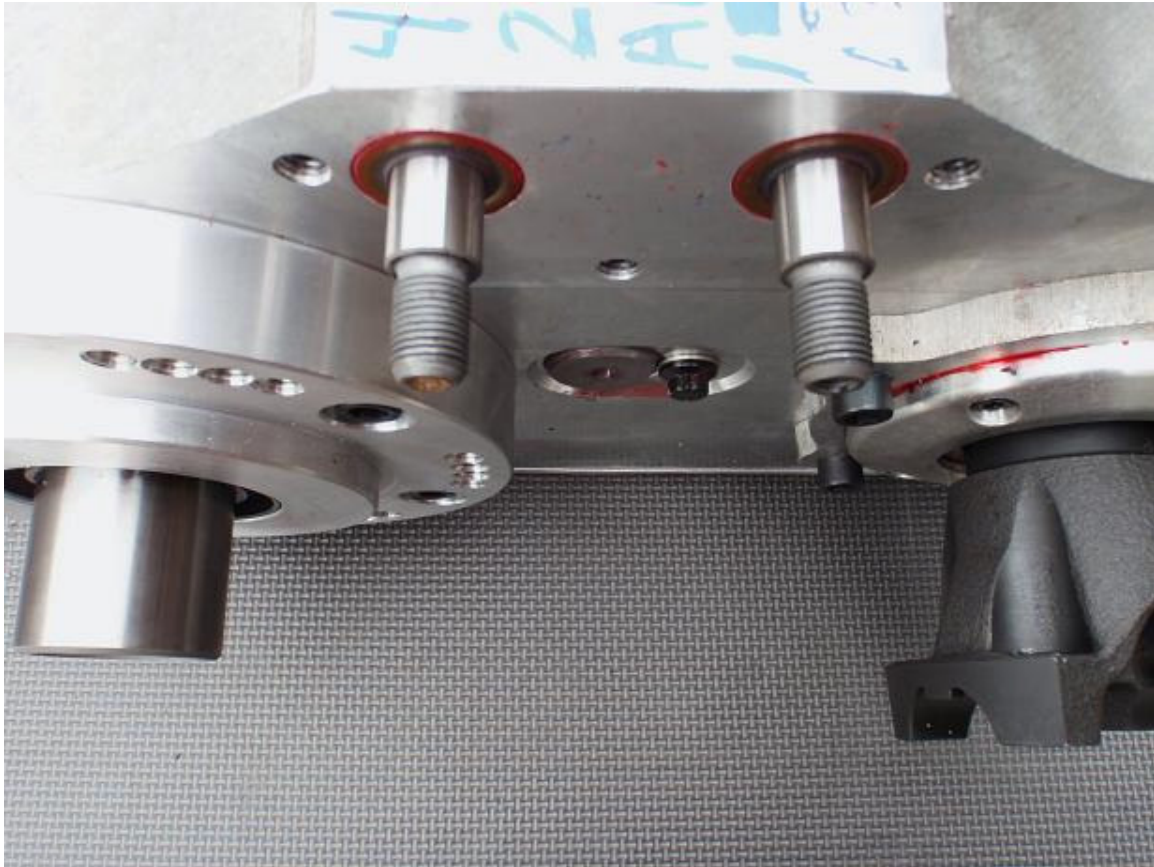
First we are going to prepare the Atlas for the BlackBox-i



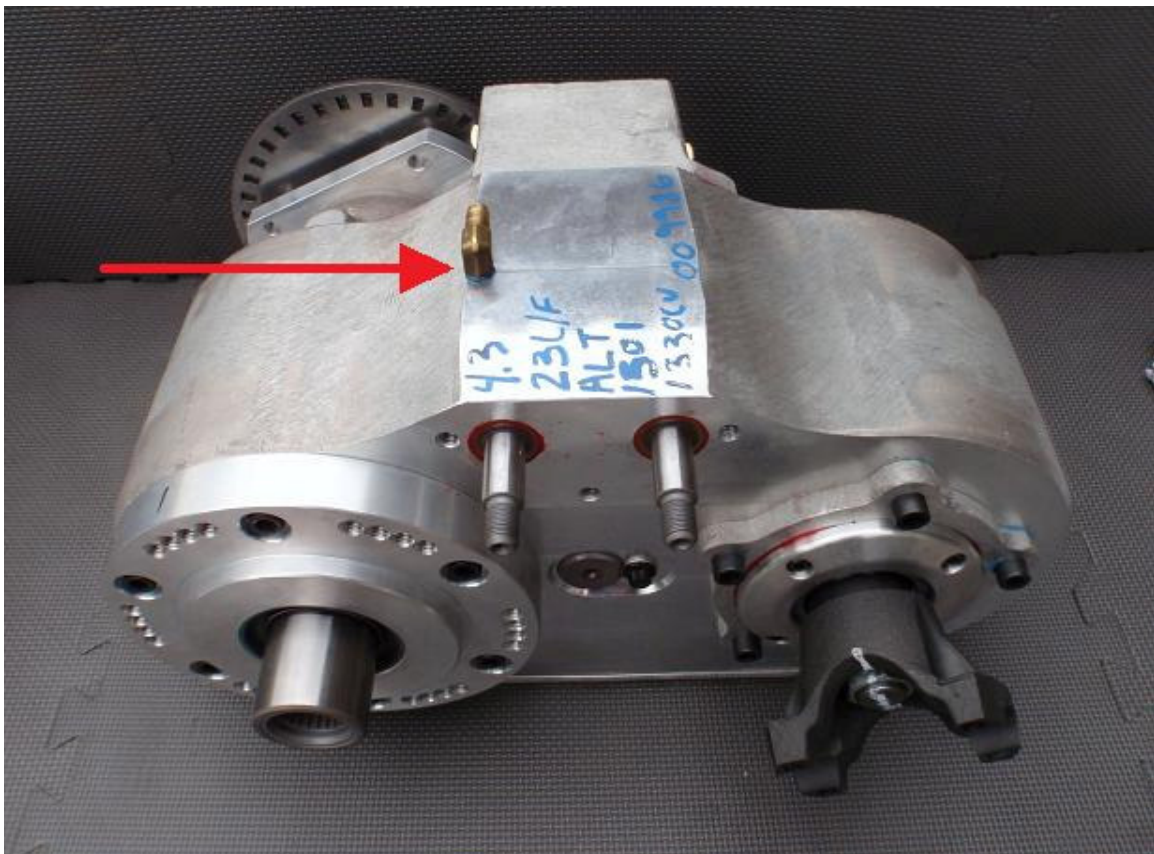
Read through all the pages of the instructions before beginning.

Step 1:

Shift the Atlas into 4wd low (shift rails all the way into the case)



Remove the brass elbow on the top of the case.

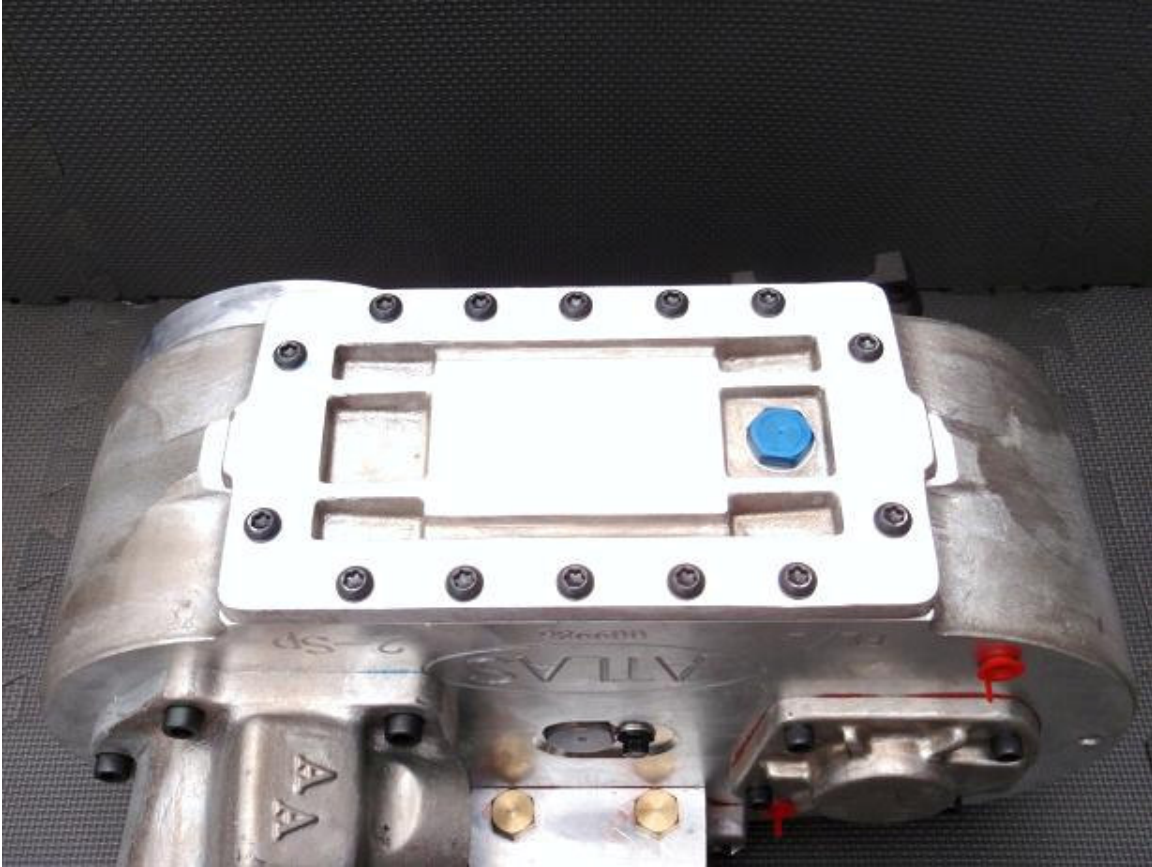


Step 2:

Drain all fluid from the Atlas Case by removing the drain plug on inspection cover. Dispose of fluids correctly.

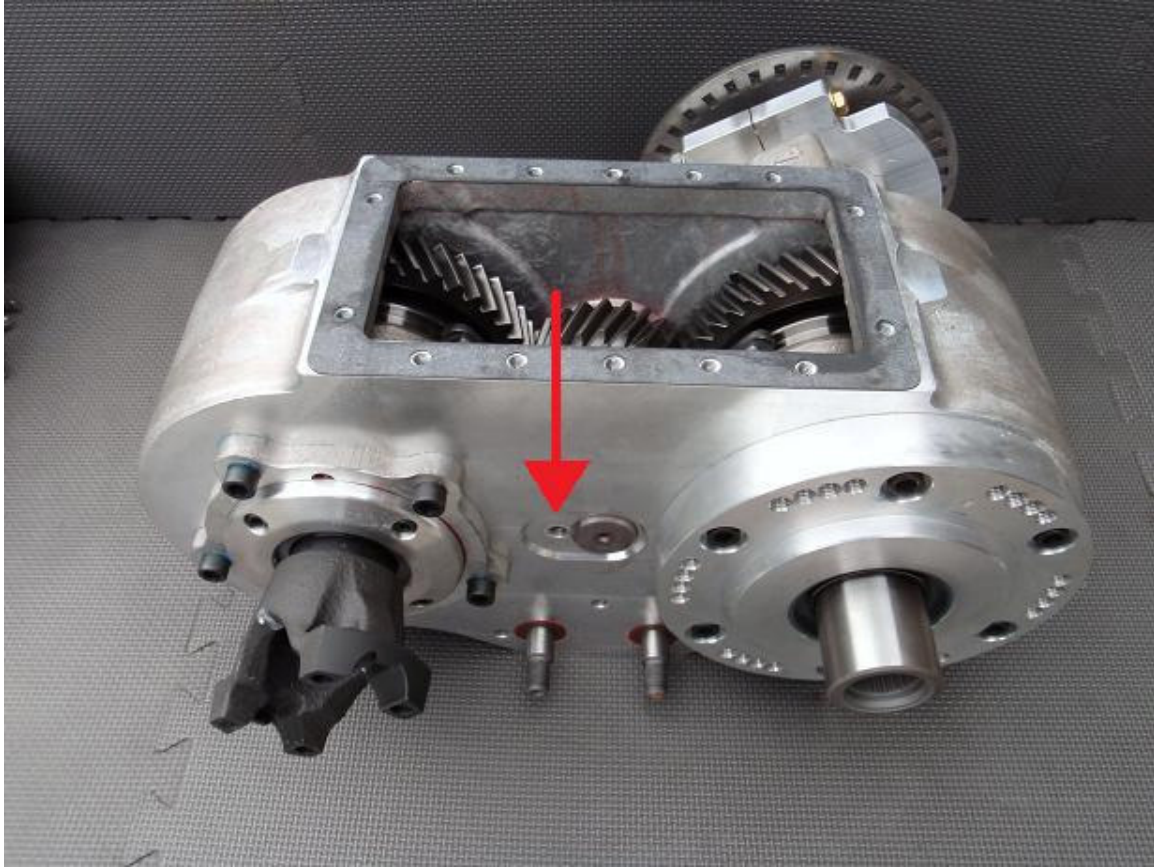
Step 3:

Place the Atlas 'bottom up' on your CLEAN workbench and remove the 14 Torx bolts that secure the access cover in place. Use the pry points to remove the access cover and set both hardware and cover aside for later steps.



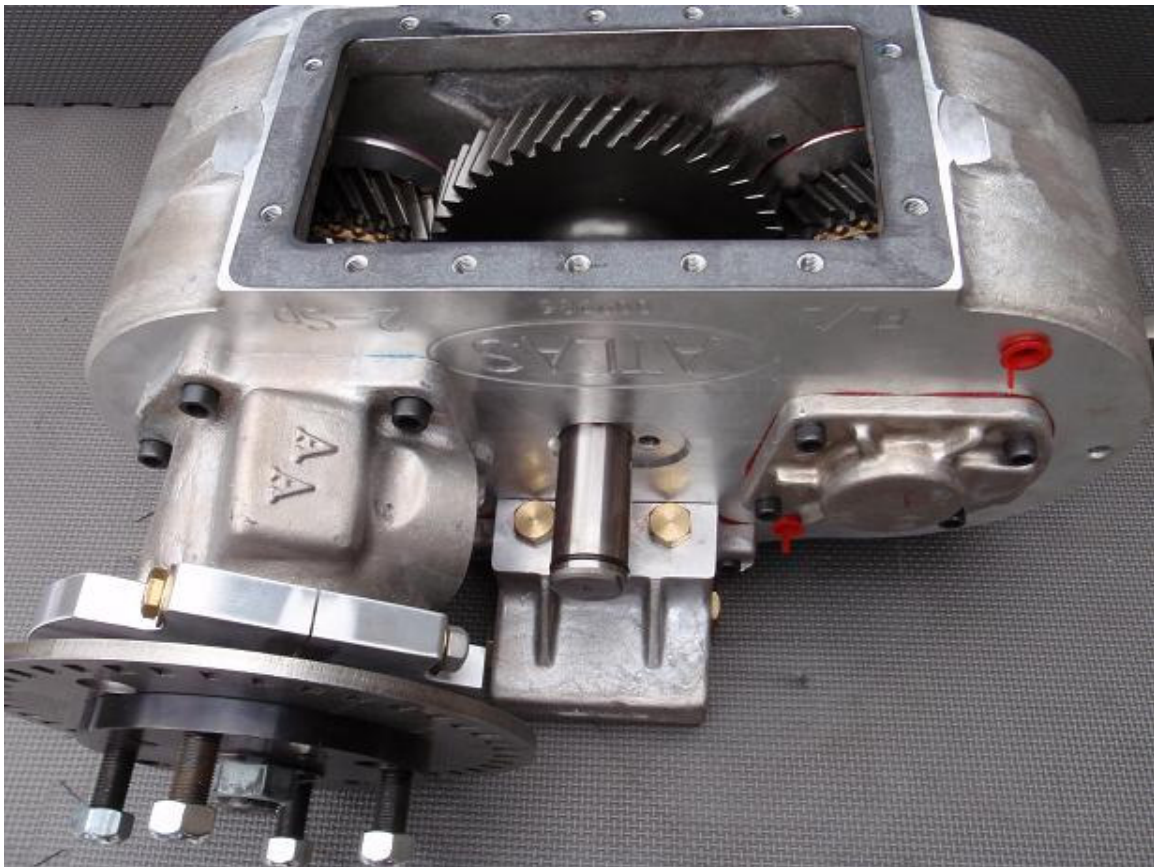
Step 4:

Remove the (2) Cluster Pin bolts using a 12 point 3/8" Socket. These are located on both the input and output side of the case.



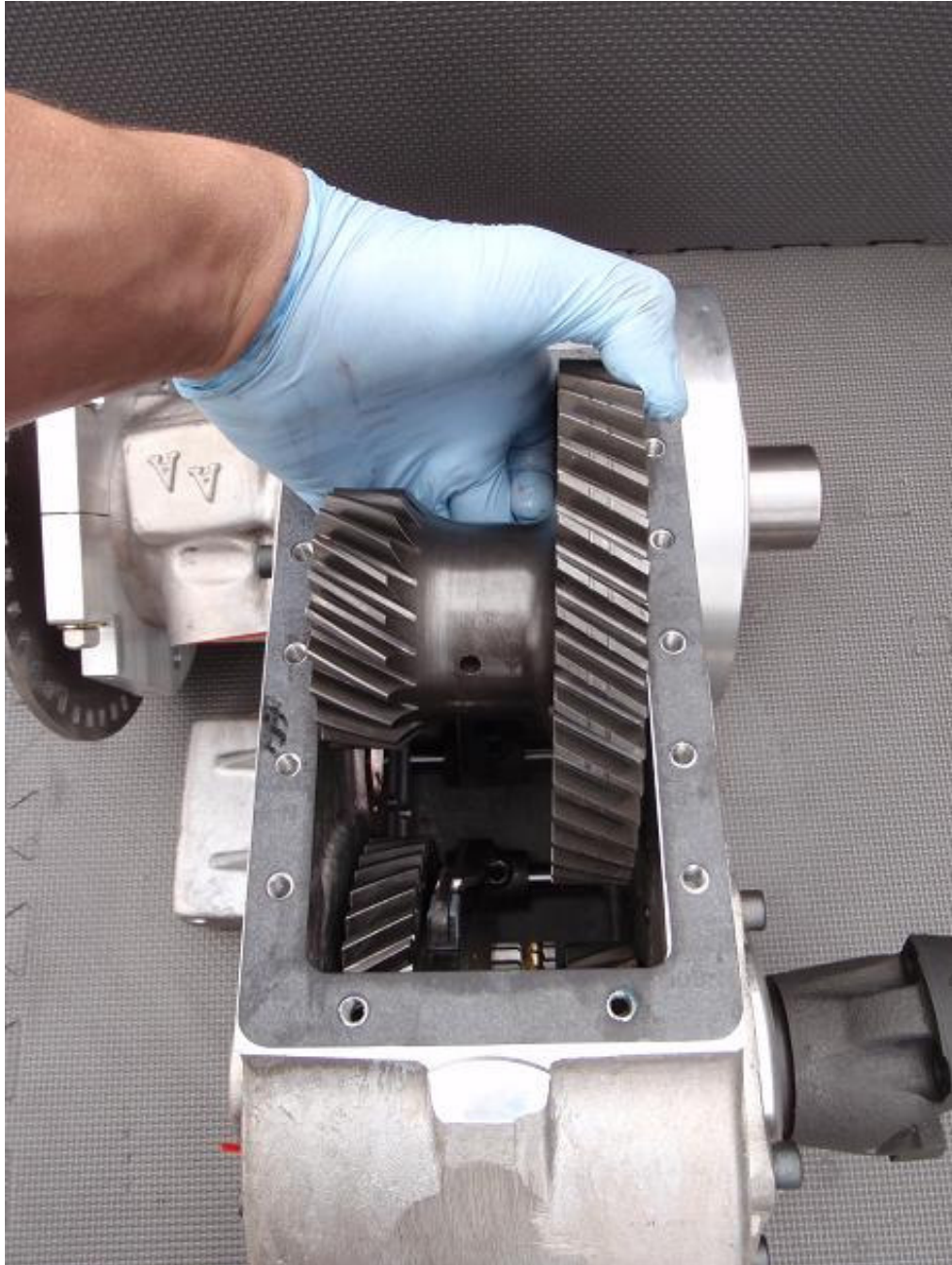
Step 5:

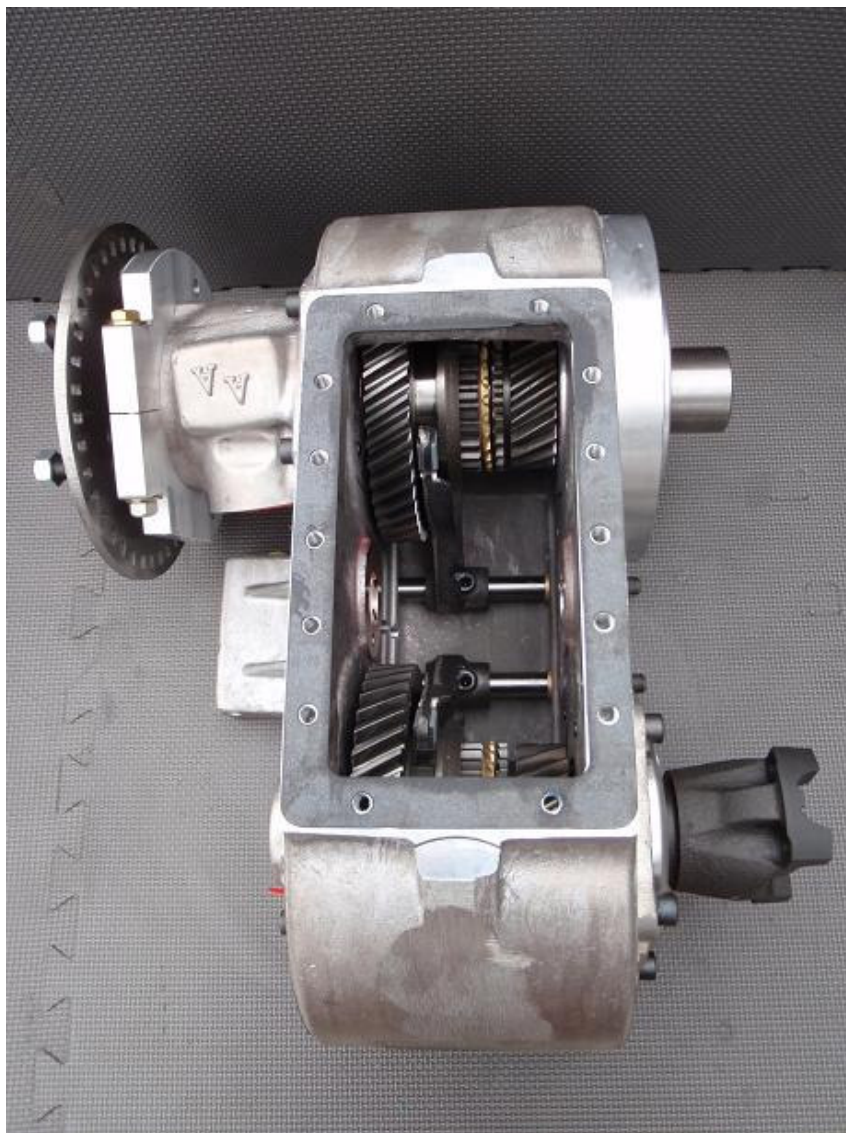
Remove the Cluster Pin by applying pressure from the input side of the case. As you slide the pin through, support the cluster gear with your hand.



Step 6:

Remove the cluster gear from the case. There are needle bearings inside the cluster gear - take care not to lose these. Place the cluster gear aside in a CLEAN area where it will not be exposed to abrasives.





Now remove the (2) thrust washers that fit between the cluster gear and case. Place these to the side as well as they will be re-used.



Step 7:

With the cluster gear assembly out of the case, we can now remove the (6) Socket Cap Screws that retain the Atlas 'clocking ring' in place.



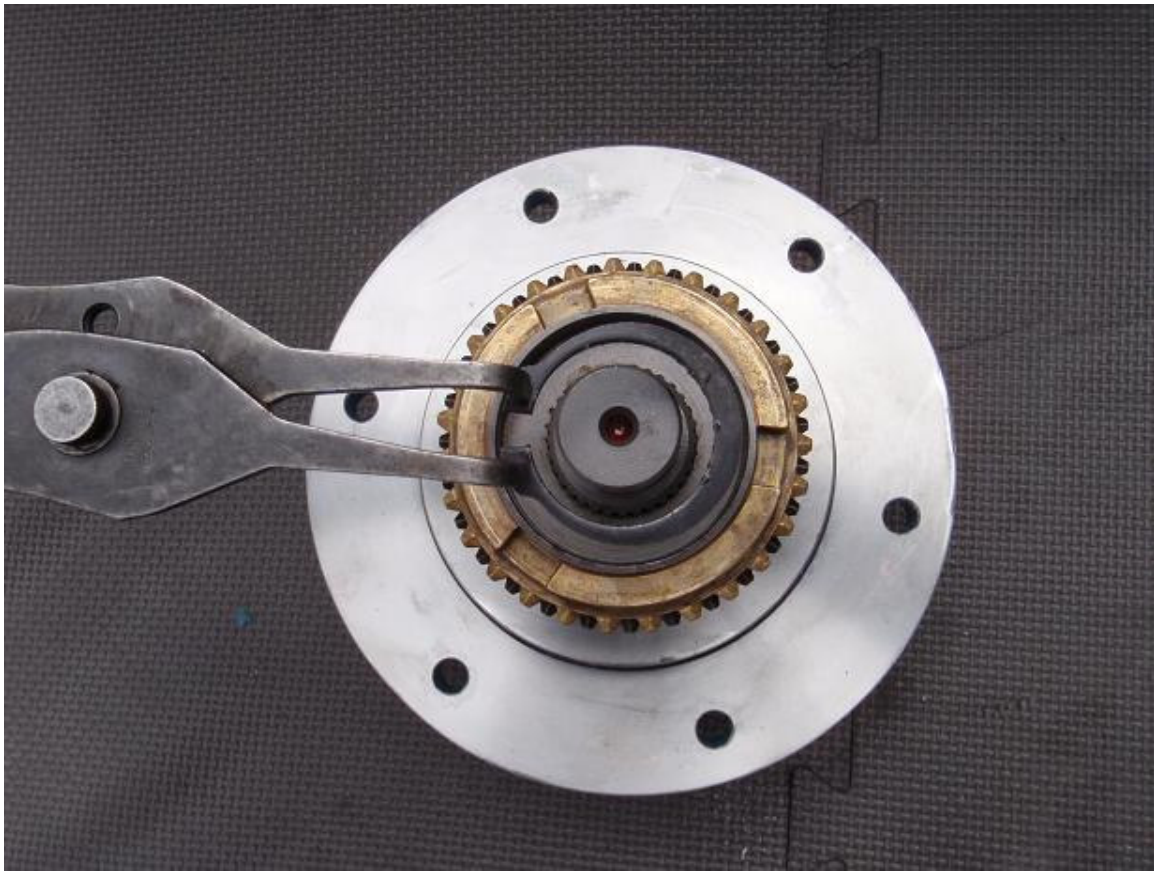
Step 8:

Unseat the clocking ring from the Atlas. This can be accomplished by hitting the clocking ring with a rubber mallet. Pry the Clocking Ring from the case and remove the clocking ring assembly (which will be accompanied by the input shaft and input gear).

Great! You Are Done the Disassembly Of The Atlas II

Step 9:

Position the clocking ring so the input gear is facing you. Using a GOOD pair of snap ring pliers, remove the Atlas input gear snap ring.



Step 10:

Remove the input gear which seats on the input shaft. Set the gear and gold syncro aside for re-assembly.



Step 11:

Un-pack your NWF BlackBox-i shipment. You will find your BlackBox-i pre-assembled as one unit. Looking at the input side of the case (which looks like the clocking ring) remove the 6 Allen keys that hold the unit together.

The case may separate into 2 pieces at this point. If it does not, using a 3/16" Allen Key, turn the 3 socket set screws clockwise, which are sunk into the input side of the BlackBox-i. After they separate, turn the Allen Key counterclockwise all until the socket set screw seats back in the BlackBox-i lid.



Step 12:

Position the BlackBox-i output towards you as shown. Install the Atlas input gear and (removed in step 10) on the BlackBox-i.



Step 13:

Install the supplied snap ring onto the BlackBox-i shaft - securing the Atlas input gear.



Step 14:

Slide the large o-ring over the output flange of the BlackBox-i, and apply a thin ring of gasket sealer compound around o-ring and backside of the BlackBox. Place the Gold Syncro on-top of the input gear as shown.

