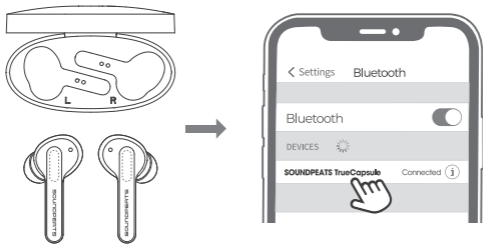


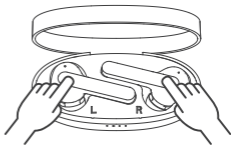
Pairing



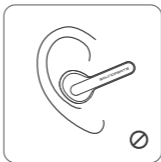
1. Take both earbuds out of the charging case, the left and right earbuds will enter the pairing mode. After this, the indicator of the secondary earbud will light up in white, and the indicator of the main earbud flashes in red and white alternately.
2. Activate the Bluetooth on your device and hit "SOUNDPEATS TrueCapsule" on the bluetooth list to connect.

Factory Reset

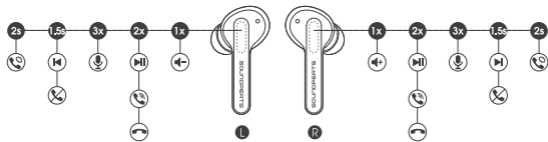
1. Clear the pairing record between the earbuds and all your devices.
2. Place back both earbuds into the charging case and make sure they are in charging status. Press and hold both MFBs for 10 seconds until both indicators flash in white twice indicating reset successfully.



Wearing



Product Diagram



Button Control

Power On	Auto: Take out the earbuds from the charging case Manually: Press and hold the MFB for 1.5s
Power Off	Auto: Place back the earbuds into charging case Manually: Press and hold the MFB for 10s
Play / Pause	Double tap the MFB
Volume -	Single tap the left MFB
Volume +	Single tap the right MFB
Previous Track	Press and hold left MFB for 1.5s
Next Track	Press and hold right MFB for 1.5s
Answer / Hang Up Phone Call	Double tap the MFB
Reject Phone Call	Press and hold the MFB for 1.5s
Switch Between Two Calls	Press and hold the MFB for 2s
Manually Enter Pairing Mode	Press and hold the MFB for 6s
Activate Voice Assistant	Triple tap MFB of the earbuds

Q1: What do the charging LEDs tell while charging the case?

- Charging case power: 0-24%, The first white indicator flashes
- Charging case power: 25-49%, The second white indicator flashes and the first one stays on
- Charging case power: 50-74%, The third indicator flashes and the first two stays on
- Charging case power: 75-99%, The fourth indicator flashes and the first three stays on
- Charging case power: 100%, All four indicators stay on



+	+	○	○	○	< 24%
•	+	○	○		25% - 49%
•	•	+	○		50% - 74%
•	•	•	+		75% - 99%
•	•	•	•		100%

Q2: Why are the earbuds still connected to my phone after placing back?

1. The charging case is out of battery. The case will not turn off the earbuds if the case battery is dead.
2. Please make sure the earbuds sit well in the charging case, and the charging contactors on both the earbuds and the pin needle are clean. If not, please try something like microfiber cloth to clean the contactors.

Q3: The battery life is not as advertised?

A single charge will not give you 24 hours playtime constantly. The earbuds work around 4 hours per charge with average use. The charging case provides another 5 recharges.

FCC Statement

This equipment has been tested and found to comply with the limits for a Class B digital device, pursuant to Part 15 of the FCC rules. These limits are designed to provide reasonable protection against harmful interference in a residential installation. This equipment generates uses and can radiate radio frequency energy and, if not installed and used in accordance with the instructions, may cause harmful interference to radio communications. However, there is no guarantee that interference will not occur in a particular installation. If this equipment does cause harmful interference to radio or television reception, which can be determined by turning the equipment off and on, the user is encouraged to try to correct the interference by one or more of the following measures:

- Reorient or relocate the receiving antenna.
- Increase the separation between the equipment and receiver.
- Connect the equipment into an outlet on a circuit different from that to which the receiver is connected.
- Consult the dealer or an experienced radio/TV technician for help.

This device complies with part 15 of the FCC rules. Operation is subject to the following two conditions:

- (1) This device may not cause harmful interference.
- (2) This device must accept any interference received, including interference that may cause undesired operation.

Changes or modifications not expressly approved by the party responsible for compliance could void the user's authority to operate the equipment.