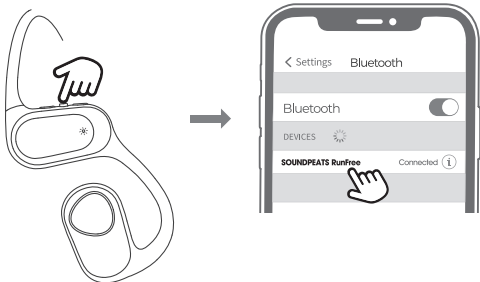


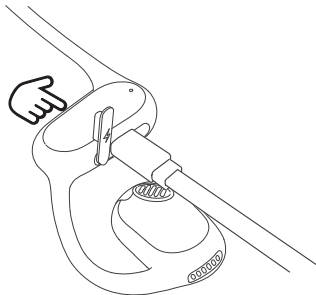
Pairing



1. Press and hold the power button for 3 seconds to turn on the RunFree headset. The headset will enter pairing mode once the solid white light begins flashing red and white.
2. Activate Bluetooth on your device, and choose "SOUNDPEATS RunFree" from the Bluetooth List to pair.

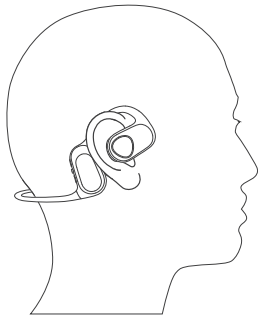
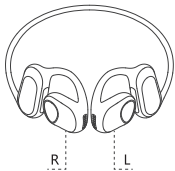
Reset

1. Plug in the headset so that it is in charging status.
2. Press and hold the power button for 3 seconds. The light will flash red and white twice, indicating that the headset has been restored to factory settings.
3. Unplug the charging cable and turn on the headset. The reset is complete.



Wearing

1. Identify the left and right and wear accordingly.
2. Rotate the headset to find the most comfortable fit.



Button Controls

Power On	Manually: Press and hold the power button for 3s
Power Off	Auto: Automatically turns off after 3 minutes of disconnection Manually: Press and hold the power button for 3s
Play / Pause	Press the power button
Volume-	Press the volume- button
Volume+	Press the volume+ button
Previous Track	Press and hold the volume- button
Next Track	Press and hold the volume+ button
Enter / Exit Game Mode	Triple tap the power button
Answer / Hang Up Phone Call	Press the power button
Reject Phone Call	Press and hold the power button for 1.5s
Switch Between Two Calls	Double press the power button
Activate Voice Assistant	Double press the power button

Q&A**Q1: How to charge the headset?**

Use a Type-C adaptor to charge the headset (current not over 1A).

Note - Please charge the headset at least once every three months when not in use for a long time.

Q2: How to disconnect the headset from the phone?

1.Press and hold both volume buttons simultaneously for 3s.

(This will not work while playing music or during a phone call)

2.Turn off Bluetooth on the phone.

Q3: How to connect with two devices at the same time?

1.Turn on the headset and connect it to Device A.

2.Disconnect from Device A and enter pairing mode.

3.Connect the headset to Device B.

4.Reconnect the headset to Device A.

The RunFree headset will now automatically connect with both devices simultaneously.