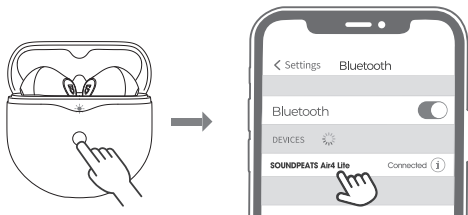


First Time of Use



1. Open the lid of the charging case, press and hold the button on the charging case for 3 seconds until the indicator light on the charging case flashes white. At this point, they enter into pairing mode.
2. Turn on your device's Bluetooth and select SOUNDPEATS Air4 Lite from the Bluetooth list to complete the pairing.

Multi-point Connection

SOUNDPEATS Air4 Lite earphones can be paired simultaneously with two devices.

How to connect: Once the earphones are paired with device A, turn off the Bluetooth of device A. Repeat the pairing operation to connect the earphones to device B. When the pairing is completed, please turn on the Bluetooth of device A to complete the pairing.

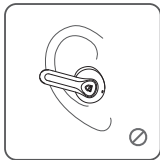
Reset

1. Place both earphones back into the charging case, and make sure they are correctly placed.
2. With the case lid open, press and hold the button of the charging case for 10S until the indicator light on the charging case flashes white twice.
3. Close the case lid and take out the earphones, and they are activated successfully.

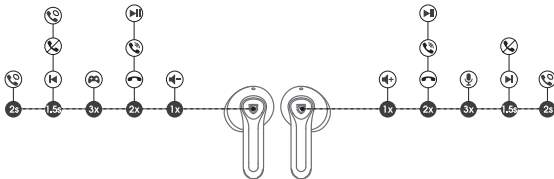


Wearing methods

1. Identify the left and right earphones.
2. Adjust the earphones to fit your ears.



Product Diagram



Controls

Power On	Auto: Open the charging case; the earphones turn on automatically Manually: Press and hold the multifunctional button for 1.5s, with earphones off
Power off	Auto: Place the earphones back into the charging case and close the case lid Manually: Press and hold the multifunctional button for 10s, with earphones on
Play/Pause	Double-tap on the multifunctional button
Volume-	Single-tap on the left multifunctional button
Volume+	Single-tap on the right multifunctional button
Previous Track	Press and hold the left multifunctional button for 1.5s
Next Track	Press and hold the right multifunctional button for 1.5s
Answer/Hang Up a Phone Call	Double-tap on the multifunctional button
Reject a Phone Call	Press and hold the multifunctional button for 1.5s
Switch Between Two Active Calls	Press and hold the multifunctional button for 2s
Manual Pairing	Press and hold the button of the charging case for 3s
Activate/Deactivate the Voice Assistant	Press the right multifunctional button for three times
Activate/Deactivate the Game Mode	Press the left multifunctional button for three times

Q1: What does the indicator light of the charging case display?

1. The battery life of the charging case:

100%—50%	Green
49%-10%	Yellow
<10%	Red

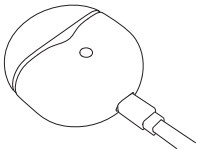
2. 2) Charging status of the charging case:

<20%	The Red light flashes slowly
20%-69%	The Yellow light flashes slowly
70%-99%	The Green light flashes slowly
100%	The Green light stays on



Q2: How to charge the charging case?

1. Connect the charging case to a Type-C charger. (The current does not exceed 1A).
2. If the earphones stay idle for an extended period, charge them at least every three months to prevent the battery from being damaged.

**Q3: Why are the earphones still connected to the phone when they are put back to the charging case and the case lid is closed?**

1. Check whether the charging case has battery power. If it has run out of battery, closing it will not disconnect the earphones from the device.
2. Ensure the earphones are properly placed in the charging case and the charging metal sheet and PIN are clean. And wiping clean the contact points on the earphones and the charging case should fix this issue.