



Let the fun begin!

The Learning Tower Company
Website: learningtowers.co.uk
Contact: support@learningtowers.co.uk

Hi there!

Welcome to your new Montessori product... you've made a great choice!

Here at The Learning Tower Company, we specialise in Montessori furniture. We have used our years of experience to make this product as good as it can be, from the quality and value of the materials to the design and features.

We're working hard to make our packaging as eco-friendly as we can, protecting the planet for the next generation whilst protecting the quality of your product. We also planted a tree on your behalf when you made this purchase; you can check out our company forest below!

Finally, we have tried to make your assembly process as straightforward as possible. Please approach the activity with a smile on your face and your child will soon be using their new product to develop their confidence, strength, balance and sense of adventure!

With love from, **The Learning Tower Company**

One more thing... just like your family, our little company thrives on positive feedback and social interaction, so we'd be eternally grateful if you'd leave us a review and share any pictures you feel comfortable sharing with us on social media...

Simply hover the camera of your smartphone over the QR Codes below and click on the link that appears to navigate straight to your desired location!

Our Company Forest



Further Assembly Instructions



Leave a Review! Please :)



Facebook



Instagram



Pinterest



Before you get started...

Flatpack furniture.... you either love it or you hate it!

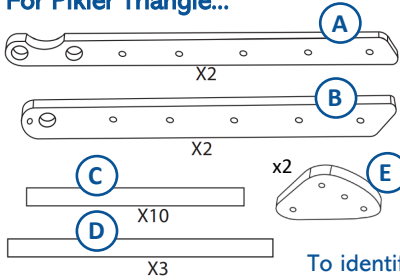
Please approach this activity with a smile on your face and if you have any issues, please get in touch on the details found in the top-right of the page. We're here for you! :)

General Guidance on Assembly

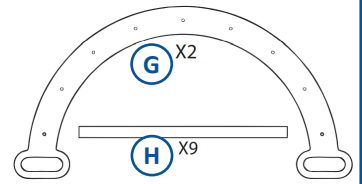
For each step in this process, we recommend first loosely locating the screws at about 50% tightness. Then when the whole item is assembled, aligned and straight, tighten the screws to 100% (being careful not to overtighten).

1. Check your parts are present and correct :

For Pikler Triangle...

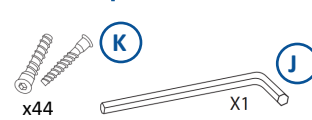


For Arch...

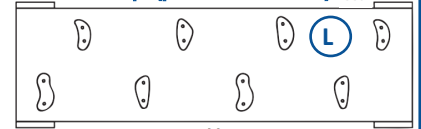


To identify between poles C, D & H, line them up in height order and count them.

For multiple...

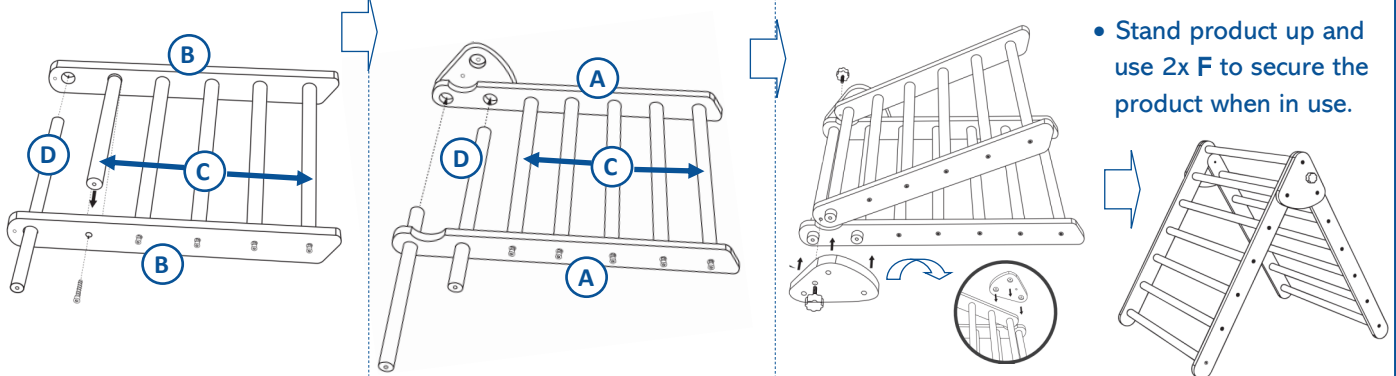


Ramp (pre-assembled) X1



2. Assemble the Pikler Triangle: You'll need: 2x A, 2x B, 10x C, 3x D, 2x E, 2x F, 26x K, +J.

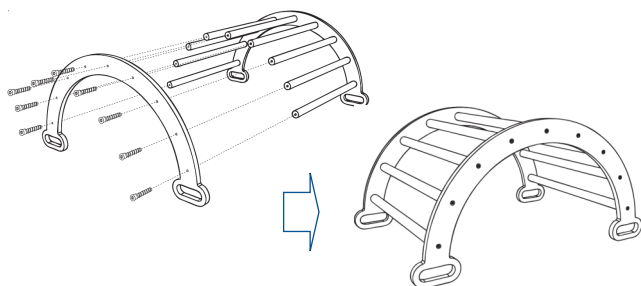
- Locate and secure 5x C with 10x K into 2x B as shown.
- Locate 1x D without screws.
- Locate and secure 5x C with 10x K into 2x A as shown.
- Locate 2x D without screws.
- Place assembled side B on top of side A.
- Locate 1x E on each side so that each of the 3x D slot into the recesses in E. Use 6x K to secure.
- Stand product up and use 2x F to secure the product when in use.



3. Assemble the Arch:

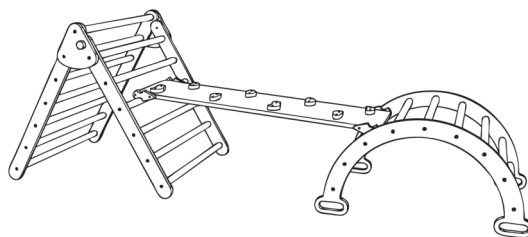
You'll need: 2x G, 9x H, 18x K, +J.

- Locate 9x H into 1x G and fix with 9x K.
- Repeat this process on the 2nd 1x G.



4. Finally...

Stand the items up, make sure that all parts are correctly seated, aligned and straight. Then tighten all screws securely (do not overtighten). If any of the feet are not sitting flush on the floor, then untighten all screws, realign and refasten screws.



Warnings: Pikler Triangles, arches and associated products are designed for young children to develop their balance, coordination and confidence in a safe and supervised environment. You should always supervise your child when in use. We highly recommend using on a soft (e.g. carpeted) floor. Ensure that all parts are correctly secured before use and that the ramp is correctly seated on triangle/arch rungs to prevent the ramp from slipping. Be careful of small components if assembling the tower in the presence of a child.