

# ***EXCEL***

## **Ø200mm Sharpener With Honing Wheel**



**MODEL:11792**

## **INSTRUCTION MANUAL**

**Exceltools.co.uk**

## 1. Introduction

### Dear Customer,

We hope your new tool brings you much enjoyment and success.

### Note:

According to the applicable product liability laws, the manufacturer of the device does not assume liability for damages to the product or damages caused by the product that occurs due to:

- Improper handling,
- Non-compliance of the operating instructions,
- Repairs by third parties, not by authorized service technicians,
- Installation and replacement of non-original spare parts,
- Application other than specified,

A breakdown of the electrical system that occurs due to the non-compliance of the electric regulations and regulations.

### We recommend:

Read through the complete text in the operating instructions before installing and commissioning the device. The operating instructions are intended to help the user to become familiar with the machine and take advantage of its application possibilities in accordance with the recommendations. The operating instructions contain important information on how to operate the machine safely, professionally and economically, how to avoid danger, costly repairs, reduce downtimes and how to increase reliability and service life of the machine.

In addition to the safety regulations in the operating instructions, you have to meet the applicable regulations that apply for the operation of the machine in your country. Keep the operating instructions package with the machine at all times and store it in a plastic cover to protect it from dirt and moisture. Read the instruction manual each time before operating the machine and

carefully follow its information. The machine can only be operated by persons who were instructed concerning

the operation of the machine and who are informed about the associated dangers. The minimum age requirement must be complied with.

## 2. Scope of delivery

- Open the packaging and remove the device carefully.
- Remove the packaging material as well as the packaging and transport bracing (if available).
- Check that the delivery is complete.
- Check the device and accessory parts for transport damage.
- If possible, store the packaging until the warranty period has expired.

### Attention

The device and packaging materials are not toys!

Children must not be

allowed to play with plastic bags, film and small parts!

There is a risk of swallowing and suffocation!

## 3. Proper use

The double-wheel grinder is a combination tool for the grinding and polishing of metals, plastics and other materials using the appropriate grinding wheels.

The machine meets the currently valid EU machine directive.

- The manufacturer's safety, operation and maintenance instructions as well as the technical data given in the calibrations and dimensions must be adhered to.
- Relevant accident prevention regulations and other generally recognized safety and technical rules must also be adhered to.
- The machine may only be used, maintained or repaired by trained persons who are familiar with the machine and have been informed about the dangers. Unauthorized modifications of the machine exclude a liability of the manufacturer for damages resulting from the modifications.

- The machine is intended for use only with original spare parts and original tools from the producer.
- The equipment is allowed to be used only for its prescribed purpose. Any other use is deemed to be a case of misuse. The user/operator and not the manufacturer will be liable for any damage or injuries of any kind resulting from such misuse.
- Please note that our equipment has not been designed.
- for use in commercial, trade or industrial applications. Our warranty will be voided if the equipment is used in commercial, trade or industrial businesses or for equivalent purposes.

#### **Residual risks**

The machine is allowed to be used only for its intended purpose! Even when the equipment is used as prescribed it is still impossible to eliminate certain residual risk factors. The following hazards may arise in connection with the machine's construction and layout:

- Contact with the grinding wheel where it is not covered.
- Catapulting of parts from out of damaged grinding wheels.
- Catapulting of workpieces and parts of workpieces.
- Damage to hearing if essential ear-muffs are not used.
- Lung damage if no suitable protective dust mask is used.
- Health damage caused by hand-arm vibrations if the equipment is used over a prolonged period or is not properly guided and maintained.
- The use of incorrect or damaged mains cables can lead to electrical injuries.
- Although having regarded all considerable rules there may still remain not obvious remaining hazards.
- Minimize remaining hazards by following the instructions in "Safety Rules", "Use only as authorized" and in the entire operating manual.

## **4. Safety instructions**

Caution! In order to protect yourself from the danger of electric shock, injury or fire when using electrical power tools, please observe the following basic safety precautions. Read all these requirements before you use the electrical power tool, and keep the safety advice in a safe place.

### **Working safely**

#### **1. Keep your working area clean and tidy.**

- A disorderly working area can lead to accidents.

#### **2. Be aware of the effects of the environment.**

- Do not leave electrical power tools out in the rain.

- Do not use electrical power tools in moist or wet surroundings.

- Ensure that your working area is well lit.

- Do not use electrical power tools in areas where there is risk of fire or explosion.

#### **3. Protect yourself from electric shock.**

- Avoid touching earthed objects such as pipes, heating radiators, ovens or refrigerators with parts of your body.

#### **4. Keep other people at a safe distance.**

- Do not allow other people, in particular children, to touch the electrical power tool or the mains lead. Keep them away from your working area.

#### **5. Store currently unused electrical power tools in a safe place.**

- When not being used electrical power tools should be stored in dry conditions in a high or enclosed place, out of reach of children.

#### **6. Do not overload your electrical power tool.**

- By keeping within the specified working range of the tool you will work more safely and achieve a better result.

#### **7. Use the right electrical power tool for the task.**

- Do not use low-output devices for heavy tasks.

- Do not use an electrical power tool for purposes for which it was not intended. For example, do not use a hand operated circular saw for trimming tree branches or cutting logs.

**8. Wear suitable clothing.**

- Do not wear loose-fitting clothing or jewellery. They could become caught on moving parts.
- We recommend that you wear anti-slip footwear when working outdoors.
- If you have long hair, wear a hair net.

**9. Use personal protective equipment.**

- Wear protective glasses.
- Wear a dust mask if your work generates dust.

**10. Attaching the vacuum dust extraction device.**

- Where there are connection points provided for vacuum dust extraction please ensure that the connections are made and used properly.

**11. Do not use the mains lead for purposes for which it was not intended.**

- Do not use the mains lead to pull the plug out of the mains socket. Protect the mains lead from heat, oil and sharp edges.

**12. Securely support the workpiece.**

- Use clamps or a vice to grip the workpiece firmly. This is much safer than holding it with your hand.

**13. Avoid placing your body in an unnatural position.**

- Keep proper footing and balance at all times.

**14. Look after your tools carefully.**

- Keep cutting tools sharp and clean. This way you will work more safely and achieve better results.
- Follow the advice on tool lubrication and consumables replacement.
- Check the condition of the mains lead on your electrical power tool regularly and have any damage repaired by a competent specialist.
- Check the condition of extension leads regularly and replace them if they are damaged.
- Keep handles and hand grips clean, dry and free of oil and grease.

**15. Pull the mains plug out of the mains socket.**

- Do this if the electrical power tool is not being used, before carrying out maintenance tasks on the electrical power tool and whenever you are changing inserted tools, e.g. saw blades, drills or router bits.

**16. Make sure that no spanners, keys etc. are left attached.**

- Check before switching on that all spanners, keys and setting tools have been removed.

**17. Avoid unintentionally starting up the device.**

- Check that the switch is set to OFF on the device when the mains plug is inserted into the mains socket.

**18. Using an extension lead for working outdoors.**

- When working outside, always use an approved and appropriately labelled extension lead.

**19. Remain alert.**

- Watch what you are doing. Proceed with caution. Do not use electrical power tools if you cannot concentrate.

**20. Check the electrical power tool for damage.**

- Before the electrical power tool is used, carefully check the safety equipment and any slightly damaged parts to see that they are still working properly.
- Check that all moving parts on the tool are working properly, can move freely and are not damaged. All parts must be correctly attached and fulfil all the requirements necessary to allow the electrical power tool to operate properly.
- Damaged safety equipment and components must be properly repaired or replaced at a competent electrical equipment repair centre unless otherwise indicated in the operating instructions.
- Damaged switches must be replaced at a Customer Service Centre.
- Never use an electrical power tool that cannot be switched on and off properly.

**21. Caution!**

- The use of inserted tools and accessories other than those recommended by the manufacturer could lead to you being injured.

**22. Have your electrical power tool repaired at an electrical equipment repair specialist.**

- This electrical power tool complies with the relevant safety regulations. Repairs may only be carried out by a specialist electrical repair centre using original spare parts, otherwise injury could occur to the user.

### **Safety advice relating specifically to bench grinders**

- Do not touch the mains lead if it becomes damaged or cut through while you are using the device. Pull the plug out of the mains socket immediately and have the device repaired by a suitably qualified person or at your service centre.
- Do not operate the device if it is damp and do not use it in a damp environment.
- If you use the device outdoors, always connect it through a residual current device (RCD) with a maximum trip current of 30 mA. If using an extension lead, always use one that is approved for outdoor use.
- If a dangerous situation arises, pull the mains plug immediately out of the mains socket.
- Always work with the mains lead leading away from the rear of the device.
- Danger of fire from flying sparks !

Grinding metal creates flying sparks. For this reason, always make sure that nobody is placed in any danger and that there are no inflammable materials near the working area.

Warning! Noxious fumes!

Working with harmful / noxious dusts represents a risk to the health of the person operating the device and to anyone near the work area.

- Wear protective glasses, hearing protection, dust protection mask and protective gloves.
- Danger of burns! The workpiece gets hot during grinding. Never touch the part you are grinding. Allow the workpiece to cool sufficiently first. When grinding for longer periods, stop grinding from time to time and allow the workpiece to cool before continuing. Do not operate the device for continuous periods exceeding 10 minutes.
- The double grinding machine is intended for dry grinding of the surfaces of metal objects. The device may only be used for dry grinding.
- Do not grind materials containing asbestos. Asbestos is a known carcinogen.
- Do not use damaged grinding wheels.

- Only use grinding wheels with details that correspond with those given on the device rating plate. The circumferential speed should be equal to or greater than the value given on the device rating plate.
- Adjust the eye guard mounts (spark deflectors) and the eye guards periodically so that wear on the grinding wheels can be evened out. Keep the gap as small as possible.
- Avoid contact with the moving grinding wheel.
- Never leave the device working unattended.
- Never use the device for a purpose for which it was not intended.
- Before you insert the mains plug into the socket, always check that the device is switched off.
- Always switch the device on before bringing the workpiece into contact with the grinding wheel. After grinding, lift off the workpiece before switching the device off.
- Hold the workpiece firmly with both hands at all times when working.
- Always keep proper footing and balance.
- After you have finished grinding metal, allow the grinding wheel(s) to come to a standstill.
- When taking a break from your work, before carrying out any tasks on the device itself and when you are not using the device, always pull the mains plug out of the mains socket.
- Handle the device carefully and treat it with respect. Always keep the device clean, dry and free of oil or grease.
- Remain alert at all times! Always watch what you are doing and proceed with caution. Do not use the device if you cannot concentrate or you are feeling unwell.
- Store grinding wheels in such a way that they are not subject to mechanical loads or damaging environmental influences.
- Do not use damaged or unshaped wheels.
- The adjustment of the spark guard shall be made frequently, so as to compensate the wear of the wheel, keeping the distance between the guard and the wheel as small as possible, and no greater than 2 mm.

- The adjustment of the work rest shall be made frequently, so as to compensate the wear of the wheel, keeping the distance between the work rest and the wheel as small as possible, and no greater than 2 mm.
- Use wheels that have a bore exactly equal to the arbor of the grinder. Do not attempt to machine an undersized wheel to fit an arbor.
- Do not overtighten wheel nut.
- Do not grind on a cold wheel. The grinding wheel should be started and run at idle speed for one minute before applying the work.
- Do not grind on the side of the wheel. Grind on the face of the wheel only.
- Do not apply coolant directly to a grinding wheel. Coolant can weaken the bonding strength of the wheel and cause it to fail.
- Sparks are a hazard. Do not grind near gas or flammable liquids.
- Stand to one side of the wheel when turning on the power. Dress the wheel on the face only. Dressing the side of the wheel can cause it to become too thin for safe use.
- Grinding creates heat. Do not touch the work piece until you are sure it has cooled down sufficiently.
- Use grinding wheels that are rated for safe use on the grinder. Do not use a wheel that is rated lower than the grinder speed.

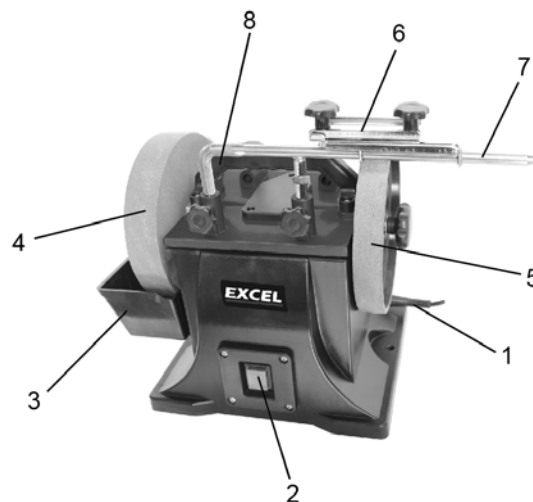
## 5. Technical Data

### Specifications:

<b>Mains Voltage -</b>	<b>230-240V / 50Hz</b>
<b>Power -</b>	<b>180W</b>
<b>No load Speed -</b>	<b>95rpm</b>
<b>Wet Wheel Dimensions -</b>	<b>Ø200 x 40 x Ø12mm</b>
<b>Stropping Wheel Size -</b>	<b>Ø200 x 30 x Ø12mm</b>

## 6.Product Features

- 1.Power cable
- 2.ON/OFF switch
- 3.Detachable water trough
- 4.Wet stone
- 5.Cow hide honing wheel
- 6.Tool rest/clamp
- 7.Adjustable support for tool rest/clamp
- 8.Lifting handing



## 7. Assembly

**WARNING!** Before assembly check to ensure grinder is unplugged from mains. Position on a flat surface with sufficient illumination

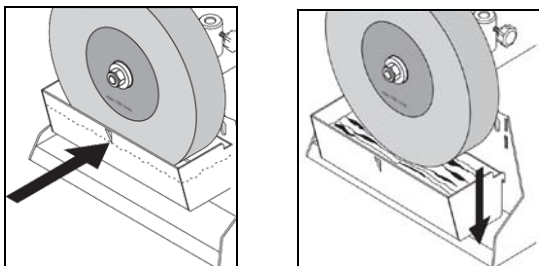
### Tool Rest

- Fit adjustable support for tool rest by unscrewing knobs and sliding rods into guides clamp in required position.
- Side tool rest clamp onto support.

### Water Reservoir

- Position water reservoir by hooking on to main body of sharpener.
- Ensure water reservoir is clear of rotating wheel.
- It is recommended to install the sharpener by mounting on a fireproof bench. Use the mounting holes to secure to work surface.

Note: The machine has no front or rear side so you can grind with or against the direction of wheel rotation. When positioning please consider access to ON/OFF switch.



### Grinding Wheels

#### Mandatory safety instructions.

(The following instructions must be observed together with those in section 1).

**DANGER! Use of a damaged wheel (stone) is dangerous and may cause damage and/or personal injury.**

**WARNING!** Ensure grinder is unplugged from mains supply before attempting to change grinding wheel (stone). Only persons qualified under the “abrasive wheels regulations” and holding a current grinding

wheel certificate are authorized to change and dress grinding wheels (stones).

- Grinding wheels used with this machine must be of an adequate speed rating and suitable for the material to be ground.
- Ensure the maximum speed specification of the wheel is higher than that indicated on the machine data plate.
- Check that grinding wheels are secure and that wheels are not worn or damaged, that there are no fissures or cracks. If damaged replace immediately.
- Ensure replacement wheel is not damaged in any way such as cracks, deformations or splinters etc. Also check the mounting flanges for deformation, burrs or chips. Damaged flanges must Not be used as they may produce high stresses in the wheel causing it to break. Do Not over tighten a wheel. Never tamper with a wheel in order to adapt it to a different size shaft.
- Install a new wheel as in 5.2. Once mounted on the grinder test the wheel before use by facing the grinder in a safe direction (point it away from yourself, others and vulnerable items) and run for a short time. Dress the wheel if necessary.

#### Wheel Changing Procedure.

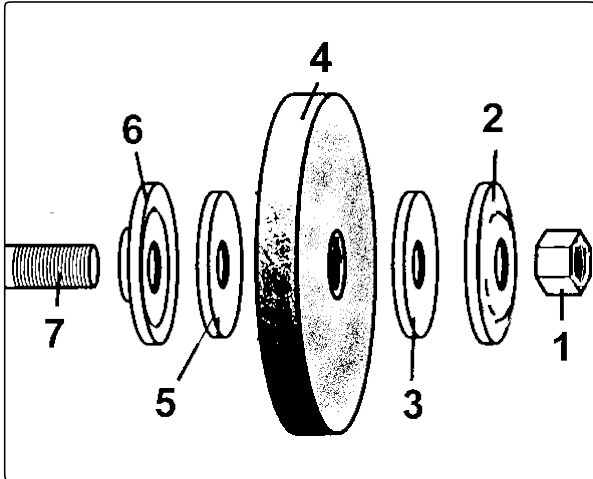
**WARNING!** Unplug sharpener from the mains power supply before changing wheel.

- Hold grinding wheel firmly - protect your hands with a cloth, or wear gloves.
- Unscrew retaining nut

**Note:** The nut has standard right-hand thread (undo anti-clockwise).and must be loosened by turning anticlockwise. it may be necessary to strike the wrench sharply in the loosening direction, with a soft-faced hammer, to loosen the nut.

- Remove grinding wheel washer in order carefully inspect the new wheel before installing to ensure there are no fissures, chips, or cracks.

**WARNING! DO NOT USE A DAMAGED WHEEL.**



- Inspect the blotters - if they are damaged, replace them. The grinder must never be used without genuine wheel blotters.
- Install the new wheel by reversing steps above.
- Hold wheel steady and secure locking nut. DO NOT over-tighten as this may crack the wheel.
- To remove hone honing wheel. Hold wheel firmly and unscrew retaining knob, remove washer, remove wheel by sliding off shaft and key.
- To refit repeat above in reverse order.

## 8. Operation

### Pre-use Inspection

**WARNING!** Inspect the sharpener before use. Ensure the sharpener is unplugged from the mains power before commencing the inspection.

- Check the tool rests are securely fixed and can not come in contact with the grinding wheel.
- Turn the grinding wheel/honing wheel by hand and check for any damage. Check they do not touch the tool rests and are correctly aligned.
- If any of the above checks fail, replace, repair, or adjust as necessary before starting the sharpener.

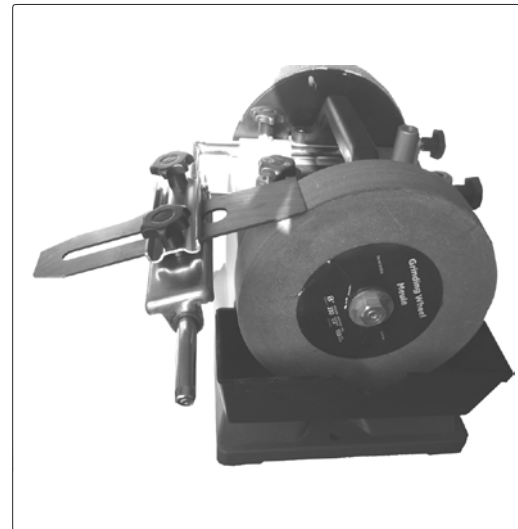
### Wheel Use

Fill water reservoir to point of "V" notch the stone will become saturated with water, refill water as required.

**DO NOT** grind without water. At the end of grinding process empty water from reservoir and clean out.

### Using the Sharpener

- Plug sharpener into the mains power supply.
- Clamp the tool into the tool rest/clamp





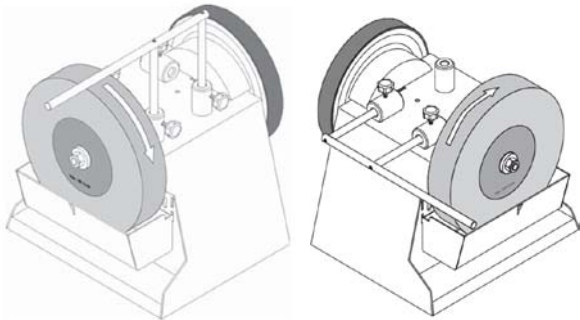


### **Direction of Grinding.**

It is recommended to work against the direction of the grinding stone if you require to remove large amounts of metal, and to grind with the direction of the wheel if finer more accurate work is required.

When using the honing wheel never sharpen against the direction of the wheel, as the tool will cut into the leather.

- Preparation of leather honing wheel.
- Before starting to use the honing wheel impregnate the leather with thin machine oil, then apply abrasive paste, turn on the wheel and spread the paste. this process will need to be done after about five to ten sharpenings or as required and will increase the life of the leather.



### **9. Maintenance**

**WARNING!** Ensure the grinder is unplugged from the mains power supply before performing any maintenance or service.

- the machine motor and bearings are sealed units and require no regular maintenance. should you require assistance, contact your local service agent.

### **10. Electrical Connection**

The installed electric motor is factory connected ready for operation. The connection meets the applicable VDE and DIN regulations.

The connection made by the customer as well as any extension cables used must comply with all relevant regulations.

Connection and repair work on the electric equipment must be carried out by a qualified technician only.

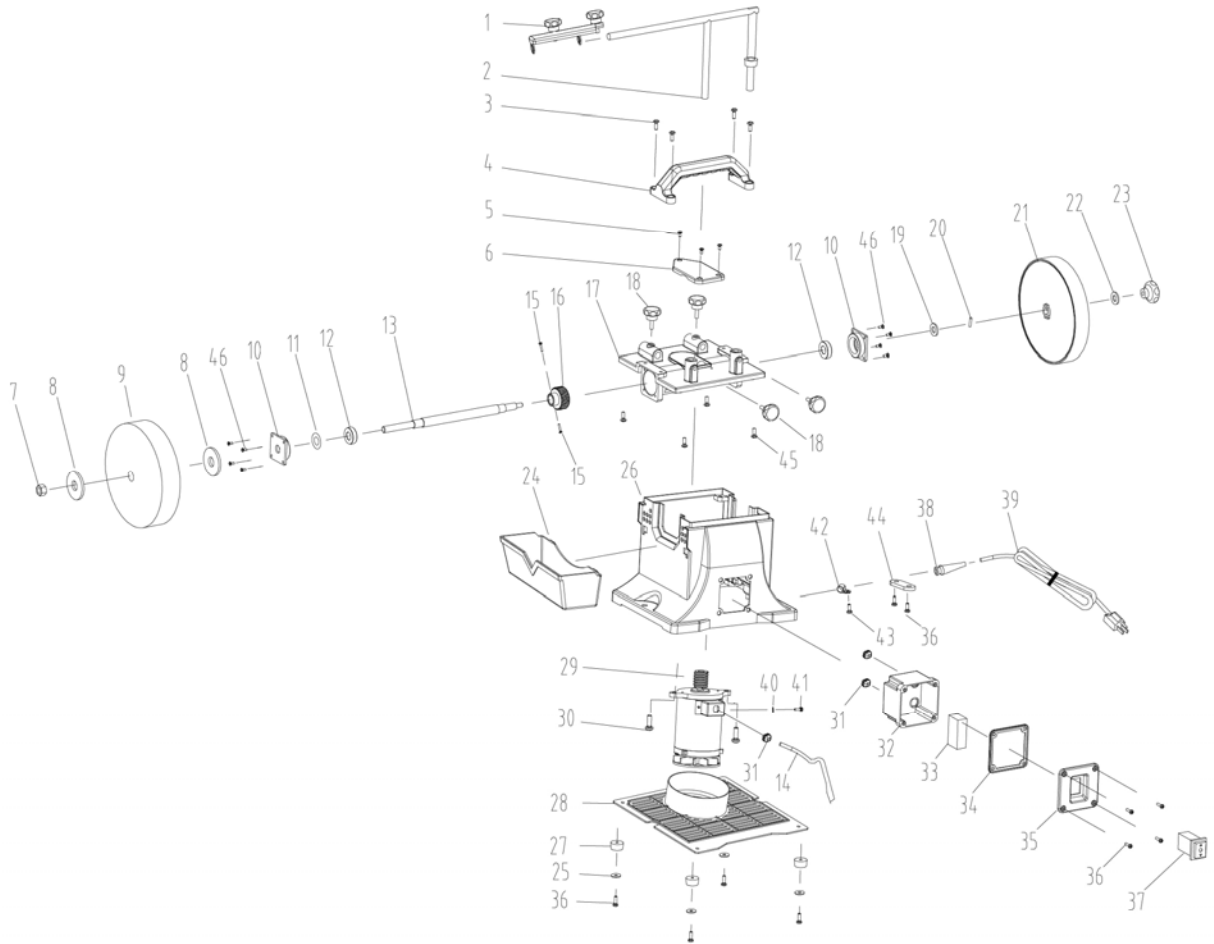
### **11. Disposal And Recycling**

The equipment is supplied in packaging to prevent it from being damaged in transit. The raw materials in this packaging can be reused or recycled. The equipment and its accessories are made of various types of material, such as metal and plastic. Never place defective equipment in your household refuse. The equipment should be taken to a suitable collection center for proper disposal. If you do not know the whereabouts of such a collection point, you should ask in your local council offices.

### **12. Storage**

Store the equipment and accessories out of children's reach in a dark and dry place at above freezing temperature. The ideal storage temperature is between 5 and 30 °C. Store the electric tool in its original packaging.

## Parts Diagram and Parts List



## Parts Diagram and Parts List

No.	Description	No.	Description
1	Blade holder assembly	24	Water tank
2	Support	25	Flat washer
3	Screw M6x12	26	Base
4	Handle	27	Rubber foot
5	Screw M4x8	28	Base plate
6	Worm gear case cover	29	Motor
7	Nut M12	30	Screw
8	Flange	31	Strain relief
9	Grinding wheel $\varnothing 200 \times 40 \times \varnothing 12$	32	Wire connection box
10	Bearing block	33	Capacitor
11	Washer	34	Rubber seal
12	Bearing 6002RZ	35	Switch plate
13	Main shaft	36	Screw
14	Cable	37	Switch
15	Screw	38	Cord sleeve
16	Worm gear	39	Cord & plug
17	Worm gear case	40	Washer
18	Knob	41	Screw
19	Washer	42	Clip
20	Pin	43	Screw
21	Buff Wheel	44	Cord plate
22	Washer	45	Screw
23	Lock knob	46	Screw

