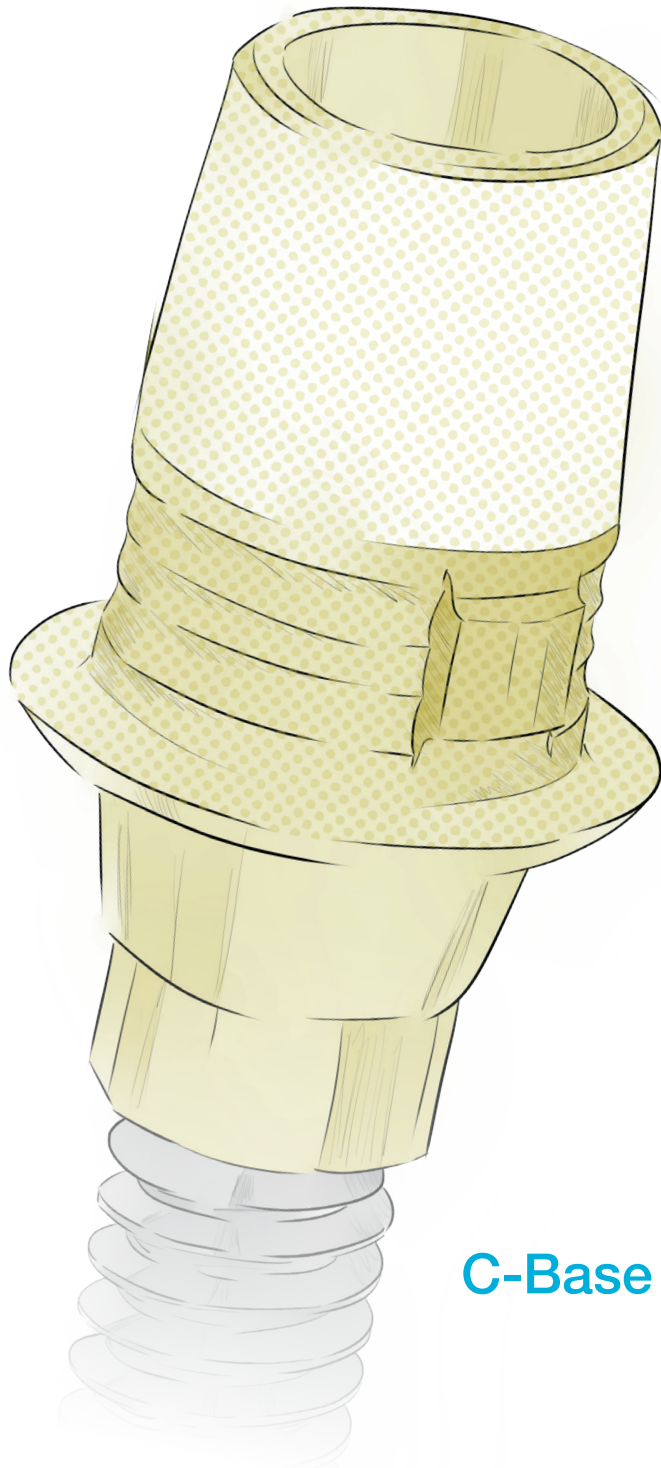




DESS

> DENTAL SMART SOLUTIONS



C-Base 2022/1



The Cerec® Sirona® system is undoubtedly one of the most complete and versatile solutions in the market.

Few solutions offer the agility the Cerec® System does, where you can go from scan to finish the piece in one session.

We create a compelling alternative that, based on the “Pure Switch” concept, would offer an improved solution to be used under the Sirona digital workflow with Sirona® libraries or available in DESS® libraries for 3Shape, Dental Wings & Exocad.

For this reason, we included slight modifications that enhance the overall properties of the product, without disrupting the usage.

These modifications can be summarized in:






- Gold anodized colour
- Multiple gingival heights
- SelectGrip® enhanced retention surface treatment
- Screw included, same as implant brand manufacturer
- Non-engaging versions

Manufactured in Titanium Grade 5 ELI, and with 15 implant compatibilities and more than 180 references, the DESS® C-Base® range is the most comprehensive offer of compatible Cerec® Ti-bases in the market.








Digital Workflow

Cerec® / Inlab Systems:

-  **1 Scan either intraoral or on the model**
Use either the Sirona scan post in the C-base or the “S/L” scan bodies
-  **2 Select the Cerec® / Inlab software reference**
To match the implant connection & platform compatibility
-  **3 Follow the Sirona® CAD Software instructions**
Design your restoration as per your needs
-  **4 Use the “S/L” Blocks to mill your abutment**
-  **5 Cement the zirconia mesostructure to the C-Base®**

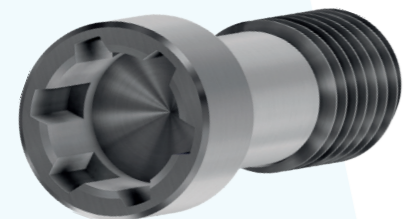
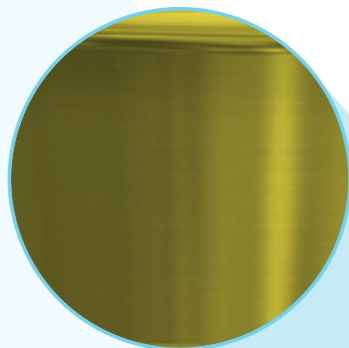
ExoCad or 3Shape:

-  **1 Scan either intraoral or on the model**
Use the DESS® Desktop or intraoral scan bodies
-  **2 Select the C-Base® reference in ExoCad or 3Shape**
Search for the implant/platform compatibility
-  **3 Design your restoration**
-  **4 Mill your abutment or send to mill**
-  **5 Cement the zirconia mesostructure to the C-Base®**

Reengineered to perfection

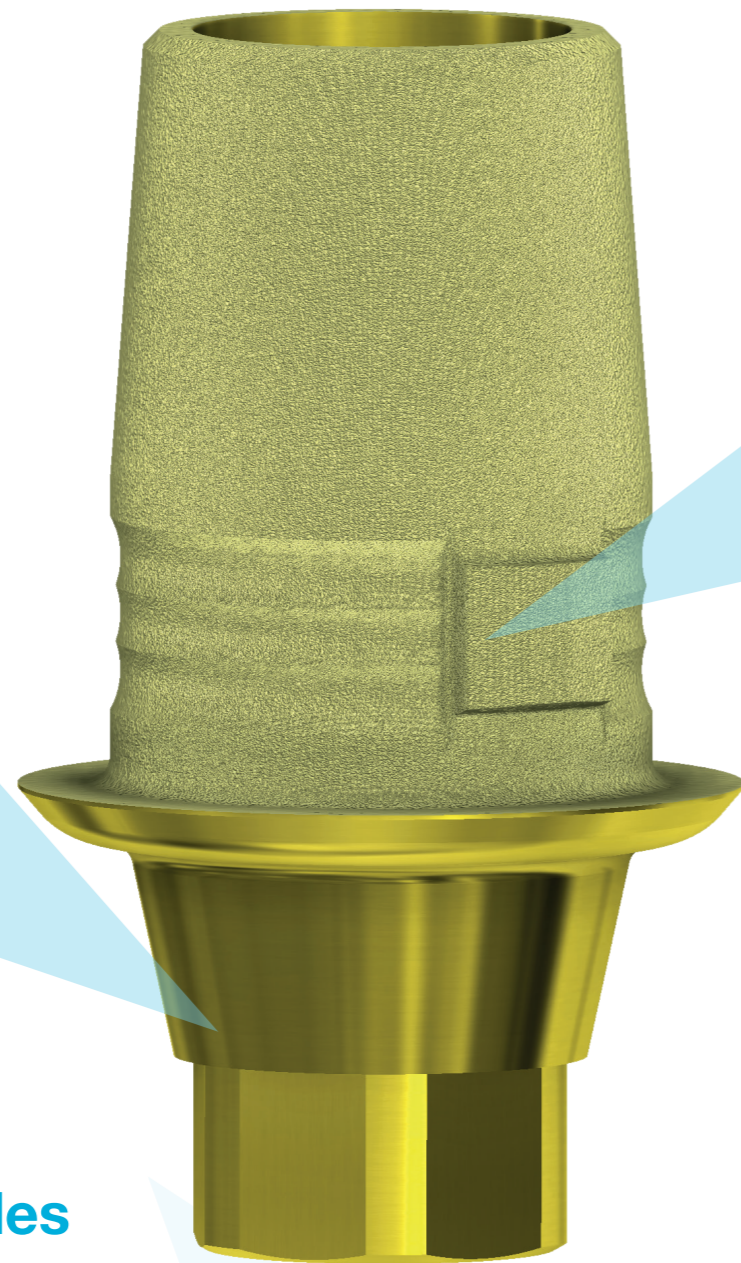
Improved aesthetic finish

Gold Anodized colour.

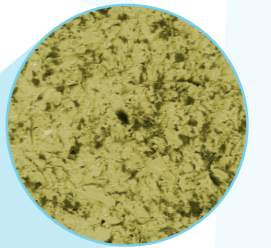


DESS® C-Base includes final screw

Identical to the Implant brand screw.

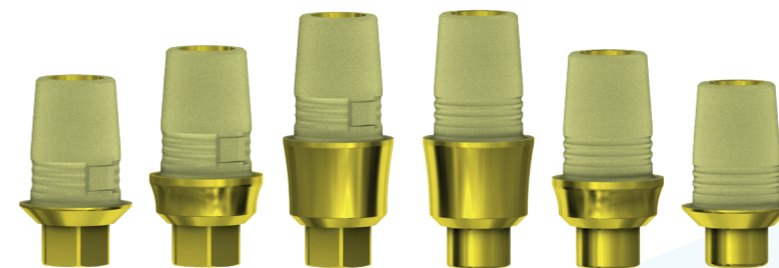


Engaging or non-engaging



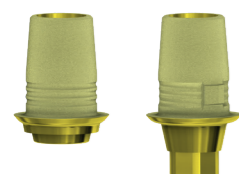
*Microscope view

SelectGrip® surface treatment enhancement, improves overall retention up to **500%**.

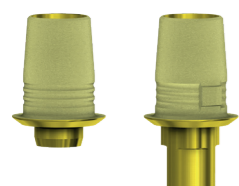


Multiple Gingival Heights

Up to 3 different alternatives.



		3.0	NP	RP	WP
NobelActive® & NobelReplace® CC Active Hex		3.0	3.5	4.3/5.0	5.5
GH 0,8mm	○		58.041	58.042	
GH 3,0mm	○		58.041/3	58.042/3	
GH 0,8mm	⬡		59.041	59.042	
GH 3,0mm	⬡		59.041/3	59.042/3	
			19.027	19.030	



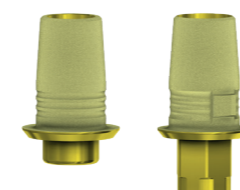
		NP	RP	WP	6.0
NobelReplace Select™ Tri-lobe		NP/3.5	RP/4.3	WP/5.0	6.0
GH 0,4mm	○	58.004		58.006	58.097
GH 0,5mm	○		58.005		
GH 1,5mm	○	58.004/2	58.005/2	58.006/2	
GH 3,0mm	○	58.004/3	58.005/3	58.006/3	
GH 0,4mm	⬡	59.004		59.006	59.097
GH 0,5mm	⬡		59.005		
GH 1,5mm	⬡	59.004/2	59.005/2	59.006/2	
GH 3,0mm	⬡	59.004/3	59.005/3	59.006/3	
		19.004	19.005	19.005	19.005



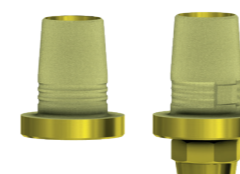
		NP	RP	WP
Nobel Brånemark® External Hex Universal		NP/3.5	RP/4.1	WP/5.1
GH 1,5mm	○	58.001/2	58.002/2	
GH 3,0mm	○	58.001/3	58.002/3	
GH 0,6mm	⬡	59.001	59.002	
GH 1,5mm	⬡	59.001/2	59.002/2	
GH 3,0mm	⬡	59.001/3	59.002/3	
	⬡	19.027	19.028	



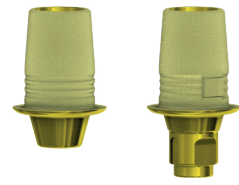
		NP	RP	WP
3i Osseotite® External HEX USA		3.4	4.1	5.0
GH 1,5mm	○	58.011/2	58.012/2	58.013/2
GH 3,0mm	○	58.011/3	58.012/3	58.013/3
GH 0,6mm	⬡	59.011	59.012	59.013
GH 1,5mm	⬡	59.011/2	59.012/2	59.013/2
GH 3,0mm	⬡	59.011/3	59.012/3	59.012/3
		19.034	19.034	19.034



		NP	RP	WP
3i Certain® Internal HEX "CLICK"		3.4	4.1	5.0
GH 0,4mm	○	58.014	58.015	
GH 0,5mm	○			58.016
GH 1,5mm	○	58.014/2	58.015/2	58.016/2
GH 3,0mm	○	58.014/3	58.015/3	58.016/3
GH 0,4mm	⬡	59.014	59.015	
GH 0,5mm	⬡			59.016
GH 1,5mm	⬡	59.014/2	59.015/2	59.016/2
GH 3,0mm	⬡	59.014/3	59.015/3	59.016/3
		19.011	19.011	19.011

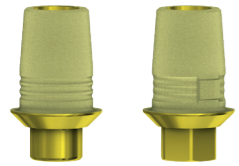


		NNC	RN	WN
Straumann® Soft Tissue Level & synOCTA® Octagon		3.5	4.1/4.8	4.8/6.5
GH 1,0mm	○		58.009	
GH 1,2mm	○			58.045
GH 1,0mm	⬡		59.009	
GH 1,2mm	⬡			59.045
			19.026	19.026



Straumann® Bone Level
Conical BL

		NP	RP	NP/RP
		NC/3.3	RC/4.1-4.8	NC/RC
GH 0,7mm	○	58.043	58.044	
GH 3,0mm	○	58.043/3	58.044/3	
GH 0,7mm	⊕	59.043	59.044	
GH 3,0mm	⊕	59.043/3	59.044/3	
		19.032	19.033	



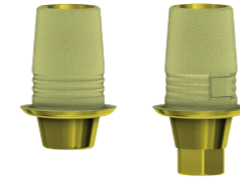
Zimmer Screw-vent®
Internal Hex USA

		NP	RP	WP
		3.5	4.5	5.7
GH 0,5mm	○	58.017	58.018	58.019
GH 1,5mm	○	58.017/2	58.018/2	58.019/2
GH 3,0mm	○	58.017/3	58.018/3	58.019/3
GH 0,5mm	⊕	59.017	59.018	59.019
GH 1,5mm	⊕	59.017/2	59.018/2	59.019/2
GH 3,0mm	⊕	59.017/2	59.018/3	59.019/2
		19.012	19.012	19.012



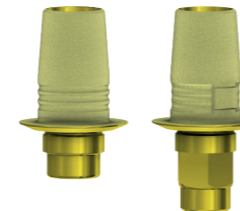
Astra Tech implant system™ EV
Conic EV

		EV/3.6	EV/4.2	EV/4.8
		3.6	4.2	4.8
GH 1,0mm	○	58.059	58.060	58.061
GH 3,0mm	○	58.059/3	58.060/3	58.061/3
GH 1,0mm	⊕	59.059	59.060	59.061
GH 3,0mm	⊕	59.059/3	59.060/3	59.061/3
		19.059	19.060	19.061



Astra Tech Osseospeed™
Internal Hex Conic

		NP	RP	WP
		3.0	3.5-4.0	4.5-5.0
GH 0,8mm	○		58.024	
GH 0,9mm	○			58.025
GH 3,0mm	○		58.024/3	58.025/3
GH 0,8mm	⊕		59.024	
GH 0,9mm	⊕			59.025
GH 3,0mm	⊕		59.024/3	59.025/3
			19.016	19.017



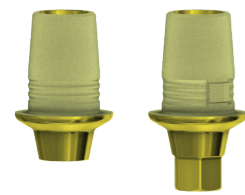
Dentsply Friadent Xive®
Internal Hex FD

		NP	RP	WP	5.5
		3.4	3.8	4.5	5.5
GH 0,3mm	○	58.038	58.039		
GH 0,6mm	○			58.040	58.071
GH 1,5mm	○	58.038/2	58.039/2	58.040/2	58.071/2
GH 3,0mm	○	58.038/3	58.039/3	58.040/3	58.071/3
GH 0,3mm	⊕	59.038	59.039		
GH 0,6mm	⊕			59.040	59.071
GH 1,5mm	⊕	59.038/2	59.039/2	59.040/2	59.071/2
GH 3,0mm	⊕	59.038/3	59.039/3	59.040/3	59.071/3
		19.024	19.024	19.024	19.024



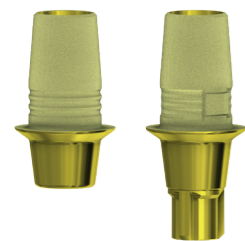
Dentsply Ankylos® C/X
Internal ANK

GH 1,4mm	○			58.050
GH 2,5mm	○			58.050/2
GH 1,4mm	⊕			59.050
GH 2,5mm	⊕			59.050/2
				19.702



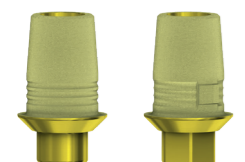
OSSTEM® TS Conic OSS

		PRODUCT REFERENCES	
		Mini	STD
		Mini	Regular
GH 1,0mm	○	58.072	58.073
GH 3,0mm	○	58.072/3	58.073/3
GH 1,0mm	⬡	59.072	59.073
GH 3,0mm	⬡	59.072/3	59.073/3
		19.072	19.073



CONELOG® Internal CON

		PRODUCT REFERENCES		
		NP	RP	WP
		3.3	3.8/4.3	5.0
GH 1,0mm	○	58.074	58.075	58.076
GH 2,1mm	○	58.074/2	58.075/2	58.076/2
GH 1,0mm	⬡	59.074	59.075	59.076
GH 2,1mm	⬡	59.074/2	59.075/2	59.076/2
		19.074	19.074	19.074



BioHorizons® Internal Internal Hex BH

		PRODUCT REFERENCES			
		3.0	NP	RP	WP
		3.0	3.5	4.5	5.7
GH 0,5mm	○	58.087	58.088	58.089	
GH 3,0mm	○	58.087/3	58.088/3	58.089/3	
GH 0,5mm	⬡	59.087	59.088	59.089	
GH 3,0mm	⬡	59.087/3	59.088/3	59.089/3	
		19.043	19.043	19.043	

CONNECTION	SOFTWARE	PRODUCT REFERENCES						SCREW	TORQUE	PLATFORM	
		GH1		GH2		GH3					
		○	○	○	○	○	○				
NOBEL ACTIVE® & NOBEL REPLACE® CC	L	NB A 4.5 L	58.041	59.041			58.041/3	59.041/3	19.027	35 Ncm	NP
		NB A 5.0 L	58.042	59.042			58.042/3	59.042/3	19.030		RP
NOBEL REPLACE SELECT™	L	NB RS 3.5 L	58.004	59.004	58.004/2	59.004/2	58.004/3	59.004/3	19.004	35 Ncm	NP (3.5)
		NB RS 4.3 L	58.005	59.005	58.005/2	59.005/2	58.005/3	59.005/3	19.005		RP (4.3)
		NB RS 5.0 L	58.006	59.006	58.006/2	59.006/2	58.006/3	59.006/3	19.005		WP (5.0)
		NB RS 6.0 L	58.097	59.097	58.097/2	59.097/2	58.097/3	59.097/3	19.005		6.0
NOBEL BRÄNEMARK®	L	NB B 3.4 L		59.001	58.001/2	59.001/2	58.001/3	59.001/3	19.027	35 Ncm	NP (3.4)
		NB B 4.1 L		59.002	58.002/2	59.002/2	58.002/3	59.002/3	19.028		RP (4.1)
3i OSSEOTITE™	L	B 0 3.4 L		59.011	58.011/2	59.011/2	58.011/3	59.011/3	19.034	20 Ncm	3.4
		B 0 4.1 L		59.012	58.012/2	59.012/2	58.012/3	59.012/3	19.034		4.1
		B 0 5.0 L		59.013	58.013/2	59.013/2	58.013/3	59.013/3	19.034		5.0
3i CERTAIN®	S	B C 3.4 S	58.014	59.014	58.014/2	59.014/2	58.014/3	59.014/3	19.011	20 Ncm	3.4
		B C 4.1 L	58.015	59.015	58.015/2	59.015/2	58.015/3	59.015/3	19.011		4.1
		B C 5.0 L	58.016	59.016	58.016/2	59.016/2	58.016/3	59.016/3	19.011		5.0
STRAUMANN® SOFT TISSUE LEVEL & synOcta®		S SO 4.8 L	58.009	59.009					19.026		RN
		S SO 6.5 L	58.045	59.045					19.026		WN
STRAUMANN® BONE LEVEL	L	S BL 3.3 L	58.043	59.043			58.043/3	59.043/3	19.032	35 Ncm	NC
		S BL 4.1 L	58.044	59.044			58.044/3	59.044/3	19.033		RC
ZIMMER® SCREW-VENT®	L	Z TSV 3.5 L	58.017	59.017	58.017/2	59.017/2	58.017/3	59.017/3	19.042	30 Ncm	3.5
		Z TSV 4.5 L	58.018	59.018	58.018/2	59.018/2	58.018/3	59.018/3	19.042		4.5
		Z TSV 5.7 L	58.019	59.019	58.019/2	59.019/2	58.019/3	59.019/3	19.042		5.7
ASTRA TECH IMPLANT SYSTEM™ EV	S	AT EV 3.6 GH1 S	58.059	59.059			58.059/3	59.059/3	19.059	25 Ncm	3.6
		AT EV 4.2 GH1 L	58.060	59.060			58.060/3	59.060/3	19.060		4.2
		AT EV 4.8 GH1 L	58.061	59.061			58.061/3	59.061/3	19.061		4.8
ASTRA TECH OSSEOSPEED™	L	AT OS 3.5/4.0 L	58.024	59.024			58.024/3	59.024/3	19.016	20 Ncm	3.5/4.0
		AT OS 4.5/5.0 L	58.025	59.025			58.025/3	59.025/3	19.017		25 Ncm
DENTSPLY FRIADENT XIVE®	S	FX 3.4 S	58.038	59.038	58.038/2	59.038/2	58.038/3	59.038/3	19.024	24 Ncm	3.4
		FX 3.8 S	58.039	59.039	58.039/2	59.039/2	58.039/3	59.039/3	19.024		3.8
		FX 4.5 L	58.040	59.040	58.040/2	59.040/2	58.040/3	59.040/3	19.024		4.5
		FX 5.5 L	58.071	59.071	58.071/2	59.071/2	58.071/3	59.071/3	19.024		5.5
DENTSPLY ANKYLOS™ C/X	S	ANKN C/ GH1 S	58.050	59.050					19.046	15 Ncm	C/X
		ANKN C/ GH2 S			58.050/2	59.050/2			19.046		
OSSTEM® TS	L	O TS 3.5 L	58.072	59.072			58.072/3	59.072/3	19.072	20 Ncm	MINI
		O TS 4.0 L	58.073	59.073			58.073/3	59.073/3	19.0737		30 Ncm
CONELOG®	S	CONELOG 3.3/x	58.074	59.074	58.074/2	59.074/2			19.052	20 Ncm	3.3
		CONELOG 3.8/x	58.075	59.075	58.075/2	59.075/2			19.052		3.8/4.3
		CONELOG 5.0/x	58.076	59.076	58.076/2	59.076/2			19.053		5.0
BIOHORIZONS™ INTERNAL	L	BH 3.5 L	58.087	59.087			58.087/3	59.087/3	19.043	30 Ncm	3.5
		BH 4.5 L	58.088	59.088			58.088/3	59.088/3	19.043		4.5
		BH 5.7 L	58.089	59.089			58.089/3	59.089/3	19.043		5.7



All DESS products are manufactured according to ISO 9001 and ISO 13485 with CE marking for all products Class IIb

All DESS® AURUMBase® screws and screwdrivers are based on the standard ISO 10664

3i® and 3i Certain®, Miniplant®, MicroMiniplant™ and Osseotite® are registered trademarks of 3i Implant Innovations, USA

ASTRA TECH™, OsseoSpeed™, ANKYLOS® C/X, XiVE®, FRIADENT®, ASTRATECH implant system™ EV, Cerec®, Sirona® and UniAbutment® are registered trademarks of DENTSPLY SIRONA

BioHorizons® is a registered trademark of BioHorizons, INC.

Brånemark System®, NobelReplace® and Replace Select™, NobelActive™, NobelReplace® CC, NobelSpeedy™ and Multi-unit® are registered trademarks of Nobel Biocare AB, Sweden

ITI®, Straumann® and synOcta® are registered trademarks of Straumann Holding AG, Switzerland

MIS® is a registered trademark of MIS Implant Technologies Ltd.

Zimmer Screw-Vent® and SwissPlus® are registered trademarks of Zimmer Dental INC, USA

Dyna® is a registered trademark of Dyna Dental Engineering BV

Locator® is a registered trademark of ZEST IP Holdings

Camlog® and Conelog® are registered trademarks of CAMLOG Biotechnologies AG

Megagen® is a registered trademark of MEGAGEN IMPLANT CO. LTD

TORX® is a trademark of ACUMENT INTELLECTUAL PROPERTIES, LLC

Bego Semados® is a registered trademark of BEGO GmbH & Co. KG

Anthogyr® is a registered trademark of Anthogyr SAS

Medentis ICX® is a registered trademark of medentis medical GmbH

Osstem® is a registered trademark of OSSTEM IMPLANT CO. LTD

Dentium® is a trademark of Dentium Co. Ltd.

GOBALD® is a trademark of Global D SASU.

Biotech Kontakt® is a trademark Biotech Dental SAS.

BTI® is a trademark BTI Biotechnology Institute.

PHIBO® is a trademark PHIBO Dental Solutions S.L.

DESS products can be used only by licensed dentists, physicians and labs.

Please refer ever to the instructions of use available on the website

www.dessdental.com

or supplied with the product.

Some products may not be available in your country. Some of the products are cleared for US and Canada.

Please contact your local distributor for more details.



