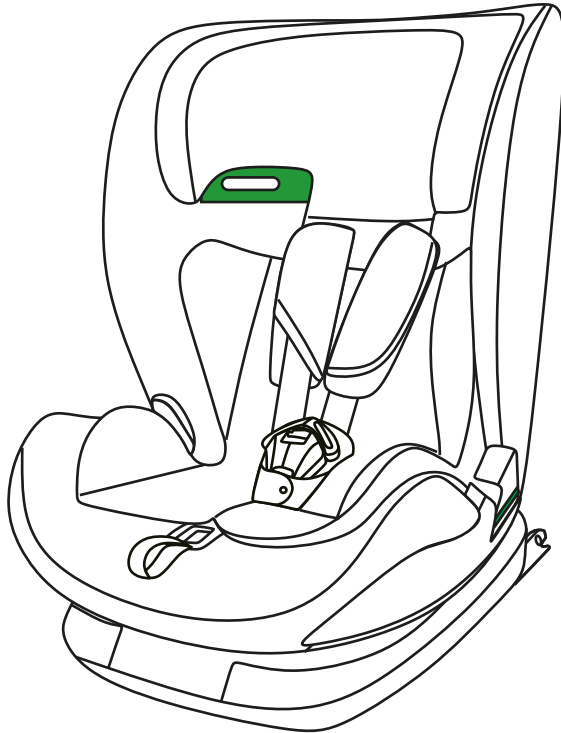


MyBabiie®

For little people who dream big

My Babiie iSize Car Seat

For infants of height ranges from 76cm to 150cm



IMPORTANT! KEEP FOR FUTURE REFERENCE

NOTICE

This is an i-Size Child Restraint System. It is approved according to UN Regulation No.129, for use in i-Size compatible vehicle seating positions as indicated by vehicle manufacturers in the vehicle users' manual.

If in doubt, consult either the Enhanced Child Restraint System manufacturer or the retailer.

Do not use the ECRS in seating positions where there is an active frontal airbag installed.

IMPORTANT

DO NOT USE BEFORE THE CHILD'S AGE EXCEEDS 15 MONTHS

WARNING

- Read this instruction manual carefully.
- The correct fitting of the ISOFIX and Top Tether anchoring systems is of vital importance for the safety of your child.
- For the future use of this seat it is important that you keep the instruction manual. There is a storage compartment on the back of the seat to keep this manual in.
- Never leave your child unattended in the car.
- Do not use a child safety seat if the vehicle seat is equipped with a front airbag. This can be dangerous. This does not apply to side airbags.
- **IMPORTANT - DO NOT USE BEFORE THE CHILD'S AGE EXCEEDS 15 MONTHS.**

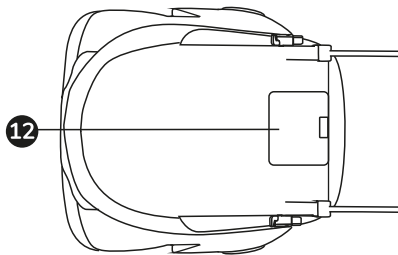
IMPORTANT

- Before using this product please read the instruction manual carefully, the product is a safety product and is only safe when used in accordance with the instruction manual.
- The product must only be used on a forward facing seat that is fitted with the ISOFIX and Top Tether anchoring systems.
- The product may only be used on either the front or the back seat. However, we recommend that it is fitted on the back seat.
- The product has been approved according to the strictest European safety standards (R129/03) and is for stature 76-105cm (child mass limit 18kg), Forward facing, ISOFIX+Top Tether+ Harness and is for stature 100-150cm, Forward facing, ISOFIX attachment + Vehicle 3 point belt and is for 100-150cm, Forward facing Vehicle 3 point belt.
- After an accident the seat may become unsafe due to damage that is not noticeable immediately. It should therefore be replaced.
- The safety of the seat can only be guaranteed by the manufacturer if it is issued by the original owner.
- We advise strongly that you do not use a second hand product because you cannot be certain it is in good condition.
- The harness pads and crotch pad are important for the safety of your child, therefore use them for the child of heights between 76 and 105 cm.
- Ensure that all luggage and objects likely to cause injury in the event of an accident are properly secured in the vehicle.
- Do not use this child seat in passenger seats that are equipped with airbags.
- It is recommended that a car seat should not be used for more than 5 years from the date of production. The properties of the car seat may deteriorate due to, for example, ageing of the plastic, and this may not be visible.
- The baby car seat must not be used without the seat cover. Please use the original cover as the cover contributes to the safety of the seat.
- The seat must be secured with a seat belt or Isofix and Top Tether, even when not in use. An unsecured seat may injure other passengers in the event of an urgent stop or accident.
- The rigid items and plastic parts of an Enhanced Child Restraint System shall be so located and installed that they are not liable, during everyday use of the vehicle, to become trapped by a movable seat or in a door of the vehicle.
- Ensure that the seat is not damaged by heavy luggage, adjustable seats or slamming the car door e.t.c
- No alterations may be made to this product as it could affect part or the overall safety of the seat.
- In hot weather the plastic and metal parts will become hot. You should cover the seat when the car is parked under the sun.
- In order to prevent damage to the cover do not try to remove any logos or labels.
- Take short breaks during long journeys so that your child can stretch out from the car seat.
- Any straps holding the restraint to the vehicle should be tight, any straps restraining the child should be adjusted to the child's body and the straps should not be twisted.
- Ensure the lap strap is worn low down so the pelvis is firmly engaged.

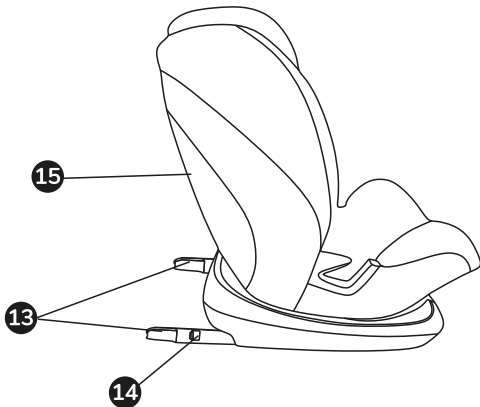
KNOW YOUR CAR SEAT



1. Headrest
2. Shoulder pads
3. Shoulder strap
4. Harness adjusting button
5. Harness adjusting strap
6. Belt guide
7. Headrest adjusting loop
8. Inner cushion
9. Harness buckle
10. Crotch pad
11. Base



12. Instruction storage



13. ISOFIX connector
14. ISOFIX release button
15. Manual cover

USE IN THE VEHICLE

Certification

	Child height	Facing direction	Installation	Approval type
My Babiie iSize Car seat	76cm to 105cm	Forward	ISOFIX + Top Tether + Harness	i-Size
	100cm to 150cm	Forward	Vehicle 3 point belt + ISOFIX attachment	i-Size Booster seat
			Vehicle 3 point belt	

*ECE = European Standard for Safety Equipment

The child safety seat has been designed, tested and certified according to the requirements of the European Standard for Child Safety Equipment (ECE R 129).

The seal of approval E (in a circle) and the approval number are located on the approval label (sticker on the child safety seat).

This approval will be invalidated if you make any modifications to the child safety seat.

Only the manufacturer is permitted to make modifications to the child safety seat.

2. Use in the vehicle

On front passenger seat

 Yes

Only if there's no airbag or it is turned off! There must be an ISOFIX system.
(Slide the seat back and refer to vehicle instructions).

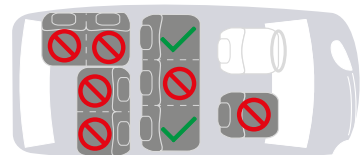
WARNING

Never use the child car seat without its fabric cover.

The fabric cover should not be replaced with any other than the ones recommended by the manufacturer. The fabric cover will affect the integral performance of the baby/child restraint system.

Never try any other force points than those indicated, the main force points of this product are the ISOFIX adapter and the Top Tether.

You can use your child car seat as follows:



SECURING YOUR BABY

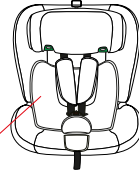
3. Securing your baby

3.1 Using the baby insert

⚠ CAUTION

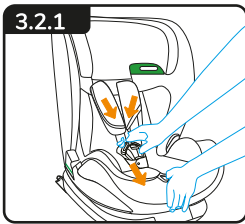
If your child's height is between 87cm and 150cm please remove the inner cushion from the car seat before use.

Inner cushion

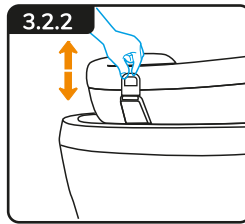


- Always secure your baby in the car seat using the harness or belts.
- Never leave your baby unattended in the car seat when placing it on elevated surfaces (E.g. a table, nappy changing unit, e.t.c)
- Never allow the strap end to become caught in moving parts (e.g. automatic doors, escalators, etc.).
- **Caution!** The plastic parts of the car seat heat up in the sun, so that your baby may get burnt.
- Protect your baby and the car seat against intensive solar radiation (e.g. by putting a light cloth over the seat).
- Take your baby out of the car seat as often as possible to relieve its spine. We recommend frequent breaks during long journeys. Even outside of the car, please avoid leaving your baby in the car seat for too long.

3.2 Adjusting harness system & headrest



Loosen the shoulder straps by pressing the harness adjusting button and pull the shoulder straps as far forward as possible.



Pull the headrest adjusting loop to adjust the headrest upwards, pull the headrest adjusting loop and push the headrest back to slide the headrest downwards.

Before installing the car seat into your vehicle, please move the headrest to the correct height for your baby/child and check that it is properly engaged by lightly sliding the headrest down.

There are 12 adjustable headrest positions. Please adjust the headrest height close to your baby/child's shoulder position, if at the middle of two positions, please use the higher position.

SECURING YOUR BABY

3.3 Change the reclining positions

There are 5 recline positions of this product. To change the position, grasp the lever at the front of the seat, push or pull the seat into the desired position until you hear an audible “click” sound .

Forward facing

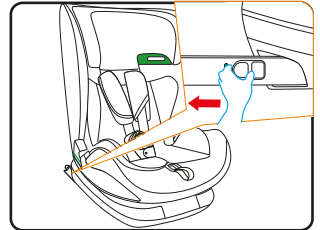
The reclining positions and upright position can all be adjusted for forward facing use with stature 76-150cm .



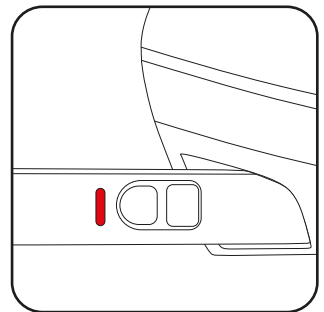
INSTALLATION IN THE VEHICLE

4.1 Installation instructions for child of height 76-105cm, forward facing, ISOFIX + Top Tether + harness

Unfold the top tether until it locks in place. Press the ISOFIX release button to slide the ISOFIX connectors to the end.

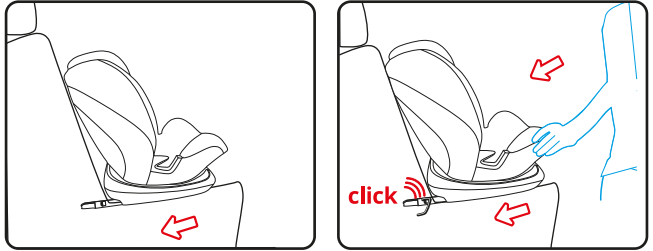


Caution: Please only move to the next step when the ISOFIX has been slid to the end with the red indicators showing.

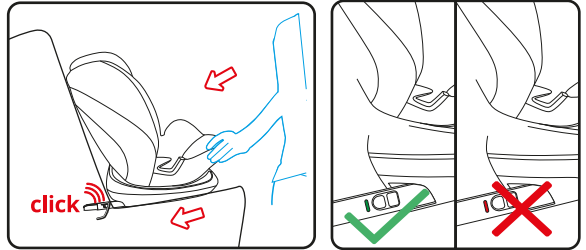


INSTALLATION IN THE VEHICLE

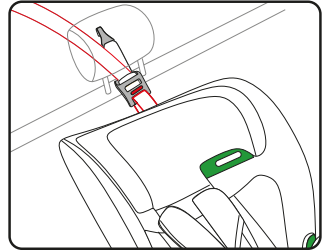
Push the ISOFIX connectors directly into the anchorages until you hear an audible “click” sound.



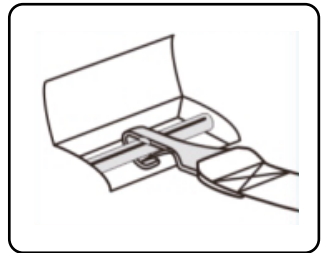
Grasp the seat body to check the seat if it is fastened tightly or shakes, meanwhile observe the ISOFIX red/green indicator. If the seat shakes and the ISOFIX connectors are pulled out, please repeat the above steps and install it again.



Pull out the top tether and press the tether strap release button to extend the strap until it is long enough to hook onto the user-ready tether anchorage behind.

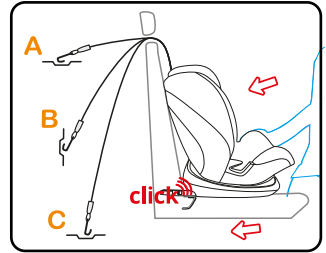


Hook the tether strap hook onto the user-ready anchorages. There may be 3 anchorages for the hook, please find one most suitable.



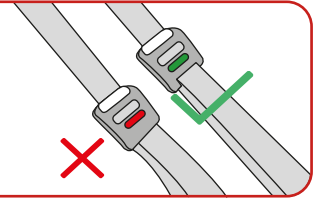
INSTALLATION IN THE VEHICLE

Pull the tether strap on the other end back to tighten the top tether.

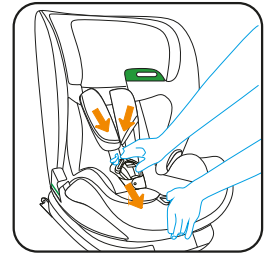


! CAUTION

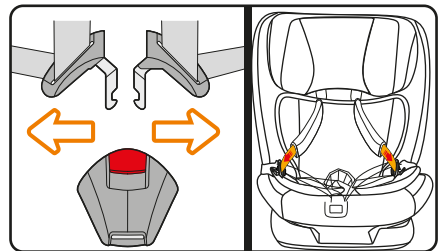
If the top tether is tightened correctly, a green mark will show up on the other end of the strap release button. Ensure you check this.



Loosen the shoulder straps by pressing the harness adjusting button and pull the harness shoulder as far forward as possible.



Open the buckle by pressing the red button, then fix the shoulder straps at the side of the car seat.



INSTALLATION IN THE VEHICLE

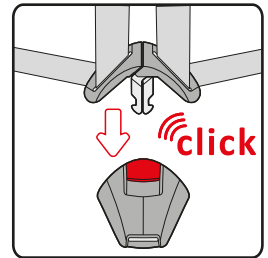
Place child in the car seat.



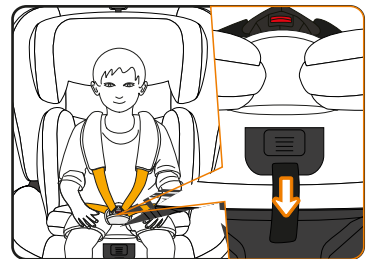
Please note a correctly adjusted headrest ensures optimal protection for your child in the safety seat; the headrest must be adjusted so that the shoulder straps are at the same level as your child's shoulders or slightly above.



Guide the two buckle latches together and engage them before putting them into the buckle, this should make a clicking sound.



Tighten the harness adjusting strap and make sure the harness is reasonably tight. It should restrain but not make the child uncomfortable.



INSTALLATION IN THE VEHICLE

⚠ CAUTION

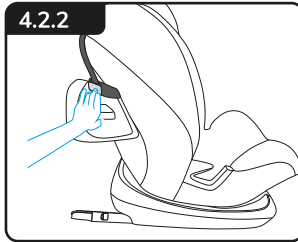
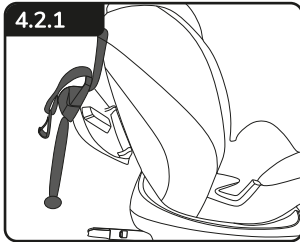
Please ensure that the lap strap is worn low down, so that the pelvis is firmly engaged. Pull on the strap until it lies flat and is close against your child's body. The straps should be correctly adjusted and ensure they are not twisted.

⚠ CAUTION

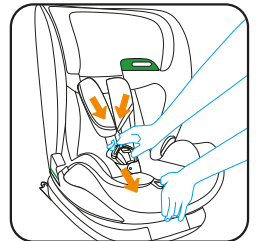
Pull the strap end straight towards you, not upwards or downwards. Please pay attention to the strap end. Whilst travelling (especially outside the car) it should always be attached to the cover.

4.2 Installation instruction for Stature 100-150cm, Forward facing, ISOFIX attachment + Vehicle 3 point belt.

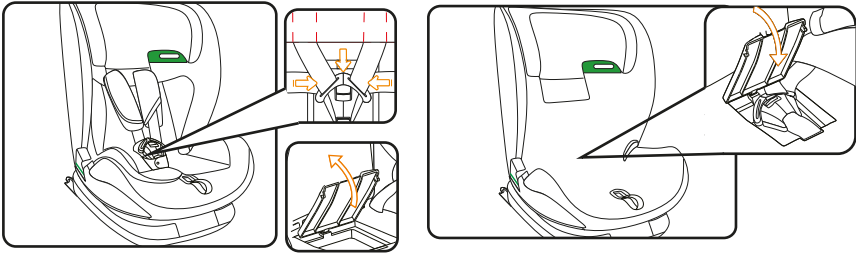
The 100-150cm i-Size Booster seat cannot use the top tether, the top tether should be fully stored away.



Remove the baby insert, loosen the shoulder straps by pressing the harness adjusting button and pull the harness shoulder as far forward as possible.

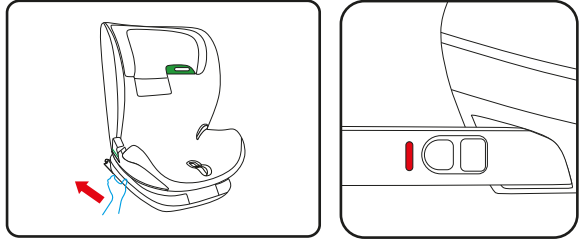


INSTALLATION IN THE VEHICLE

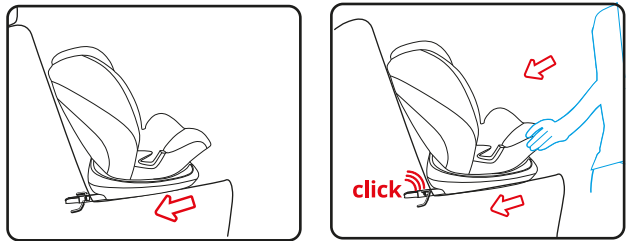


Place the shoulder strap behind the headrest cover, open the cover of buckle storage, assemble the buckle properly, then put it in the storage and close it.

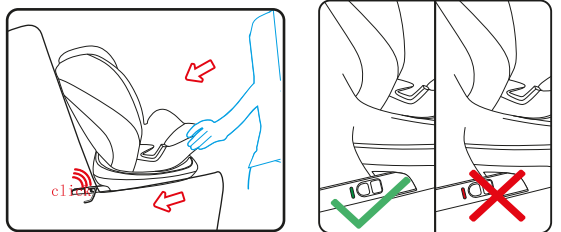
Caution: Please only move to the next step when the ISOFIX has been slid to the end with the red indicators showing.



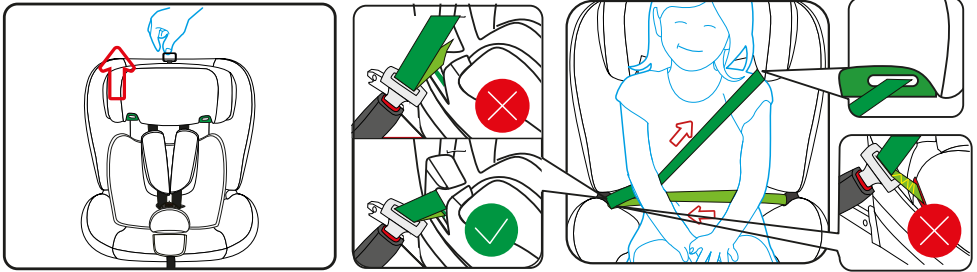
Push the ISOFIX connectors directly into the anchorages until you hear an audible "click" sound.



Grasp the seat body to check the seat if it is fastened tightly or shakes, meanwhile observe the ISOFIX red/green indicator. If the seat shakes and the ISOFIX connectors are pulled out, please repeat the above steps and install it again.



INSTALLATION IN THE VEHICLE

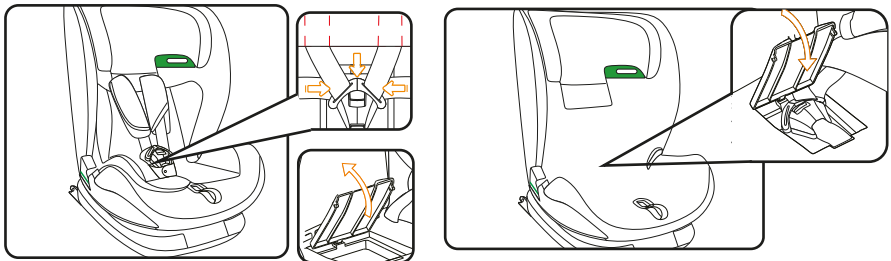
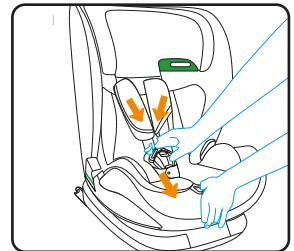


Adjust the height of the headrest to suit your child. Put the vehicle belt through the belt guide. Place your child into the baby car seat and let the vehicle belt pass the belt guide. Fasten the vehicle belt with an audible “click” sound.

⚠ CAUTION

Make sure lap strap lap is worn low down, so that the pelvis is firmly engaged. Pull on the strap until it lies flat and is close against your child's body. The straps should be correctly adjusted and ensure they are not twisted.

Remove the baby insert, loosen the shoulder straps by pressing the harness adjusting button and pull the harness shoulder as far forward as possible.

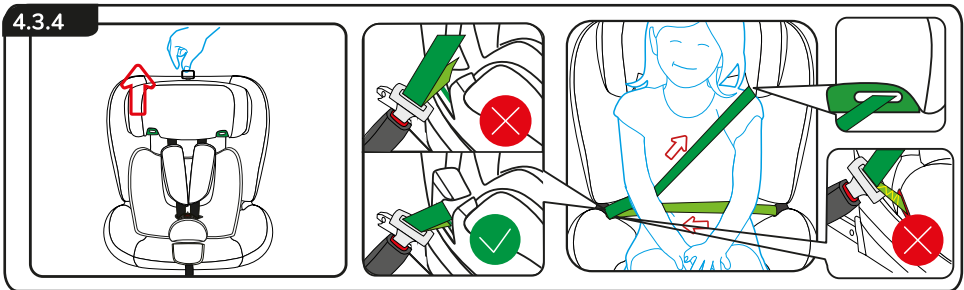
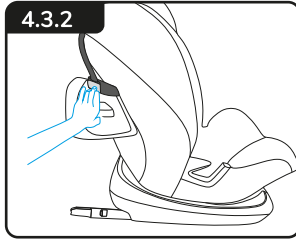
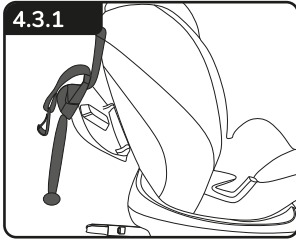


Place the shoulder strap behind the headrest cover, open the cover of buckle storage, assemble the buckle properly, then put it in the storage and close it.

INSTALLATION IN THE VEHICLE

4.3 Installation instruction for Stature 100-150cm, Forward facing, Vehicle 3 point belt.

The 100cm - 150cm i-Size Booster seat cannot use the top tether, the top tether should be fully stored away.



Adjust the height of the headrest to suit your child. Put the vehicle belt through the belt guide. Place your child into the baby car seat and let the vehicle belt pass the belt guide. Fasten the vehicle belt with an audible “click” sound .

CAUTION

Make sure lap strap lap is worn low down, so that the pelvis is firmly engaged. Pull on the strap until it lies flat and is close against your child's body.

The straps should be correctly adjusted and ensure they are not twisted.

CLEANING

Please be sure to use only original My Babiie replacement seat covers, as the seat cover is important to the proper functioning of the system. Replacement seat covers are available from My Babiie.



The child seat must not be used without the seat cover.

- The cover can be removed and hand washed at 30°C with a mild detergent. Please observe the instructions on the washing label of the cover. The colours of the cover may fade if washed at more than 30°C. Never tumble dry in an electric clothes dryer (the fabric may separate from the padding).
- The plastic parts can be cleaned using soapy water. Do not use harsh cleaning agents (such as solvents).
- The harness can be removed and washed in lukewarm soapy water.

Caution! Never remove the buckle tongues from the straps.

WARRANTY

For this child seat we provide a 1 year warranty against manufacturing or material defects. The warranty period is effective from the day of purchase.

The Warranty does not cover:

- Natural signs of wear and damage resulting from excessive stress.
- Damage resulting from inappropriate or improper use.

What is covered by the Warranty?

Fabric: All of our fabrics meet very high requirements with regards to colour fastness when exposed to UV radiation. Nevertheless, all fabrics fade when exposed to UV radiation. This is not a material defect, but rather a normal sign of wear which is not covered by the Warranty.

Buckle: Buckle malfunction is often due to accumulations of dirt and dust which may stop it from working properly. If this happens, please firstly check if you can clean by yourself without damaging the installation. If not, please contact the aftersale service. Please contact your retailer directly in the event of a warranty claim. He or she will give you the advice and support you need. When processing claims, product-specific depreciation rates will be applied. Please refer to our General Terms and Conditions which are available from your retailer.

MyBabiie®

For little people who dream big

REGISTER YOUR PRODUCT AT

www.mybabiie.com/warranties

**In the first instance of needing assistance please
contact your original place of purchase.**

This product qualifies for 12 month warranty
when registered through our website

STAY CONNECTED!



My Babiie



@MyBabiieOfficial



My Babiie



@mybabiie_official

My Babiie Ltd

Repton Manor, Repton Avenue, Ashford, Kent, TN23 3GP