

Instructions for using the Creative Turning Longworth chucks (LSC-250 and LSC-350)

The Creative Turning Longworth chucks are great for finishing the bottom of bowls. They screw directly onto the lathe spindle and two models are available:

1. The [CT-LSC-250-M33-B](#) 10" model comes with a spindle thread of M33x3.5mm. An insert is available [CT A-M33X3.5-1-8](#) to use them on lathes with a 1"x8 spindle thread.

- External chucking: 95-230mm
- Internal chucking: 65-200mm
- Fits on lathes with 12" swing or larger

2. The [CT-LSC-350-XXX-B](#) 14" model with either M33x3.5 or 1.1/4"x8tpi spindle thread. Again an insert is available [CT A-M33X3.5-1-8](#) to use the M33 version on lathes with a 1"x8 spindle thread.

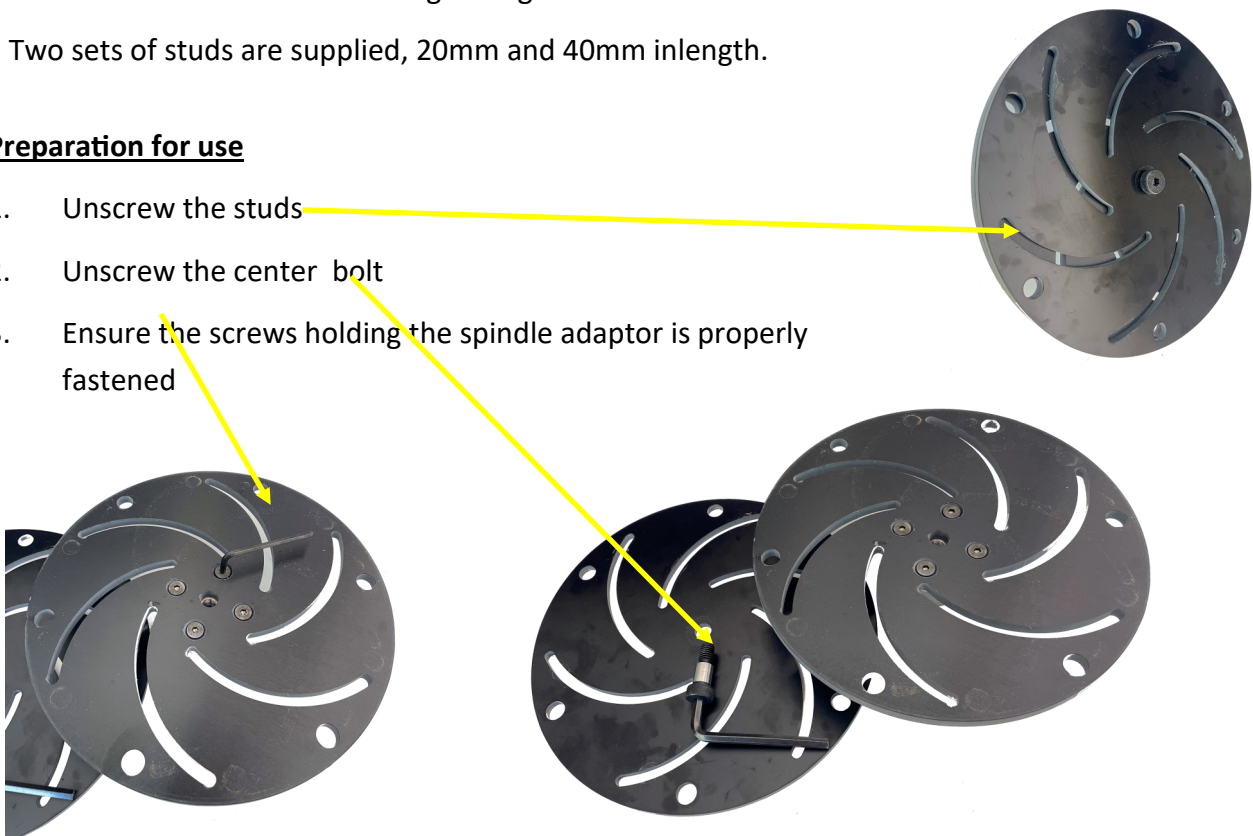
- External chucking: 95-330mm
- Internal chucking: 65-300mm
- Fits on lathes of 16" swing or larger



Two sets of studs are supplied, 20mm and 40mm inlength.

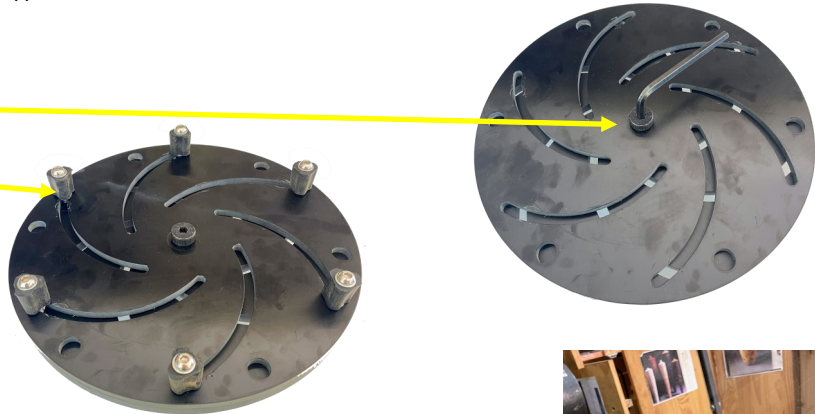
Preparation for use

1. Unscrew the studs
2. Unscrew the center bolt
3. Ensure the screws holding the spindle adaptor is properly fastened



Preparation for use (Continued)

3. Fix the center bolt securely
4. Fit the required studs



Using on the lathe

1. Loosten the wingnuts at the back
2. Mount the bowl supported by the tailstock
3. Turn the plates by using the fingerholes until the studs are against the bowl
4. Fasten the wingnuts at the back
5. Securely fasten the studs with an Allan Key from the front. This will twist the rubber of the triangular stud to ensure a firm hold of the bowl.



Finishing the foot of the bowl

1. Keep the tailstock in for support
2. Take light cuts with a sharp chisel
3. Cut towards the tailstock
4. A light finishing cut can be made across the foot
5. Continue slowly until a small support piece is left, cut off by hand and sand.



With the tailstock removed, decoration can be done on the bottom of the bowl as long as you push towards the headstock

