



Installation Guide & User's Manual

Contact Us

Please feel free to contact us with any questions, comments or concerns.

Power Pux Inc.
6233 Waterloo Ave.
Cocoa, FL 32927

Phone: (321) 208-4590
Email: info@pwrpux.com
Web: pwrpux.com



Patent Pending All Rights Reserved

Power Pux Inc.
6233 Waterloo Ave.
Cocoa, FL 32927



PATENT PENDING ALL RIGHTS RESERVED

Power Pux

The World's First Power Supplied Trolling Motor Quick Release Bracket

What you may need

1. 8 Gauge insulated Wire. (Enough to reach from the batteries to the bow Puck)
2. Your own stainless hardware for mounting the Puck to the deck. (Style depends on the mounting method that you choose based on the boat design and composition.)
3. BoatLife LifeSeal Caulking
4. Acetone
5. Clean Rags
6. Lead Pencil
7. Wire cutters
8. Wire Crimping Tool
9. Heat gun or small Butane Torch
10. 13/64" Drill Bit
11. 3/4" inch Hole Saw or Spade Bit

NOTE: Some boat designs may require a Fish Tape or similar device to pull wires through inaccessible compartments.



LIMITED THREE YEAR WARRANTY

Please log into www.pwrpux.com to activate your Warranty

POWER PUX LIMITED THREE-YEAR WARRANTY ON THE ENTIRE PRODUCT

Power Pux, Inc. extends the following limited warranty to the original retail purchaser only. Warranty coverage is not transferable.

Power Pux Limited Three-Year Warranty on the Entire Product warrants to the original retail purchaser only that the purchaser's new Power Pux accessory will be materially free from defects in materials and workmanship appearing within one (3) years after the date of purchase. Power Pux will (at its option) either repair or replace, free of charge, any parts found by Power Pux to be defective during the term of this warranty. Such repair, or replacement shall be the sole and exclusive liability of Power Pux and the sole and exclusive remedy of the purchaser for breach of this warranty.

EXCLUSIONS AND LIMITATIONS

This limited warranty does not apply to products that have been used commercially or for rental purposes. This limited warranty does not cover normal wear and tear, blemishes that do not affect the operation of the product, or damage caused by accidents, abuse, alteration, modification, shipping damages, acts of God, negligence of the user or misuse, improper or insufficient care or maintenance. **DAMAGE CAUSED BY THE USE OF OTHER REPLACEMENT PARTS NOT MEETING THE DESIGN SPECIFICATIONS OF THE ORIGINAL PARTS WILL NOT BE COVERED BY THIS LIMITED WARRANTY.** The cost of normal maintenance or replacement parts which are not in breach of the limited warranty are the responsibility of the purchaser. Prior to using products, the purchaser shall determine the suitability of the products for the intended use and assumes all related risk and liability. Any assistance Power Pux provides to or procures for the purchaser outside the terms, limitations or exclusions of this limited warranty will not constitute a waiver of the terms, limitations or exclusions, nor will such assistance extend or revive the warranty. Power Pux will not reimburse the purchaser for any expenses incurred by the purchaser in repairing, correcting or replacing any defective products or parts, except those incurred with Power Pux prior written permission. **Power Pux AGGREGATE LIABILITY WITH RESPECT TO COVERED PRODUCTS IS LIMITED TO AN AMOUNT EQUAL TO THE PURCHASER'S ORIGINAL PURCHASE PRICE PAID FOR SUCH PRODUCT.**

HOW TO OBTAIN WARRANTY SERVICE To obtain warranty service in the U.S., the product believed to be defective, and proof of original purchase (including the date of purchase), must be presented to a Power Pux Authorized Service Center or to Power Pux factory service center in Cocoa FL. Any charges incurred for service calls, transportation or shipping/freight to/from the Authorized Service Center or factory, labor to haul out, remove, re-install or re-rig products removed for warranty service, or any other similar items are the sole and exclusive responsibility of the purchaser. Products purchased outside of the U.S. must be returned prepaid with proof of purchase (including the date of purchase and serial number) to any Authorized Power Pux Service Center in the country of purchase. Warranty service can be arranged by contacting a Power Pux Authorized Service Center or by contacting the factory by email infp@pwrpux.com. Products repaired or replaced will be warranted for the remainder of the original warranty period [or for 90 days from the date of repair or replacement, whichever is longer]. For any product that is returned for warranty service that Power Pux finds to be not covered by or not in breach of this limited warranty, there will be a billing for services rendered at the prevailing posted labor rate and for a minimum of at least one hour.

NOTE: Do not return your Power Pux product to your retailer. Your retailer is not authorized to repair or replace products.

THERE ARE NO EXPRESS WARRANTIES OTHER THAN THESE LIMITED WARRANTIES. IN NO EVENT SHALL ANY IMPLIED WARRANTIES INCLUDING ANY IMPLIED WARRANTIES OF MERCHANTABILITY OR FITNESS FOR PARTICULAR PURPOSE, EXTEND BEYOND THE DURATION OF THE RELEVANT EXPRESS LIMITED WARRANTY. IN NO EVENT SHALL POWER PUX BE LIABLE FOR PUNITIVE, INDIRECT, INCIDENTAL, CONSEQUENTIAL OR SPECIAL DAMAGES. Without limiting the foregoing, Power Pux assumes no responsibility for loss of use of product, loss of time, inconvenience or other damage. **HOW DOES STATE LAW APPLY?** Some states do not allow limitations on how long an implied warranty lasts or the exclusion or limitation of incidental or consequential damages, so the above limitations and/or exclusions may not apply to you. This warranty gives you specific legal rights and you may also have other legal rights which vary from state to state.

Power Pux

The World's First Power Supplied Trolling Motor Quick Release Bracket



Maintenance:

The electrical plug connectors come pretreated with Marine Grade Corrosion X HD Corrosion Inhibitor for corrosion resistance.

Please check these connections often and reapply Corrosion X HD Corrosion Inhibitor as needed for ultimate extended performance.

NOTE: Corrosion X HD Brand corrosion inhibitor allows you to shoot the aerosol deep into the plug for excellent protection piece of mind.

Installation Instructions

Thank you for your recent purchase of Power Pux, the World's first Power Supplied trolling motor quick release Bracket.

Now let's get started assembling this to your trolling motor and get it mounted on your boat.

In the box, you will find the full kit including the hardware needed to secure the bracket to your trolling motor, (2) red and (2) black heat shrink tubing, a theft deterrent padlock and a gray rubber end cap to cover and protect the plug on your deck puck when not in use.

You will need to supply your own hardware to mount the puck to your deck. The length and style of that hardware will depend on the thickness and material type of your deck and/or whether you will be using backing plates, washers or simply tapping into a solid material.

Please note: The puck may not be removable until the bracket is firmly attached to your trolling motor base. Please perform these following steps in the order that they are written.

1. First, locate the hardware package and identify the (6) - 1/4 x 20 Flat Head machine threaded screws and Nylock nuts.
2. Next, remove the side panels of your trolling motor base and set them to the side.
3. Now, align the Power Pux bracket with the pre drilled holes in the trolling motor base. Be sure the puck wires are exiting down and the wire exit hole in the Power Pux bracket is facing the rear of the trolling motor base. This is where you will connect the wires from the trolling motor to the Power Pux Bracket. **See Fig 1 page 7.**

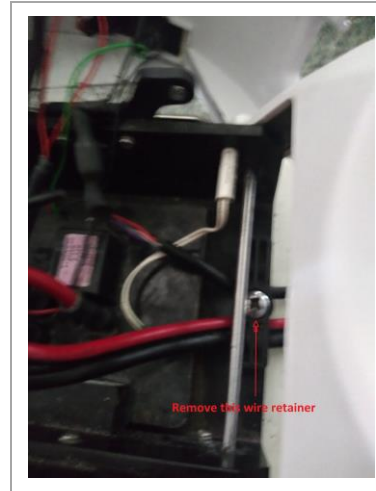
Illustrations

4. Insert the six Flat Head screws into the countersunk holes in the bottom of the bracket and secure them firmly to the trolling motor base using the six Nylock nuts. (Included washers are optional)
**** NOTE: Make sure the screw heads are countersunk to avoid scratching your deck ****
5. Using firm pressure, remove the Stainless Power Pux locking pin.
6. You can now remove the puck from the bracket by sliding it backwards. **Use the Locking Pin to pull the Puck by inserting it into the aft two puck mounting holes.**

You are now ready to install the Puck

7. Place the entire trolling motor assembly on the deck in your desired location. Deploy the trolling motor to ensure the shaft clears the rub rail according to the trolling motor manufacturer's specifications. Mark the location of the Power Pux Quick Release Bracket with a lead pencil on your deck once you are satisfied with the mounting location.
Note: Be sure to check for obstacles on the underside of the deck before drilling any holes.
8. Place the provided template within the pencil lines on your deck and mark the (4) mounting holes and the $\frac{3}{4}$ " inch wire hole with a lead pencil.
9. Drill the (4) $\frac{1}{4}$ " inch mounting holes.
NOTE: If you have a hard solid material laminated into your deck, Use a $\frac{1}{4}$ "-20 Tap kit and use machined 1/4x20 Screws to secure the puck. need for backing washers, nuts or a backing plate.
10. Drill the wire hole using a $\frac{3}{4}$ " inch hole saw or spade bit. The spade bit works best when drilling through hard Phenolic board materials.
11. Determine the best wire chase option from your batteries and run your 8 gauge wires thru the wire hole in your deck.

Figure 3



Remove Wire Retainer Screw.

Figure 4



Accessory Foot Pedal Plug Tucked inside housing with other wiring.

Illustrations

Figure 1



Wires exiting out aft end.

Figure 2



Squeeze tabs to remove housing

Note: A 60 amp surge protection breaker is highly recommended to be used in-line with the red power wire between the batteries and the trolling motor puck. Absence of a 60 amp breaker may void your warranties.

12. Cut the exposed wires from the batteries to the desired length and strip the wire insulator on the ends to expose 3/8" of an inch of bare wire.
13. Slide one of the provided red and one of the black heat shrink tubing over the wires first and then insert and crimp the wires (Red to Red & Black to Black) together inside the wire connectors already attached to the deck puck plug wires. Slide the heat shrink jackets over the butt connectors and center so that the heat shrink is covering equal lengths of the wire insulation on each end of the connectors. Using a heat gun or small butane torch, heat the heat shrink tubing until visibly waterproof around the wires and connectors.
14. Apply an ample amount of BoatLife LifeSeal caulking around the wire hole, all (4) screw holes and inside the entire parameter of the puck to eliminate water intrusion.
15. Secure the puck to the deck using your chosen hardware and attachment method. **Be sure the power plug is facing aft.**
16. Clean all excess Sealant from around the parameter of the puck using Acetone or similar cleaning solvent.
17. Slide your trolling motor onto the puck in a forward motion, insert the locking pin and padlock. **Please see notes about padlock use on Page 6.**

Now it's Time to connect the trolling motor to the power plug.

**** PLEASE ENSURE THE BATTERY SWITCH IS TURNED OFF
AND/OR DISCONNECT THE BATTERIES BEFORE FOLLOWING THE
NEXT STEPS****

18. Deploy the trolling motor to provide access to the trolling motor housing.
19. Now lift up while squeezing the side locking/release tabs on the trolling motor housing (cover) and remove it to expose the motherboard and circuit wiring. **See Fig 2. page 7**

NOTE: There will be some small wires attached to the housing for the indicator lights. Be very careful and lay the housing (cover) to the side.
20. Remove the black plastic wire retainer that secures the trolling motor wires and the accessory foot pedal cable. **See Fig 3 page 8.**
21. Measure and cut the trolling motor wires outside of the trolling motor housing so that 3" or more inches of wire are exposed, Separate the black and red bonded wires by pulling them apart approximately 3" inches and then strip the wire insulator on the ends to expose 3/8" of an inch of bare wire
22. Slide the provided red and black heat shrink tubing over the wires first and then insert and crimp the wires (Red to Red & Black to Black) together inside the wire connectors already attached to the plug wires. Slide the heat shrink jackets over the butt connectors and center so that the heat shrink is covering equal lengths of the wire insulation on each end of the connectors. Using a heat gun or small butane torch, heat the heat shrink jackets until visibly waterproof around the wires and connectors.

23. Pull all the excess wire slack back into the Trolling motor base where it will be bundled under the trolling motor housing (Cover).

NOTE: you can also run the **Foot Pedal Accessory** cord into the housing as well making a much cleaner look. **See Fig 4 page 8**

24. Flip the black plastic wire retainer upside-down with the scalloped wire grooves facing upward and reinstall it using the longer 1" inch ¼-20 screw supplied in the hardware package.

*****WARNING*****

: DO NOT OVER TIGHTEN THE RETAINER OR DAMAGE TO THE WIRE INSULATION COULD OCCUR. RETAINER SHOULD BE LOOSE ENOUGH FOR WIRES TO MOVE FREELY WHILE PREVENTING THE HEAT SHRINK JACKETS FROM PASSING THROUGH IN THE EVENT THEY ARE TUGGED. You can discard the original ½" inch retainer screw or save it in case you happen to lose one of the side panel screws as they are the same size.

Reassemble the housing and side panels of the trolling motor when complete.

25. Reconnect your batteries and Power Up your Trolling Motor.

****Notes about the use of the included Padlock.****

Use of the included padlock is encouraged when your vessel is unattended. It is not intended to hold up to excessive salt water exposure. Insure your Locking Pin is well secured when vessel is in operation without the padlock.

****Minn Kota Ulterra Users****

The included Padlock will not fit due to the extra width of the Minn Kota Ulterra Base housing. Use of a heavy duty plastic Cable Tie with a tensile strength of 75 Lbs. or higher is recommended to secure the locking pin.

You are ready to go fishing.

Turn your trolling motor on now and enjoy the benefits of a safe and cord free fishing deck.

Thank you again for choosing Power Pux