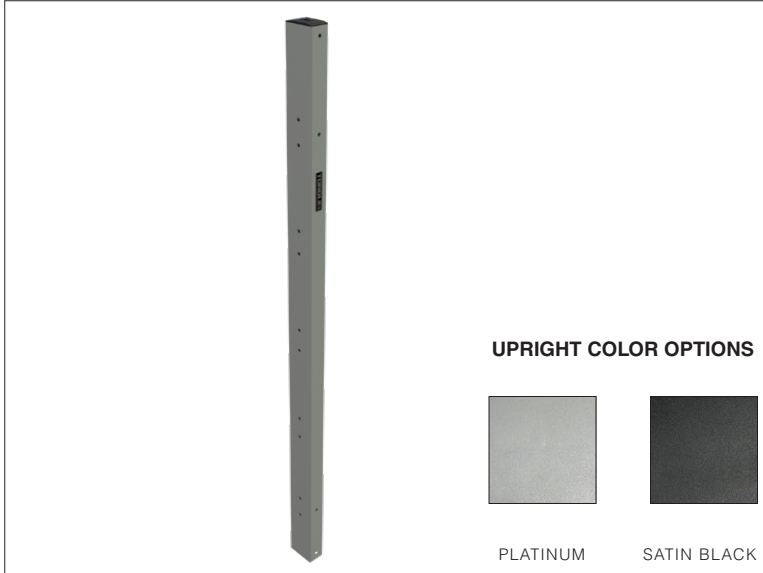




X-CREATE COMPONENTS FLYER

2023 X-CREATE COMPONENTS

UPRIGHT COMPONENT 1



Product Code: XCREATE-UC1

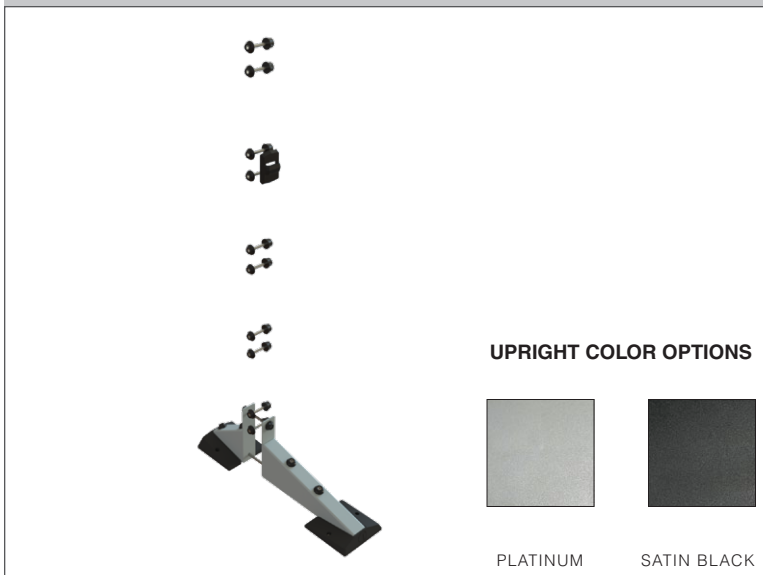
DESCRIPTION

- 3" x 5" 11 gauge construction provides a solid structure for all X-Create systems.
- High Gloss Platinum II or Satin Black powder coat finish.
- One of 2 components needed to construct a 7 foot, 8 foot or 2 sided 8 foot X-CREATE upright

COMPATIBILITY

| | |
|----------|---|
| X-Create | √ |
| X-Lab | |
| X-Rack | |
| X-Siege | |
| X-Cage | |
| Arsenal | |
| Armament | |

UPRIGHT COMPONENT 2, 7 FOOT (2.1 M) SINGLE-SIDED



Product Code: XCREATE-UC2-7SS

DESCRIPTION

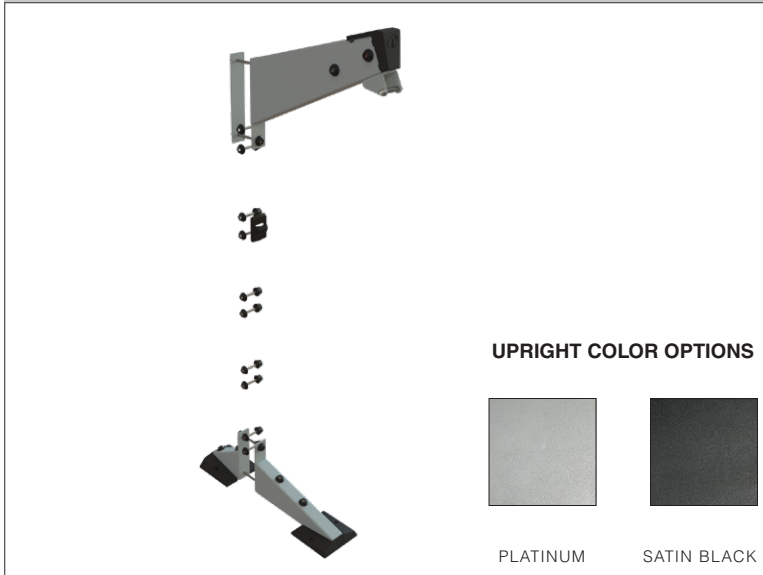
- High Gloss Platinum II or Satin Black powder coat finish.
- Includes rubber molded feet, bolt and nut covers, and magnetic suspension clip.
- Compatible with XCREATE-UC1 to create a 7 foot single sided upright

COMPATIBILITY

| | |
|----------|---|
| X-Create | √ |
| X-Lab | |
| X-Rack | |
| X-Siege | |
| X-Cage | |
| Arsenal | |
| Armament | |

2023 X-CREATE COMPONENTS

UPRIGHT COMPONENT 2, 8 FT (2.4 M) SINGLE-SIDED



Product Code: XCREATE-UC2-8SS

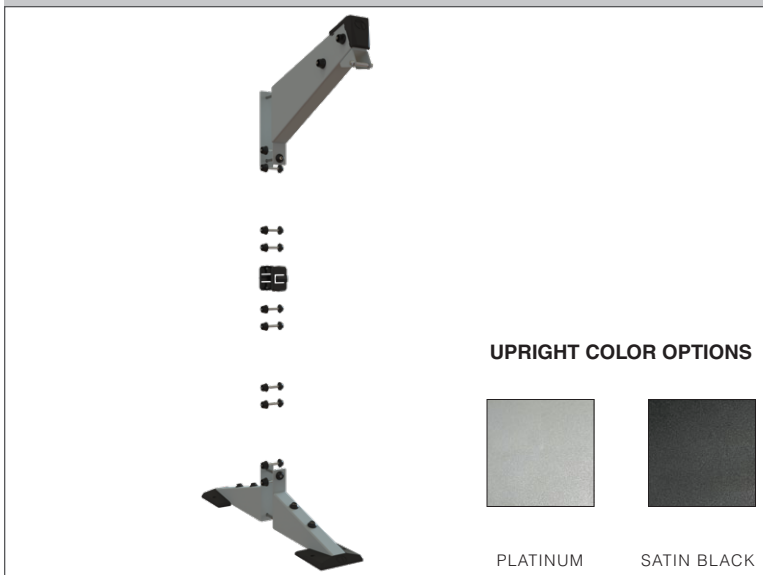
DESCRIPTION

- High Gloss Platinum II or Satin Black powder coat finish.
- Includes rubber molded feet, bolt and nut covers, and magnetic suspension clip.
- Compatible with XCREATE-UC1 to create an 8 foot single sided upright

COMPATIBILITY

| | |
|----------|---|
| X-Create | √ |
| X-Lab | |
| X-Rack | |
| X-Siege | |
| X-Cage | |
| Arsenal | |
| Armament | |

UPRIGHT COMPONENT 2, 8 FT (2.4 M) SINGLE-SIDED LONG BASE



Product Code: XCREATE-UC2-8SSLB

DESCRIPTION

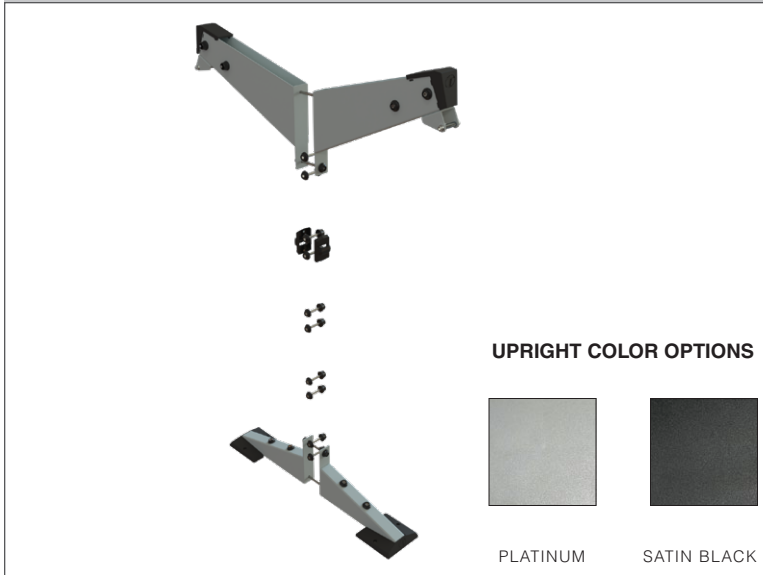
- High Gloss Platinum II or Satin Black powder coat finish.
- Includes rubber molded feet, bolt and nut covers, and magnetic suspension clip.
- Compatible with XCREATE-UC1 to create a 8 foot single-sided upright

COMPATIBILITY

| | |
|----------|---|
| X-Create | √ |
| X-Lab | |
| X-Rack | |
| X-Siege | |
| X-Cage | |
| Arsenal | |
| Armament | |

2023 X-CREATE COMPONENTS

UPRIGHT COMPONENT 2, 8 FT (2.4 M) DUAL-SIDED



Product Code: XCREATE-UC2-8DS

DESCRIPTION

- High Gloss Platinum II or Satin Black powder coat finish.
- Includes rubber molded feet, bolt and nut covers, and magnetic suspension clip.
- Compatible with XCREATE-UC1 to create a 8 foot double-sided upright

COMPATIBILITY

| | |
|----------|---|
| X-Create | √ |
| X-Lab | |
| X-Rack | |
| X-Siege | |
| X-Cage | |
| Arsenal | |
| Armament | |

4 FT (1.2 M) STORAGE RACK SIDE



Product Code: XCREATE-4SRS

DESCRIPTION

- 3"x 5" 11 gauge construction provides a solid structure X-Create systems and storage racks.
- High Gloss Platinum II or Satin Black powder coat finish.
- Includes rubber molded feet that hide floor anchoring holes.

COMPATIBILITY

| | |
|----------|---|
| X-Create | √ |
| X-Lab | |
| X-Rack | |
| X-Siege | |
| X-Cage | |
| Arsenal | |
| Armament | |

2023 X-CREATE COMPONENTS

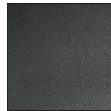
5 FT (1.5 M) UPRIGHT



UPRIGHT COLOR OPTIONS



PLATINUM



SATIN BLACK

Product Code: XCREATE-5U

DESCRIPTION

- 3" x 5" 11 gauge construction provides a solid structure for X-Create systems and storage racks.
- High Gloss Platinum II or Satin Black powder coat finish.
- Includes rubber molded feet that hide floor anchoring holes.

COMPATIBILITY

| | |
|----------|---|
| X-Create | √ |
| X-Lab | |
| X-Rack | |
| X-Siege | |
| X-Cage | |
| Arsenal | |
| Armament | |

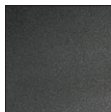
2-SIDED 5 FT (1.5M) UPRIGHT



UPRIGHT COLOR OPTIONS



PLATINUM



SATIN BLACK

Product Code: XCREATE-2S5U

DESCRIPTION

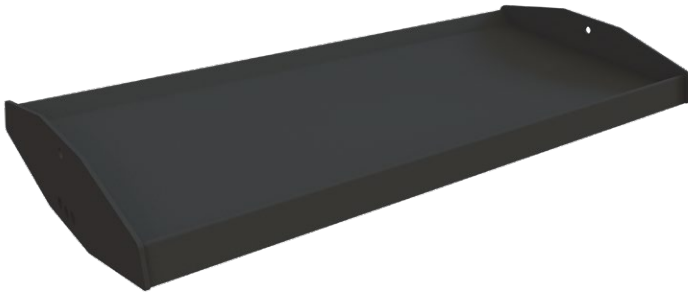
- 3" x 5" 11 gauge construction provides a solid structure X-Create systems and storage racks.
- High Gloss Platinum II or Satin Black powder coat finish.
- Includes rubber molded feet that hide floor anchoring holes.

COMPATIBILITY

| | |
|----------|---|
| X-Create | √ |
| X-Lab | |
| X-Rack | |
| X-Siege | |
| X-Cage | |
| Arsenal | |
| Armament | |

2023 X-CREATE COMPONENTS

4 FT (1.2 M) TRAY



Product Code: XCREATE-4TRAY

DESCRIPTION

- Over built to handle your heaviest accessories.
- Can be mounted at an angle for ergonomic placement and retrieval of dumbbells.
- Compatible with XCREATE-4MAT

COMPATIBILITY

| | |
|----------|---|
| X-Create | √ |
| X-Lab | |
| X-Rack | √ |
| X-Siege | |
| X-Cage | |
| Arsenal | |
| Armament | |

4 FT (1.8 M) TRAY MAT



Product Code: XCREATE-4MAT

DESCRIPTION

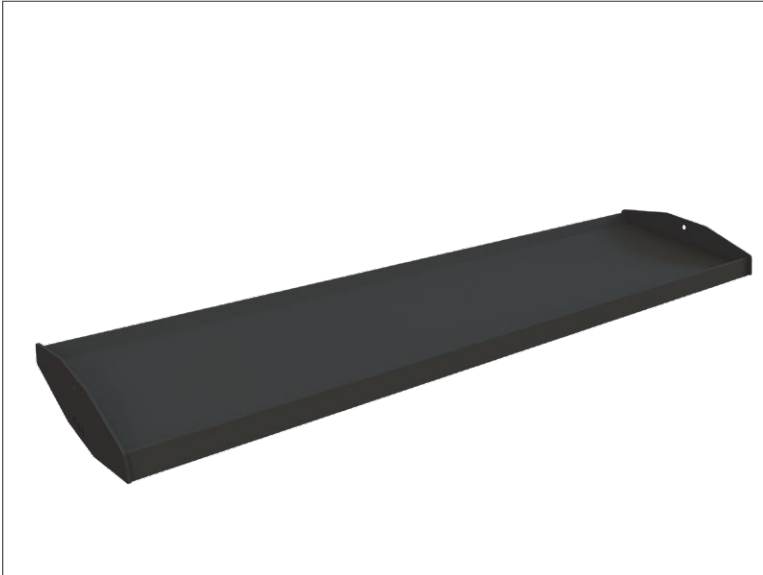
- Over built to handle your heaviest accessories.
- For use with XCREATE-4TRAY (qty 1) and XCREATE-8TRAY (qty 2)

COMPATIBILITY

| | |
|----------|---|
| X-Create | √ |
| X-Lab | |
| X-Rack | √ |
| X-Siege | |
| X-Cage | |
| Arsenal | |
| Armament | |

2023 X-CREATE COMPONENTS

6 FT (1.8 M) TRAY



Product Code: XCREATE-6TRAY

DESCRIPTION

- Over built to handle your heaviest accessories.
- Can be mounted at an angle for ergonomic placement and retrieval of dumbbells.
- Compatible with XCREATE-6MAT

COMPATIBILITY

| | |
|----------|---|
| X-Create | √ |
| X-Lab | |
| X-Rack | √ |
| X-Siege | |
| X-Cage | |
| Arsenal | |
| Armament | |

6 FT (1.8 M) MAT



Product Code: XCREATE-6MAT

DESCRIPTION

- Over built to handle your heaviest accessories.
- For use with XCREATE-6TRAY

COMPATIBILITY

| | |
|----------|---|
| X-Create | √ |
| X-Lab | |
| X-Rack | √ |
| X-Siege | |
| X-Cage | |
| Arsenal | |
| Armament | |

2023 X-CREATE COMPONENTS

8 FT (2.4 M) TRAY



Product Code: XCREATE-8TRAY

DESCRIPTION

- Over built to handle your heaviest accessories.
- Can be mounted at an angle for ergonomic placement and retrieval of dumbbells.
- Compatible with XCREATE-4MAT (2)

COMPATIBILITY

| | |
|----------|---|
| X-Create | √ |
| X-Lab | |
| X-Rack | |
| X-Siege | |
| X-Cage | |
| Arsenal | |
| Armament | |

4 FT (1.2 M) BALL STORAGE



Product Code: XCREATE-4BS

DESCRIPTION

- Minimalist rack for ball storage.
- Fully welded and sized to accept any Torque Wall, Medicine or Slam Ball.

COMPATIBILITY

| | |
|----------|---|
| X-Create | √ |
| X-Lab | |
| X-Rack | √ |
| X-Siege | |
| X-Cage | |
| Arsenal | |
| Armament | |

2023 X-CREATE COMPONENTS

6 FT (1.8 M) BALL STORAGE



Product Code: XCREATE-6BS

DESCRIPTION

- Next generation ball storage requires no adjustment.
- Compatible with Torque's smallest medicine and slam balls up to our larger diameter stability balls.

COMPATIBILITY

| | |
|----------|---|
| X-Create | √ |
| X-Lab | |
| X-Rack | √ |
| X-Siege | |
| X-Cage | |
| Arsenal | |
| Armament | |

6 FT (1.8 M) UNIVERSAL BALL STORAGE



Product Code: XCREATE-6UBS

DESCRIPTION

- Next generation ball storage requires no adjustment.
- Compatible with Torque's smallest medicine and slam balls up to our stability balls.
- Includes holes for peg kit to add hanging storage

COMPATIBILITY

| | |
|----------|---|
| X-Create | √ |
| X-Lab | |
| X-Rack | √ |
| X-Siege | |
| X-Cage | |
| Arsenal | |
| Armament | |

2023 X-CREATE COMPONENTS

4 FT (1.2 M) BUMPER BOOKSHELF STORAGE



Product Code: XCREATE-4BBS

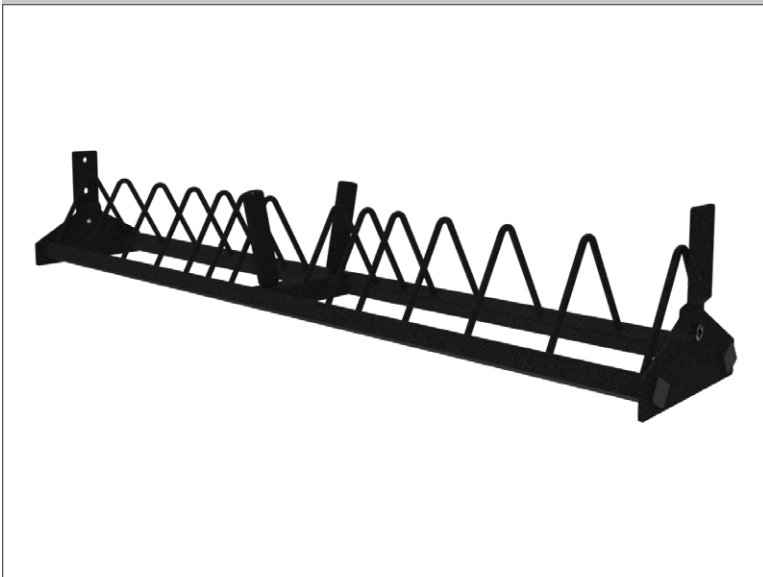
DESCRIPTION

- Maximizes bumper plate storage.
- Holds smaller weights on vertical post and 10 lb - 55 lb bumpers in vertical dividers.

COMPATIBILITY

| | |
|----------|---|
| X-Create | √ |
| X-Lab | |
| X-Rack | √ |
| X-Siege | |
| X-Cage | |
| Arsenal | |
| Armament | |

6 FT (1.8 M) BUMPER BOOKSHELF STORAGE



Product Code: XCREATE-6BBS

DESCRIPTION

- Maximizes bumper plate storage.
- Holds smaller weights on vertical posts and 10 lb - 55 lb bumpers in vertical dividers.

COMPATIBILITY

| | |
|----------|---|
| X-Create | √ |
| X-Lab | |
| X-Rack | √ |
| X-Siege | |
| X-Cage | |
| Arsenal | |
| Armament | |

2023 X-CREATE COMPONENTS

4 FT (1.2 M) MONKEY BAR CROSS



Product Code: XCREATE-4MBX

DESCRIPTION

- 4 foot (1.2 m) rectangular cross used in X-Create Bridge configurations.
- Combined with the XCREATE-6MBX, allows for bridge span increments of 2 feet (.61 m)
- Textured storm grey powder coat paint powder coat finish.
- Built in Functional bar

COMPATIBILITY

| | |
|----------|---|
| X-Create | √ |
| X-Lab | |
| X-Rack | |
| X-Siege | |
| X-Cage | |
| Arsenal | |
| Armament | |

6 FT (1.8 M) MONKEY BAR CROSS



Product Code: XCREATE-6MBX

DESCRIPTION

- 6 foot (1.8 m) rectangular cross used in X-Create Bridge configurations.
- Combined with the XCREATE-4MBX, allows for bridge span increments of 2 feet (.61 m)
- Textured storm grey powder coat paint powder coat finish.
- Built in Functional bar

COMPATIBILITY

| | |
|----------|---|
| X-Create | √ |
| X-Lab | |
| X-Rack | |
| X-Siege | |
| X-Cage | |
| Arsenal | |
| Armament | |

2023 X-CREATE COMPONENTS

4 FT (1.2 M) MULTI-GRIP CROSS



Product Code: XCREATE-4MGX

DESCRIPTION

- The X-Create Multi-Grip Cross can be substituted for the standard Single Cross on any X-Create System.
- The fully welded cross includes four ergonomic solid steel 1.25 in (32 mm) grip locations and a "fat" 2 in (50 mm) straight bar to develop grip strength.

COMPATIBILITY

| | |
|----------|---|
| X-Create | √ |
| X-Lab | |
| X-Rack | |
| X-Siege | |
| X-Cage | |
| Arsenal | |
| Armament | |

4 FT (1.2 M) SINGLE CROSS



Product Code: XCREATE-4SX

DESCRIPTION

- 1.25 inch diameter pull-up bar featuring "thru-plate" construction.
- Textured paint provides sure grip.
- Standard cross included with most X-Create Base Systems.

COMPATIBILITY

| | |
|----------|---|
| X-Create | √ |
| X-Lab | |
| X-Rack | |
| X-Siege | |
| X-Cage | |
| Arsenal | |
| Armament | |

2023 X-CREATE COMPONENTS

6 FT (1.8 M) SINGLE CROSS



Product code: XCREATE-6SX

DESCRIPTION

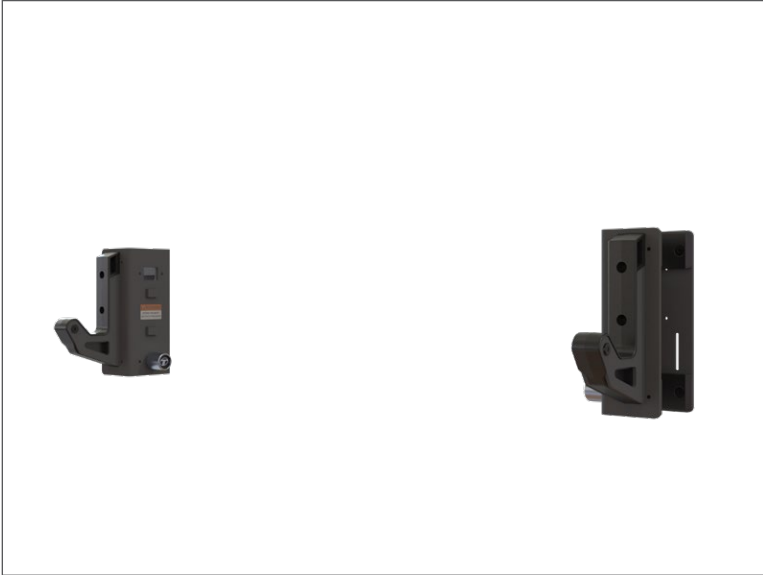
- Connects to X-Create 8 ft (2.4 m) uprights.
- Use with X-Create to create 6 feet (1.8 M) spacing between lifting stations with or without the addition of 6 foot trays, universal ball storage, or bumper bookshelf storage.

COMPATIBILITY

| | |
|----------|---|
| X-Create | √ |
| X-Lab | |
| X-Rack | |
| X-Siege | |
| X-Cage | |
| Arsenal | |
| Armament | |

2023 X-CREATE COMPONENTS

BAR SUPPORTS (2 PIECES - PAIR)



Product code: BS

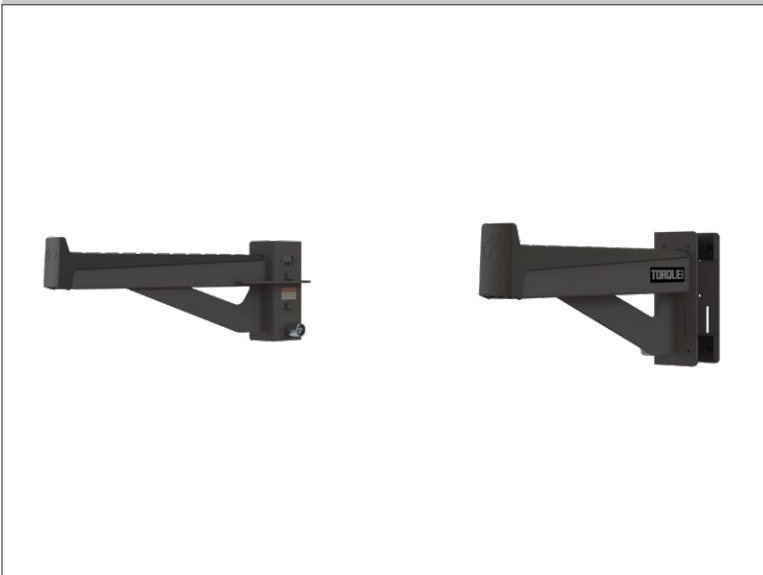
DESCRIPTION

- Included with XCREATE-8OLS.
- Polyurethane wear guards protect uprights and Olympic Bars.
- 850 lb (385 kg) maximum training weight.
- Aluminum knob spring pins prevent disengagement with the uprights.

COMPATIBILITY

| | |
|----------|---|
| X-Create | √ |
| X-Lab | |
| X-Rack | √ |
| X-Siege | √ |
| X-Cage | √ |
| Arsenal | √ |
| Armament | √ |

BAR CATCHES (2 PIECES - PAIR)



Product code: BC

DESCRIPTION

- Sold as a pair.
- Polyurethane wear guards protect uprights and Olympic Bars.
- 850 lb (385 kg) maximum training weight.
- Compatible with X-Create, X-Rack, X-Siege, X-Cage, Arsenal, and Armament.

COMPATIBILITY

| | |
|----------|---|
| X-Create | √ |
| X-Lab | |
| X-Rack | √ |
| X-Siege | √ |
| X-Cage | √ |
| Arsenal | √ |
| Armament | √ |

2023 X-CREATE COMPONENTS

DOUBLE PLAY



Product Code: DP

DESCRIPTION

- Attaches to XCREATE-8OLS Uprights.
- Provides vertical storage location for Olympic Bars.
- Doubles as a battle rope anchor.

COMPATIBILITY

| | |
|----------|---|
| X-Create | √ |
| X-Lab | √ |
| X-Rack | √ |
| X-Siege | |
| X-Cage | |
| Arsenal | √ |
| Armament | √ |

ROCK CLIMBING KIT (2 PIECES-PAIR)



Product code: XRACK-RCK

DESCRIPTION

- Sold as a left and right pair.
- Mounts to monkey bar crosses on X-Create Bridge Systems to provide rock grip locations.
- Textured molded surface provides sure grip.

COMPATIBILITY

| | |
|----------|---|
| X-Create | √ |
| X-Lab | |
| X-Rack | √ |
| X-Siege | √ |
| X-Cage | √ |
| Arsenal | |
| Armament | √ |

2023 X-CREATE COMPONENTS

3-DIMENSIONAL SWIVEL WITH MOUNT



Product Code: XCREATE-3DSM

DESCRIPTION

- Connects to X-Create Bridge System Monkey Bar Crosses and to the X-Create Attachment Extension to elevate and extend out heavy bags.
- Allows heavy bags to swivel and rotate smoothly on bronze oil impregnated bearings.

COMPATIBILITY

| | |
|----------|---|
| X-Create | √ |
| X-Lab | |
| X-Rack | √ |
| X-Siege | √ |
| X-Cage | |
| Arsenal | |
| Armament | |

3-DIMENSIONAL SWIVEL



Product Code: XCREATE-3DS

DESCRIPTION

- Connects to X-Create 8 foot (2.4 M) uprights and the X-Create Top Boom Extension.
- Allows heavy bags to swivel and rotate smoothly on bronze oil impregnated bearings.
- Note: only use on uprights that do not have trays attached to them.

COMPATIBILITY

| | |
|----------|---|
| X-Create | √ |
| X-Lab | |
| X-Rack | |
| X-Siege | |
| X-Cage | |
| Arsenal | |
| Armament | |

2023 X-CREATE COMPONENTS

8 FT (2.4 M) OLYMPIC LIFTING UPRIGHT (2 PCS - PAIR)



Product Code: XCREATE-8OLU

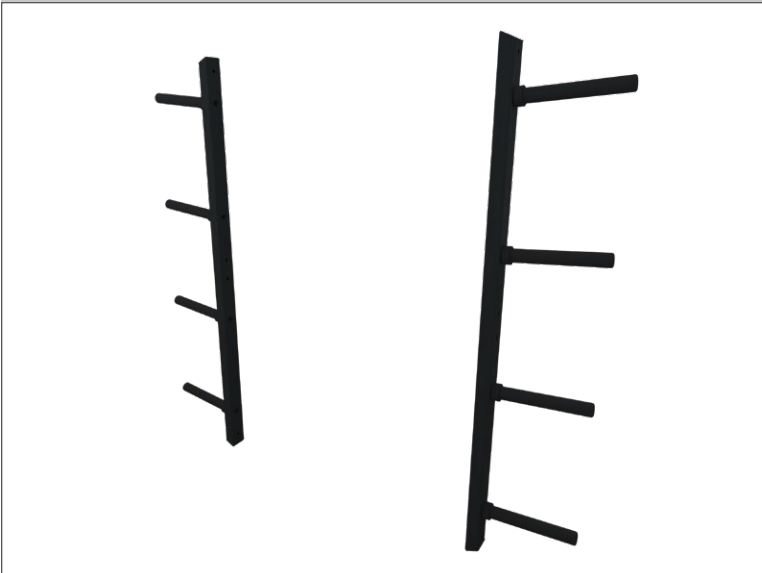
DESCRIPTION

- Heavy gauge 3 inch x 3 inch uprights attach to 8 foot and 2-sided 8 foot pairs of X-Create uprights creating a lifting module.
- Features laser cut numbered uprights
- Compatible with X-Rack Bar Supports, Bar Catches, and Dip/Step/Attachment anchor.

COMPATIBILITY

| | |
|----------|---|
| X-Create | √ |
| X-Lab | |
| X-Rack | |
| X-Siege | |
| X-Cage | |
| Arsenal | |
| Armament | |

8 FT (2.4 M) UPIGHT VERTICAL WEIGHT STORAGE (QTY 2)



Product Code: XCREATE-8UVWS

DESCRIPTION

- Mounts to the side of X-Create 7 and 8 foot uprights to provide weight storage.
- Eight solid steel weight pegs with nylon covers and rubber bumpers protect weight plates.
- Each 11.25 in (286 mm) long peg holds up to 4 Torque 45 lb bumper plates or 6 Torque 45 lb grip plates. Also available as single.

COMPATIBILITY

| | |
|----------|---|
| X-Create | √ |
| X-Lab | |
| X-Rack | √ |
| X-Siege | |
| X-Cage | |
| Arsenal | |
| Armament | |

2023 X-CREATE COMPONENTS

4 FT (1.2 M) SINGLE SIDE HOR. WEIGHT STORAGE



Product Code: XCREATE-4SSHWS

DESCRIPTION

- Standard as part of the X-Create Accessory and Weight Storage Module.
- Compatible with any X-Create System.
- Mounts between uprights and includes two nylon covered solid steel weight horns that are 11.25 in (286 mm) long.

COMPATIBILITY

| | |
|----------|---|
| X-Create | √ |
| X-Lab | |
| X-Rack | √ |
| X-Siege | |
| X-Cage | |
| Arsenal | |
| Armament | |

4 FT (1.2 M) STALL BARS



Product Code: XCREATE-4SB

DESCRIPTION

- (12) 1.25 in (32 mm) diameter rungs for targeted stretching, body weight and resistance training.
- Textured storm grey powder coat paint provides sure grip.

COMPATIBILITY

| | |
|----------|---|
| X-Create | √ |
| X-Lab | |
| X-Rack | √ |
| X-Siege | |
| X-Cage | |
| Arsenal | |
| Armament | |

2023 X-CREATE COMPONENTS

4 FT (1.2 M) BALL TARGET WALL PAD



Product Code: XCREATE-4BTWP

DESCRIPTION

- Adjustable, removable and stackable
- Heavy duty vinyl covered foam pad equipped with sound dampening hooks
- Attaches to XCREATE-4SB

COMPATIBILITY

| | |
|----------|---|
| X-Create | √ |
| X-Lab | |
| X-Rack | |
| X-Siege | |
| X-Cage | |
| Arsenal | |
| Armament | |

BALL & HANGING STORAGE EXTENSION



Product Code: XCREATE-BHSE

DESCRIPTION

- Add more storage to the ends of X-Create systems.
- Sized to hold a stability ball of any diameter.
- Adjustable pegs allow storage of hanging mats, resistance bands, handles and more.

COMPATIBILITY

| | |
|----------|---|
| X-Create | √ |
| X-Lab | |
| X-Rack | √ |
| X-Siege | |
| X-Cage | |
| Arsenal | |
| Armament | |

2023 X-CREATE COMPONENTS

VERTICAL DUMBBELL STORAGE - 4 PAIR



Product Code: XCREATE-VDS4

DESCRIPTION

- Attaches to both standard and 2-sided X-Create 5 foot - 8 foot uprights to either an empty module, a ball and hanging storage module or to the end uprights on a system.
- Holds four pairs of any size up to 55 lb dumbbells.
- Includes protective nylon edge protectors.

COMPATIBILITY

| | |
|----------|---|
| X-Create | √ |
| X-Lab | |
| X-Rack | √ |
| X-Siege | |
| X-Cage | |
| Arsenal | |
| Armament | |

VERTICAL DUMBBELL STORAGE - 5 PAIR



Product Code: XCREATE-VDS5

DESCRIPTION

- Attaches to both standard and 2-sided X-Create 5 foot - 8 foot uprights to either an empty module, a ball and hanging storage module or to the end uprights on a system.
- Holds five pairs of any size up to 30 lb dumbbells.
- Includes protective nylon edge protectors.

COMPATIBILITY

| | |
|----------|---|
| X-Create | √ |
| X-Lab | |
| X-Rack | √ |
| X-Siege | |
| X-Cage | |
| Arsenal | |
| Armament | |

2023 X-CREATE COMPONENTS

BALL TARGET



Product Code: XCREATE-BT

DESCRIPTION

- Upper Wall Ball Target attaches to X-Create 8 foot (2.4 M) Uprights and provides both a 9 foot (2.7 m) and 10 foot (3.0 m) target height.

COMPATIBILITY

| | |
|----------|---|
| X-Create | √ |
| X-Lab | |
| X-Rack | |
| X-Siege | |
| X-Cage | |
| Arsenal | |
| Armament | |

BRIDGE BALL TARGET



Product Code: XCREATE-BBT

DESCRIPTION

- Attaches to X-CREATE Bridge
- Provides both a 9 foot (2.7 m) and 10 foot (3.0 m) target height
- Welded, rigid construction with durable, textured powder coat

COMPATIBILITY

| | |
|----------|---|
| X-Create | √ |
| X-Lab | |
| X-Rack | |
| X-Siege | |
| X-Cage | |
| Arsenal | |
| Armament | |

2023 X-CREATE COMPONENTS

DOUBLE PLAY - BAR & PLATE STORAGE



Product Code: XCREATE-DP

DESCRIPTION

- Attaches to X-Create Upright Base to provide storage for Olympic bars and weight plates up to 16.5 in (42 cm) in diameter. (Fits most 25 lb weight plates)
- Solid weight horn shaft is covered with molded nylon cover and bumper to protect weight plates.

COMPATIBILITY

| | |
|----------|---|
| X-Create | √ |
| X-Lab | |
| X-Rack | |
| X-Siege | |
| X-Cage | |
| Arsenal | |
| Armament | |

MONKEY BAR CROSS EXTENSION (QTY 2)



Product Code: XCREATE-MBXE

DESCRIPTION

- Links X-Create Uprights to Monkey Bar Crosses in X-Create Bridge Systems.
- Textured storm grey powder coat paint powder coat finish.
- Sold as 2 pieces - pair.

COMPATIBILITY

| | |
|----------|---|
| X-Create | √ |
| X-Lab | |
| X-Rack | |
| X-Siege | |
| X-Cage | |
| Arsenal | |
| Armament | |

2023 X-CREATE COMPONENTS

DIP STEP ANCHOR (2 PIECES – PAIR)



Product Code: XDSA

DESCRIPTION

- Interlocks with X-Rack, X-Create, X-Siege & X-Cage Lifting Uprights for adjustable height dip movements.
- Also can be used as a Step-Up to reach pull-up or monkey bars.
- Gussets have openings to be used with resistance band for adjustable height anchors.

COMPATIBILITY

| | |
|----------|---|
| X-Create | √ |
| X-Lab | |
| X-Rack | √ |
| X-Siege | √ |
| X-Cage | √ |
| Arsenal | √ |
| Armament | √ |

RELENTLESS ROPE TRAINER



Product Code: XERT

DESCRIPTION

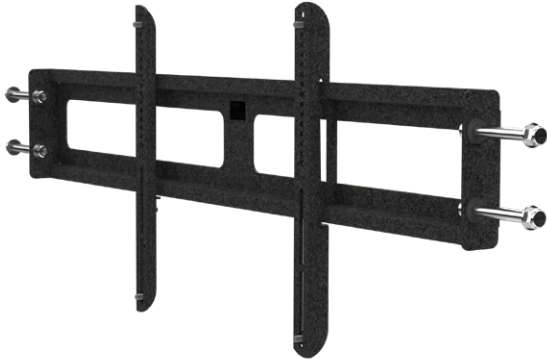
- Relentless Rope features a variable resistance magnet brake with four difficulty settings.
- Included brackets allow for mounting to almost all Torque systems.

COMPATIBILITY

| | |
|----------|---|
| X-Create | √ |
| X-Lab | √ |
| X-Rack | √ |
| X-Siege | √ |
| X-Cage | √ |
| Arsenal | √ |
| Armament | √ |

2023 X-CREATE COMPONENTS

4 FT (1.2 M) MONITOR MOUNT



Product code: XCREATE-4MM

DESCRIPTION

- Attaches to any X-CREATE 4 foot (1.2 M) module space
- Compatible with flat screen monitors up to 43 inches
- Standard VESA mount

COMPATIBILITY

| | |
|----------|---|
| X-Create | √ |
| X-Lab | |
| X-Rack | √ |
| X-Siege | |
| X-Cage | |
| Arsenal | |
| Armament | |

ATTACHMENT ANCHOR



Product Code: XLAB-AA

DESCRIPTION

- Required with XCREATE-AAD and XCREATE-AAPS
- Mounts to X-Lab and X-Create 5 foot - 8 foot uprights for use with the Dip and Plyo Step Attachments.
- Machined chrome plated pegs keep attachments secure and easy to attach and remove.

COMPATIBILITY

| | |
|----------|---|
| X-Create | √ |
| X-Lab | √ |
| X-Rack | √ |
| X-Siege | |
| X-Cage | |
| Arsenal | |
| Armament | |

2023 X-CREATE COMPONENTS

PLYO-STEP ATTACHMENT



Product code: XLAB-PS

DESCRIPTION

- Used in conjunction with the XCREATE-AA Attachment Anchor.
- The open design lends itself to visually guiding the attachment into place for easy attachments and adjustments and includes an integrated handle.

COMPATIBILITY

| | |
|----------|---|
| X-Create | √ |
| X-Lab | √ |
| X-Rack | √ |
| X-Siege | |
| X-Cage | |
| Arsenal | |
| Armament | |

DIP ATTACHMENT



Product code: XLAB-DA

DESCRIPTION

- Used in conjunction with the XCREATE-AA Attachment Anchor.
- The open design lends itself to visually guiding the attachment into place for easy attachments and adjustments and includes an integrated handle.

COMPATIBILITY

| | |
|----------|---|
| X-Create | √ |
| X-Lab | √ |
| X-Rack | √ |
| X-Siege | |
| X-Cage | |
| Arsenal | |
| Armament | |

2023 X-CREATE COMPONENTS

BATTLE ROPE ANCHOR



Product code: XRACK-BRA

DESCRIPTION

- Glass-reinforced molded nylon anchor includes rounded edges to prevent wear on ropes.
- Molded in steel inserts in mounting holes.
- Mounts to base of uprights on most X-Series Systems.

COMPATIBILITY

| | |
|----------|---|
| X-Create | √ |
| X-Lab | √ |
| X-Rack | √ |
| X-Siege | √ |
| X-Cage | |
| Arsenal | √ |
| Armament | √ |

HANGING STORAGE HOOK



Product Code: XCREATE-HSH

DESCRIPTION

- Large 8.5 inch (21.6 cm) long nylon molded hook stores battle ropes or other hanging accessories.
- Compatible with all X-Create systems as well as X-Rack and X-Siege systems that have Accessory or Weight Storage uprights.
- Pairs well with the XRACK-BRA battle rope anchor.

COMPATIBILITY

| | |
|----------|---|
| X-Create | √ |
| X-Lab | |
| X-Rack | √ |
| X-Siege | √ |
| X-Cage | |
| Arsenal | |
| Armament | |

2023 X-CREATE COMPONENTS

WEIGHT STORAGE NUMBERING KIT, 5-55 LB



Product Code: WSNK5-55

DESCRIPTION

- Molded caps snap over weight peg bolts to provide location indicators for bumper plates.
- Includes Change Plate, 5, 10, 15, 20, 25, 35, 45, 55 lb indicators
- Compatible with all X-Series products with weight pegs.

COMPATIBILITY

| | |
|----------|---|
| X-Create | √ |
| X-Lab | |
| X-Rack | √ |
| X-Siege | √ |
| X-Cage | √ |
| Arsenal | √ |
| Armament | √ |

HARDWARE COVER FINISH KIT - 18 BOLT HOLES



Product Code: XHCFK-18BH

DESCRIPTION

- The Nut Caps serve as a washer replacement and hide exposed bolt threads, protecting accessories from damage.
- The Socket Head Cap Screw Covers replace washers and upgrade the aesthetics of your system, giving the X-Create a more refined look.
- Kit includes 18 Nut and 18 Bolt covers.

COMPATIBILITY

| | |
|----------|---|
| X-Create | √ |
| X-Lab | √ |
| X-Rack | √ |
| X-Siege | √ |
| X-Cage | √ |
| Arsenal | √ |
| Armament | √ |

2023 X-CREATE COMPONENTS

TOP BOOM EXTENSION



Product Code: XCREATE-TBE

DESCRIPTION

- Mounts to the top of the 8 foot (2.4 m) uprights to extend pull-up bar further away from accessory trays.
- Can also be used to move 3D Swivel further out preventing damage to heavy bags from accessory trays.

COMPATIBILITY

| | |
|----------|---|
| X-Create | √ |
| X-Lab | |
| X-Rack | |
| X-Siege | |
| X-Cage | |
| Arsenal | |
| Armament | |

BOOM MOUNT, XERT



Product Code: XCREATE-BMXERT

DESCRIPTION

- Mounts to the top of the XCREATE-8U and XCREATE-2S8U.
- Enables the Relentless Rope Trainer and Relentless Ripper to be mounted to the front of an X-Create upright.

COMPATIBILITY

| | |
|----------|---|
| X-Create | √ |
| X-Lab | |
| X-Rack | |
| X-Siege | |
| X-Cage | |
| Arsenal | |
| Armament | |

2023 X-CREATE COMPONENTS

HORIZONTAL MOUNT GROUND ROTATIONAL TRAINER



Product Code: XHMGRT

DESCRIPTION

- Mounts to the base of X-Create Uprights, Arsenal and Armament and to the Lower Band Peg Attachment on X-Rack and X-Siege Systems.
- Provides rotational movements off the front of the stations saving floor space.
- Molded rubber bumper provides stationary storage location for pivot.

COMPATIBILITY

| | |
|----------|---|
| X-Create | √ |
| X-Lab | |
| X-Rack | √ |
| X-Siege | √ |
| X-Cage | |
| Arsenal | √ |
| Armament | √ |

ATTACHMENT EXTENSION



Product Code: XCREATE-AE

DESCRIPTION

- Mounts to 8 foot and 2-Sided 8 foot uprights to support an elevated 3DSM 3-Dimensional Sivel with mount for Heavy Bag Training or the XERT Relentless Rope Trainer
- Textured storm grey powder coat paint powder coat finish.

COMPATIBILITY

| | |
|----------|---|
| X-Create | √ |
| X-Lab | |
| X-Rack | |
| X-Siege | |
| X-Cage | |
| Arsenal | |
| Armament | |

2023 X-CREATE COMPONENTS

VERTICAL BARBELL SIDES - 5 BARBELLS (2 PCS - PAIR)



Product Code: XCREATE-VBS5

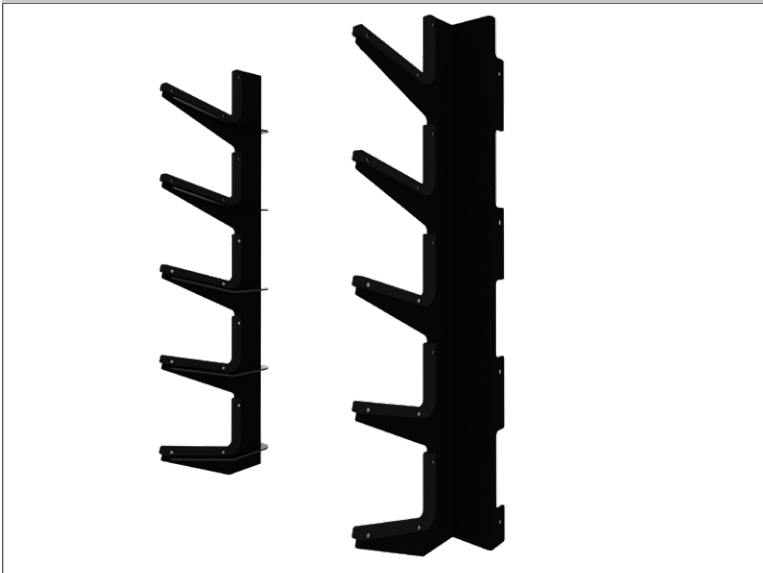
DESCRIPTION

- Mounts to X-Create 5 foot, 7 foot and 8 foot uprights to hold 5 straight or EZ curl barbells.
- Includes molded nylon guards to protect barbells and numbered labels.

COMPATIBILITY

| | |
|----------|---|
| X-Create | √ |
| X-Lab | |
| X-Rack | |
| X-Siege | |
| X-Cage | |
| Arsenal | |
| Armament | |

VERTICAL BARBELL SIDES - 10 BARBELLS (2 PCS - PAIR)



Product Code: XCREATE-VBS10

DESCRIPTION

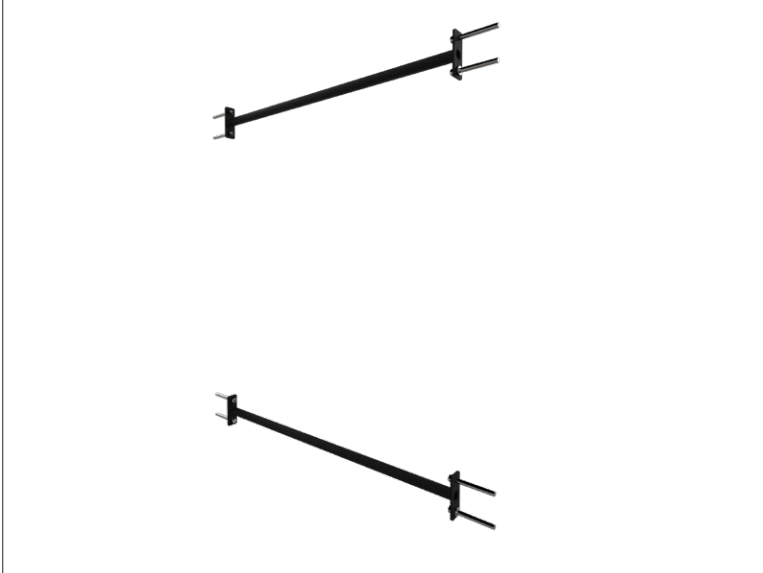
- Mounts to X-Create 5 foot, 7 foot and 8 foot uprights to hold 10 straight or EZ curl barbells.
- Each pair of hooks hold two barbells.
- Includes molded nylon guards to protect barbells and numbered labels.

COMPATIBILITY

| | |
|----------|---|
| X-Create | √ |
| X-Lab | |
| X-Rack | |
| X-Siege | |
| X-Cage | |
| Arsenal | |
| Armament | |

2023 X-CREATE COMPONENTS

VERTICAL BARBELL SIDE CONNECTOR (QTY 2)



Product Code: XCREATE-VBSC

DESCRIPTION

- Mounts between the 5 foot uprights of barbell racks or between any X-Create uprights to add stability.
- Textured storm grey powder coat paint powder coat finish.

COMPATIBILITY

| | |
|----------|---|
| X-Create | √ |
| X-Lab | |
| X-Rack | |
| X-Siege | |
| X-Cage | |
| Arsenal | |
| Armament | |

4 FT (1.2 M) WALL ANCHOR BRACKETS



Product Code: XCREATE-4WAB

DESCRIPTION

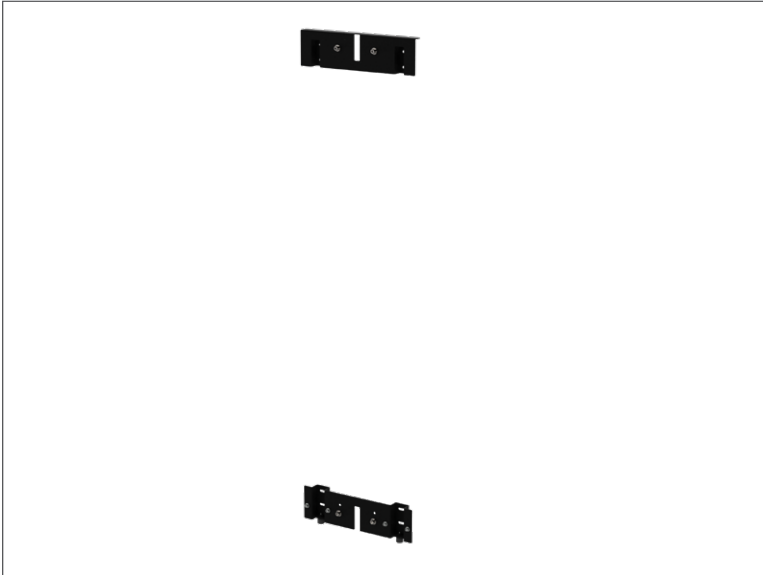
- Used to secure X-CREATE uprights to the wall rather than stabilizing by anchoring to the floor
- Can be fixed to wood studs with included hardware
- Compatible with 7 & 8 foot X-CREATE uprights

COMPATIBILITY

| | |
|----------|---|
| X-Create | √ |
| X-Lab | |
| X-Rack | |
| X-Siege | |
| X-Cage | |
| Arsenal | |
| Armament | |

2023 X-CREATE COMPONENTS

CABLE STATION WALL MOUNT



Product Code: XCREATE-CSWM

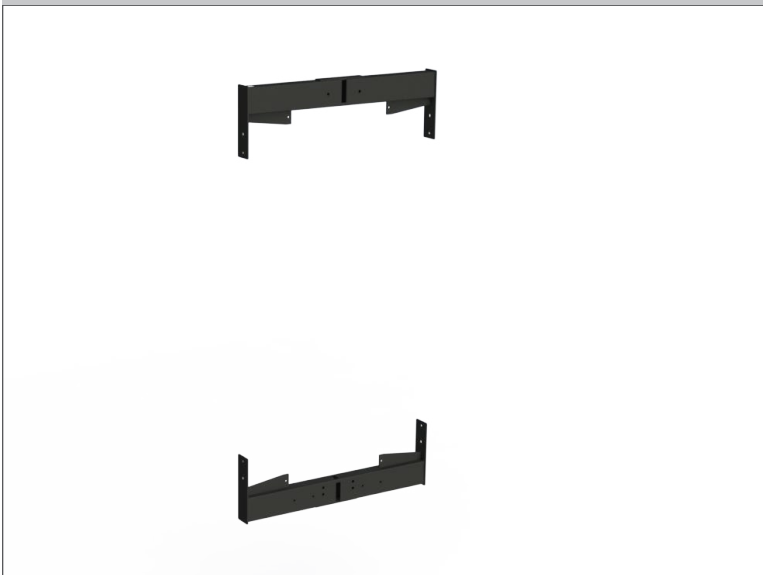
DESCRIPTION

- Brackets for anchoring the X-Create Cable Column, Seated Row and Lat Pulldown to a wall.
- Includes top and bottom bracket.
- Included with Wall Mount Packages.
- Anchoring hardware is not included

COMPATIBILITY

| | |
|----------|---|
| X-Create | √ |
| X-Lab | |
| X-Rack | |
| X-Siege | |
| X-Cage | |
| Arsenal | |
| Armament | |

4 FT (1.2 M) CABLE STATION CROSS



Product Code: XCREATE-4CSX

DESCRIPTION

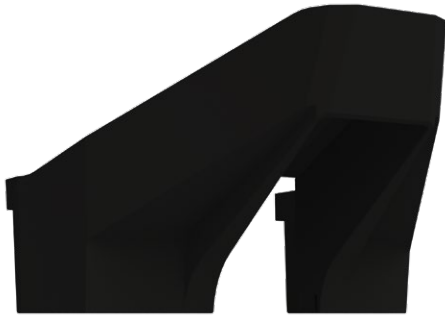
- Includes top and bottom cross members for attaching the X-Create Cable Column, Seated Row, and Lat Pulldown frames to a module space.
- Included with modules.
- If cable stations are orientated back to back in a module space, they share one of these components.

COMPATIBILITY

| | |
|----------|---|
| X-Create | √ |
| X-Lab | |
| X-Rack | |
| X-Siege | |
| X-Cage | |
| Arsenal | |
| Armament | |

2023 X-CREATE COMPONENTS

CABLE STATION TOP CAP



Product Code: XCREATE-CSTC

DESCRIPTION

- Injection molded top cap for the X-Create Cable Column, Seated Row, and Lat Pulldown Modules and Wall mounts.
- Included with all X-Create Cable Stations.

COMPATIBILITY

| | |
|----------|---|
| X-Create | √ |
| X-Lab | |
| X-Rack | |
| X-Siege | |
| X-Cage | |
| Arsenal | |
| Armament | |

CABLE STATION SHROUD - FRONT (2 PIECES - PAIR)



Product Code: XCREATE-CSSF

DESCRIPTION

- Front shroud pair for the X-Create Cable Column, Seated Row, and Lat Pulldown Modules and Wall mounts.
- Included with modules.
- Placards are included with the individual station frames and are attached after assembly.

COMPATIBILITY

| | |
|----------|---|
| X-Create | √ |
| X-Lab | |
| X-Rack | |
| X-Siege | |
| X-Cage | |
| Arsenal | |
| Armament | |

2023 X-CREATE COMPONENTS

CABLE COMPONENT



Product Code: XCREATE-CC

DESCRIPTION

- Frame assembly for the X-Create Cable Column Module and Wall Mount.
- Includes headplate, cable and accessories.

COMPATIBILITY

| | |
|----------|---|
| X-Create | √ |
| X-Lab | |
| X-Rack | |
| X-Siege | |
| X-Cage | |
| Arsenal | |
| Armament | |

LAT PULL DOWN



Product Code: XCREATE-LPD

DESCRIPTION

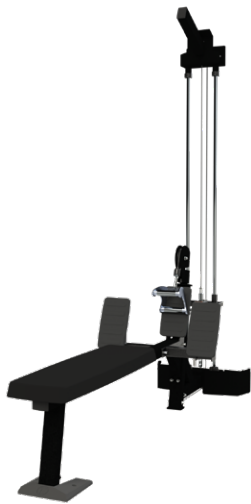
- Frame assembly for the X-Create Lat Pulldown Module and Wall Mount.
- Includes black pads, headplate, cable and aluminum lat bar.
- Adjustable knee hold-down.

COMPATIBILITY

| | |
|----------|---|
| X-Create | √ |
| X-Lab | |
| X-Rack | |
| X-Siege | |
| X-Cage | |
| Arsenal | |
| Armament | |

2023 X-CREATE COMPONENTS

SEATED ROW



Product Code: XCREATE-SR

DESCRIPTION

- Frame assembly for the X-Create Seated Row Module and Wall Mount.
- Includes black pad, headplate, cable and aluminum low row handle.
- Urethane molded foot placements and frame protector.

COMPATIBILITY

| | |
|----------|---|
| X-Create | √ |
| X-Lab | |
| X-Rack | |
| X-Siege | |
| X-Cage | |
| Arsenal | |
| Armament | |

CABLE STATION SHROUD - REAR



Product Code: XCREATE-CSSR

DESCRIPTION

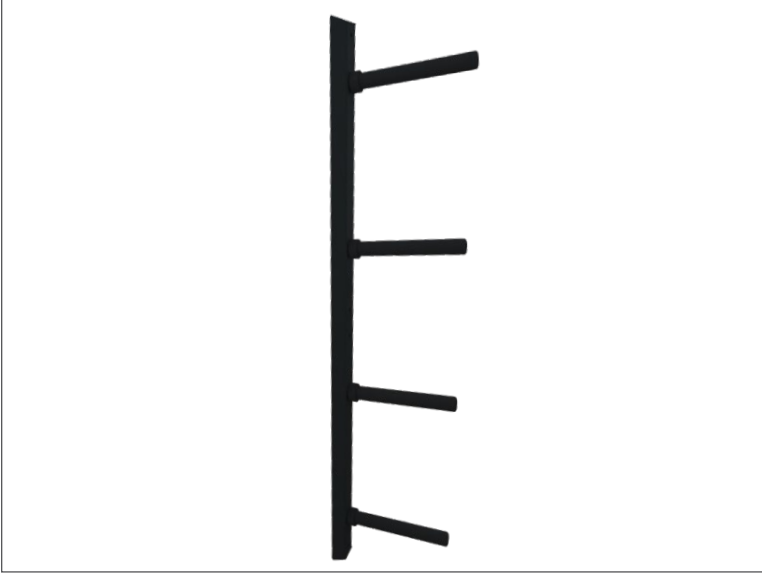
- Rear shroud option for X-Create Cable Column, Lat Pulldown and Seated Row Modules.
- Recommended for Two-sided X-Creates with cable stations only on one side or for X-Create Wall Systems that are not placed along a wall.

COMPATIBILITY

| | |
|----------|---|
| X-Create | √ |
| X-Lab | |
| X-Rack | |
| X-Siege | |
| X-Cage | |
| Arsenal | |
| Armament | |

2023 X-CREATE COMPONENTS

8 FT (2.4 M) UPRIGHT VERTICAL WEIGHT STORAGE, SINGLE



Product Code: XCREATE-8UVWSS

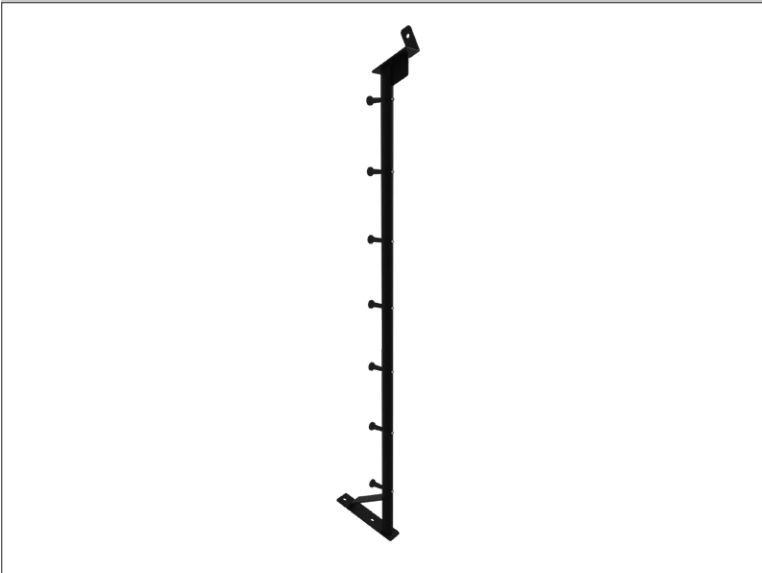
DESCRIPTION

- Mounts to the side of X-Create 8 foot standard and 2-sided uprights to provide weight storage.
- Four solid steel weight pegs with nylon covers and rubber bumpers protect weight plates.
- Each 11.25 in (286 mm) long peg holds up to 4 Torque 45 lb bumper plates or 6 Torque 45 lb grip plates.

COMPATIBILITY

| | |
|----------|---|
| X-Create | √ |
| X-Lab | |
| X-Rack | |
| X-Siege | |
| X-Cage | |
| Arsenal | |
| Armament | |

RESISTANCE BAND ANCHOR



Product Code: XCREATE-RBA

DESCRIPTION

- Attaches to both standard and 2-Sided 8 foot (2.4 M) X-Create uprights. Sold individually.
- Allows for use of power bands, rope training and battle ropes.
- Storm grey powder coat paint with molded nylon pegs.

COMPATIBILITY

| | |
|----------|---|
| X-Create | √ |
| X-Lab | |
| X-Rack | |
| X-Siege | |
| X-Cage | |
| Arsenal | |
| Armament | |

2023 X-CREATE COMPONENTS

UPRIGHT LOWER CROSS BRACE (2 PIECES-PAIR)



Product Code: XCREATE-ULCB

DESCRIPTION

- Sold as a pair, the Upright Lower Cross Brace can be attached to the end uprights to add lateral stability to any X-Create Wall or 2-Sided Center System.
- Creates a single or double heavy bag station when combined with an X-Create upright and a 3D Swivel.

COMPATIBILITY

| | |
|----------|---|
| X-Create | √ |
| X-Lab | |
| X-Rack | |
| X-Siege | |
| X-Cage | |
| Arsenal | |
| Armament | |