

Project :

Date :

Cat No. :

Type :

Notes :

Volts :

Description:

The **NTALB-02SP** LED bar design provides a unique linear lighting solution combining style, performance and durability while reducing construction and operating costs through installation time, energy savings and a maintenance free application. Ideal for surface installations.

Housing:

The **NTALB-02SP** is a high precision extruded anodized aluminum bar that can accept a low-power LED source to medium power.

Lens:

Precision fit extruded acrylic for indoor use only available in:

FR Frosted

Mounting:

Mounts within on a surface with:

FC Fixed clips (set of 2)

Application/Installation:

The **NTALB-02SP** LED bar can be installed, for up, or down applications. This bar can be installed on surfaces, under cabinets.

Electrical and Electronics:

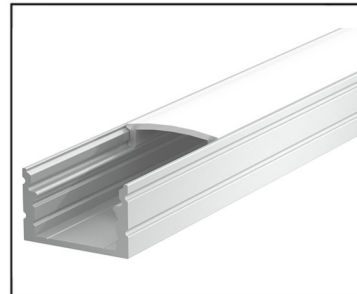
High quality diodes tested (LM80) and certified life cycle for 50,000 hours (L70).

All certified electrical and electronic components have been re-tested over the years for compatibility within products and for specific applications. All products exceed current standards.

Power supply not included, consult factory. Consult the LED specification sheet for the appropriate optical dimmers and controls combination for your project.

Homologation:

Conforms to ANSI/UL standard UL-2108
Certified to CAN/CSA standard 22.2-9.0



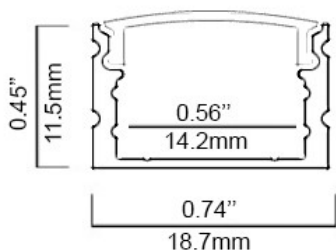
NTALB-02SP - FR



NTALB-02SP - Endcaps

Ordering Matrix / Specification

Model	Bar	Length	Lens	Mountings	LED**	Color	Volts
NTALB	02 SP	1000 mm	FR Frosted	FC Fixed Clips	UT30 UT30 WP UT60 UT60 WP UT120	VWW (2400K) WW (2700K) NW (4100K) WH (5000K) R (Red)*** B (Blue)*** G (Green)*** A (Amber)***	12VDC 24VDC
		2000 mm XX mm*					
		* Consult factory for special lengths.					
					HP30 HP30WP HP120 HP120WP	VWW (2700K) WW (3000K) NW (4100K) WH (5000K) R (Red)*** B (Blue)*** G (Green)*** A (Amber)***	
					UT39K CCT (White)	(2700-6500K)****	
					RGB 150 RGB 150 WP	** Consult the LED linear source and driver data sheets for available wattages and characteristics.	
					RGB 300 RGB 300 WP	*** Consult Factory **** Color Correction	



Natech Industrie

3154 boulevard Industriel, Laval, QC, H7L 4P7 T: (450) 629-1169, F: (450) 629-1168, www.natechlighting.com, info@natechlighting.com

This specification is valid as of 2018-01 and is subject to change without notice. Please confirm with the manufacturer before placing an order.
Copyright 2014 Natech Industrie. All rights reserved.