



THE TETON

I N S T A L L I N S T R U C T I O N S

HARDWARE CHECKLIST

Exact hardware color counts may vary based on the options selected at checkout.

8

1/4"-20
(1-3/4")



24

1/4"-20
(1")



8

1/4"-20
(5/8")



6

1/4"-20
(1/2")



14

1/4" TNut



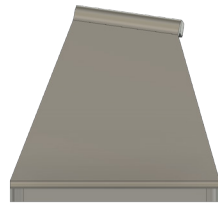
42

1/4" Flat
Washer



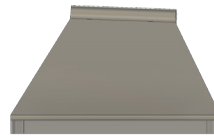
8

M6 Bonded
Washer



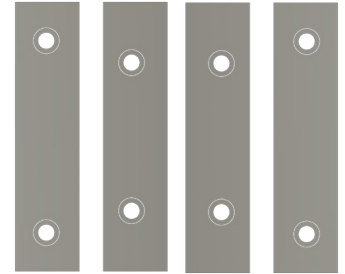
2

FRONT
BRACKETS



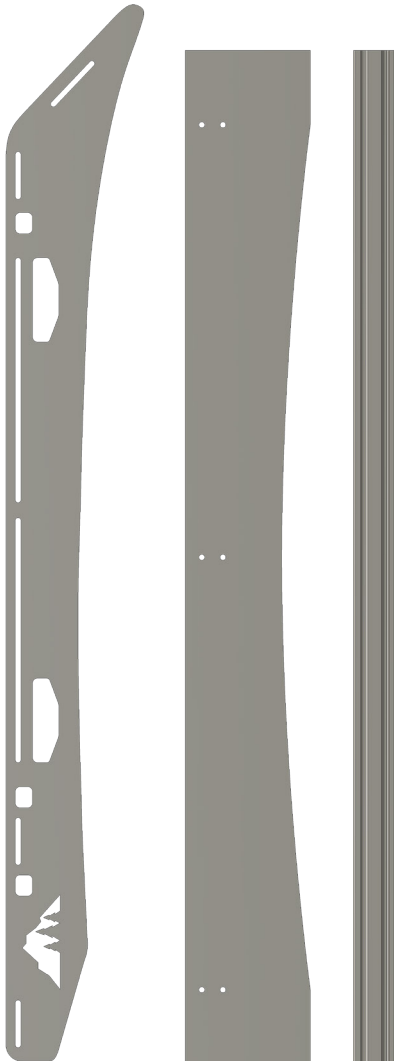
2

REAR
BRACKETS



4

RUBBER
SPACERS

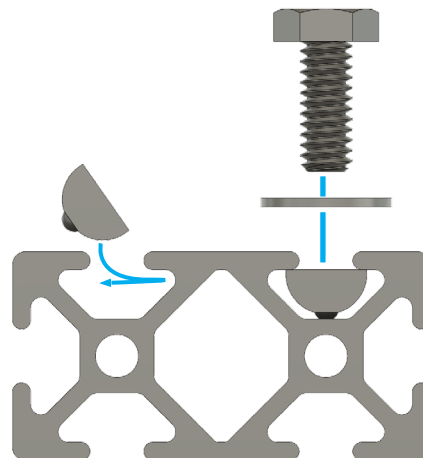


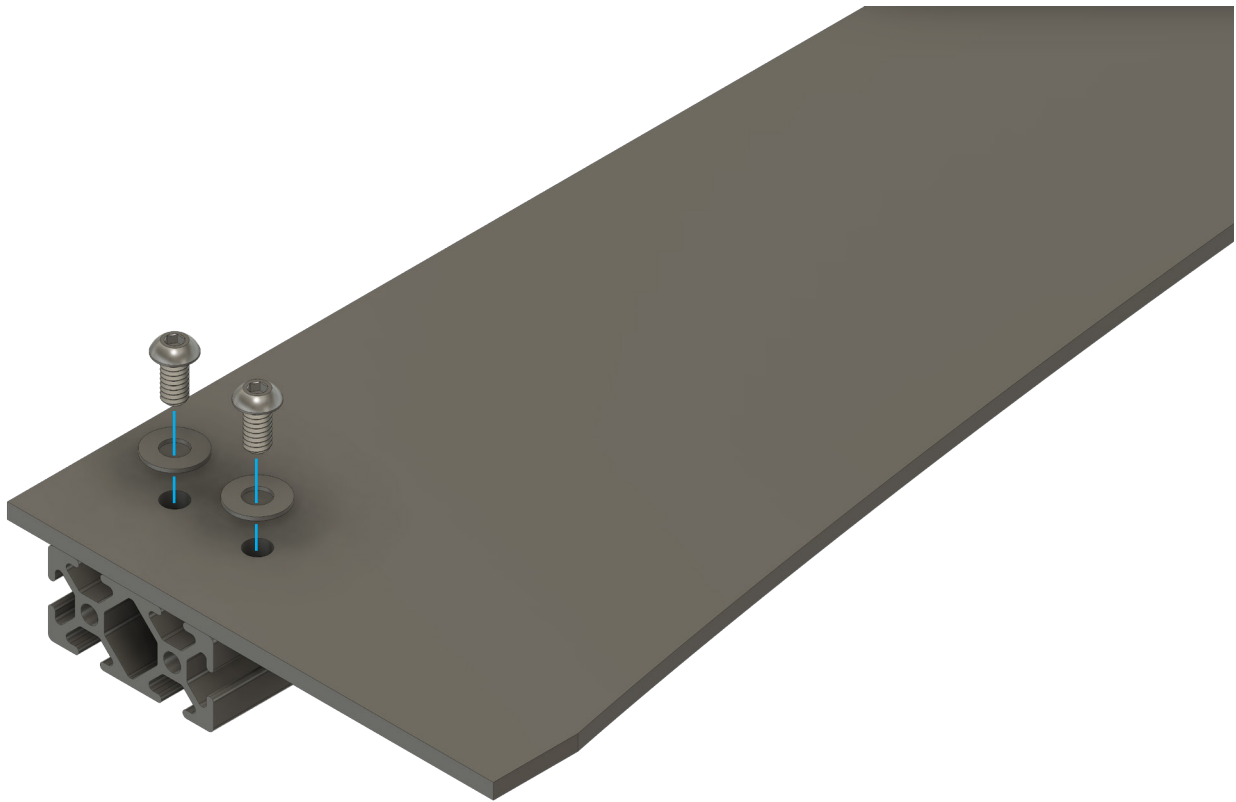
BEFORE YOU BEGIN

This is considered an expert level install. IF you are not confident about the drilling process we recommend seeking the help of a local install shop.

TOOLS REQUIRED: Drill, 1/8" & 7/16" Drill Bits, 7/16" Wrench, 7/16" Socket, 5/32" Allen Key,

USING TNUTS





PRE-ASSEMBLY

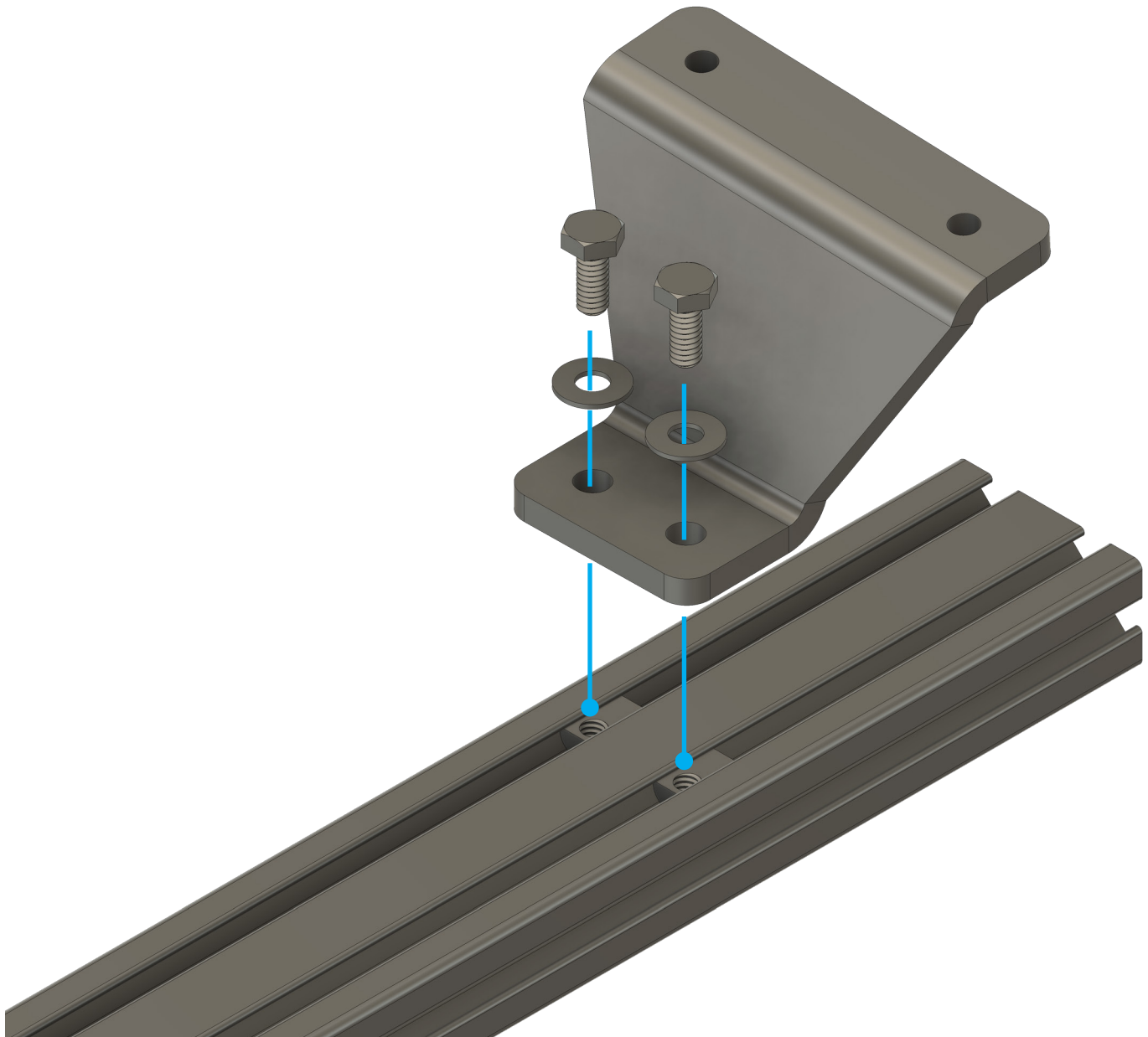
Required Components:

6x 1/4"-20 x 1/2"

6x 1/4" Flat Washers

6x Tnuts

Drop 6 tnuts into the slots on the cross member and line them up with the holes in the fairing. Secure with 6 bolts and washers.



PRE-ASSEMBLY

Required Components:

- 8x** 1/4"-20 x 5/8"
- 8x** 1/4" Flat Washers
- 8x** 1/4" Nuts

Secure top of the mounting brackets to the three main cross members.

Leave the hardware that attaches the mount to the crossbar loose. This will make it easier when centering the bars later.

02

Required Components:

8x 1/4"-20 x 1"

8x 1/4" Flat Washers

After the main support cross members have been secured to the vehicle, you can use a tape measure and center all of the bars on the vehicle. We recommend measuring from the inside edge of the mount to the outside face of the crossbar.

Once all the bars are centered, install the side plates. Align the small slots in the rack side with the ends of the main support crossmembers. Secure it using 12 bolts and washers. Leave the bolts loose enough to move the sideplate to the position that matches the curve of the vehicle.

Once the rack is positioned correctly, tighten down all of the hardware for the rack sides, mounting hardware and roof track bolts.

THE NEXT TWO STEPS CAN BE COMPLETED IN ANY ORDER.

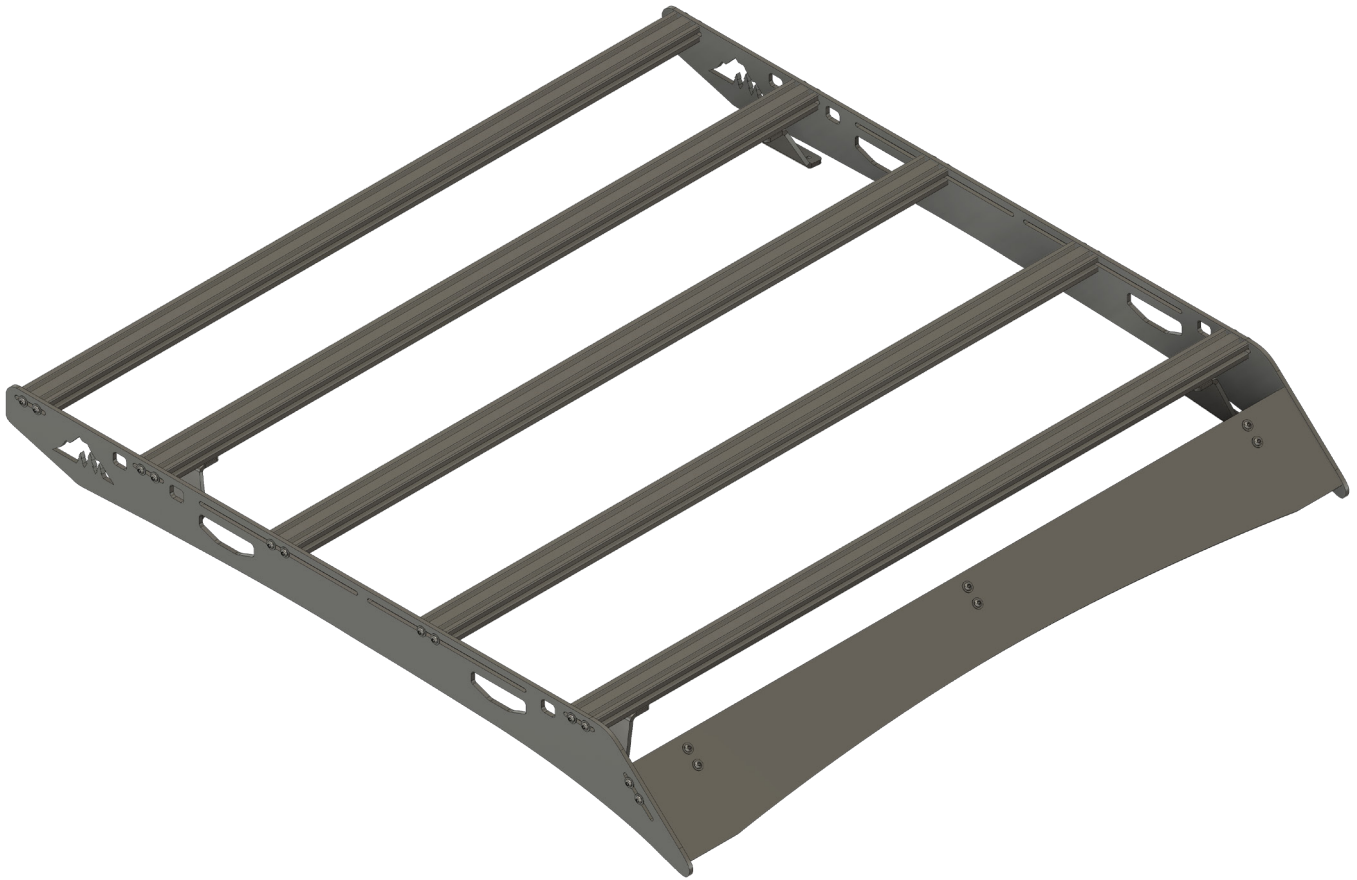
03

Required Components:

4x 1/4"-20 x 1"

4x 1/4" Flat Washers

Position the wind fairing in line with the diagonal slot at the front of the rack. Align the bottom of the fairing with the tip of the roof rack and secure it using 4 bolts and washers.



04

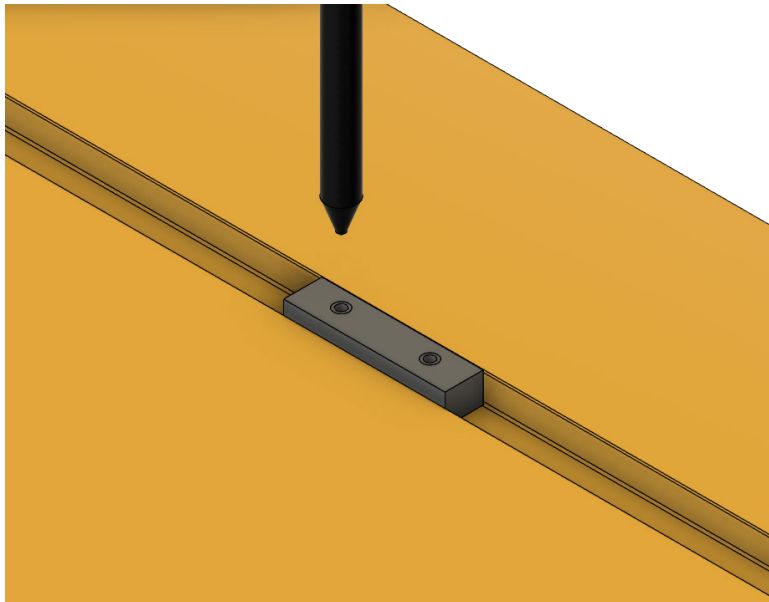
Required Components:

12x 1/4"-20 x 1"

12x 1/4" Flat Washers

Secure all of the remaining cross members to the rack system. Position according to your load requirements.

Position the assembled rack on the roof of your vehicle. Place the rubber spacers under the mounting brackets and mark your positions. This will serve as your drilling template. Remove the rack but leave behind the rubber spacers so you can use them to mark your holes in the next step.



THE NEXT STEPS ARE CRITICAL AND ARE CONSIDERED AN EXPERT LEVEL INSTALL. IF YOU ARE NOT COMFORTABLE DRILLING PLEASE FIND A LOCAL SHOP TO INSTALL YOUR RACK.

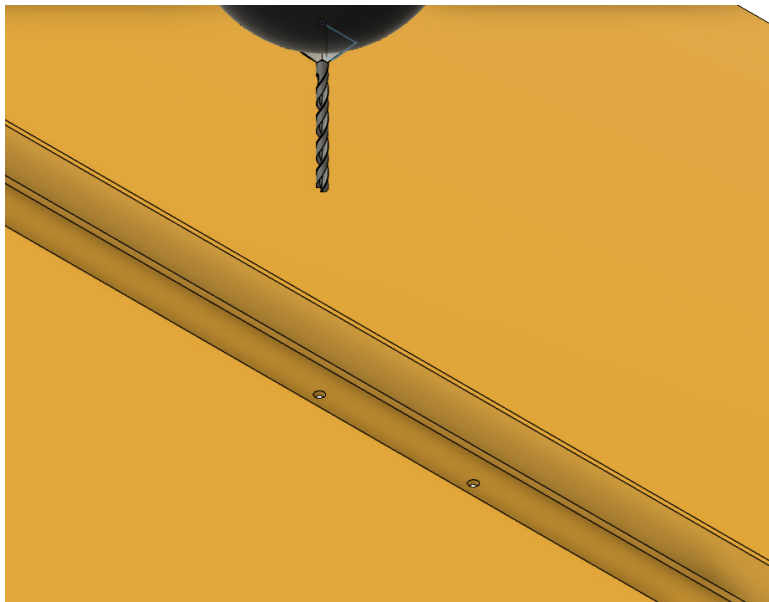
DRILLING

Required Tools:

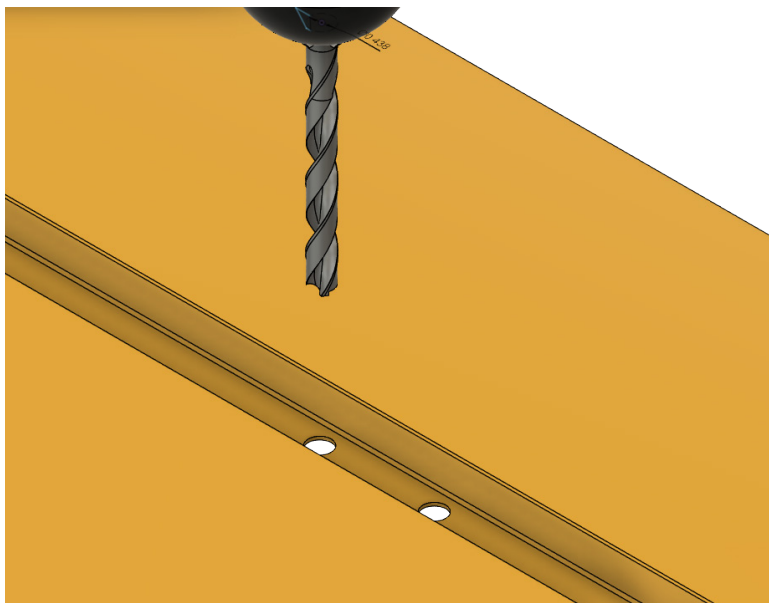
1x Center Punch

1x Drill Bit

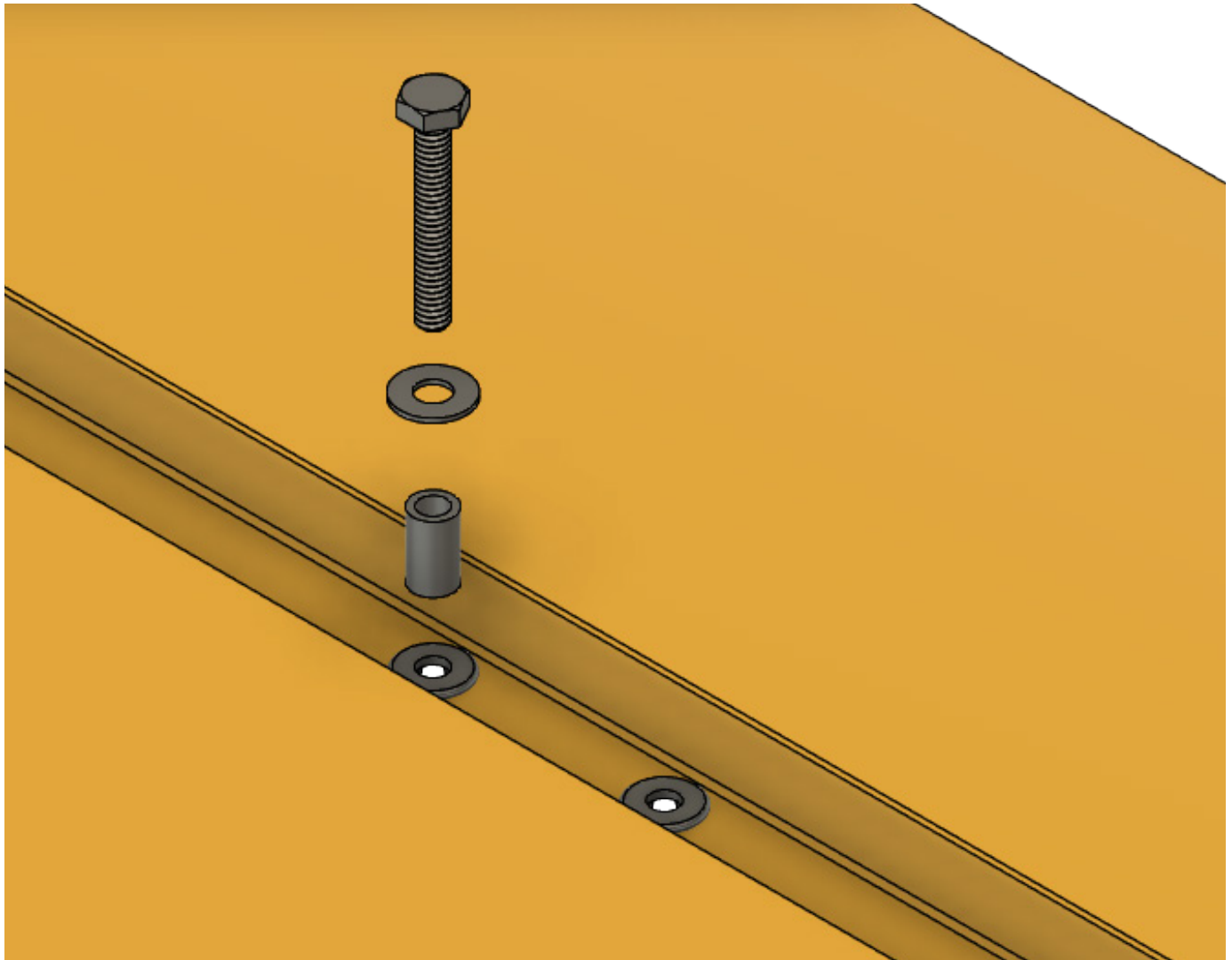
1x Drill Bit



With the rack on the truck mark the position for each rubber spacer using a piece of painters tape. **USE A PUNCH** to create your starting points for drilling. This is important as the drill bit will want to walk away while drilling your pilot holes. The position of these holes are important to making sure that the rack fits your vehicle correctly. **Measure 3 times check 4 times.** We recommend removing your headliner to be sure that you do not damage anything beneath the roof of your vehicle. But, it can be done without doing so if your vehicle is not equipped with curtain airbags and you are **EXTREMELY** careful.



Once you have your start points marked with the punch, drill a pilot hole using a 1/8" drill bit. **DO NOT** allow the drill bit to plunge after the hole is drilled. The side curtain airbags are located in this section of the roof. There is a decent bit of room but you want to prevent going any farther than you have to. Follow up the pilot holes with a 7/16" drill bit. It is important to use a 7/16" drill bit to insure proper jack nut fitment. Also make sure to keep the drill bit as still as possible while drilling. **AGAIN, DO NOT** allow the drill bit to plunge after the hole is drilled.



08

Required Components:

8x Jack Nuts

Required Tools:

1x Rivnut Install Tool

or

1x 1/4"-20 x 1"

1x Spacer Sleeve

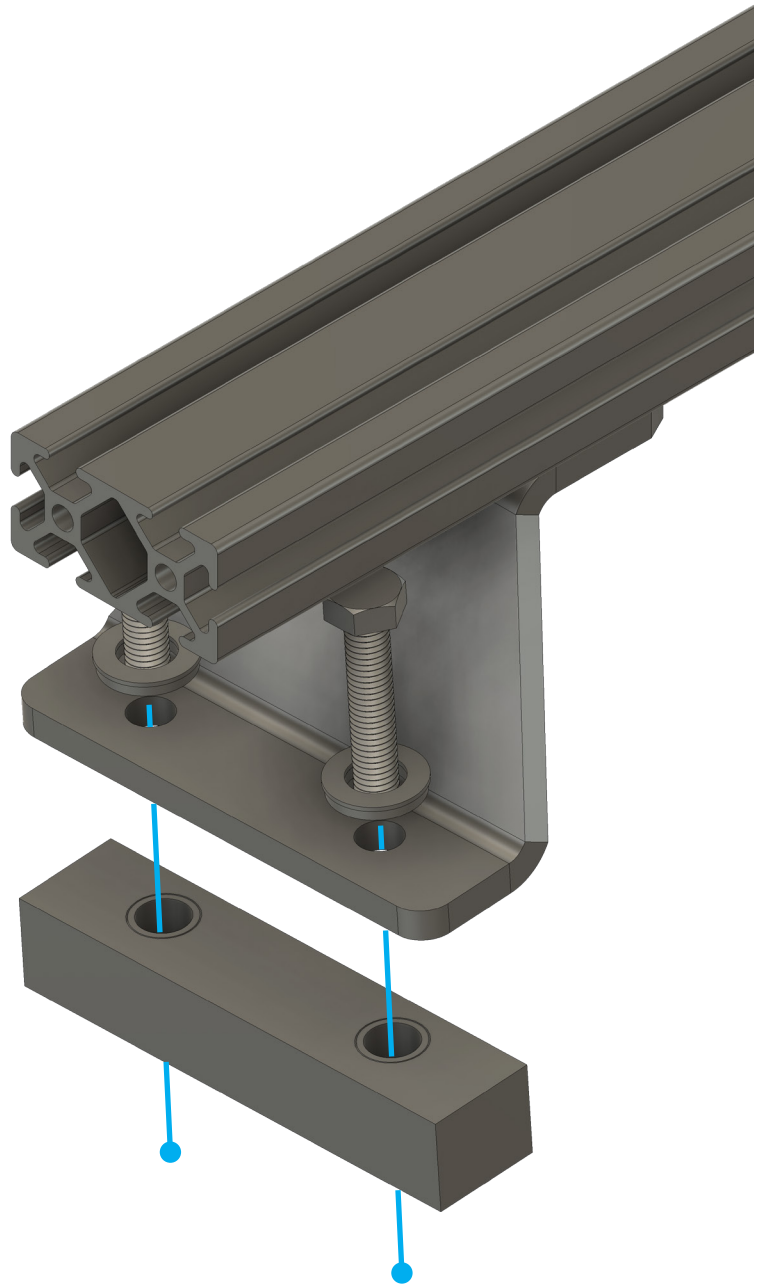
1x 1/4" Flat Washer

Once all of your holes have been drilled it is time to work on installing the jack nuts that the rack will bolt into. We recommend taking the time to clean off any burrs that may have been left behind while drilling. The jack nuts should feel snug in the hole. They will require a light tap to get them to pop into place. Once this is done you are ready to compress them.

We recommend using an actual Rivnut install tool for this part of the process. IF you do not have access to one of these tools, you can use one of the mounting bolts and the metal spacer sleeve paired with a washer to accomplish the same result.

Use your install tool and thread it into the nuts in the roof. Once you are threaded begin compressing the handle. Make sure that they are tight and that there is no play in the nut.

Once the rivnuts have been installed place a small dot of silicone. This will help prevent any potential leaking issues in the event that the rubber does not seal the rivnut.



01

Required Components:

8x M8 Bolts

8x M8 Flat Washers

Place the rack back on the roof of the vehicle and make any small adjustments required.

Position the mounting bracket over the rubber spacer and secure it with 12 bolts and bonded washers passed through the bracket, rubber, and into the holes in the roof.

The bonded washers should compress and become flat, but not concave. Do not over tighten these mounts.

TORQUE SPEC: 22in-lb

EXPLORE.

All products built and designed by Sherpa Equipment Company are intended for off-road use and should be assembled, installed, and used according to Sherpa Equipment Company's recommendations. Sherpa Equipment Companies products should be used safely with good judgment towards others and surroundings.

By installing Sherpa Equipment Companies products on your vehicle you assume all liability. Sherpa Equipment Company will not be held liable for damages or loss associated with the installation or use of its products. It is recommended that you inspect your roof rack within the first 100 miles of installation and every 500 miles after.