

ASSEMBLING THE RACK

We recommend assembling the rack completely on a level surface prior to installation on the vehicle. This will help certify that all parts are properly aligned and even. Assembling the rack on the vehicle or the roof may cause unsatisfactory results which may cause wind noise or rack failure.

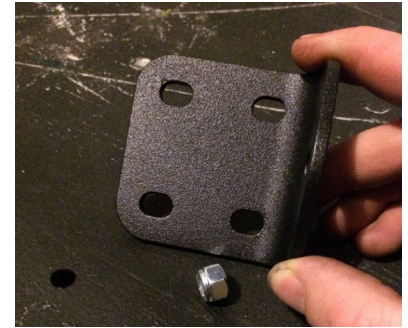
Check out <http://dirtroadtrip.com/blog/trucks/prlnsu-design-studio-lc80-roof-rack-install/> for a time lapse video of the install process.



Layout all the parts including accessories you may be installing such as a lightbar, or other hardware to attach accessories



Start by connecting the crossbars to the side rails. You will use (4) 1/4"-20 x 1" machine screw, (4) 1/4" flat washer, and (4) 1/4" flat washer per crossbar. Tighten all crossbars loosely as shown in the picture and then go around and tighten them in even increments.



Once the 8 crossbars are connected to the side rails and are all evenly tightened and secure you can then attach the L brackets to the side rails. The L brackets are attached using (4) 1/4"-2 x 1" machine screws, (8) 1/4" flat washers, and (4) 1/4" nylock nuts per bracket.



The L brackets should be secured as shown above in all 4 holes.

***NOTE:** The appropriate torque for a 1/4 - 20 grade two bolt is between 37 - 43 in-lbs. Which is approximately 3 ft-lbs. The heads will shear off between 15-20 ft-lbs. **Use caution when using power tools.**

A

***NOTE:** The 1/4 Lock washers are no longer included with the hardware. Use the provided tube of thread lock instead.

B

Once the crossbars are all installed and tight, check the rack to make sure it is square. You can do this by comparing diagonal measurements from corner to corner. Once the rack is tight and square move on to the next steps and assemble the wind deflector.

All products built and designed by PrInSu Design Studio are intended for off-road use and should be assembled, installed, and used according to PrInSu Design Studio's recommendations. PrInSu Design Studio products should be used safely with good judgment towards others and the environment. By installing PrInSu Design Studio Products on your vehicle you assume all liability. PrInSu Design Studio will not be held liable for damages or loss associated with the installation or use of its products.

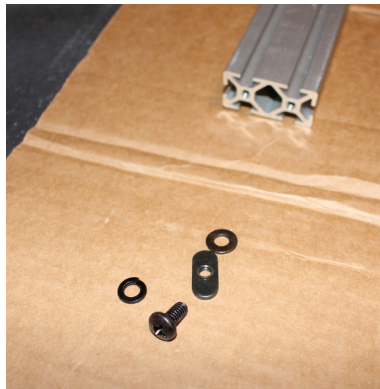
Be smart, use good judgement, don't overload your vehicle to the point of inferior handling and maneuverability!

ASSEMBLING THE WIND DEFLECTOR

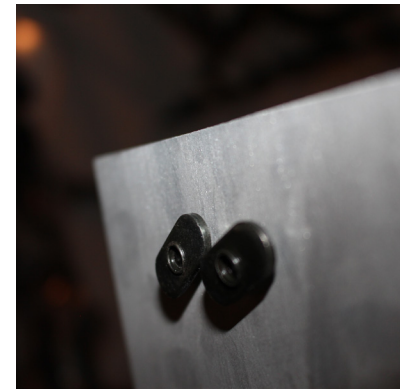
We recommend assembling the rack completely on a level surface prior to installation on the vehicle. This will help certify that all parts are properly aligned and even. Assembling the rack on the vehicle or the roof may cause unsatisfactory results which may cause wind noise or rack failure.



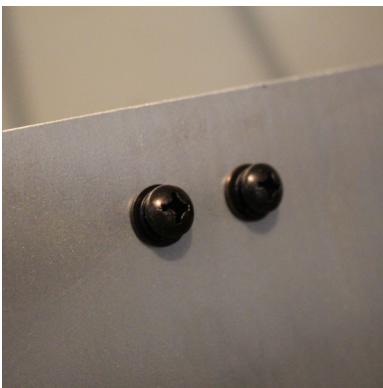
Locate the correct hardware bag containing (10) nuts, lock washers, flat washers, and phillips machine screws.



Locate the clear anodized crossmember that will be used as the support for your wind deflector. (Some models may have a black anodized bar)



Install the hardware from step 1 through the wind deflector as shown in steps 3 and 4. The screws should just barely thread into the nuts.



Complete step 3 for all ten mounting holes on the the wind deflector. The correct order is screw, lock washer, flat washer, deflector, nut. The screw should be loosely threaded into the nut.



Lay the deflector on a flat surface so that the nuts are facing up. From one end start sliding the extrusion bar so that the nuts feed into the channel. The fit is tight but if everything is lined up properly it will slide right on



Once all nuts have been fed into the channel and the extrusion bar and deflector are flush on both ends, turn the assembly over and tighten the screws till the lock washers are compressed. The defelctor can now be bolted to the rack.

All products built and designed by PrInSu Design Studio are intended for off-road use and should be assembled, installed, and used according to PrInSu Design Studio's recommendations. PrInSu Design Studio products should be used safely with good judgment towards others and the environment. By installing PrInSu Design Studio Products on your vehicle you assume all liability. PrInSu Design Studio will not be held liable for damages or loss associated with the installation or use of its products.

Be smart, use good judgement, don't overload your vehicle to the point of inferior handling and maneuverability!

INSTALLING THE RACK

Please see the help of another individual when lifting the rack onto your vehicle. Attempting to place the rack on your vehicle without additional help may result in personal injury or damage to your vehicle or rack. PrInSu Design Studio is not liable for any personal or property damage resulting from improper installation.



Place the rack on the roof of the vehicles carefully to make sure that the wind deflector is not resting on the roof of the truck. Move the rack forward or back until proper fit is achieved and the maximum surface contact between the rain gutters and the side rails of the rack is achieved.



Once the rack is sitting flush inside the rain gutters you can move collect the clamps from your hardware kit and prepare to attach them to the L brackets on your rack and the rain gutter of your vehicle.



Make sure the rack is centered and loosely secured at all mounting points. Once the rack is in the desired location. Tighten each bolt till the clamp is securely fastened and the rack is secure. Moderate, even tension is the goal. Overtightening the clamps is unnecessary and will lead to deformation.

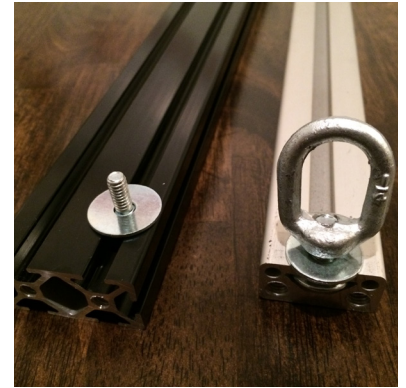
The rack is now ready for use. Make sure to check all connections after roughly 100 miles of highway driving or 20 miles of offroad to ensure that all connections are secure. We recommend this as a precaution but have never had any issues.

All products built and designed by PrInSu Design Studio are intended for off-road use and should be assembled, installed, and used according to PrInSu Design Studio's recommendations. PrInSu Design Studio products should be used safely with good judgment towards others and the environment. By installing PrInSu Design Studio Products on your vehicle you assume all liability. PrInSu Design Studio will not be held liable for damages or loss associated with the installation or use of its products.

Be smart, use good judgement, don't overload your vehicle to the point of inferior handling and maneuverability!

ACCESSORIES AND ADD-ONS

The universal nature of the TSLOTS aluminum extrusion crossbars allows for the attachment of various accessories. Because we cannot control how or what accessories are installed we do not take any responsibility for their performance or use. Please use good judgement when outfitting your roof rack. Below are shown some basic uses we have found suitable for the PrInSu Design Studio Roof Racks.



All products built and designed by PrInSu Design Studio are intended for off-road use and should be assembled, installed, and used according to PrInSu Design Studio's recommendations. PrInSu Design Studio products should be used safely with good judgment towards others and the environment. By installing PrInSu Design Studio Products on your vehicle you assume all liability. PrInSu Design Studio will not be held liable for damages or loss associated with the installation or use of its products.

Be smart, use good judgement, don't overload your vehicle to the point of inferior handling and maneuverability!