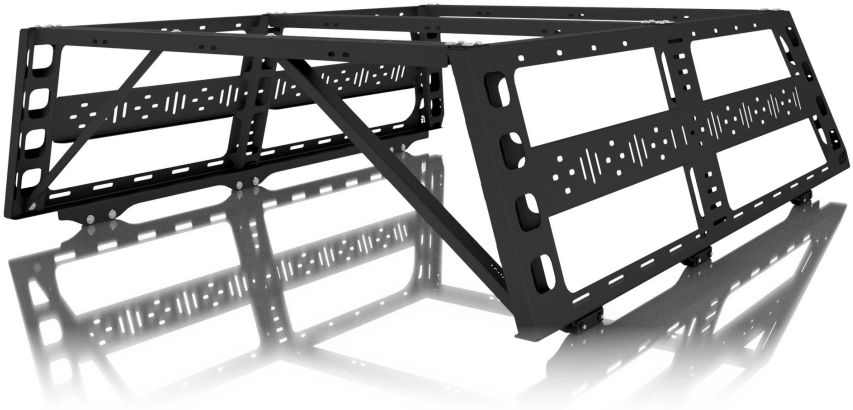


CBI Modular

BED-RACKS



Applications installation instructions

These installation instructions apply to the following CBI Off Road products

ALL Clamp Style bed racks

- CBI Cab Hight Bed Rack
- CBI Roof Rack Height Bed Rack

IMPORTANT!

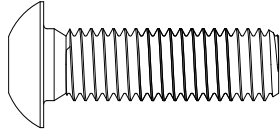
THANK YOU for purchasing this CBI product. Please read through this entire document before proceeding with installation. If you are not confident in your mechanical skills, please seek the help of a professional to perform the installation. Check your packages immediately upon arrival to ensure that everything listed is included, and to check for damage during shipping. ***If anything is missing or damaged, or if you need technical assistance with any aspect of this installation, call CBI at (208) 528-0664 as soon as possible.***

IMPORTANT!

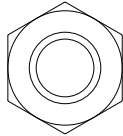
If your CBI product comes as unpainted, bare steel or aluminum. You will want to either powder coat or paint prior to final installation, however it is very important to PRE-INSTALL the unpainted product first, following these instructions, BEFORE painting or powder coating any of the components! This will ensure that all parts are correct and any incidental trimming or drilling will have been done prior to coating. Also, it will give you a practice run to familiarize yourself with the process, to lessen the likelihood of damaging the finish during final installation. CBI Off Road is NOT RESPONSIBLE for paint or powder coating costs, damage to paint or powder coating, or costs associated with inadvertently painting or powder coating components that are defective or were shipped or assembled in error. It is the customer's responsibility to pre-install and verify that all parts are correct prior to paint or powder coat

Hardware 1:1 Scale View

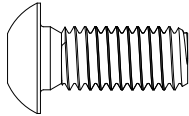
A 12 – 3/8 X 1.25 SS BUTTON HEAD CAP SCREW



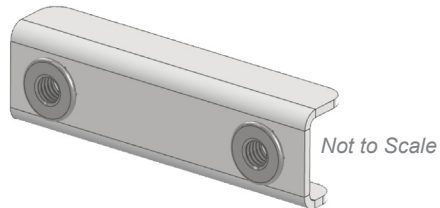
B 28 – 5/16 SS SERRATED TOOTH FLANGE LOCK NUT



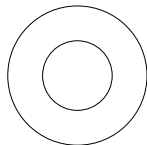
C 28 – 5/16 X 3/4 SS BUTTON HEAD CAP SCREW



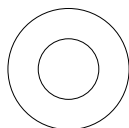
D 6 – CHANNEL CLAMP BRACKET



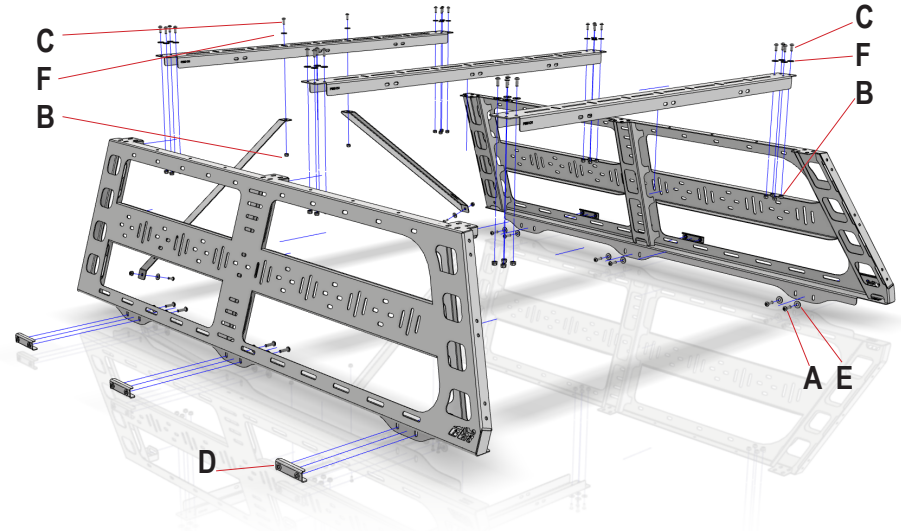
E 12 – 3/8 SS FLAT WASHER



F 28 – 5/16 SS FLAT WASHER



Exploded Product/Hardware View



Maximum load capacity: 320lbs evenly distributed over crossbars. Refer to your vehicle manufacturers handbook for maximum load rating.

Recommendations:

It is essential that all bolt connections be checked after driving a short distance when you first install your bed rack. Bolt connections should be checked again at regular intervals (probably once a week is enough, depending on road conditions, usage, loads and distances travelled). You should also check the crossbars each time they are refitted. Make sure to fasten your load securely. Please ensure that all loads are evenly distributed and that the centre of gravity is kept as low as possible.

Load Ratings:

When the bed rack are to be used on a vehicle that is driven off road, the manufacturer maximum load rating (to be found in the vehicles User Manual) should be strictly followed.

Caution:

The handling characteristics of the vehicle changes when you transport a load on top of the bed. For safety reasons we recommend you exercise extreme care when transporting wind-resistant loads. Special consideration must be taken into account when cornering and braking.

Note for Dealers and Installers:

It is your responsibility to ensure instructions are given to the end user or client.

Questions?

Call: 866-522-0697

Email: info@cbioffroadfab.com

Installation

1.
Start by installing the Bed Rack side using the provided clamp system.

A 6 – 3/8 X 1.25 SS BUTTON HEAD CAP SCREW

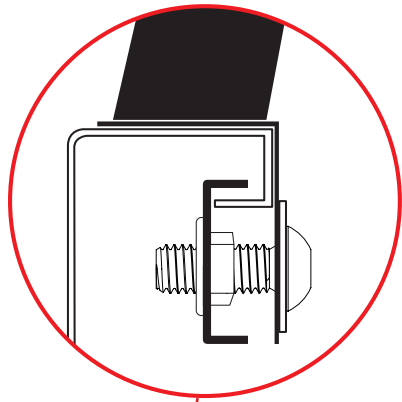
E 6 – 3/8 SS FLAT WASHER

D 3 – CHANNEL CLAMP BRACKET

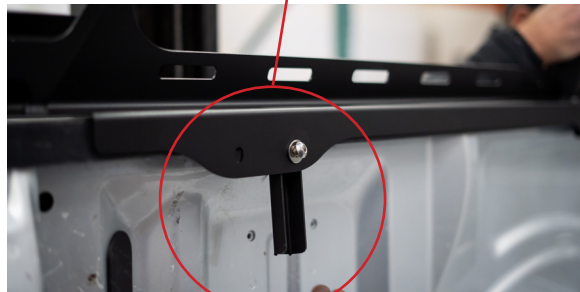
2.
The clamp system installs as shown

Note: Alternatively the Bed Rack can be assembled and placed on the bed complete. This is only possible if you have enough help to lift the full rack onto the truck.

1.



2.



3.



4.



5.



3.
Install the opposite Bed Rack side

A 6 – 3/8 X 1.25 SS BUTTON HEAD CAP SCREW

E 6 – 3/8 SS FLAT WASHER

D 3 – CHANNEL CLAMP BRACKET

4.
Place the three cross bars in place.

C 24 – 5/16 X 3/4 SS BUTTON HEAD CAP SCREW

F 24 – 5/16 SS FLAT WASHER

B 24 – 5/16 SS SERRATED TOOTH FLANGE LOCK NUT

5.
The cross bar hardware can be installed with or without the "F" flat washer.

Note: It is recommended that you leave all hardware loose until the rack is completely installed.

6.

Install the upper bolt for the front cross support brackets as shown.

C 4 – 5/16 X 3/4 SS
BUTTON HEAD
CAP SCREW

F 4 – 5/16 SS FLAT
WASHER

B 4 – 5/16 SS SERRATED
TOOTH FLANGE
LOCK NUT

7.

Install the lower bolt for the front cross support brackets

8.

Once everything is lined up a square you can tighten all the hardware.

6.



7.



8.



792 E Iona Rd.
Idaho Falls, ID 83274
cbioffroadfab.com
208.528.0664