

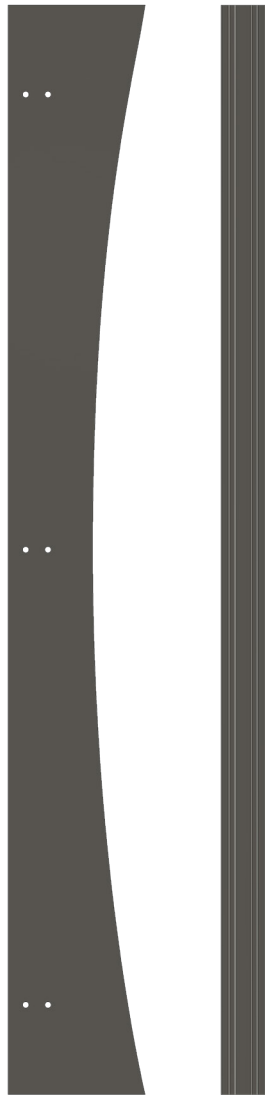
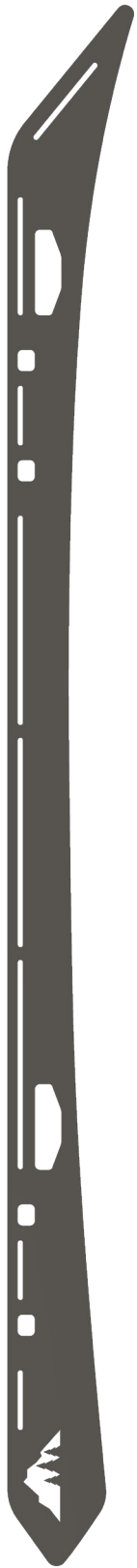


THE RAMMSTEIN

I N S T A L L I N S T R U C T I O N S

HARDWARE CHECKLIST

Exact hardware color counts may vary based on the options selected at checkout.



12

1/4"-20
(1")



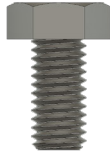
32

1/4"-20
(1") SB



12

M8-1.25
(16mm)



8

1/4"-20
(9/16")



6

1/4"-20
(1/2") SB



18

1/4" Tnut



74

1/4" Flat
Washer



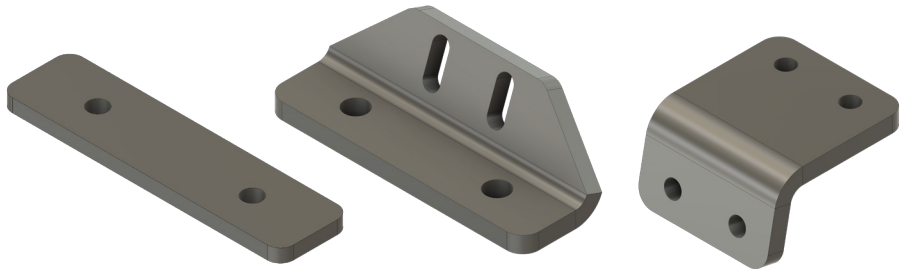
12

M8 Flat
Washer



12

Nylock Nuts



TRACK ANCHOR
PLATE

ADJUSTABLE
MOUNT LOWER

ADJUSTABLE
MOUNT UPPER

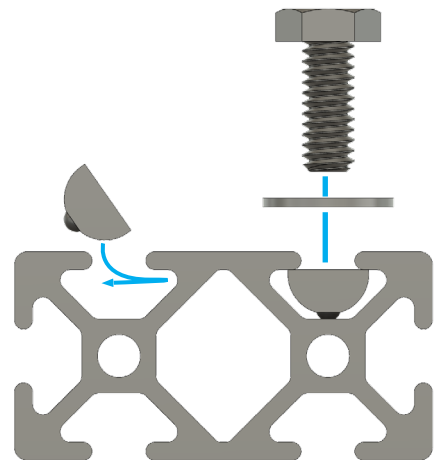
6

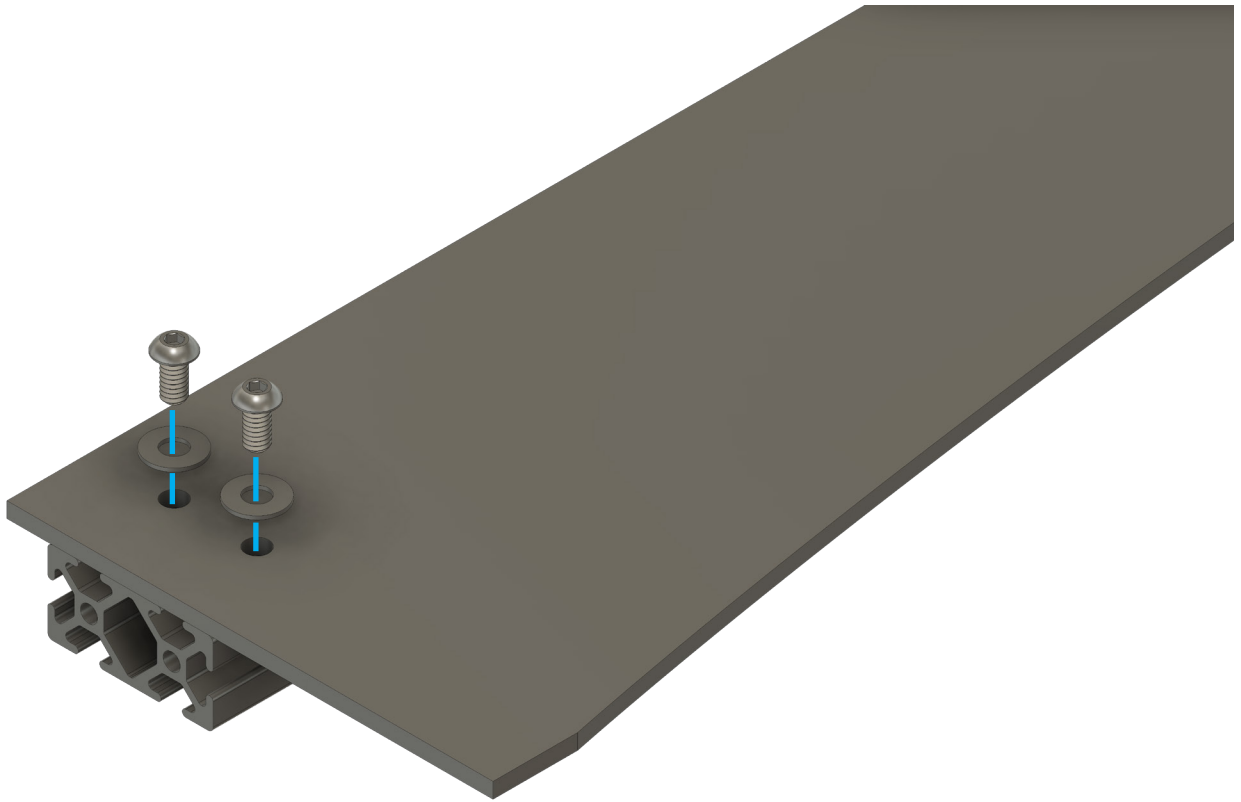
ADJUSTABLE
MOUNTS AND
PLATES

BEFORE YOU BEGIN

Before installing this rack system, make sure your vehicle has OEM roof tracks installed.

USING TNUTS





PRE-ASSEMBLY

Required Components:

6x 1/4"-20 x 1/2"

6x 1/4" Flat Washers

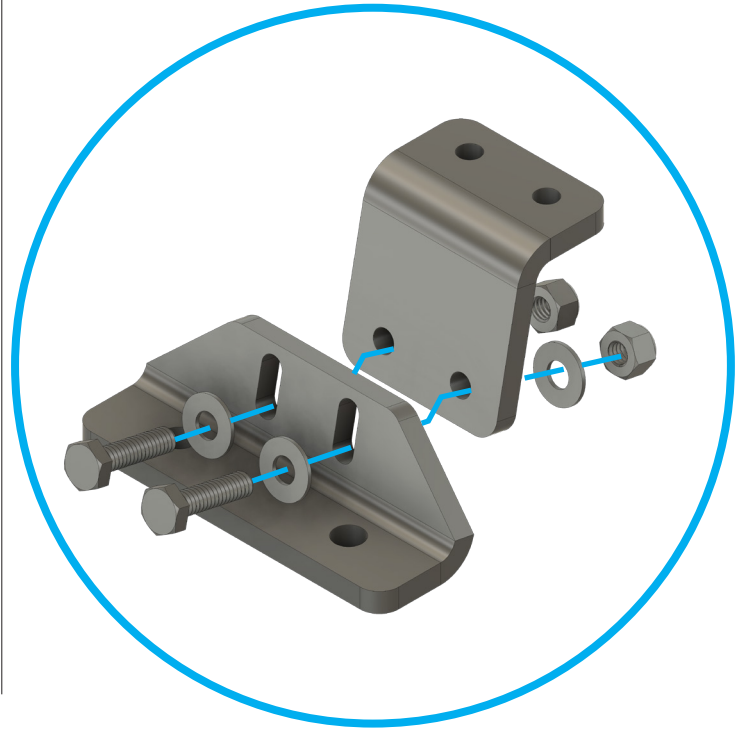
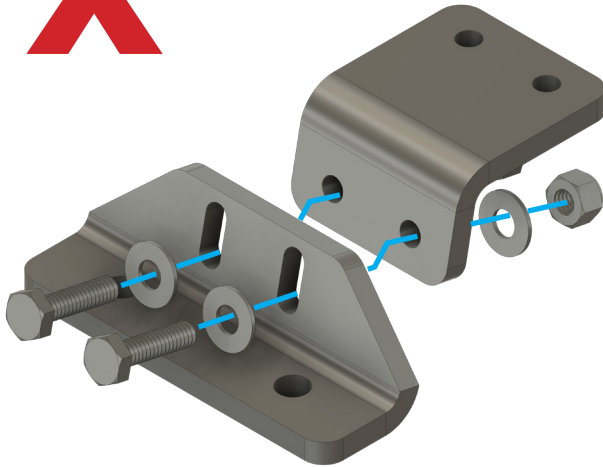
6x Tnuts

Drop 6 tnuts into the slots on the cross member and line them up with the holes in the fairing. Secure with 6 bolts and washers.

SHORT

TALL

X



PRE-ASSEMBLY

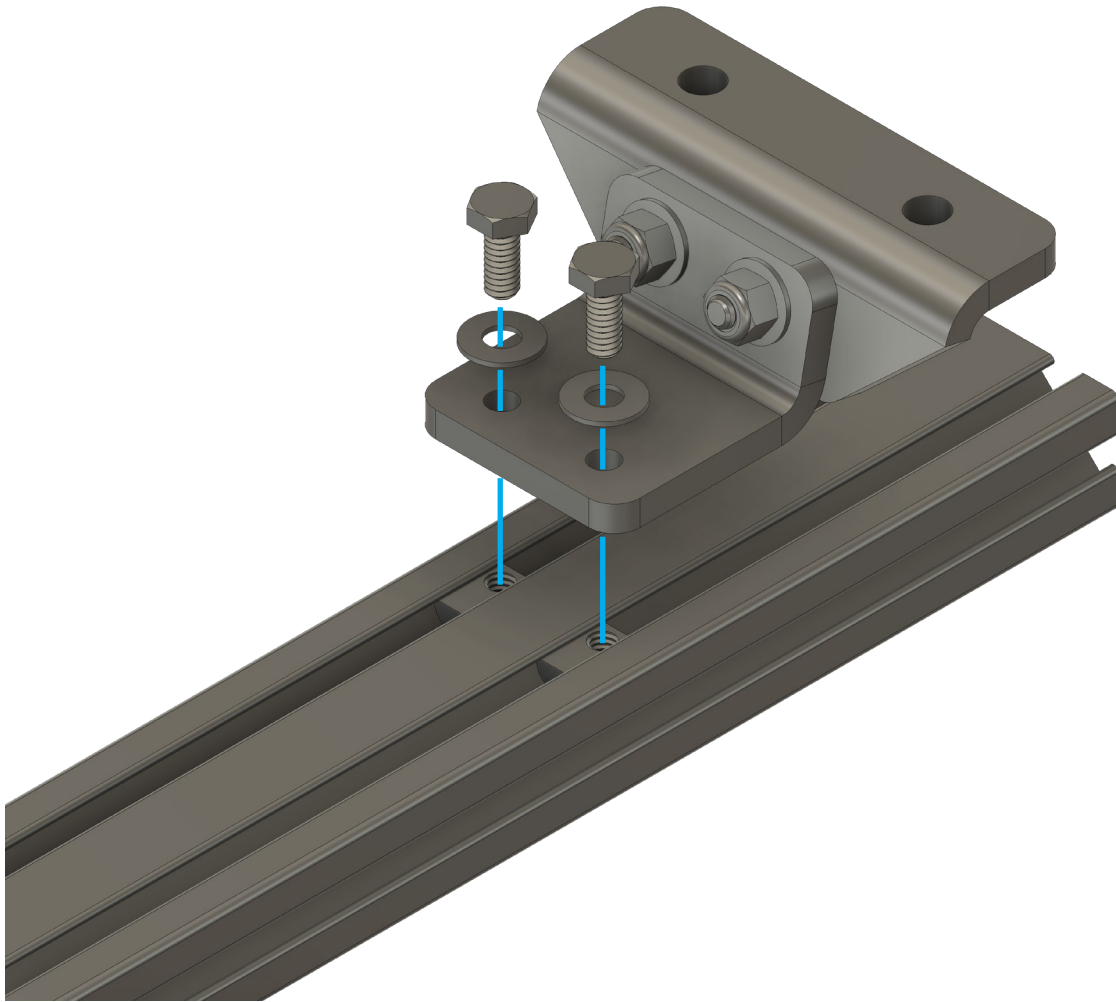
Required Components:

12x 1/4"-20 x 1"

24x 1/4" Flat Washers

12x Nylock Nuts

Before assembling the rack system, start with the mounting brackets. These brackets are designed to be assembled in two configurations. If your rack system requires more height, assemble them in the "tall" configuration. If you would like to keep it as low as possible, assemble them in the "short" configuration. It is recommended that you use them in the tall configuration for this vehicle.



01

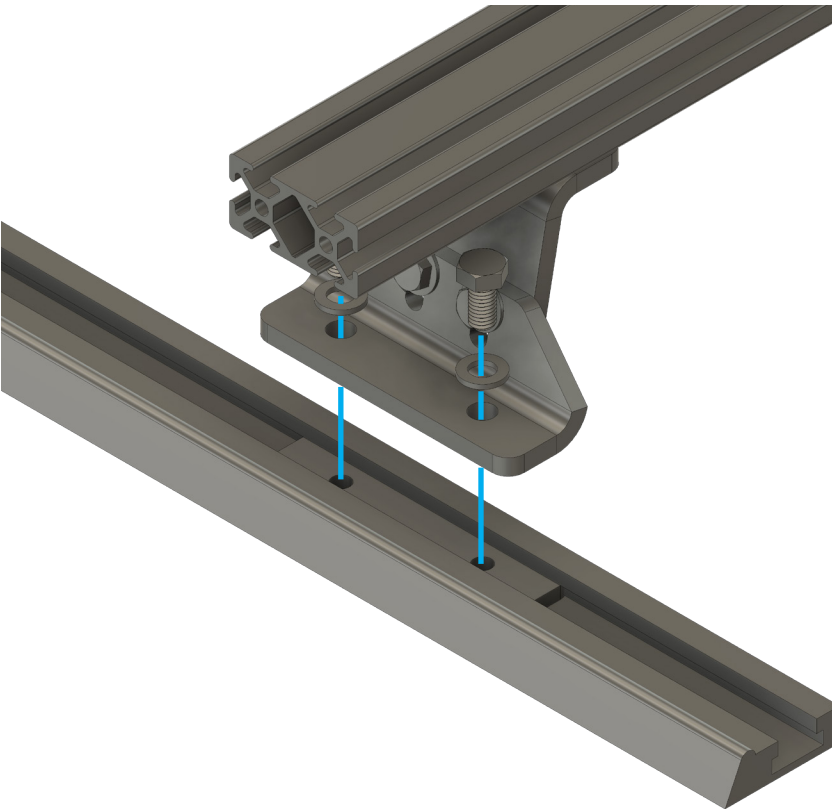
Required Components:

12x 1/4"-20 x 5/8"

12x 1/4" Flat Washers

12x Tnuts

Drop the 12 tnuts into the slots of three crossbars, two in each track. Bolt the top of the mounting brackets to the cross member, one foot on each end as shown in the diagram. Leave this hardware loose so that it can be adjusted once the cross members are placed on the vehicle.



02

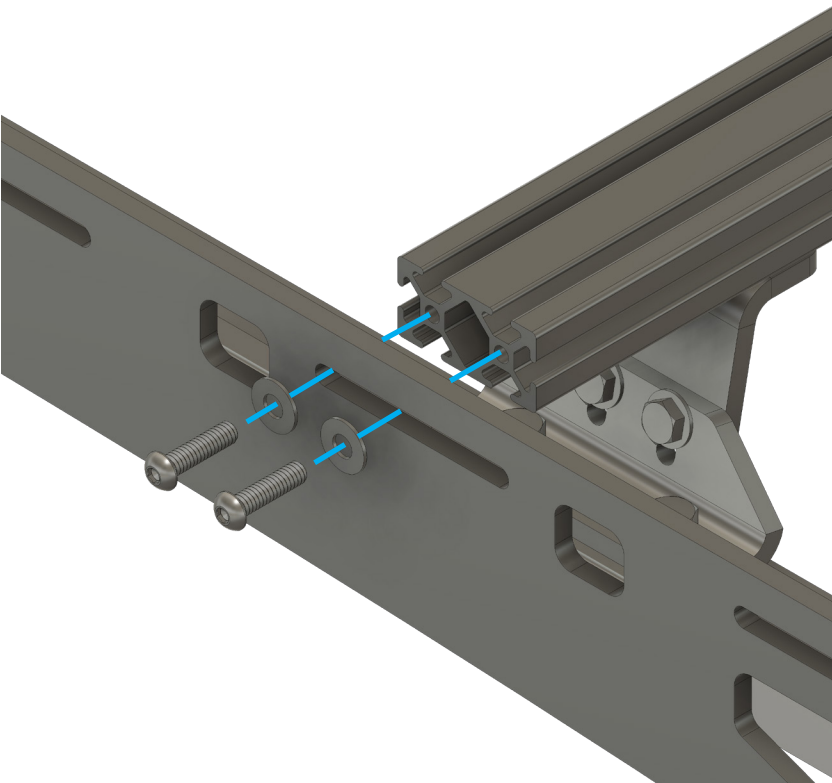
Required Components:

12x M8 Bolts

12x M8 Flat Washers

With the two main support cross members assembled, flip them over and align the mounting brackets with the OEM roof tracks. Insert the 6 anchor plates into the roof track. Secure the mounts to the vehicle using 12 M8 bolts and washers, passed through the mounting bracket and into the anchor plate in the roof track. Leave this hardware loose so that it can be adjusted once the side plates are attached.

Center the cross members on the vehicle using a tape measure and tighten them to the mounting bracket.



03

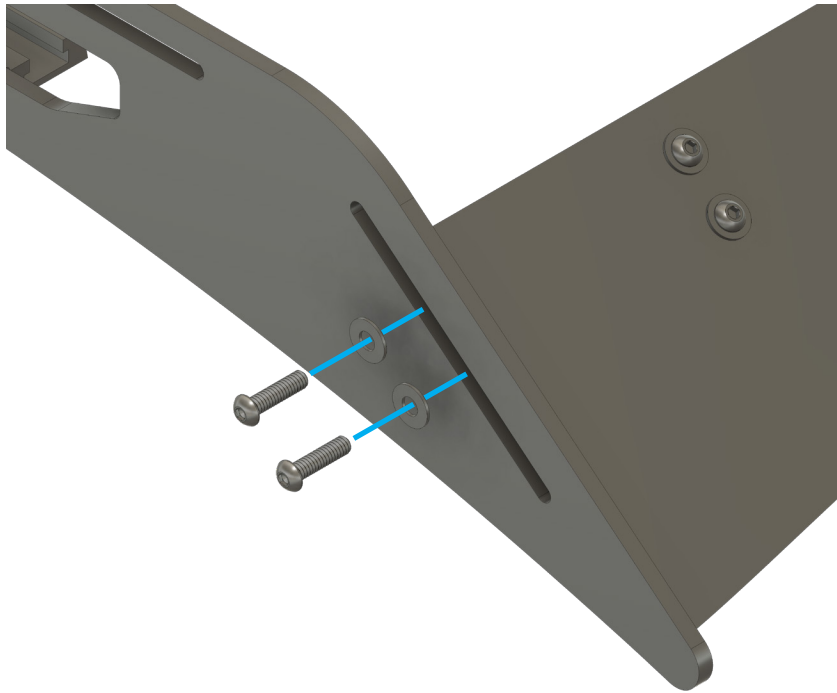
Required Components:

12x 1/4"-20 x 1"

12x 1/4" Flat Washers

After the main support cross members have been secured to the vehicle, you can install the side plates. Align the small slots in the rack side with the ends of the main support crossmembers. Secure it using 12 bolts and washers. Leave the bolts loose enough to move the sideplate to the position that matches the curve of the vehicle.

Once the rack is positioned correctly, tighten down all of the hardware for the rack sides, mounting hardware and roof track bolts.



04

Required Components:

4x 1/4"-20 x 1"

4x 1/4" Flat Washers

Position the wind fairing in line with the diagonal slot at the front of the rack. Align the bottom of the fairing with the tip of the roof rack and secure it using 4 bolts and washers.



05

Required Components:

16x 1/4"-20 x 1"

16x 1/4" Flat Washers

Secure all of the remaining cross members to the rack system. Position according to your load requirements.

EXPLORE.

All products built and designed by Sherpa Equipment Company are intended for off-road use and should be assembled, installed, and used according to Sherpa Equipment Company's recommendations. Sherpa Equipment Companies products should be used safely with good judgment towards others and surroundings.

By installing Sherpa Equipment Companies products on your vehicle you assume all liability. Sherpa Equipment Company will not be held liable for damages or loss associated with the installation or use of its products. It is recommended that you inspect your roof rack within the first 100 miles of installation and every 500 miles after.