

PRINSU ROOF RACK INSTALLATION GUIDE

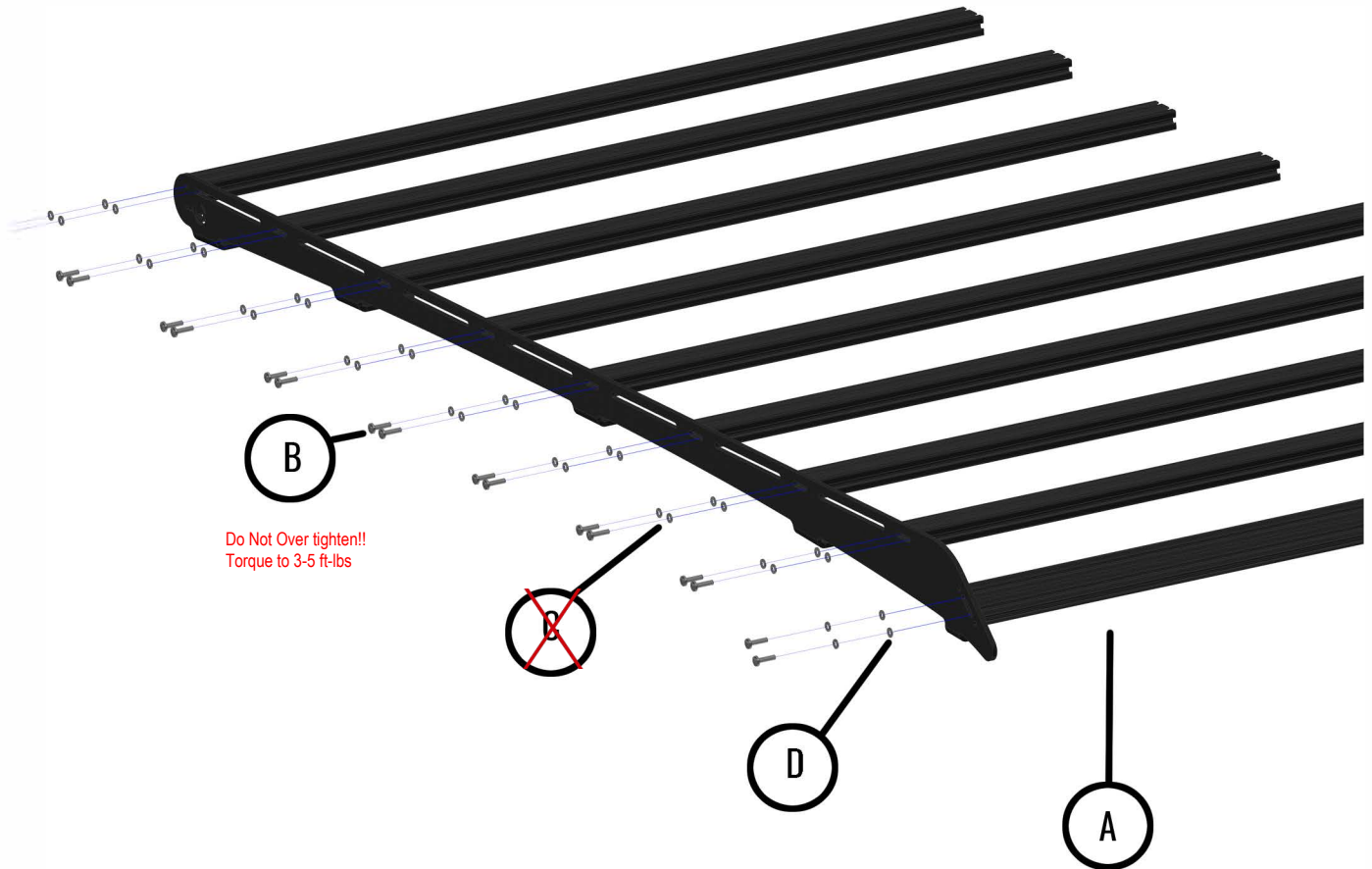


GEN 2 SUBARU FORESTER

All products built and designed by Prinsu Design Studio are intended for off-road use and should be assembled, installed, and used according to Prinsu Design Studio's recommendations. Prinsu Design Studio products should be used safely with good judgment towards others and the environment. By installing Prinsu Design Studio Products on your vehicle you assume all liability. Prinsu Design Studio will not be held liable for damages or loss associated with the installation or use of its products. Be smart, use good judgement, don't overload your vehicle to the point of inferior handling and maneuverability!

PRINSU ROOF RACK INSTALLATION GUIDE

CROSSBAR HARDWARE DIAGRAM



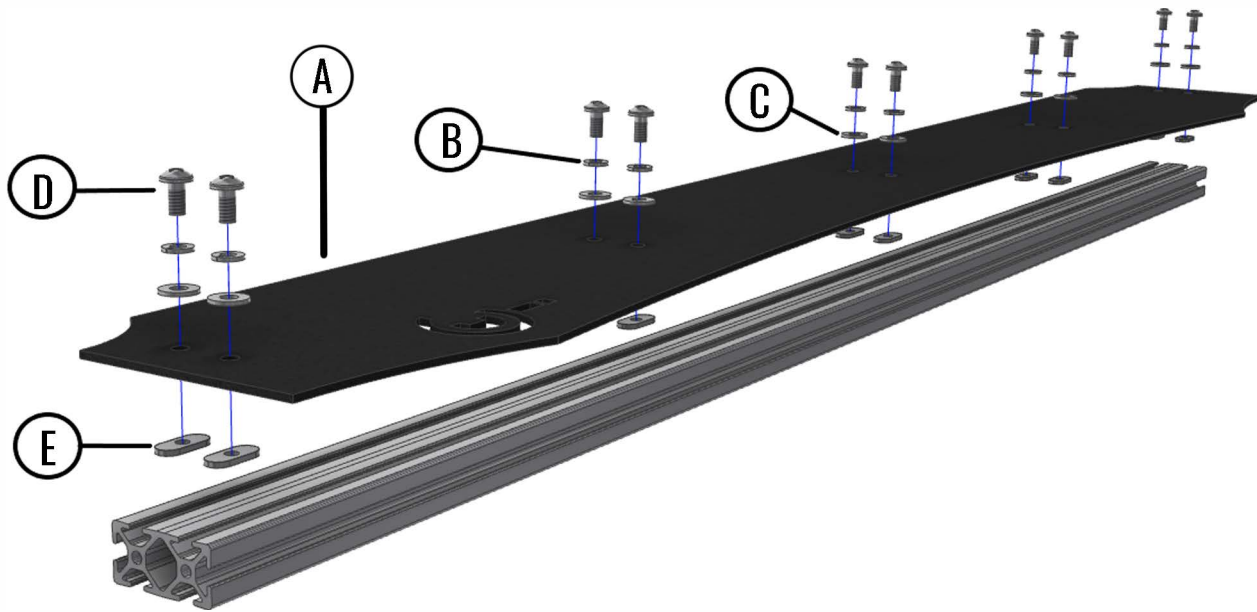
PART	DESCRIPTION	QUANTITY
A	47" - 1 X 2 - CROSSBAR	9
B	1/4" - 20 x 1"- MACHINE SCREW	36
C	1/4" - LOCK WASHER	36
D	1/4" - SAE FLAT WASHER	36

****Lock washers are no longer included. Use the provided tube of thread lock instead.**

All products built and designed by Prinsu Design Studio are intended for off-road use and should be assembled, installed, and used according to Prinsu Design Studio's recommendations. Prinsu Design Studio products should be used safely with good judgment towards others and the environment. By installing Prinsu Design Studio Products on your vehicle you assume all liability. Prinsu Design Studio will not be held liable for damages or loss associated with the installation or use of its products. Be smart, use good judgement, don't overload your vehicle to the point of inferior handling and maneuverability!

PRINSU ROOF RACK INSTALLATION GUIDE

WIND DEFLECTOR HARDWARE DIAGRAM

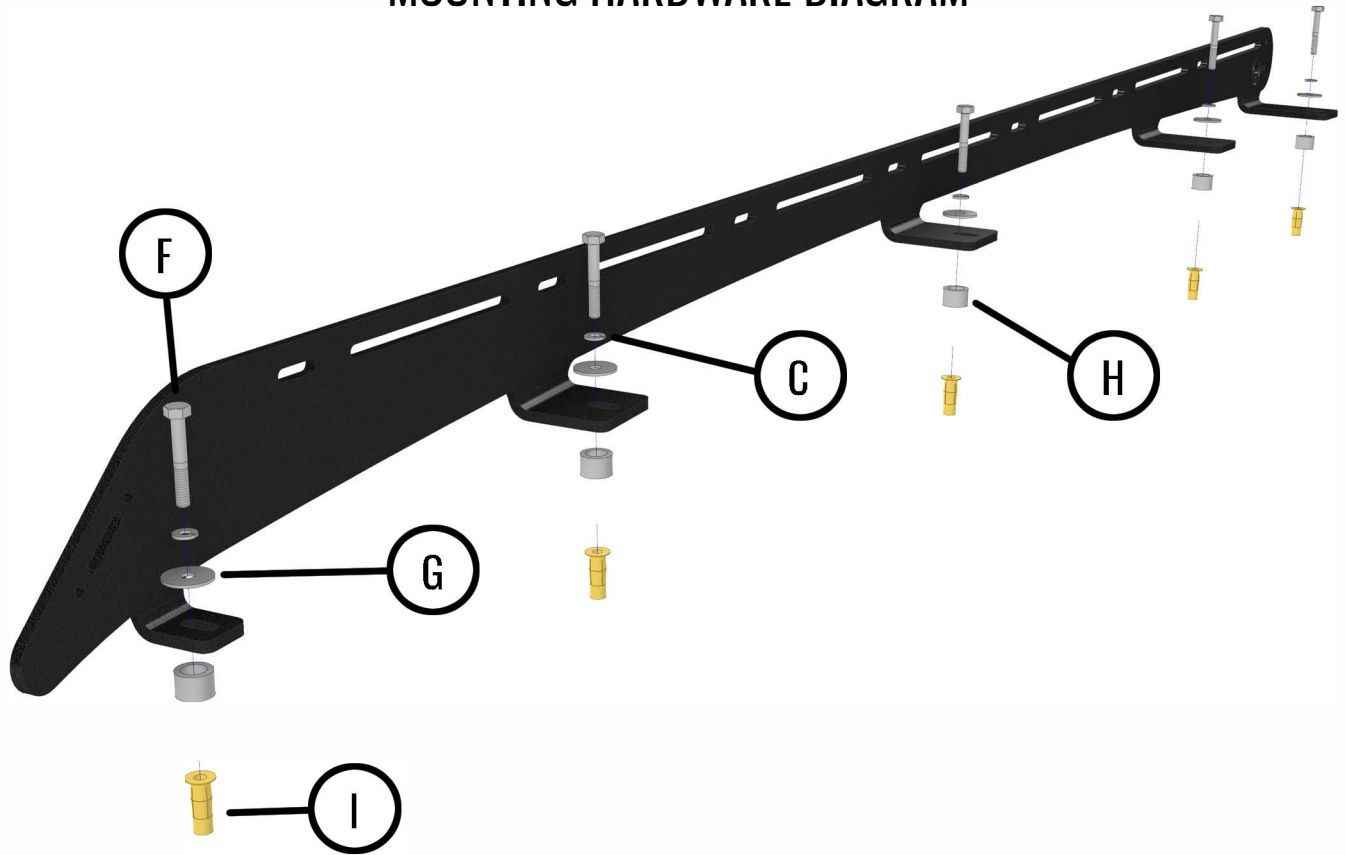


PART	SIZE	QUANTITY
A	WIND DEFLECTOR	1
B	LOCK WASHER 1/4"	10
C	SAE FLAT WASHER 1/4"	10
D	PAN HEAD SCREW 1/4" - 20 x 1/2"	10
E	1/4" - 20, 10 SERIES T-NUT	10

All products built and designed by Prinsu Design Studio are intended for off-road use and should be assembled, installed, and used according to Prinsu Design Studio's recommendations. Prinsu Design Studio products should be used safely with good judgment towards others and the environment. By installing Prinsu Design Studio Products on your vehicle you assume all liability. Prinsu Design Studio will not be held liable for damages or loss associated with the installation or use of its products. Be smart, use good judgement, don't overload your vehicle to the point of inferior handling and maneuverability!

PRINSU ROOF RACK INSTALLATION GUIDE

MOUNTING HARDWARE DIAGRAM

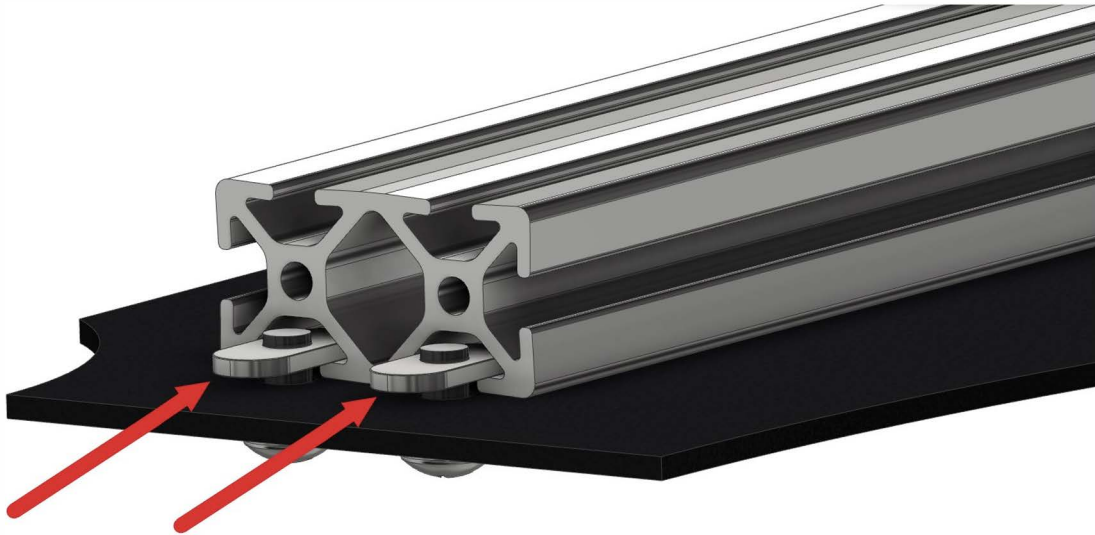


PART	DESCRIPTION	QUANTITY
C	1/4" - LOCK WASHER	10
F	1/4" - 20 x 1-3/4" - HEX CAP SCREW	10
G	1/4" x 1" OD - FENDER WASHER	10
H	1/2" - ALUMINUM SPACER	10
I	1/4" - 20, 10 SERIES - PLUSNUT	10

All products built and designed by Prinsu Design Studio are intended for off-road use and should be assembled, installed, and used according to Prinsu Design Studio's recommendations. Prinsu Design Studio products should be used safely with good judgment towards others and the environment. By installing Prinsu Design Studio Products on your vehicle you assume all liability. Prinsu Design Studio will not be held liable for damages or loss associated with the installation or use of its products. Be smart, use good judgement, don't overload your vehicle to the point of inferior handling and maneuverability!

PRINSU ROOF RACK INSTALLATION GUIDE

WIND DEFLECTOR ATTACHMENT



STEPS

1. Install the wind deflector hardware as shown on the diagram on page 4. Thread the screws just barely into the T-Nuts to begin with.
2. Lay the wind deflector on a flat surface in the orientation shown above.
3. From one end start sliding the extrusion bar so that the T-Nuts feed into the channel.
4. Once everything is lined up properly they will slide right together.
5. Now with all the T-Nuts fed into the channel and the extrusion bar and wind deflector lined up flush at both ends, turn the assembly over and tighten the screws until the lock washers are fully compressed.
6. The wind deflector assembly can now be bolted to the roof rack.

All products built and designed by Prinsu Design Studio are intended for off-road use and should be assembled, installed, and used according to Prinsu Design Studio's recommendations. Prinsu Design Studio products should be used safely with good judgment towards others and the environment. By installing Prinsu Design Studio Products on your vehicle you assume all liability. Prinsu Design Studio will not be held liable for damages or loss associated with the installation or use of its products. Be smart, use good judgement, don't overload your vehicle to the point of inferior handling and maneuverability!

PRINSU ROOF RACK INSTALLATION GUIDE

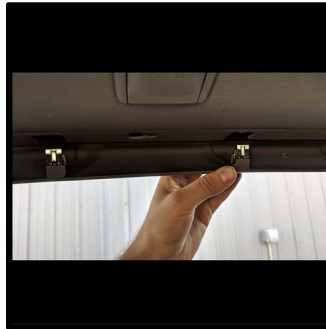
STOCK ROOF RAIL REMOVAL INSTRUCTIONS

***If you do not feel comfortable with the process outlined in this manual please seek professional installation assistance**

***Please read all instruction prior to beginning installation. Various steps may relate directly to previous or future parts of the installation process. Prinsu Design Studio is not liable for damages caused to your vehicle during the installation process**



Begin the headliner removal in the rear of the car



Pull down the upper trim piece in the rear as shown above



Next remove the now exposed plastic push tabs from the roof



Remove the screws circled above in this step and the following three steps



PRINSU ROOF RACK INSTALLATION GUIDE

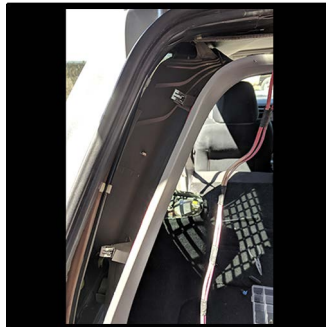


Remove the outer covers of the seat belts

Remove the plastic trim from the bottom of the C pillar



View of removed trim



The large side panel trim can now be removed by working your way around the perimeter



Remove the 15mm bolt, then the seat belt and trim behind



Remove ceiling handle covers



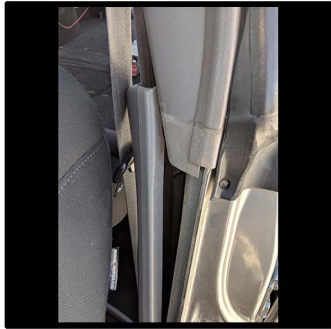
Now remove the screws securing the handles



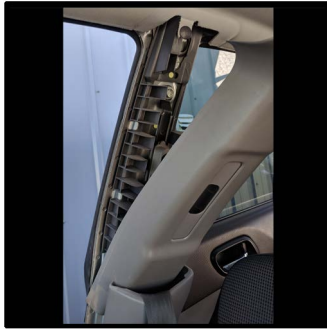
Remove the rubber trim around the rear doors

All products built and designed by Prinsu Design Studio are intended for off-road use and should be assembled, installed, and used according to Prinsu Design Studio's recommendations. Prinsu Design Studio products should be used safely with good judgment towards others and the environment. By installing Prinsu Design Studio Products on your vehicle you assume all liability. Prinsu Design Studio will not be held liable for damages or loss associated with the installation or use of its products. Be smart, use good judgement, don't overload your vehicle to the point of inferior handling and maneuverability!

PRINSU ROOF RACK INSTALLATION GUIDE



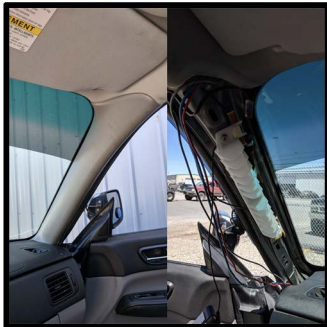
Remove trim from the bottom of the B pillar



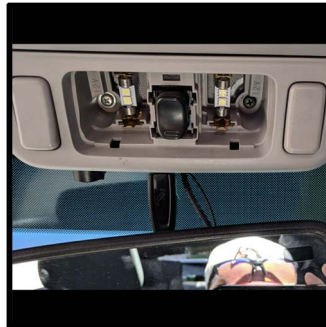
With the seatbelt removed remove the top B pillar trim



Remove rubber sunroof trim



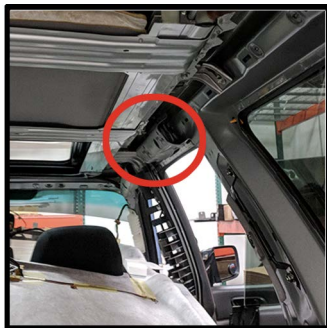
Remove the rubber trim around the front doors & then the A pillar plastics



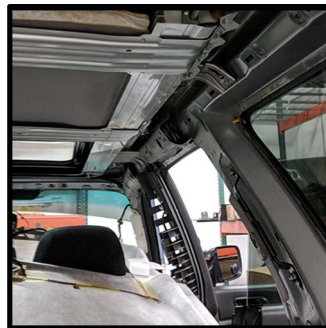
Now remove the over head dome light console



There are 5 five nuts that need removed to remove the roof rails



The bracket shown above can be removed to reach the roof rail nut above it.



Once the roof rail nut is removed make sure to re-install the support bracket before moving on



Your vehicle is now prepared to move on to the installation of your new Prinsu roof rack

All products built and designed by Prinsu Design Studio are intended for off-road use and should be assembled, installed, and used according to Prinsu Design Studio's recommendations. Prinsu Design Studio products should be used safely with good judgment towards others and the environment. By installing Prinsu Design Studio Products on your vehicle you assume all liability. Prinsu Design Studio will not be held liable for damages or loss associated with the installation or use of its products. Be smart, use good judgement, don't overload your vehicle to the point of inferior handling and maneuverability!

PRINSU ROOF RACK INSTALLATION GUIDE

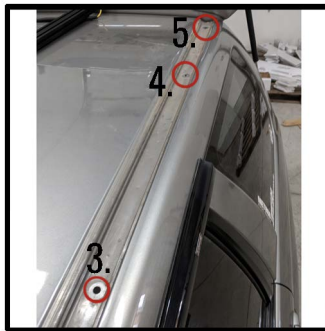
DRILLING INSTRUCTIONS

If you do not feel comfortable with the process outlined in this manual please seek professional installation assistance

Please read all instruction prior to beginning installation. Various steps may relate directly to previous or future parts of the installation process. Prinsu Design Studio is not liable for damages caused to your vehicle during the installation process



There are five mounting locations per side. Drill each hole with a 3/8" bit to ensure they are sized properly to accept the plusnut inserts



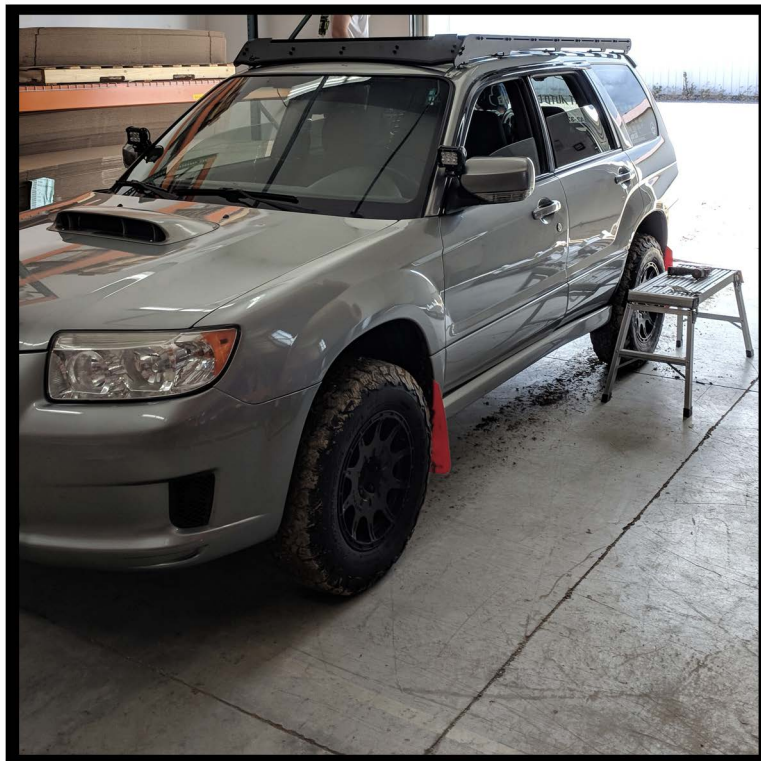
After Each hole is drilled the next step is to install the plusnuts



For more information on fastening the plusnuts please refer to the PDF on our website labeled: DRILLING AND PLUSNUT APPLICATIONS

PRINSU ROOF RACK INSTALLATION GUIDE

The preparation steps are now complete and your vehicle is ready for the Prinsu roof rack to be bolted down! Follow the diagrams on pages 1 - 5 to assemble your roof rack.



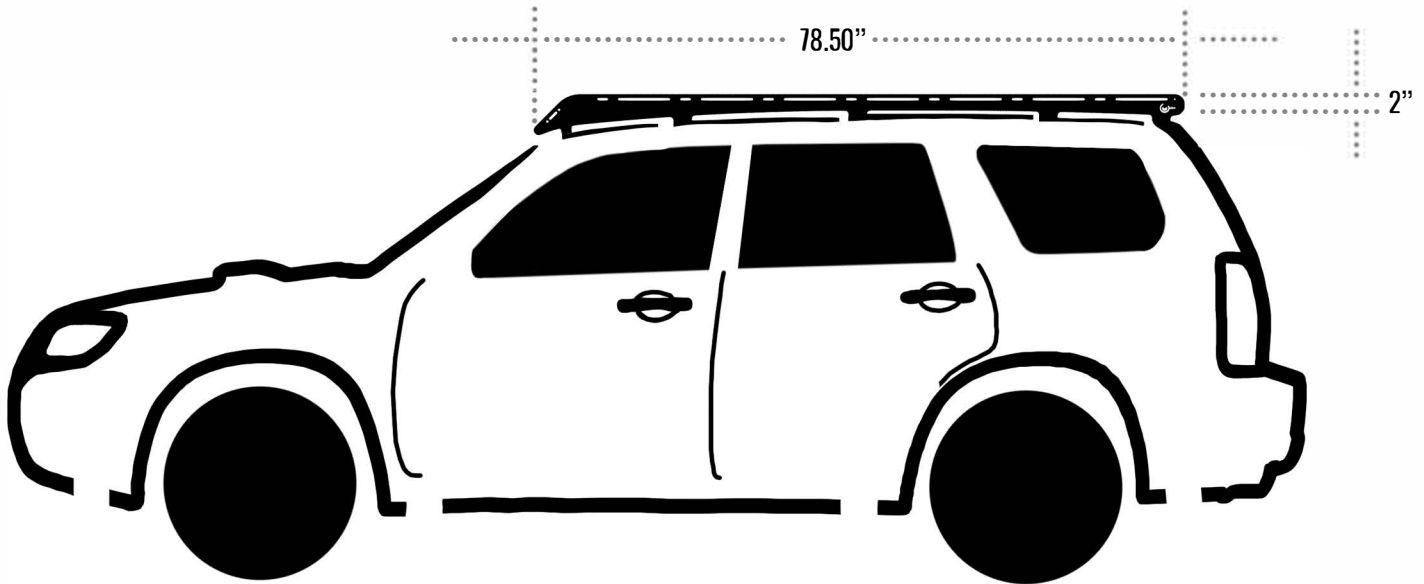
Once the rack is installed you can begin re-installing the headliner in the reverse order in which it was removed

IMPORTANT

As a precaution we recommend double checking all fasteners for tightness before driving and checking the connections again after your first drive, then periodically thereafter to insure the secure function of the roof rack is also recommended

All products built and designed by Prinsu Design Studio are intended for off-road use and should be assembled, installed, and used according to Prinsu Design Studio's recommendations. Prinsu Design Studio products should be used safely with good judgment towards others and the environment. By installing Prinsu Design Studio Products on your vehicle you assume all liability. Prinsu Design Studio will not be held liable for damages or loss associated with the installation or use of its products. Be smart, use good judgement, don't overload your vehicle to the point of inferior handling and maneuverability!

GEN 2 FORESTER ROOF RACK SPECIFICATIONS



GEN 2 SUBARU FORESTER ROOF RACK SPECIFICATIONS

FEATURE	MEASUREMENT
OVERALL LENGTH	78.50"
SIDE RAIL HEIGHT	2.00"
WEIGHT	~47 LBS
CROSS BARS	(9) 44" X (1X2)
SUNROOF FUNCTIONAL W/ RACK	YES

All products built and designed by Prinsu Design Studio are intended for off-road use and should be assembled, installed, and used according to Prinsu Design Studio's recommendations. Prinsu Design Studio products should be used safely with good judgment towards others and the environment. By installing Prinsu Design Studio Products on your vehicle you assume all liability. Prinsu Design Studio will not be held liable for damages or loss associated with the installation or use of its products. Be smart, use good judgement, don't overload your vehicle to the point of inferior handling and maneuverability!