

# MODULAR IMPLANTS FOR CERVICAL & LUMBAR FUSION



TITANIUM + BONE

TITANIUM + PEEK-OPTIMA®

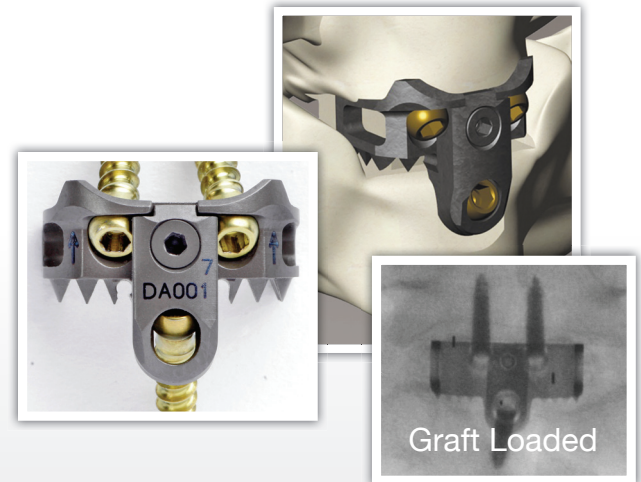
ALL PEEK-OPTIMA®†

† Refers to C-P only

## MODULAR MECHANICAL LOADING

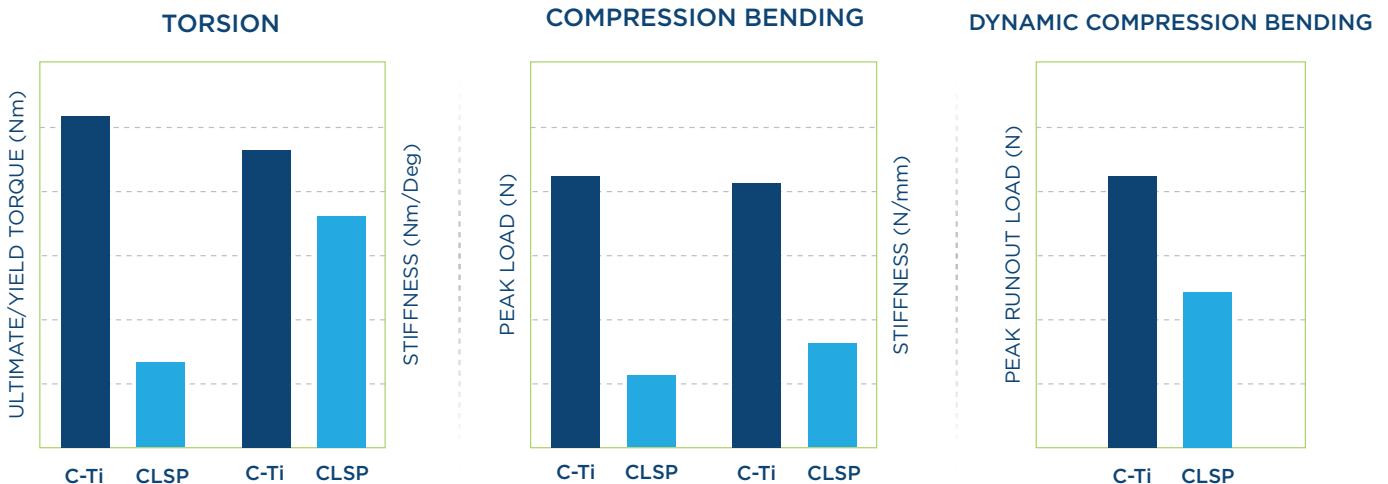
### Patented Teeth & Slot Design

- ▶ Permit 1.8 mm of Immediate Graft Loading
- ▶ Implant Teeth provide +>50% more stability††



†† Buttermann et. al. SPINE vol. 9 (2009), 564-573

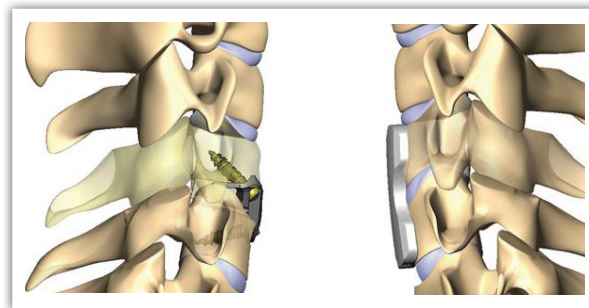
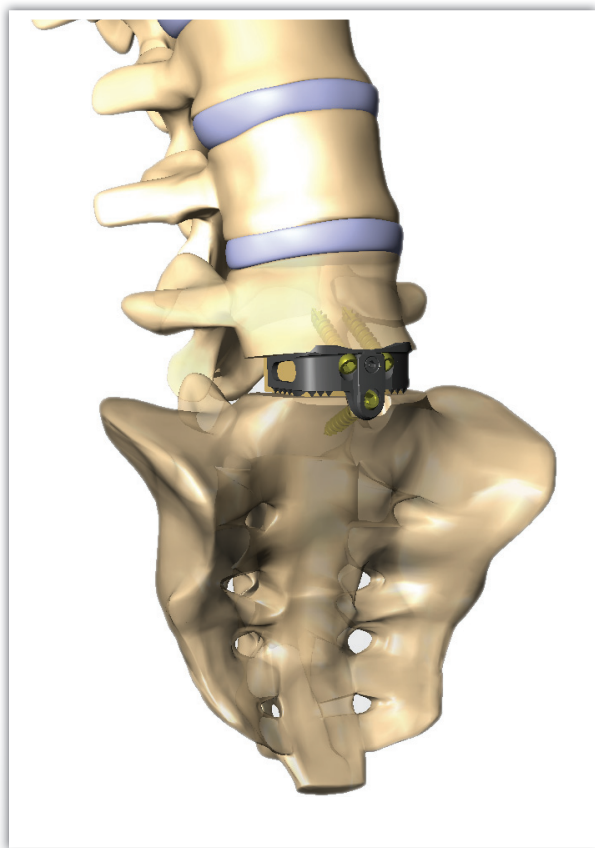
## BIOMECHANICAL TESTING



InterPlate C-Ti versus Anterior Cervical Plates

Your material. Your mechanical loading preference... Your patient.

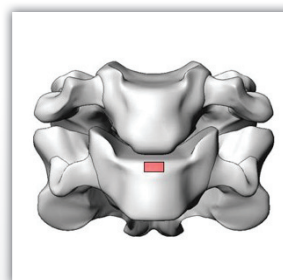
# BRIDGING FLUSH-FIT™ PROFILE



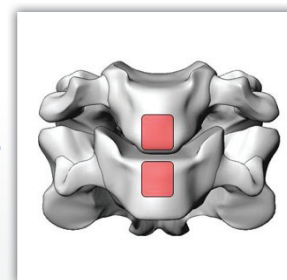
## SURGICAL SITE PREP COMPARISON

InterPlate®

Cervical Plates



Vs.

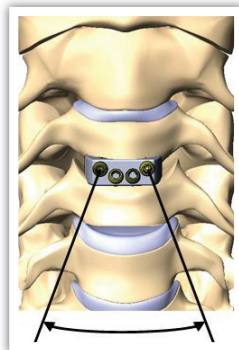
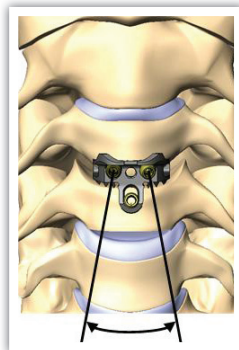


## INCISION COMPARISON

(screw trajectory)

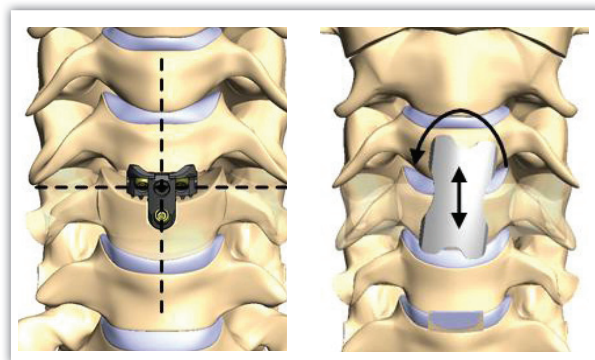
InterPlate®

Zero-P™



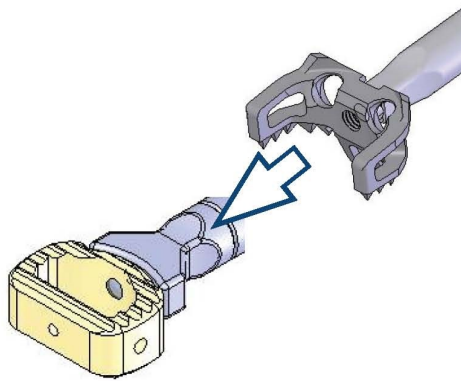
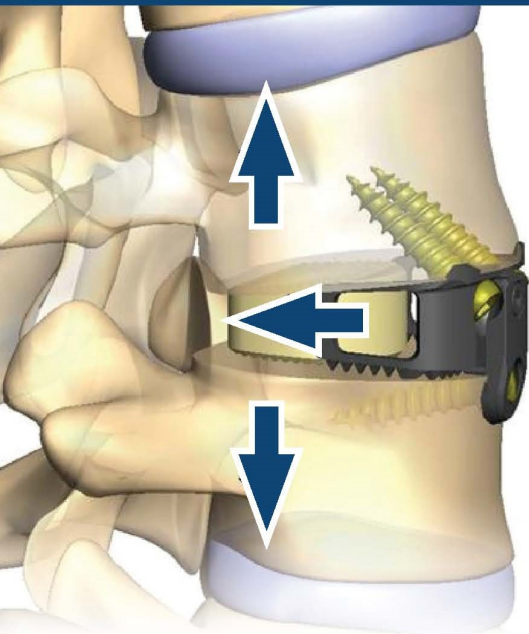
Less Retraction

More Retraction

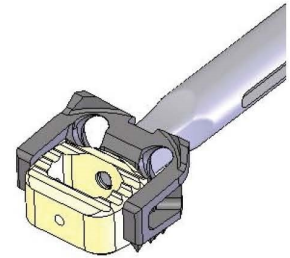


- ▶ Reduce Dysphasia Risk Factors
- ▶ Reduce Vascular Risk Factors

# SUPERIOR CORRECTIVE FORCE APPLICATIONS

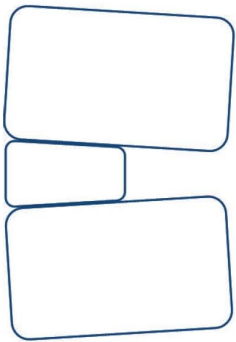


I. TWO-STEP INSERTION

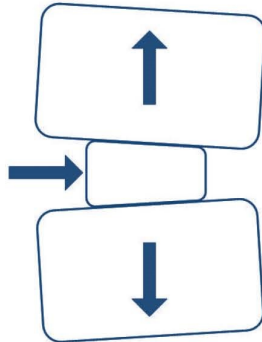


II. ALL-IN-ONE INSERTION

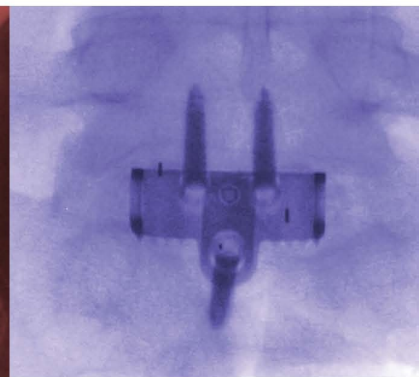
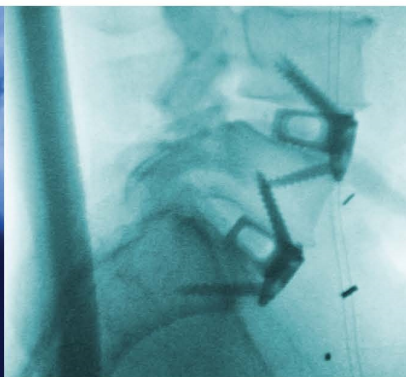
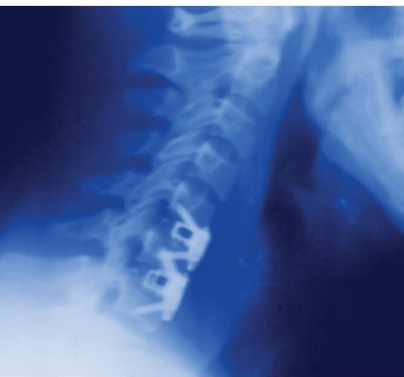
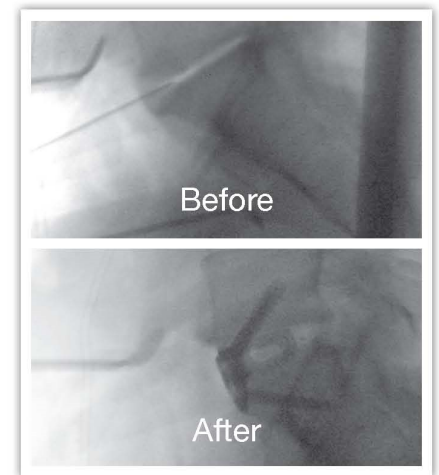
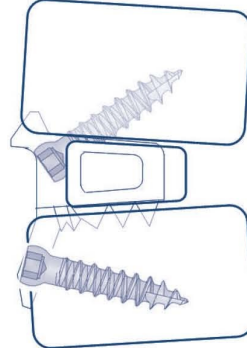
COMPETITIVE DEVICES:  
NO OPTION



WITH InterPlate:  
COUNTERSINK GRAFT  
TO DESIRED DEPTH



InterPlate PROVIDES  
FIXATION



RSB Spine, LLC  
2530 Superior Ave. #703 Cleveland, OH 44114  
866-241-2104 www.rsbspine.com



PEEK-OPTIMA and Invivio are registered trademarks of Invivio Ltd. All rights are reserved

Interplate is a trademark of RSB Spine  
Flush-Fit is a trademark of RSB Spine  
US Patent 6,984,234 6,235,034, 8,100,976, 7,985,255, 9,278,009,  
Other patents pending 9,713,537B2

MKBR 1032 Rev. 1.0

Refer to package insert for a complete list of warnings, precautions, indications, and contraindications.