

AttoLift

Wheelchair/Scooter Lift User Manual



Model CH5065



Before using this product, the user is required to read the instruction carefully, and pay special attention to the marked ★ position, to ensure correct operation.

Contents

1、	Scope of use and notes	-----	2
2、	Product structure	-----	3
3、	Technical parameters	-----	4
4、	Use instruction	-----	5

Scope of use and notes

This is an electric lifting platform with casters and the platform can be moved up and down. It can lift the article from 250mm to 900mm, with the lifting weight <50kg and article height <500mm. This product will be used on flat floor with the slope <3°.

★ Notes:

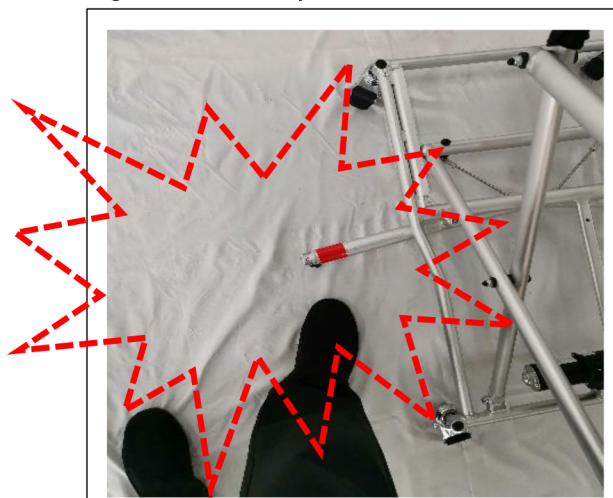
1. Lock the platform with the caster brake before the lifting operation.



2. Place the article on the center of the platform, and fix the article before the lifting operation of the platform



3. When the platform is being lifted up, the anti-tipping rod in the bottom will extend out, so the user shall be careful when walking around the platform.



Product structure



Technical parameters

- 1, Material: the support is made of aluminum alloy and it is anodized.
- 2, Structure: the support is made of four-linkage mechanism, and the anti-tipping mechanism will extend towards both sides during the lifting, playing the anti-tipping role.
- 3, Bottom wheel: 2-inch anti-skid rubber wheels in double rows.
- 4, Tabletop: made of oxford fabric being wear resistant and waterproof, with safety belt.
- 5, Motive: DC push rod motor 29V,75W, load <50KG lifting, maximum current <3A.
- 6, Power supply: matching DC power supply, voltage 24V-29V, capable of built-in power supply or being connected with proper power supply for other equipment.
- 7, Control: control handle is wired, and when the pushbutton is pressed for operation, and when it is released, the operation will then stop.
- 8, The folding size is 750*480*230mm, the unfolding size is 750*730*910mm, and the lifting height is 910mm
- 9, Packaging size 780*510*260mm
- 10, Stability: when it is lifted to the highest position, the use slope is <3°
- 11, Weight: 11KG including battery, and 10KG excluding battery

Use instruction

- 1、 The following instructions are using the EZee Fold CH4088 but are, for the most part, common to all of our power wheelchairs

1) Mounting operation



A1. Align yellow line on the tabletop with the tyre, without too much deviation.

A2. Step on the brakes on four castors, and ensure that the wheel cannot turn

A3. Untie the safety belt

A4. The wheelchair is placed on the tabletop in an inverted direction as shown in the picture with the wheels in contact with the edge of the tabletop.



A5. Buckle the safety belt



A6. Keep pressing the Up button on the controller, till the tabletop reaches the bottom surface of the trunk of the vehicle.



A7. Release the brakes on all castors.



A8. Move the platform to the side of the trunk, adjust the platform height, as shown in the picture, to the height that the anti-overturn small wheel of the wheelchair can go into the trunk...



A9. Step on the brakes on four castors, and ensure that the wheel cannot turn



A10. Place the controller into the battery pack to prevent any damage.



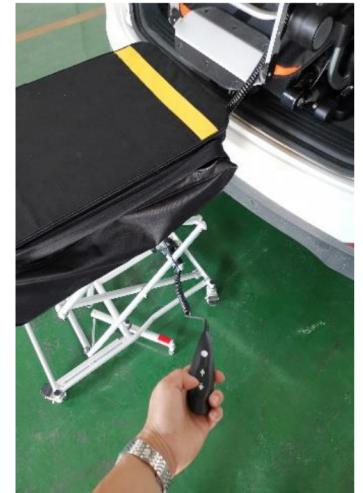
A11. Untie the safety belt



A12. Manually grasp the position in the picture to lift the wheelchair.



A13. Push it into the trunk, and guarantee that the wheelchair is stably placed. Release the brakes on all castors



A14. Keep pressing the Down button on the controller, so that the platform is totally closed.



A15. Collect the controller and power plug into the battery pack, and buckle the safety belt. Place the platform car into the trunk of the vehicle or other proper position.

2) Dismounting operation



B1. Take out the controller and power plug from the battery pack



B4. Keep pressing the Up button on the controller, till the tabletop reaches the bottom surface of the trunk of the vehicle.



B5. Adjust the position of the platform car, so that the tabletop is 50mm higher than the trunk height. Align the two yellow lines on the platform with the tyres.



B6. Step on the brakes on four castors, and ensure that the wheel cannot turn



B7. Manually grasp the position in the picture to lift the wheelchair. Move the wheelchair from the trunk to the platform car



B8. The tyres are in contact with the edge of the tabletop as shown in the picture, to ensure that the wheelchair is stably placed.



B9. Buckle the safety belt



B10. Release the brakes on all castors.



B11. Move the platform car from the vehicle, and ensure that the platform car will not collide with the vehicle during the lowering operation. Keep pressing the Down button on the controller, so that the platform is totally closed.



B12. Untie the safety belt

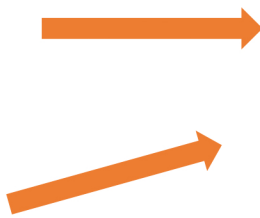
B13. When one end is lifted up, the wheelchair will be moved away from the platform after the landing of the motor wheel of the wheelchair.

B14. Buckle the safety belt

B15. Collect the controller and power plug into the battery pack, and buckle the safety belt. Place the platform car into the trunk of the vehicle or other proper position.

- ★ Notes: 1. When the wheelchair is placed on the platform, it is required to align two yellow lines, and the motor wheels shall be in contact with the platform, guaranteeing that the wheelchair is stably placed on the platform.
- 1、 When lifting the platform, it is required to ensure that the castors are braked, and avoid the movement of the platform during the lifting and lowering operation, and it is better to hold the wheelchair with one hand.
 - 2、 When the power plug is connected with the wheelchair power supply, it is required to fix the fastening tape onto the wheelchair and insert the power plug. Otherwise there will be the risk that the power plug pops out.
 - 3、 After the operation, the controller is placed into the battery pack, to avoid being broken or trampled.

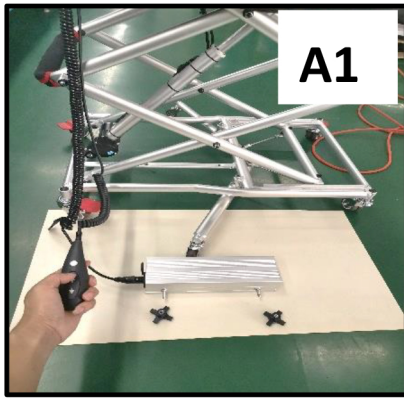
2、 External battery connection operation



The lifting platform can also be powered by the battery of the mobility device. There is one changeover plug in the accessory, and proper plug can be chosen and inserted and then placed into the battery pack.

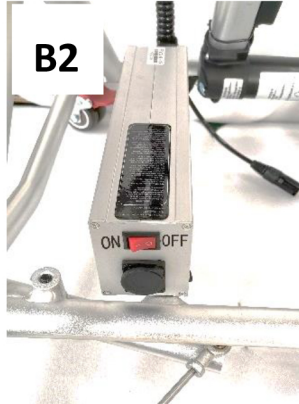
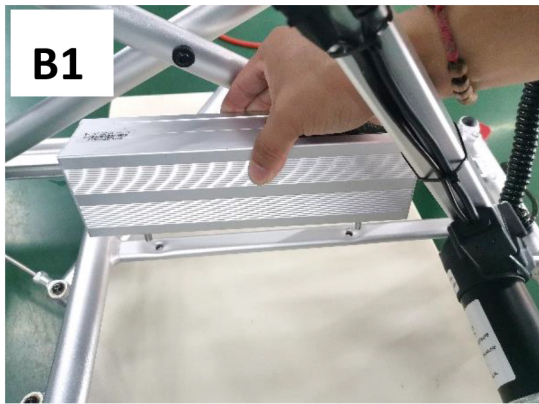
★ Batteries shall be immediately recharged after use.

3、 Battery Installation Instructions of Boarding Device



1,

As shown in the figure. Before installing the battery, connect the power plug on the boarding device to the battery, and press the UP button on the manual controller to raise the boarding device by about 50cm.



2. Insert the two screws on the battery into the corresponding holes on the frame and tighten the knob. Make sure that the battery is installed in the same direction as Figure B.



3. In order to prevent the power plug from falling off during use, please fasten the buckle and ensure that the power plug is tightly inserted. Turn on the power switch

4. When the boarding device is not used for a long time, please turn off the power switch.

4、 Battery Charging Instructions



As shown in Figure B, connect one end of the charger to the battery and the other end to the charging plug. The red light on the charger indicates that it is charging and the green light indicates that it is fully charged.



2, If the battery is mounted on the boarding device, you only need to pull out the power plug and insert the charger plug to charge the battery.

Notes:

1. Fully charge the battery first when it is not used for a long time. Charge the battery at least once a month, and each time when you charge it, please wait the light turns green.
2. The battery must be charged with a matching charger to avoid battery damage.
3. The charging environment must be dry, ventilated, and free of inflammable and explosive materials to prevent fire.
4. This battery cannot be used in other equipment to avoid battery damage.