



Resin[®]
TEAK

MODERN FOLDING
ADIRONDACK CHAIR

Care Instructions

ResinTeak furniture is manufactured to be easy to maintain only require periodic cleaning with mild soap and water. To clean; mix a 3 (warm water) to 1 (mild soap) ratio in a bucket and with a stiff bristle brush gently scrub in the direction of the grain; removing any accumulated dirt, grease, surface stains and/or dust from the ResinTeak surface.

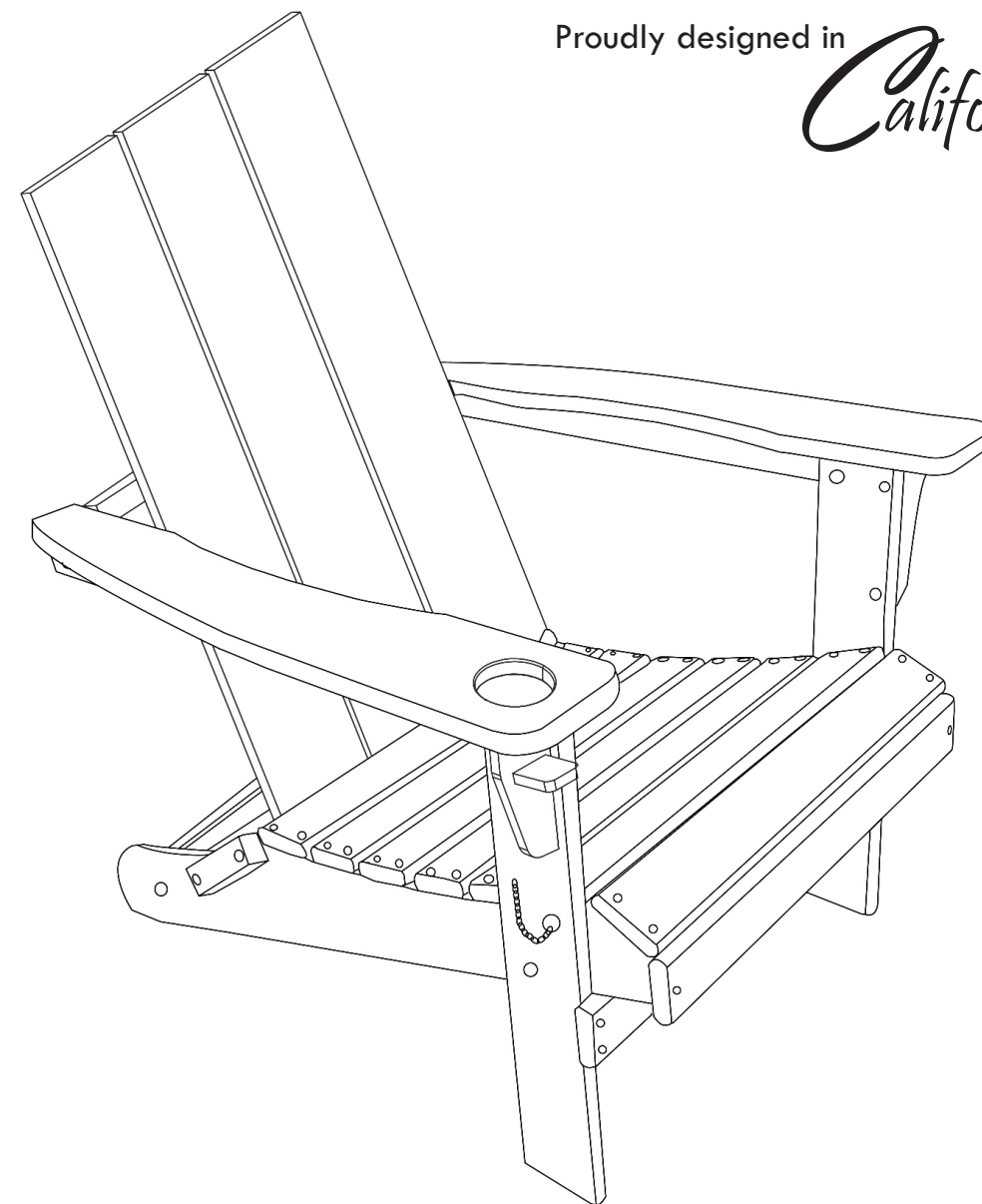
Warranty

Your ResinTeak furniture includes an industry surpassing Limited Lifetime Warranty. Please review full warranty details and register your product via www.resinteak.com/warranty

Thank You for choosing ResinTeak

We are certain that our eco-conscious plastic furniture will bring you many years of enjoyment. At ResinTeak™, we are determined to help reduce the impact harmful plastic pollution is taking on our planet, together with our production factories we are steadily increasing the use of recycled plastics in our furniture collections. We hope to further develop this technology advancement so our furniture production is comprised of 100% recycled plastics without the need for raw virgin materials or compromising the integrity of form, function, and beauty that our furniture is known for.

Proudly designed in
California



California Based, Service You Can Count on.



949.316.0010 support@resinteak.com
Monday-Friday 9:00am to 5:00pm PST



Resin[®]
TEAK



Scan QR Code for Installation Video

All Weather Indoor/Outdoor Chair
Model# RSTK-FLDG-MND

For your safety and the safety of others, please read all the instructions and warnings in this manual carefully.

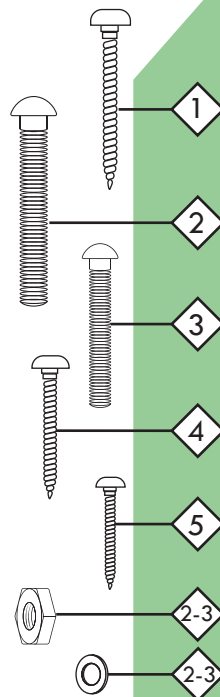
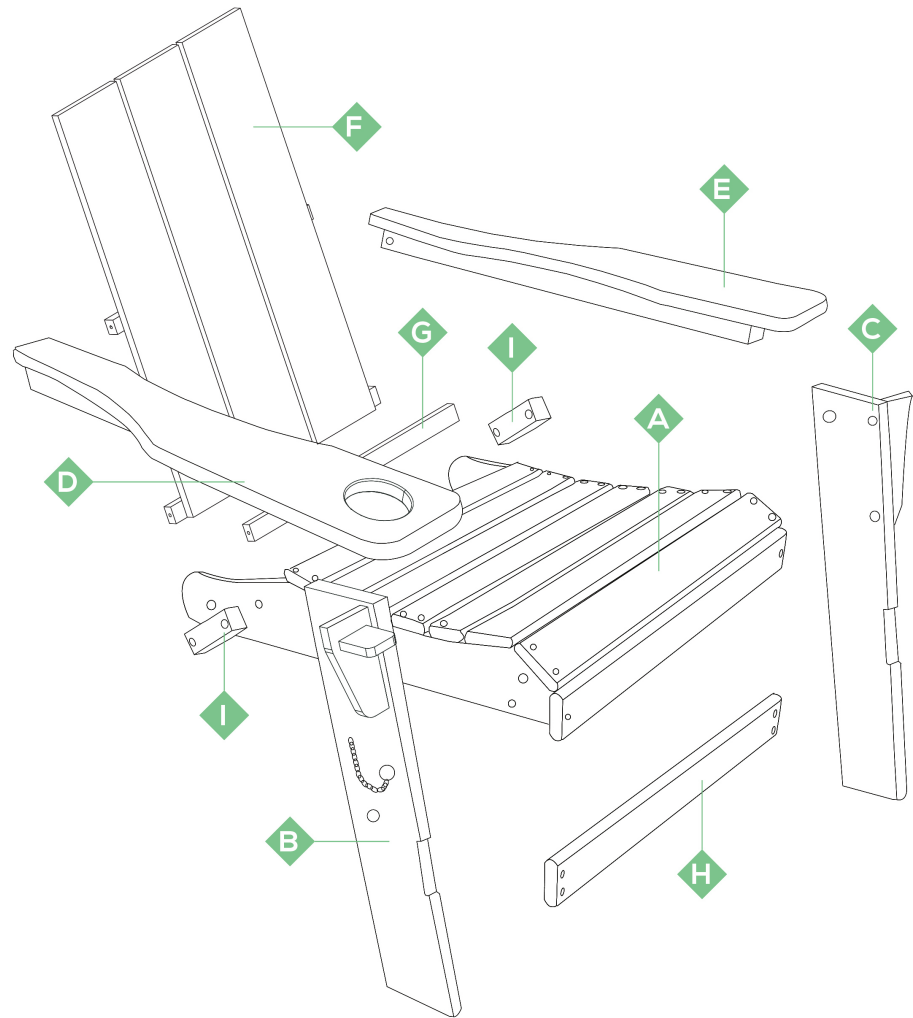


Assembly Instructions

This Package will contain small sharp parts/tools/hardware – PLEASE KEEP AWAY FROM CHILDREN.

- Read through the assembly instructions fully before beginning.
- Check that all listed parts and hardware are included before beginning assembly.
- Avoid accidentally discarding small parts – DO NOT discard packaging until assembly is complete.
- Avoid personal injury and/or damage to product - Use CAUTION & CARE when lifting.
- Assembly time is approximately 20 minutes - Two adults are recommended to complete assembly.

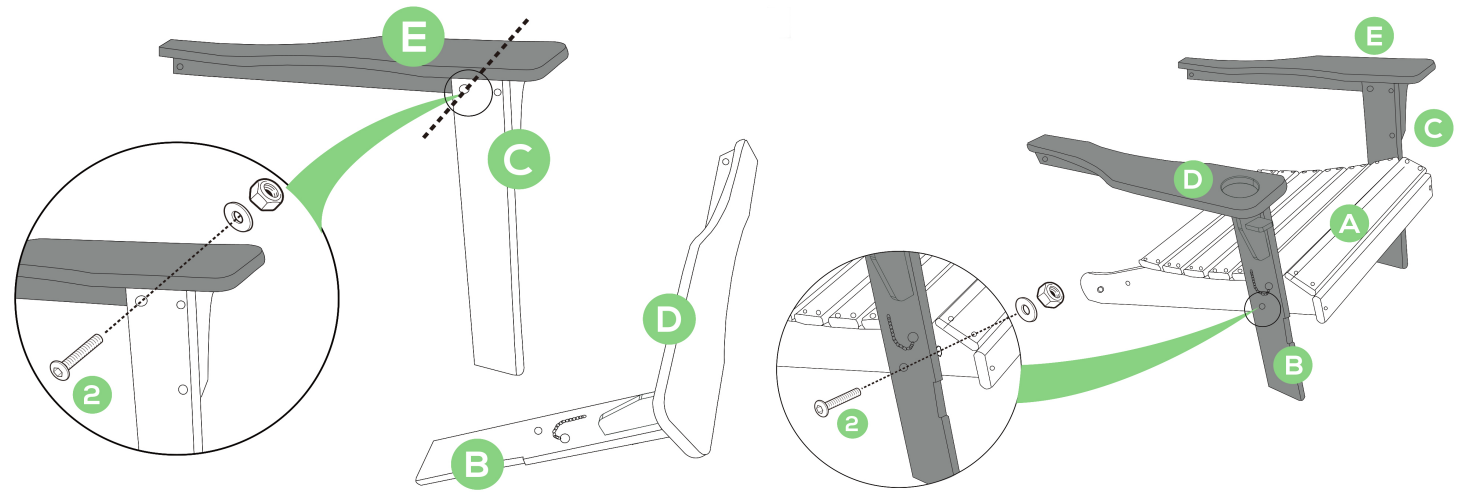
• AVOID PERSONAL INJURY & DAMAGE TO PRODUCT – ENSURE TO LOCK ASSEMBLED CHAIR BEFORE USE
PLEASE SEE STEP 6 FOR FULL DETAILS



Assembly Tools Included

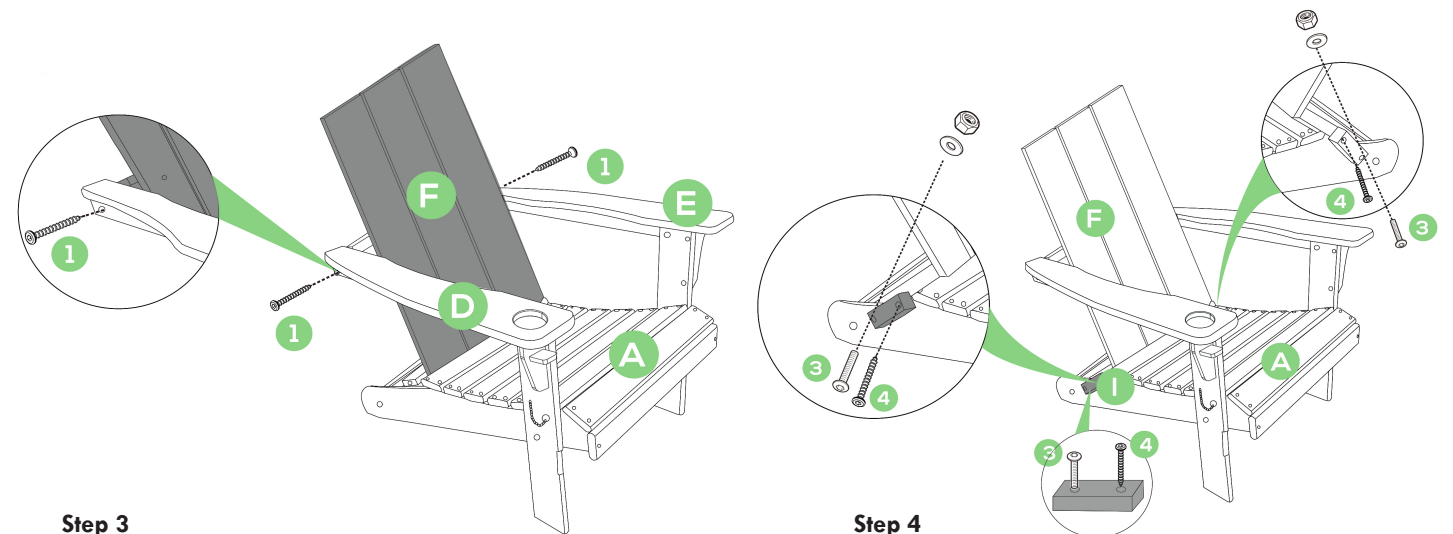
Package Contents

Part	Part Name	Qty	Part	Part Name	Qty
A	Seat	1	1	M 6 x 80 Screw	2
B	Right Leg	1	2	M 6 x 60 Bolt set	4
C	Left Leg	1	3	M 6 x 50 Bolt set	2
D	Right Arm	1	4	M 6 x 50 Screw	4
E	Left Arm	1	5	M 6 x 30 Screw	4
F	Back Panel	1			
G	Back Beam	1			
H	Front Beam	1			
I	Folding Bracket	2			



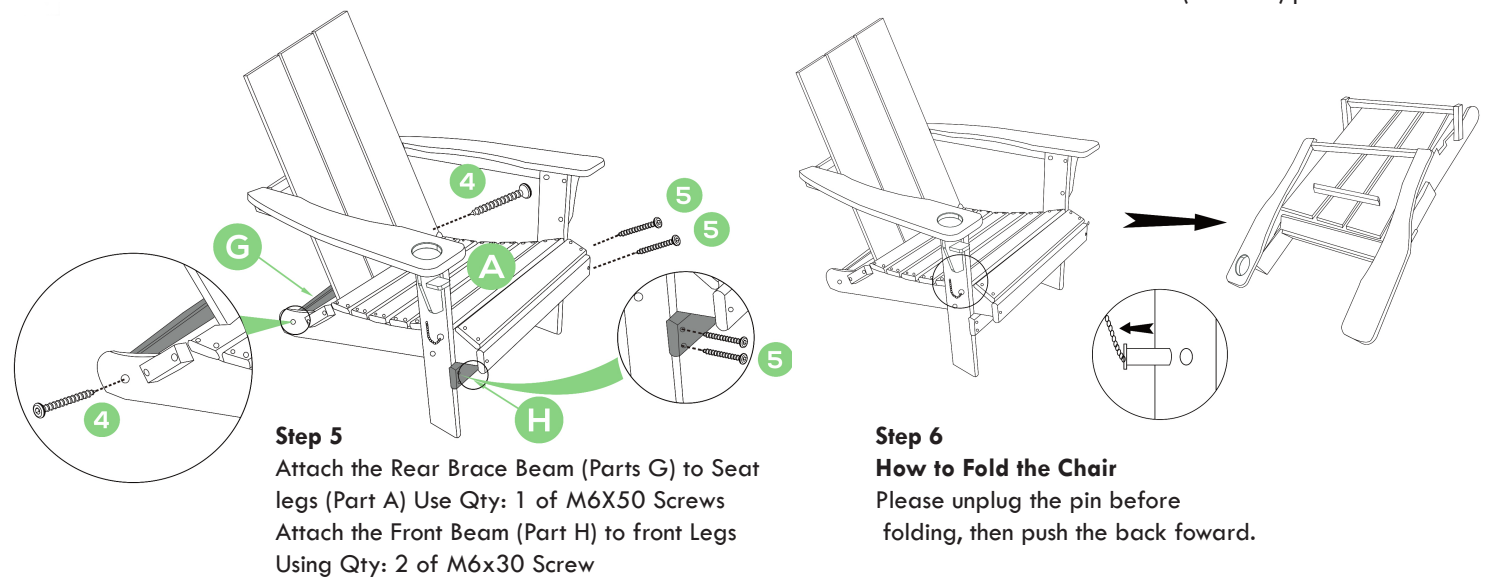
Step 1
Attach the Arm (Part E) to Front Legs (Part B and C)
Use Qty: 1 of M6x60 Bolt (Part 2), Washer (Part 2) and Lock Nut (Part 2) per side to secure both Right and Left side legs.

Step 2
Attach the Legs (Part C-B) to Seat (Part A)
Use Qty: 1 of M6x60 Bolt (Part 2), Washer (Part 2) and Lock Nut (Part 2) per side to secure both Right and Left side legs.



Step 3
Attach the Back (Part F) to seat and armrests.
Start with securing the Armrests (Parts D and E) to Back (Part F) Use Qty: 1 of M6x80 Screw.

Step 4
Attach the folding Bracket (Part I) per side
Followed by attaching the Back (Part F) to the Seat legs (Part A) Use Qty: 1 of M6x50 Bolt & M6x50Screw (Part 3-4) per side.



Step 5
Attach the Rear Brace Beam (Parts G) to Seat legs (Part A) Use Qty: 1 of M6X50 Screws
Attach the Front Beam (Part H) to front Legs Using Qty: 2 of M6x30 Screw

Step 6
How to Fold the Chair
Please unplug the pin before folding, then push the back forward.