



Resin[®]
TEAK

NEW HERITAGE

Care Instructions

ResinTeak furniture is manufactured to be carefree and should only require periodic cleaning with mild soap and water. To clean; mix a 3 (warm water) to 1 (mild soap) ratio in a bucket and with a stiff bristle brush gently scrub in the direction of the grain; removing any accumulated dirt, grease, surface stains and/or dust from the ResinTeak surface.

Warranty

Your ResinTeak furniture includes an industry surpassing Limited Lifetime Warranty. Please review full warranty details and register your product via www.resinteak.com/warranty

Thank You for choosing ResinTeak

We are certain that our eco-conscious plastic furniture will bring many years of enjoyment. At ResinTeak™, we are determined to help reduce the impact harmful plastic pollution is taking on our planet, together with our production factories we are steadily increasing the use of recycled plastics in our furniture collections. We hope to further develop the technology advancements so our furniture production is comprised of 100% recycled plastics without the need for raw virgin materials or compromising the integrity of form, function, and beauty our furniture is known for.

California Based, Service You Can Count on.



949.316.0010 support@resinteak.com
Monday-Friday 9:00am to 5:00pm PST



Proudly designed in
California



Resin[®]
TEAK



Scan QR Code for Installation Video

For your safety and the safety of others, please read all the instructions and warnings in this manual carefully.

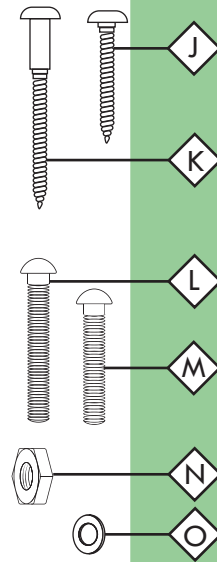
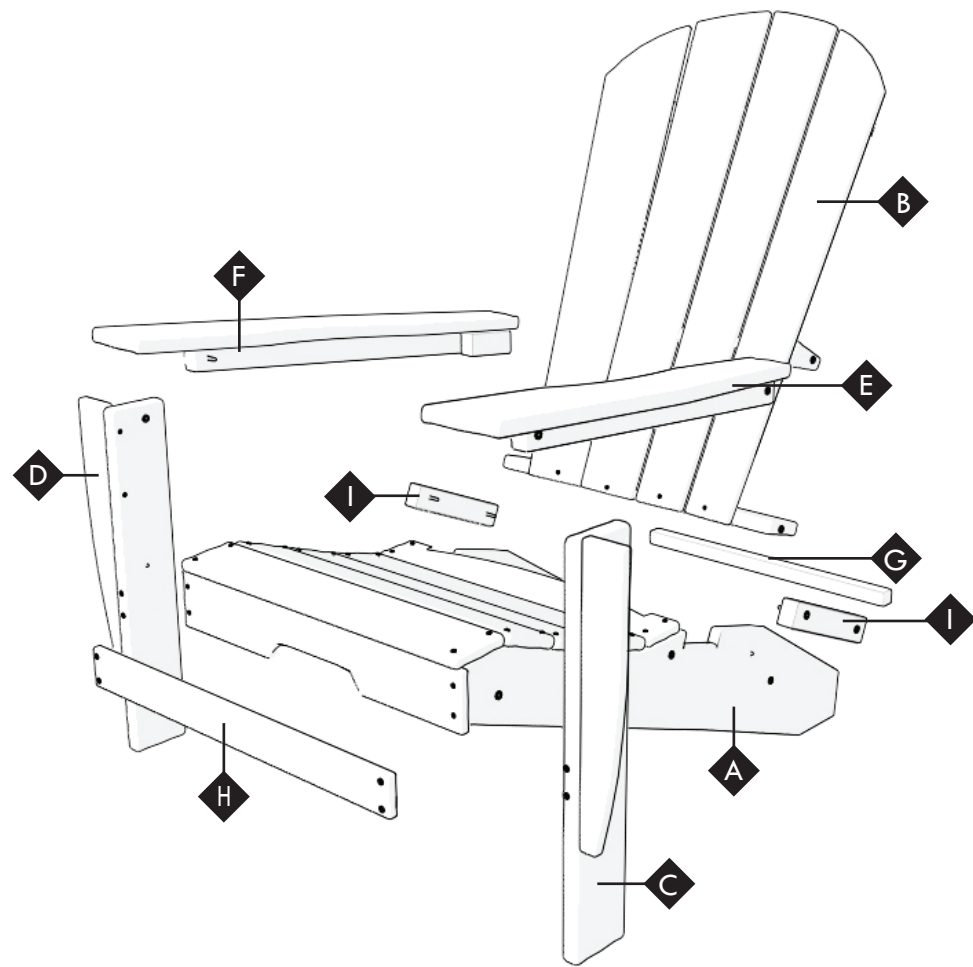


Pre-Assembly Preparation

This Package will contain small sharp parts/tools/hardware – PLEASE KEEP AWAY FROM CHILDREN.

- Read through the preparation and assembly instructions fully before beginning assembly.
- Check that all listed parts and hardware are included before beginning assembly.
- Avoid accidentally discarding small parts – DO NOT discard packaging until assembly is complete.
- Avoid personal injury and/or damage to product - Use CAUTION & CARE when lifting.
- Assembly time is approximately 30 minutes - Two adults are recommended to complete assembly.

• AVOID PERSONAL INJURY & DAMAGE TO PRODUCT – ENSURE TO LOCK ASSEMBLED CHAIR BEFORE USE
PLEASE SEE STEP 6 FOR FULL DETAILS

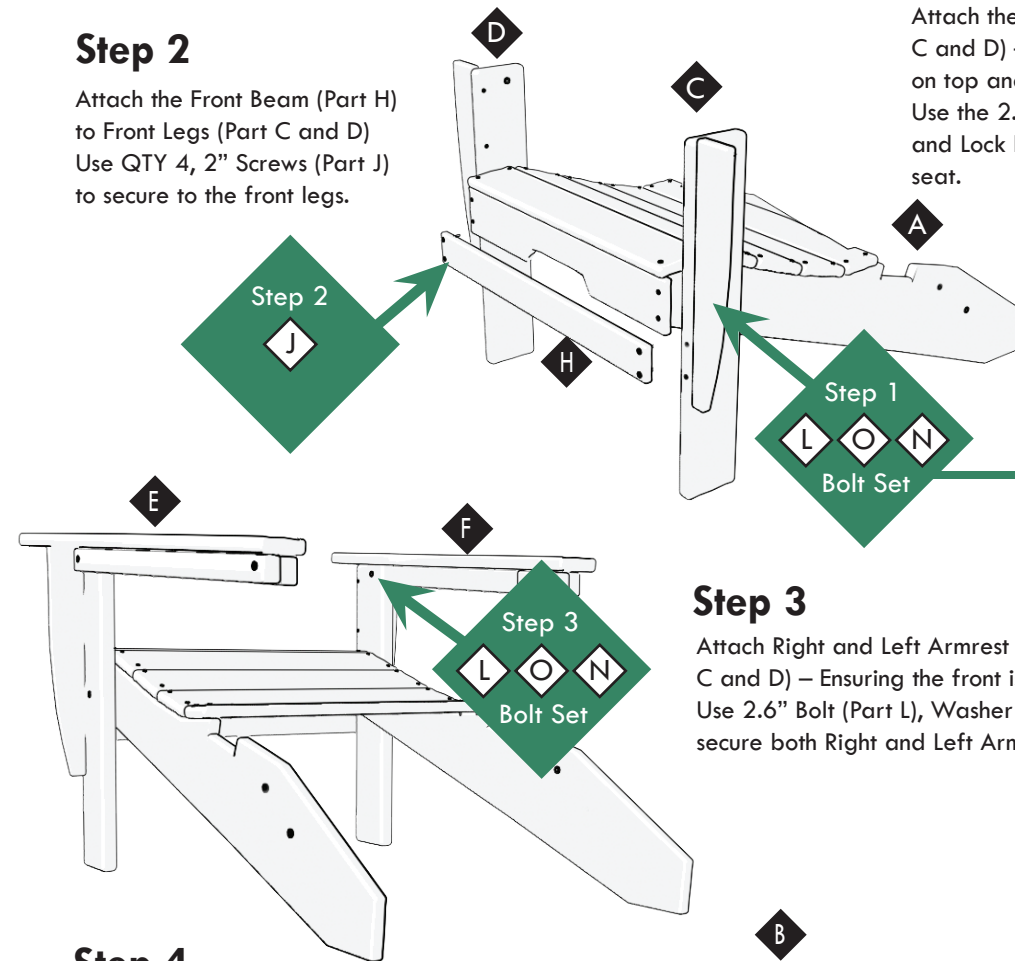


Package Contents

Part	Part Name	Qty	Part	Hardware List	Qty
A	Seat	1	J	2" Screw	8
B	4-Slat Back Panel	1	K	3.2" Screw	2
C	Left Front Leg	1	L	2.6" Bolt	4
D	Right Front Leg with Metal Lock Insert	1	M	2" Bolt	2
E	Left Armrest	1	N	Lock Nut	6
F	Right Armrest	1	O	Washer	6
G	Rear Beam	1		Wrench	1
H	Front Beam	1		Allen Wrench	1
I	Folding Hinge Bracket	2			

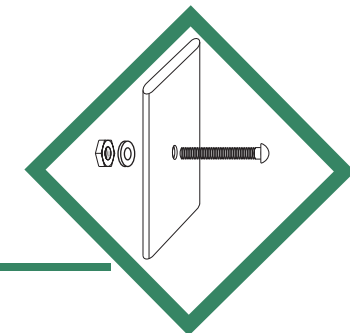
Step 2

Attach the Front Beam (Part H) to Front Legs (Part C and D) Use QTY 4, 2" Screws (Part J) to secure to the front legs.



Step 1

Attach the Seat (Part A) to Front Legs (Part C and D) – Ensuring the armrest support is on top and facing forward as illustrated. Use the 2.6" Bolts (Part L), Washers (Part O) and Lock Nuts (Part N) to secure each leg to seat.



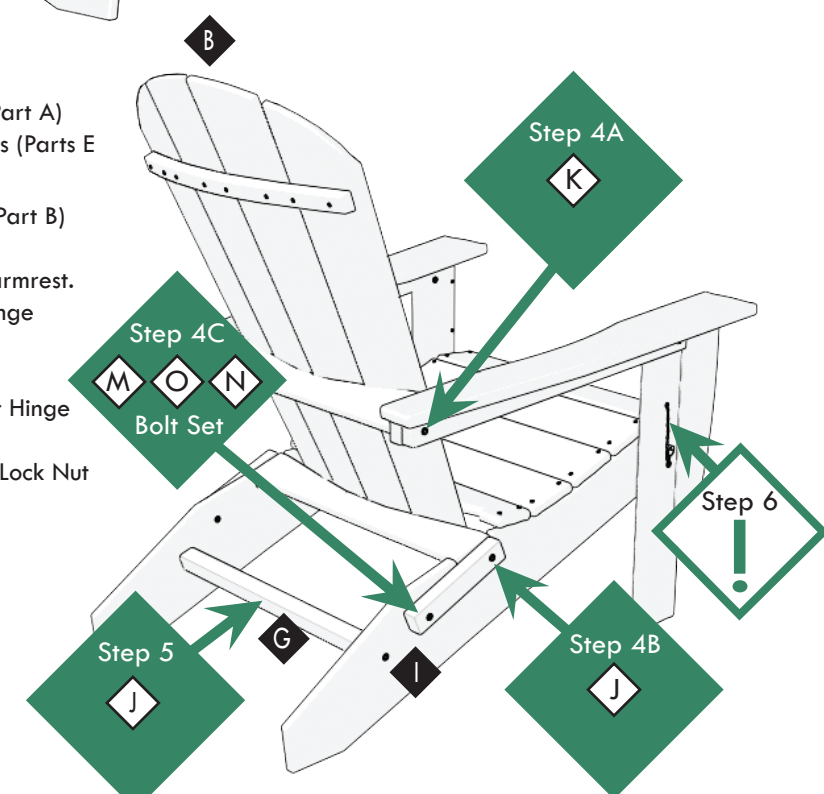
Step 3

Attach Right and Left Armrest (Parts E and F) to Front Legs (Part C and D) – Ensuring the front is facing forward as illustrated. Use 2.6" Bolt (Part L), Washer (Part O) and Lock Nut (Part N) to secure both Right and Left Armrests.

Step 4

Attach the 4-Slat Back Panel (Part B) to Seat (Part A) with Folding Bracket Hinge (Part I) and Armrests (Parts E and F)

- 4A.** Start with securing the 4-Slat Back Panel (Part B) to Armrests (Part E and F). Use the 3.2" Screw (Part K) to secure to each armrest.
- 4B.** Follow by attaching the Folding Bracket Hinge (Part I) to the 4-Slat Back Panel (Part B) base. Use the 2" Screw (Part J) to secure.
- 4C.** Complete by attaching the Folding Bracket Hinge (Part I) to Seat (Part A) back legs. Use the 2" Bolt (Part M), Washer (Part O) and Lock Nut (Part N) to secure.



Step 5

Attach the Rear Beam (Part G) to Seat (Part A) Use the 2" Screw (Part J) to secure the Rear Beam (Part G) in between the Seat (Part A)

Step 6

!Safety Notice!

Before Sitting on the chair ensure to lock the Right Front Leg (Part D) to prevent the chair from collapsing/folding. Use the Metal Insert Rod attached to Right Front Leg (Part D) to secure the Seat (Part A) to Right Front Leg (Part D) by inserting the rod into the pre-drilled hole (as illustrated)