



Goldfinger + Tate collection



Dining table

Bench

Stool



Goldfinger + Tate dining table

With contemporary, chunky silhouettes and softly rounded edges, this dining table is the perfect centrepiece for a modern space.

Made from solid British ash sourced from local trees felled to control the spread of ash dieback, each table features the GPS coordinates of where the trees once stood. Collaboratively designed by Goldfinger, Tate and Holland Harvey Architects for Corner at Tate Modern.

SIZES AVAILABLE

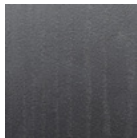
Large — 240cm L x 90cm W x 76cm H — Seats 8-10

Medium — 210cm L x 90cm W x 76cm H — Seats 6-8

WOOD OPTIONS



Ash (natural)



Ash (black stain)

FINISHES

Natural — Rubio Monocoat 5% White

Black — Liberon Palette Ebony Wood Dye / Bona Traffic HD

ORDERING & LEAD TIME

We welcome bespoke dimensions and custom adjustments.

Please get in touch to discuss your specific requirements.

Please allow 10-12 weeks for production and delivery.

DIMENSIONS





Goldfinger + Tate bench

Designed to fit perfectly with the Goldfinger + Tate dining table, this contemporary bench also works equally on its own in a hall or entryway.

Crafted from solid British ash sourced from local trees felled to control the spread of ash dieback, each bench features the GPS coordinates where the trees once stood. Collaboratively designed by Goldfinger, Tate and Holland Harvey Architects for Corner at Tate Modern.

SIZES AVAILABLE

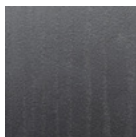
Large — 180cm L x 35cm W x 45cm H — Seats 3-4

Medium — 120cm L x 35cm W x 45cm H — Seats 2-3

WOOD OPTIONS



Ash (natural)



Ash (black stain)

FINISHES

Natural — Rubio Monocoat 5% White

Black — Liberon Palette Ebony Wood Dye / Bona Traffic HD

ORDERING & LEAD TIME

We welcome bespoke dimensions and custom adjustments.

Please get in touch to discuss your specific requirements.

Please allow 10-12 weeks for production and delivery.

DIMENSIONS





Goldfinger + Tate stool

With its modern profile, chunky legs and slim seat, this stool creates a distinctive silhouette. The versatile design works well with our Goldfinger + Tate dining table or as a standalone accent piece.

Crafted from solid British ash sourced from local trees felled to control the spread of ash dieback, each stool features the GPS coordinates where the trees once stood. Collaboratively designed by Goldfinger, Tate and Holland Harvey Architects for Corner at Tate Modern.

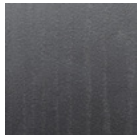
SIZES AVAILABLE

40cm L x 35cm W x 45cm H — Seats 1

WOOD OPTIONS



Ash (natural)



Ash (black stain)

FINISHES

Natural — Rubio Monocoat 5% White

Black — Liberon Palette Ebony Wood Dye / Bona Traffic HD

ORDERING & LEAD TIME

We welcome bespoke dimensions and custom adjustments. Please get in touch to discuss your specific requirements. Please allow 10-12 weeks for production and delivery.

DIMENSIONS

