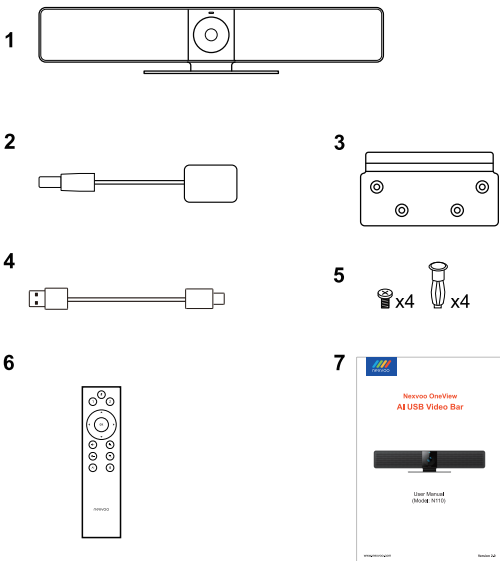


Nexvoo OneView AI USB Video Bar



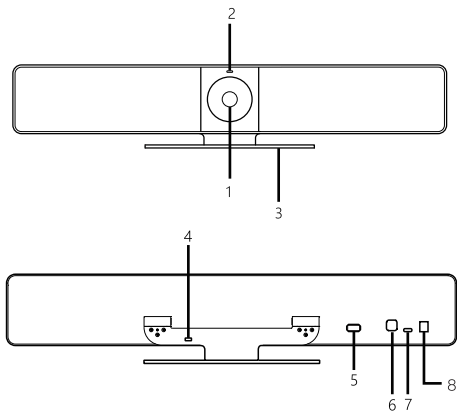
User Manual
(Model: N110)

Package Includes




1. OneView N110
2. Power adapter
3. Wall mounting bracket
4. 5m USB-C cable
5. Wall mounting hardware
6. Remote control
7. User Manual


OneView N110 Introduction



1. 4K HDR Camera
2. LED indicators
3. Base bracket
4. Kensington lock
5. USB-A, for connecting external extension devices
6. Bluetooth key
7. USB-C, for connecting PC computers
8. Power Key

LED indicator status

	The green LED indicator is on when the camera is turn on
	The green LED indicator blinks when the device is searching for the remote control
	The green LED indicator blinks for 3 seconds when the device is connected to the remote control
	The green LED indicator blinks for 3 seconds when the AI function is turned on

	The red LED indicator is off when the camera is turn off
	The red LED indicator blinks when the microphone is muted
	The red LED indicator blinks for 3 seconds when the AI function is turned off

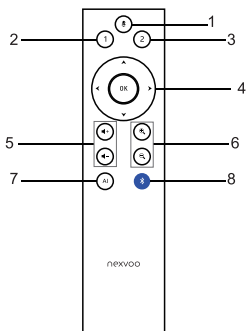
The actual color of LED indicator may be slightly different and shall prevail.

Connection with Bluetooth remote control

- N110 will automatically perform Bluetooth search after power-on. If the remote control is found, the pairing connection will be automatically performed.
- If the remote control is not found within 5 minutes, the search will be stopped. Please short press the Bluetooth button of the device to restart the search.
- If N110 has been paired with the remote control, you can press the Bluetooth button for 3 seconds to delete the pairing information. After deleting the pairing information, you can pair and connect with the new remote control.
- If N110 has been paired but failed to connect with the remote control successfully, short press the Bluetooth button to make the device search for the remote control again.


Remote Control Features

The following figure and table identify the functions of the keys on the remote control.



1. Mute
2. Camera Preset 1
3. Camera Preset 2
4. Pan and Tilt
5. Volume up/down
6. Zoom in/out
7. AI Switch
8. Bluetooth

LED indicator status

	The red LED indicator lights for 3 seconds when the remote control is turned on
	The red LED indicator lights for 3 seconds when long press Bluetooth key to clear pairing information
	The red LED lights up for 3 seconds when the remote control is connected
	The red LED indicator lights for 3 seconds when long press preset 1 and 2 to save the successful lens position

Connection with N110

- The powered on remote control will be automatically paired with the OneView N110. If it is not paired successfully, please short press the Bluetooth button of OneView N110 and remote control to pair and connect again.
- If the remote control is paired, you can press the Bluetooth button for 3 seconds to delete the pairing information. After deleting the pairing information, the remote can be paired with the new N110 again.
- The remote control is paired but not connected to the N110. After 1 minute, it enters the sleep state. Please press any key to wake up the remote control and reconnect it.
- The remote control can only be paired and connected by one N110.

Advanced AI Technologies

Advanced AI technologies includes Auto Framing and Speaker Tracking functions

The Auto Framing is based on participants' face detection, realizing real-time detection and position tracking of everyone in the meeting, and can automatically adjust the camera according to the number of participants and changes in position, so that the screen covers all participants and their position. Besides, based on the Auto Framing function, the device adds a speaker tracking function. In a meeting the camera lens can be individually focused on the speaker, giving the speaker the best close-up shot of a single person.

You can turn off or turn on by AI switch button through Remote Control.

Placement

We recommend placing the camera as close to eye level as possible.

You can get the best performance.

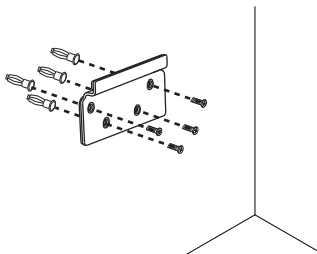
1. Placement on table:

Place on a table or shelf near the monitor.

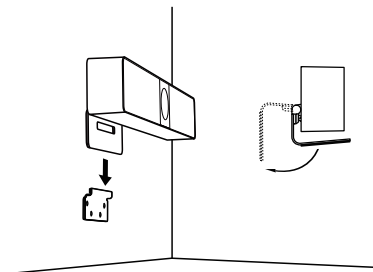
2. Mount on the wall:

a. Attach bracket to the wall.

Please use the screws which are in the box or appropriate type of screws for your wall type.

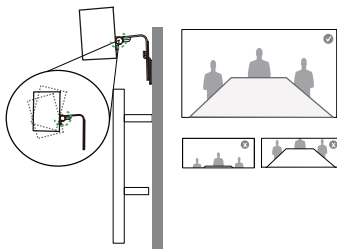


b. Attach the camera to the bracket.



3. Place on or under display:

Adjust the equipment angle to make all participants in the picture when AI is off.



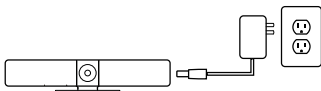
Please contact us to choose Nexvoo optional accessory

Connection

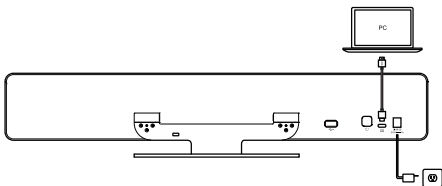
Connecting OneView N110 is the same whether you plan on using a dedicated PC or Mac in the room, or your team members bring a laptop to the room to run the meeting.

This is normal setup step as below, may have a little different depends on your device.

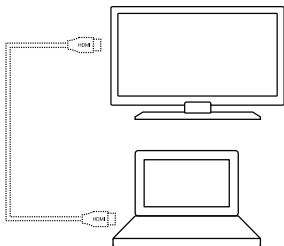
1. Plug N110 into power.



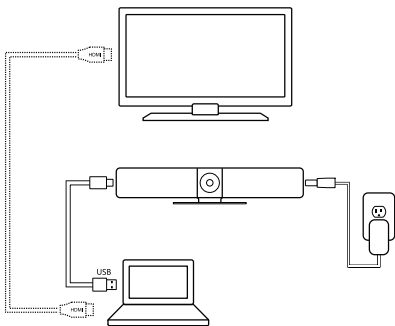
2. Connect the USB-C cable from N110 to your PC or Mac.



3. If you need to cast a screen, please connect your PC computer or Mac to the display via HDMI or RGB cable



4. Diagram of all connections.



5. Enter your software settings, then find audio and video equipment.

Select Nexvo N110 as the default device and click “Save”.

Starting A Video Call

After installing OneView N110 and ensuring it is the default device in your video conferencing application, simply start the application in the normal manner and enjoy the benefits of improved audio and video.

Please go to www.nexvoo.com if you want to learn more.

Web Management

You can configure the Nexvoo OneView USB video bar on the Web management.

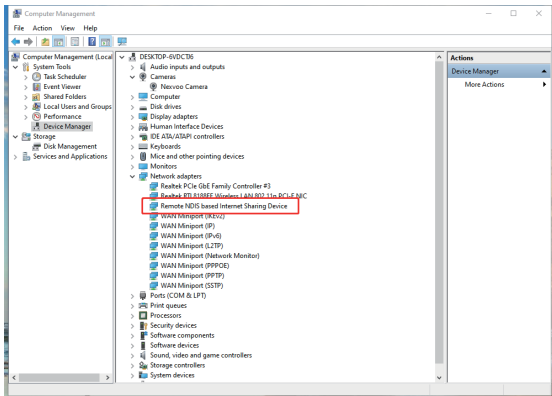
You can configure the following settings on the Web management.

- View device information
- Remote control configuration
- Camera Tracking
- System update & reset
- Change password
- Restore default settings

Note: Web management only supports Windows system.

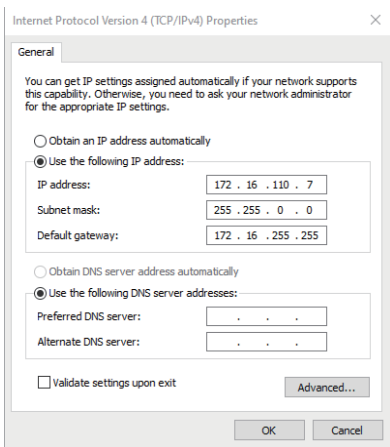
Network configuration

1. After OneView is connected to the power supply, it will automatically turn on, and connect OneView to your computer via USB. The computer will automatically install OneView USB Audio, USB Camera and Remote NDIS drivers, then open the computer device manager to view the installed USB devices. (Set Windows 10 system as example)



2. Select [Computer's **Control Panel - Network and Internet - View Network Status and Tasks – Change Adapter Settings**], you can see the Ethernet with the device name "Remote NDIS based Internet Sharing Device", right-click the Ethernet, select "Properties", and open [**Network-Internet Protocol Version 4(TCP/ IPv4)**], then manually configure the IP address.

- IP address: 172.16.110.7
- subnet mask: 255.255.0.0
- Default gateway: 172.16.255.255



- Click OK to save configuration.

Login Web management

1. Start the browser, enter **http://172.16.110.6** to open the login interface of the OneView Web management platform.
2. Enter the username and password, click "Sign in" to login to the web management platform. (Default username: Admin, Password: 123456)

Note: Some browsers may not be fully compatible. It is recommended to use Chrome/Firefox/Microsoft Edge browser etc.

View device information

You can view the basic information for your OneView USB device through Web Management platform.

Procedure

1. Login to the web management platform through a browser.
2. In the Dashboard section, view the basic information for your OneView USB device.

Remote control configuration

You can clear the paired remote control in Bluetooth Settings menu through the web management platform.

Procedure

1. Login to the web management platform through a browser.
2. Go to General Settings – Bluetooth Settings.
3. Click “Clear Remote Control” button to clear the paired remote control, then you can pair and connect a new remote control.

Camera tracking

You can set the AI technology of the device in the Camera Tracking menu through the web management platform.

Procedure

1. Login to the web management platform through a browser.
2. Go to General Settings – Camera Tracking.
3. Control the OneView USB device through the following functions:

Button Name	Description
AI Technology	The default is on. After the AI technology is turned on, the device will enable Auto Framing and Speaker Tracking functions.
Tracking Speed	Tracking speed setting refers to how long the speaker continues to speak, the screen will automatically track the speaker and focus on the speaker. You can set Fast / Normal / Slow , the default is Fast.
Return to the Panorama Screen regularly during Tracking	The default is on. After this function is turned on, the system will return to the panoramic screen regularly according to the time set in the "Return Time" item. If it is turned off, the screen will not be returned to the panoramic screen regularly during tracking, it will continue to focus on the speaker until it is no longer speaking.
Return Time	Return time refers to when the screen is tracked and focused on the speaker, how long the speaker has not spoken or keeps speaking will automatically return to the panoramic screen. you can set 15s / 30s / 45s / 60s, the default is 30 seconds.

Update the OneView USB Device

You can update the firmware of the OneView USB device through Web Management platform.

Procedure

1. Login to the web management platform through a browser.
2. Go to System Settings – Firmware Update.
3. Firmware update includes MCU update and system update.

• MCU update

Click or drag the firmware file with the format of **.bin** to the firmware import area, then click "Update" button to start the MCU update.

• System update

Click or drag the firmware file with the format of **.img** to the firmware import area, then click "Update" button to start the system update.

Note: Make sure your computer doesn't enter sleep mode during the firmware update.

Otherwise, the update may fail.

Change Your Password

Nexvoo recommends that you change your device's password from the default for security reasons

Procedure

1. Login to the web management platform through a browser.
2. Go to System Settings – Change Password.
3. Enter your Current Password.
4. Enter a new password in New Password and Confirm Password fields.
5. Click Save.

Restore Default Settings

You can erase all configuration and restore the OneView USB video bar default setting through Web Management platform.

The default settings to be cleared include but are not limited to:

- Password
- Remote control presets
- Camera Tracking
- Audio settings
- Bluetooth settings

Procedure

1. Open the login interface of the Web management platform.
2. Click Restore Default Settings.
3. Enter the correct SN number of the device.
4. Click OK to restore default settings.

Regulatory Notices

1. Operating Ambient Temperatures

Operating temperature: +32 to 104°F (0 to 40°C)

Storage temperature: -13 to +160°F (-25 to +70°C)

Relative humidity: 5% to 90%, non-condensing

2. Warranty

Our product warranty is limited only to the unit itself, when used normally in accordance with the operating instructions and the system environment. We are not liable for damage or loss resulting from the use of this product, or for any claim from a third party. We are not liable for problems with Nexvoo device arising from the use of this product; we are not liable for financial damages, lost profits, claims from third parties, etc., arising from the use of this product.

3. Explanation Of The Symbols DC



• Symbol is the DC voltage symbol.



• WEEE Warning symbol

To avoid the potential effects on the environment and human health as a result of the presence of hazardous substances in electrical and electronic equipment, end users of electrical and electronic equipment should understand the meaning of the crossed-out wheeled bin symbol. Do not dispose of WEEE as unsorted municipal waste and have to collect such WEEE separately.

4. Restriction Of Hazardous Substances Directive (ROHS)

This device complies with the requirements of the EU ROHS Directive.

Statements of compliance can be obtained by contacting support@nexvoo.com.

5. Safety Instructions

Save these instructions. Read these safety instructions before use!

General Requirements

- Before you install and use the device, read the safety instructions carefully and observe the situation during operation.
- During the process of storage, transportation, and operation, please always keep the device dry and clean, avoid collision and crash.
- Please attempt not to dismantle the device by yourself. In case of any discrepancy, please contact the appointed maintenance center to repair.
- Please refer to the relevant laws and statutes while using the device. Legal rights of others should be respected as well.

Environmental Requirements

- Place the device at a well-ventilated place. Do not expose the device under direct sunlight.
- Keep the device dry and free of dusts.
- Do not place the device on or near any inflammable or fire-vulnerable object, such as rubber-made materials.
- Keep the device away from any heat source or bare fire, such as a candle or an electric heater.

Operating Requirements

- Do not let a child operate the device without guidance.
- Do not let a child play with the device or any accessory in case of accidental swallowing.
- Please use the accessories provided or authorized by the manufacturer only.
- Please use the provided surge protection power socket only.
- Before plugging or unplugging any cable, make sure that your hands are completely dry.
- Do not spill liquid of any kind on the product or use the equipment near water, for example, near a bathtub, washbowl, kitchen sink, wet, and basement or near a swimming pool.
- During a thunderstorm, stop using the device and disconnect its power supply and USB connection line to avoid lightning strike.
- If the device is left unused for a rather long time, disconnect it from the power supply and unplug the power plug.
- When there is smoke emitted from the device, or some abnormal noise or smell, disconnect the device from the power supply, and unplug the power plug immediately.
- Contact the specified maintenance center for repair.
- Do not insert any object into equipment slots that is not part of the product or auxiliary product.
- Before connecting a cable, connect the grounding cable of the device first.
- Do not disconnect the grounding cable until you disconnect all other cables.

Cleaning Requirements

- Before cleaning the device, disconnect it from the power supply.
- Use a piece of soft, dry and anti-static cloth to clean the device.
- Keep the power plug clean and dry.

6. Troubleshooting

Q: The unit cannot supply power to Nexvoo device.

A1: There is a bad connection with the plug.

- (1) Clean the plug with a dry cloth.
- (2) Connect it to another wall outlet.

A2: The usage environment is out of operating temperature range.

- (1) Use in the operating temperature range.

A3: The cable between the unit and the Nexvoo device is connected incorrectly

- (1) Connect the cable correctly.

A4: You cannot connect the cable properly.

- (1) You may have connected a wrong Nexvoo device.
- (2) Use the correct power supply.

A5: Some dust, etc., may be in the port

- (1) Clean the port

Contact your dealer or authorized service facility for any further questions.

7. FCC Caution

This device complies with part 15 of the FCC Rules. Operation is subject to the following two conditions:

- (1) This device may not cause harmful interference, and
- (2) this device must accept any interference received, including interference that may cause undesired operation.

Any Changes or modifications not expressly approved by the party responsible for compliance could void the user's authority to operate the equipment.

Note: This equipment has been tested and found to comply with the limits for a Class B digital device, pursuant to part 15 of the FCC Rules. These limits are designed to provide reasonable protection against harmful interference in a residential installation. This equipment generates uses and can radiate radio frequency energy and, if not installed and used in accordance with the instructions, may cause harmful interference to radio communications. However, there is no guarantee that interference will not occur in a particular installation. If this equipment does cause harmful interference to radio or television reception, which can be determined by turning the equipment off and on, the user is encouraged to try to correct the interference by one or more of the following measures:

- Reorient or relocate the receiving antenna.
- Increase the separation between the equipment and receiver.
- Connect the equipment into an outlet on a circuit different from that to which the receiver is connected.
- Consult the dealer or an experienced radio/TV technician for help.

8. RF warning for Portable device

The device has been evaluated to meet general RF exposure requirement. The device can be used in portable exposure condition without restriction.

9. Copyright

Except where expressly stated otherwise, no use should be made of the Documentation, Software, Hosted Service, or hardware provided by Nexvoo.

All content the documentation, Hosted Service, and the product provided by Nexvoo including the selection, arrangement and design of the content is owned either by Nexvoo or its licensors and is protected by copyright, and other intellectual property laws including the sui generis rights relating to the protection of databases. You may not modify, copy, reproduce, republish, upload, post, transmit or distribute in any way any content, in whole or in part, including any code and software unless expressly authorized by Nexvoo.

Unauthorized reproduction, transmission, dissemination, storage, and or use without the express written consent of Nexvoo can be a criminal, as well as a civil offense.

Any Changes or modifications not expressly approved by the party responsible for compliance could void the user's authority to operate the equipment.

Product Information

Dimensions

- 3.9 x 19.9 x 2.8 inches (H x W x D)
98 x 505 x 72 mm (H x W x D)

Weight

- 3.7 lbs / 60 oz
1.7 kg

Camera Specs

- f/1.8 Aperture
- 4K Video Output
- 120° FOV
- 5x digital zoom / EPTZ
- 3F HDR > 120dB
- Auto Framing and Speaker tracking
- Automatic White Balance
- Automatic Exposure
- Fixed focus

Video Specs

- UHD 4K@30fps
FHD 1080p@30fps
HD 720p@30fps

Audio Specs

- Support full-duplex conversations, acoustic echo cancellation and background noise suppression
- Stereo microphone:
 - 6-element microphone array
 - 19.7ft / 6m pickup range

- Single speaker:
 - 100Hz-20KHz Frequency response
 - Output = 90 dB @ 0.5m

General Specs

- 16-foot detachable USB cable for PC or Mac-based video conferencing
- Works with most video conferencing applications
- Bluetooth Key
- Kensington Security Slot

System Requirements

- Windows 7, Windows 8 or Windows 10
- Mac® OS X® 10.15 or higher
- Chrome OS™
- Android™ 6.0 or higher

Connector

- USB Type-C (USB2.0)
- USB Type-A (USB3.0)

Power Input

- 5V $\overline{=}$ 2A

*The specifications above are subject to changes without notice.

FC CE RoHS
Nexvoo, Inc.

Asia office:

No.56-58, North 5F, Huoju Plaza, Huoju Road, Huli district
Xiamen city, Fujian province
China

support@nexvoo.com

USA office:

9325 Uptown Drive, Suite 900
IN 46256 Indianapolis
USA

support@nexvoo.com

EMEA office:

Poort van Midden Gelderland Rood 22
6666 LT Heteren
The Netherlands

info@nexvoo.eu