

Adheseal

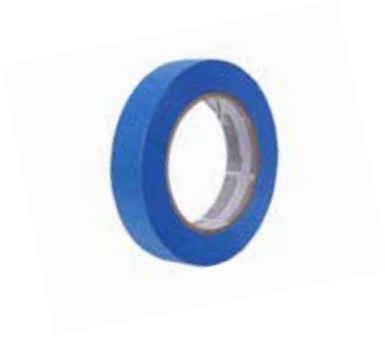
Construction Essentials



General Purpose Masking Tape

General purpose masking tape.

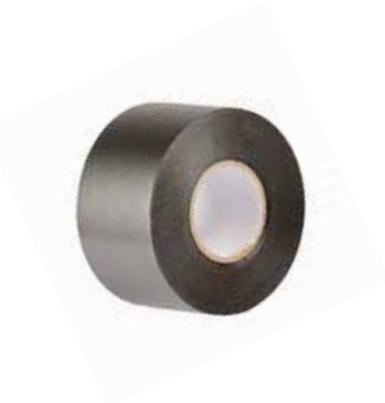
Size	Code
24mm x 50mt	MASKTAPE/24
36mm x 50mt	MASKTAPE/36
48mm x 50mt	MASKTAPE/48



Blue Masking Tape

Commercial and domestic masking. Good resistance to solvents. 14 day UV resistance.

Size	Code
24mm x 50mt	MASKTAPEBL/24
36mm x 50mt	MASKTAPEBL/36
48mm x 50mt	MASKTAPEBL/48



Duct Tape

Single-sided PVC tape designed for pipe lagging, joining plastic sheeting and other general purpose applications.

Size	Code
48mm x 50mt	DUCTTAPE/48



Reinforced PVC Tape

A cloth reinforced PVC tape that has high tensile strength for wrapping bundling. It has excellent adhesion to most surfaces.

Size	Code
48mm x 50mt	TAPE100MPH/48



Bond Breaker All Weather Tape

Used in joint sealing applications to prevent three sided adhesion. Ensuring adhesion between only two surfaces of an expansion joint will maximise movement capabilities of the sealant.

Size	Code
8mm x 50mt	BONDB/8
15mm x 50mt	BONDB/15

Open Cell Backing Rod - Round

Open cell foam backing rod for caulking and sealant applications.



Size	Code
10mm x 210mt	FOAMOC/10
16mm x 150mt	FOAMOC/16
22mm x 100mt	FOAMOC/22
29mm x 60mt	FOAMOC/29
38mm x 30mt	FOAMOC/38
50mm x 20 mt	FOAMOC/50

Open Cell Backing Rod - Square

Open cell foam backing rod for caulking and sealant applications.



Size	Code
25 x 20 x 2000mm	FOAMSQ/2520
45 x 30 x 2000mm	FOAMSQ/4530

Closed Cell Backing Rod - Round

Closed cell foam backing rod for caulking and sealant applications.



Size	Code
6mm x 250mt	FOAMCC/6
10mm x 250mt	FOAMCC/10
13mm x 50mt	FOAMCC/13
15mm x 50mt	FOAMCC/15
20mm x 50mt	FOAMCC/20
25mm x 50mt	FOAMCC/25
30mm x 50mt	FOAMCC/30

Rigi Joint

Rigi Joint is a high density backing material for trafficable joints with a high point load.



Size	Code
20 Lengths x 9mm x 50mm x 2mt (40mt total)	RIGI/50
20 Lengths x 9mm x 100mm x 2mt (40mt total)	RIGI/100

Fire Rated Backing Rod

Fire rated backing rod for caulking and sealing applications. Certified for use with Adheseal PU-25 & Everflex JS.



Size	Code
30mm x 25mm x 2mt	FIREFOAM/30
40mm x 25mm x 2mt	FIREFOAM/40



Biyseal Bitumen Impregnated Foam Lengths

Suitable as a weather resistant seal for many applications.

Features

- Vertical expansion joints in precast concrete / brick or block work
- Jointing between walls and window
- Sealing various roofing and wall decking applications
- Backing channel foam

Size	Code
10 Lengths x 25mm x 25mm x 2mt (20mt total)	BIYSEAL/2525
10 Lengths x 30mm x 30mm x 2mt (20mt total)	BIYSEAL/3030
10 Lengths x 40mm x 40mm x 2mt (20mt total)	BIYSEAL/4040
10 Lengths x 50mm x 25mm x 2mt (20mt total)	BIYSEAL/5025
Trim Deck - 5 lengths x 2mt (10mt total)	BIYSEALTRIMDECK
D Profile - 5 lengths x 2mt (10mt total)	BIYSEALPROFILED

Angles & Trims



Plastic Angles

PVC plastic angles are commonly used as a water stop for wet areas such as bathrooms, laundries and balconies. PVC angle can be easily trimmed to size.

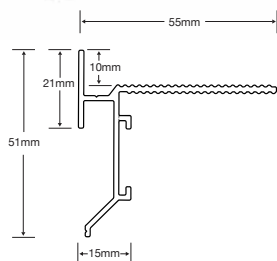
Size	Code
12 x 12 x 1.5 x 3600mm	ANGPL12X1.5/3600
19 x 19 x 2.5 x 3600mm	ANGPL19X2.5/3600
25 x 25 x 1.5 x 3600mm	ANGPL25X1.5/3600
47 x 47 x 4.0 x 3600mm	ANGPL47X47/3600



Aluminium Angles

Mill finish aluminium angle.

Size	Code
25 x 12 x 1.6 x 2165mm	ANGAL25x12X1.6/2165
25 x 12 x 3.0 x 2165mm	ANGAL25X12X3/2165
32 x 20 x 1.6 x 2165mm	ANGAL32X20X1.6/2165
32 x 20 x 3.0 x 2165mm	ANGAL32X20X3/2165
40 x 20 x 1.6 x 2165mm	ANGAL40X20X1.6/2165
40 x 20 x 3.0 x 2165mm	ANGAL40X20X3/2165
50 x 25 x 1.6 x 2165mm	ANGAL50X25X1.6/2165
50 x 25 x 3.0 x 2165mm	ANGAL50X25X3/2165



Adheseal Balcony Drip Angle

Decorative anodised aluminium balcony trim with functional drainage holes and drip edge. The drainage holes allow water in the mortar bed to drain freely to the functional drip edge which directs the water off the facade of the building preventing unsightly and weeping tile joints.

Size	Finish	Code
10mm x 2.5mt	Anodised	BALALAN10/2.5
10mm x 5mt	Anodised	BALALAN10/5

Also available in mill finish on request.



INVEST IN THE BEST



1800 BAT TRIMS (1800 228 874)
www.battrims.com



B.A.T Trim L Shaped Perforated Tile Angle

Used for edge protection on floor or wall tiles and also as a decorative feature in tiling applications.

Available aluminium dimensions (refer diagram A):

- 4.5mm
- 6mm
- 8mm
- 9mm
- 10mm
- 11mm
- 12.5mm
- 13.5mm
- 15mm
- 17mm
- 18.5mm
- 20mm
- 22mm

Finishes

- Mill Finish - Aluminium
- Bright Silver - Aluminium
- Linished Silver - Aluminium (8, 10, 12.5mm only)

- Brass
- Chrome Plated Brass
- Stainless Steel

- Coloured Aluminium (Powder Coated)
 - Alabaster
 - Gloss Black
 - Pearl White

Size	Finish	Code
4mm x 3mt	Mill Finish	TILEANGMF4
4mm x 3mt	Bright Silver	TILEANGBS4
6mm x 3mt	Mill Finish	TILEANGMF6
6mm x 3mt	Bright Silver	TILEANGBS6
8mm x 3mt	Mill Finish	TILEANGMF8
8mm x 3mt	Bright Silver	TILEANGBS8
9mm x 3mt	Mill Finish	TILEANGMF9
9mm x 3mt	Bright Silver	TILEANGBS9
10mm x 3mt	Mill Finish	TILEANGMF10
10mm x 3mt	Bright Silver	TILEANGBS10
11mm x 3mt	Mill Finish	TILEANGMF11
11mm x 3mt	Bright Silver	TILEANGBS11
12mm x 3mt	Mill Finish	TILEANGMF12
12mm x 3mt	Bright Silver	TILEANGBS12



B.A.T Trim Half Round Tile Trim

Designed to protect the outside edge of a tiled surface.

Finishes

- Mill Finish - Aluminium
- Bright Silver - Aluminium
- Linished Silver - Aluminium (8, 10, 12mm only)

- PVC
- Brass
- Chrome Plated Brass
- Stainless Steel

- Coloured Aluminium (Powder Coated)
 - Alabaster
 - Gloss Black
 - Pearl White

Size	Finish	Code
6mm x 3mt	Bright Silver	TILEHALFRBS6
8mm x 3mt	Bright Silver	TILEHALFRBS8
10mm x 3mt	Bright Silver	TILEHALFRBS10
12mm x 3mt	Bright Silver	TILEHALFRBS12

B.A.T Trim Mosaic Corner (Box) Trim

Provides a square edge finish to tile and wall cladding installations.



Available aluminium dimensions (refer diagram A):

- 4.5mm
- 6.5mm
- 8.5mm
- 10.5mm
- 12.5mm
- 15mm

Finishes

- Mill Finish - Aluminium
- Bright Silver - Aluminium
- Linished Silver - Aluminium

- Brass
- Chrome Plated Brass
- Stainless Steel

- Coloured Aluminium (Powder Coated)
 - Alabaster
 - Gloss Black
 - Pearl White

Size	Finish	Code
4mm x 3mt	Bright Silver	TILEBOXBS4
6mm x 3mt	Bright Silver	TILEBOXBS6
8mm x 3mt	Bright Silver	TILEBOXBS8
10mm x 3mt	Bright Silver	TILEBOXBS10
12mm x 3mt	Bright Silver	TILEBOXBS12
15mm x 3mt	Bright Silver	TILEBOXBS15

B.A.T Trim Diminishing Tile Angle

Provides a ramped transition from one flooring surface to another.



Available aluminium dimensions (refer diagram A):

- 8mm
- 10mm
- 12.5mm
- 15mm

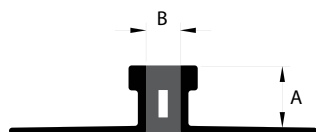
Finishes

- Mill Finish - Aluminium
- Matt Silver - Anodised Aluminium
- Brass

Size	Finish	Code
8mm x 3mt	Matt Silver	TILEDIMMS8
10mm x 3mt	Matt Silver	TILEDIMMS10
12mm x 3mt	Matt Silver	TILEDIMMS12
15mm x 3mt	Matt Silver	TILEDIMMS15

B.A.T Trim Expansion Joint

For expansion joints between tiles.



Available aluminium dimensions (see diagram)

A

- 8mm
- 9mm
- 10mm
- 11mm
- 12.5mm
- 13.5mm
- 15mm
- 17mm
- 18.5mm
- 22mm

B

- 6mm
- 8mm

Neoprene Colours

- Beige
- Black
- Grey

Finishes

- PVC (Black, Grey, White)
- Aluminium
- Brass
- Stainless Steel

Size	Finish	Code
8mm x 3mt	Mill Finish	TILEEXPMF8
9mm x 3mt	Mill Finish	TILEEXPMF9
10mm x 3mt	Mill Finish	TILEEXPMF10
11mm x 3mt	Mill Finish	TILEEXPMF11
12mm x 3mt	Mill Finish	TILEEXPMF12



Hebel Hobs

For use as shower hobs.

Size	Code
50 x 75 x 600mm	HOBHEBEL/75



Polyurethane Hobs

For use as shower hobs.

Size	Code
50 x 75 x 1200mm	HOBPOLY/75

Adheseal

PU-25FC

The Waterproofer's Choice

**Easy Gunning.
Fast Cure.**



Fast Cure Sealant For Fillet Joints Under Waterproofing

Adheseal PU-25FC is a fast curing, single component, moisture curing, polyurethane adhesive / sealant. This tough and durable adhesive / sealant can be used in a wide range of applications such as joint sealing or structural bonding. Suitable for construction, industrial, marine and automotive industries.

- 
Tough & durable
- 
Excellent weathering reistance
- 
Internal & external applications
- 
Paintable
- 
Low Voc
- 
Good UV resistance



Hear what our customers are saying about **Waterstop Streamline**

I am happy to give my recommendation to use Waterstop Streamline. It is the only modern looking product that I have seen that positively connects the shower screen to the waterproofing in a completely leak free way...

Mr Albert Aeberhard
Builder, Hotondo Homes Group ACT

With so many new products on offer in our industry it is difficult to find time to investigate them all. We are very glad we made time for this one.

Mr Dennis Wright
Building and Project Manager, Beazley Homes

My business has expanded rapidly since we started using the Waterstop Streamline hob and now I have tilers voluntarily recommending the Waterstop system - and me - to other builders. Everyone that uses it loves it.

Mr Fred Meddings
Managing Director, Watertight Australia (Waterproofers)

By using Waterstop Streamline I know the shower will be perfect every time. It has to be, because this product is designed to dictate placement of all of the other components to make up the complete shower. It's virtually impossible to stuff it up.

Mr Glen Whitehead
Managing Director, BJM Developments

Waterstop is easy to order with efficient delivery. It has given us the edge on our competitors and is our preferred method of waterproofing and tiling showers.

IF YOU ARE ONE OF OUR
COMPETITORS READING THIS AD
PLEASE IGNORE.

Tony Glover
Tony Glover Tiling & Waterproofing

Using Waterstop Streamline in all our shower areas has made life easy for waterproofing and our tilers.

They are so simple to install and always look very professional.

I recommend to all my clients to use the Waterstop Streamline system in their shower areas.

Mr Kerry Blake
Director, Blake's Waterproofing

Switching to the Waterstop Streamline system has been a fantastic result for the company.

It ticks all the boxes by being modern, sleek, easy to install and failsafe.

Costly repairs associated with leaking shower trays are now a thing of the past.

Luke Pearce
QLD Construction Manager, Devine Homes

Waterstop Streamline - Why would anyone use anything else to build a shower?
At last someone has got a product together that not only works, but it looks good and is so easy for every trade to work with. It even comes with step by step instructions on the protective tape.

Mr Andrew Shailer
Andrew Shailer Tiling

For more information, visit www.waterstopstreamline.com.au
Phone 07 5426 3700 • Fax 07 5426 3711 • Email sales@gleda.com.au



Are your showers ticking time bombs?

Despite builders best efforts, leaking showers are consistently listed in the QBCC's 10 most common defects. Sadly, sometimes this is due to sub-standard workmanship, but most of the time it is the design of the shower itself which is creating the potential for disaster.

Most contractors are at a complete loss as to why, but detailed testing has shown how, by the action of expansion and contraction, water is "pumped" along glue cavities to escape the shower enclosure, no matter how well it is water-proofed.

The best way to prevent the problem is to seal the screen directly to the membrane, and NOT to the tiles.

Waterstop Streamline provides:

- Positive connection between screen and membrane
- Maximises floor area
- Provides a template for following trades
- Ensures correct fall to waste
- Complies with and exceeds AS3740
- Modern, cost effective, one-piece design
- 20 different shapes and sizes
- Minimum change for maximum benefits



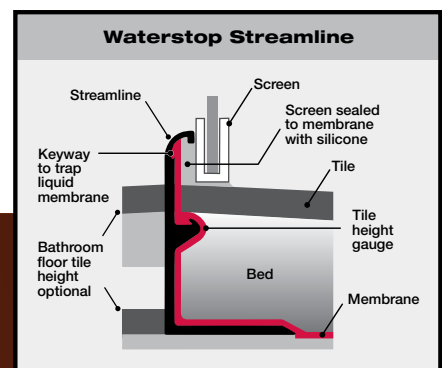
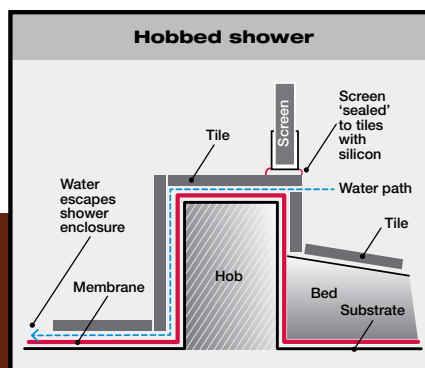
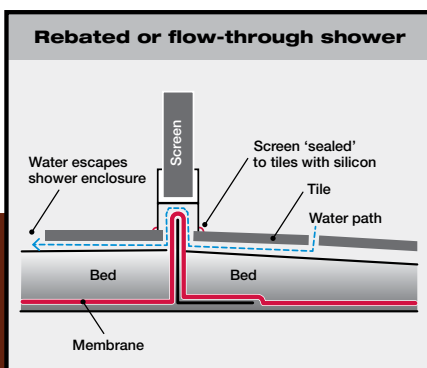
My business has expanded rapidly since we started using the Waterstop Streamline hob and I now have tilers recommending the Waterstop Streamline system - and me - to other builders. Everyone that uses it loves it.

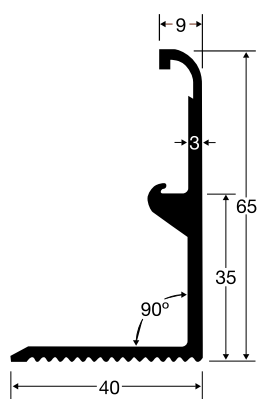
Mr Fred Meddings, Managing Director
Watertight Australia (Water-proofers)

By using Waterstop Streamline I know the shower will be perfect every time. It has to be, because this product is designed to dictate placement of all of the other components to make up a complete shower. It's virtually impossible to stuff it up.

Mr Glen Whitehead, Managing Director
BJM Developments

**Remove the doubt. Fit Waterstop Streamline ...
and forget about leaking showers.**





Waterstop Streamline

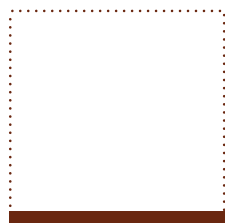
A functional, decorative, one-piece water barrier that seamlessly connects the shower screen to the shower tray area in an almost invisible way. Waterstop Streamline is installed in place of a hob, standard angle or recess into slab to provide long-term superior waterproof construction with the added benefit of modern appearance. The lengths can be easily trimmed on site with a standard hacksaw.

Standard finishes:

Bright Silver, Brushed Aluminium, Pearl White, White Birch, Almond Ivory and Black. Other colours are available upon request.



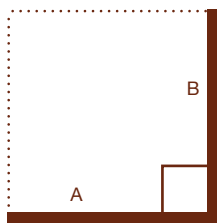
Straight lengths



Available sizes

- 1000mm
- 1500mm
- 2000mm
- 3000mm

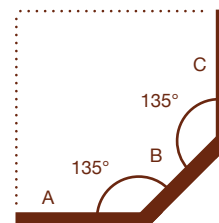
90° corner range



Available sizes

- 900 x 900mm
- 1000 x 1000mm
- 1200 x 1200mm
- 1400 x 1400mm
- 1500 x 1500mm
- 1500 x 1000mm

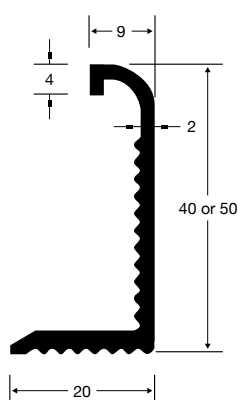
Truncated corner range



Available sizes

- 540 x 650 x 540: 2 x 135° (3 leg)
- 700 x 700 x 700: 2 x 135° (3 leg)
- 900 x 700 x 900: 2 x 135° (3 leg)
- 1000 x 1000: 1 x 135° (2 Leg)
- 1200 x 1200: 1 x 135° (2 Leg)

Size	Finish	Code
1000mm Straight	Bright Silver	WATERSTBS/1000
1500mm Straight	Bright Silver	WATERSTBS/1500
2000mm Straight	Bright Silver	WATERSTBS/2000
3000mm Straight	Bright Silver	WATERSTBS/3000
900 x 900 90° Corner	Bright Silver	WATERSTCNBS/900
1000 x 1000 90° Corner	Bright Silver	WATERSTCNBS/1000
1200 x 1200 90° Corner	Bright Silver	WATERSTCNBS/1200



Waterstop Doorline

A decorative door sill extrusion to improve the appearance of the entry to the wet area. It is designed for applications where the floor is bedded or screeded allowing a consistent, cohesive look to be maintained throughout the bathroom.

Features

- Easily trimmed on site with a hacksaw
- Aesthetically matches Waterstop Streamline showers
- Serrated surface of the internal vertical leg allows waterproofing membranes to securely adhere to the extrusion, providing enhanced waterproofing
- Bright silver anodised finish

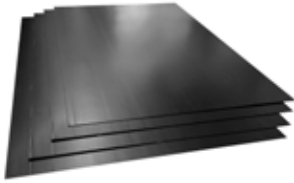
Size	Finish	Code
40mm x 1mt	Bright Silver	WATERSTDR40X1000
40mm x 3mt	Bright Silver	WATERSTDR40X3000
50mm x 1mt	Bright Silver	WATERSTDR50X1000
50mm x 3mt	Bright Silver	WATERSTDR50X3000



Kiln Dried Sand

Size	Weight	Code
0.25mm	20kg Bag	SAND/2.5
0.60mm	20kg Bag	SAND/0.6
1.00mm	20kg Bag	SAND/1

Waterproofing Reinforcement & Protection Products



Corflute Protection Board

For membrane protection.

Size	Code
1805 x 1210 x 2mm (2.1m ²)	CORFLUTE/2.1



Geo Fabric

Geo textile fabric used for membrane protection whilst still allowing adequate drainage.

Size	Code
2mt wide x length cut to size (50mt roll)	GEOFAB/1000



Polyester Reinforcing Fabric - Easy Fold

Polyester mat for reinforcing corners and joints in waterproofing applications. This easy fold mat makes it easy to form corners and is a good general purpose reinforcing fabric.

Size	Code
100mm x 30mt	REOFABFD/100/30
100mm x 100mt	REOFABFD/100
150mm x 100mt	REOFABFD/150
1000mm x 100mt	REOFABFD/1000



Polyester Reinforcing Fabric - Easy Form

Softer polyester mat for reinforcing corners and joints in waterproofing applications when the substrate is rough or uneven.

Size	Code
83mm x 100mt	REOFABFM/83
100mm x 100mt	REOFABFM/100
150mm x 100mt	REOFABFM150
1000mm x 100mt	REOFABFM/1000



Fibreglass Reinforcing Mat 225gsm

Fibreglass mat for reinforcing corners and joints in waterproofing applications.

Size	Code
100mm x 125mt	FIBREGL225/100
150mm x 125mt	FIBREGL225/150



Leak-Seal Tape - Duram

Leak-Seal Tape is a self-adhesive, waterproofing membrane / reinforcing fabric. Used in conjunction with Duram waterproofing membranes, it provides a good method for waterproofing and sealing joints on corners and cracks.

Size	Code
80mm x 15mt	LEAKSEALDUR/80



Mapeband - Mapei

A rubber tape with alkali-resistant fabric for cementitious waterproofing systems.

Applications

- Waterproofing corners between adjacent walls and between walls and floors before applying Mapelastic or Mapelastic Smart
- Flexible waterproofing of expansion joints on terraces, balconies and more before applying Mapelastic or Mapelastic Smart
- Sealing pipes and drains in bathrooms, showers and kitchens in conjunction with Mapeband Gaskets
- Sealing expansion joints in precast panels



Size	Code
120mm x 50mt roll	MAPEBAROLL/50
120mm x 10mt roll	MAPEBAROLL/10
90° angular	MAPEBAANG/90
270° angular	MAPEBAANG/270
120 x 120mm outlet gasket	MAPEBAGAS/120
400 x 400mm outlet gasket	MAPEBAGAS/400
515 x 315mm cross piece	MAPEBACROSS
515 x 315mm T piece	MAPEBATEE



Mapeband TPE - Mapei

For flexible sealing and waterproofing expansion joints and over cracks subject to movement.

Applications

- Flexible waterproofing seal of expansion joints subject to large amounts of movement
- Flexible waterproof seal in tunnels and road-works
- Sealing expansion joints in prefabricated panels
- Sealing structural joints in facades
- Sealing joints in hydraulic works such as channels, basins, drains pipe-works and more

Size	Code
Mapeband TPE 170	17cm x 30mt MAPEBATPE/170
Mapeband TPE 325	32.5cm x 30mt MAPEBATPE/325



BOUNTYBRASSWARE

Designer Bathroom Fittings

Bounty Brassware is the trusted name in designer bathroom fittings, combining clever designs with superior quality to enhance your bathroom's look, feel and function.

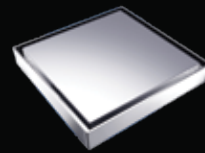
DESIGNER BATHROOM FITTINGS



BERMUDA RANGE
FLOOR GRATE



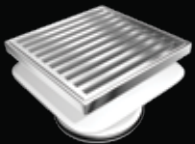
BERMUDA MEGA RANGE
FLOOR GRATE



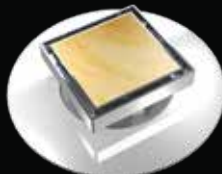
DELUXE MEGA FLIPPER



BERMUDA CHANNEL
FLOOR GRATE



SQUARE ON SQUARE
FLOOR GRATE



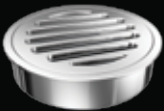
LEAK CONTROL BERMUDA
FLOOR GRATE



NEW ROUND BERMUDA
FLOOR GRATE



CLASSIC RANGE
FLOOR GRATE



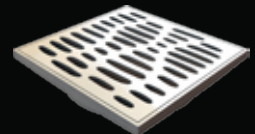
SS316 RANGE
FLOOR GRATE



POP DOWN WASTE



BOTTLE TRAP



FLOW ORGANICS
FLOOR WASTE CP

Visit www.bountybrassware.com.au to see a great range of designer floor wastes by Bounty Brassware

Email: sales@bountybrassware.com.au
Phone: 02 9896 7760 | Fax: 02 9636 2498

Proudly distributed by
Collis Marketing Service
sales@collismarketing.com.au
Phone: 07 3805 6664
Fax: 07 3805 6668

ORGANICS FLOOR WASTES

Elegant, beautiful and functional... the Organics selection of floor wastes by Bounty Brassware. A choice of designs to suit any bathroom style. Enjoy the classic look of the 2 Woven options, or style your bathroom with the contemporary look of the Flow or Dreamtime designs.

Solid cast and forged brass construction that allows you to update your floor waste without updating your floor.



BERMUDA

The flagship of the Bounty Brassware range, the Bermuda floor grate system is a simplistically discreet solution for any bathroom or wet area. Bermuda cleverly incorporates the selected floor tiles (or a feature tile) to blend beautifully with any environment. Water simply disappears from your bathroom / shower floor.



BOTTLE TRAP

The Bounty Brassware Bottle Trap is designed to elegantly complement any bathroom. Simplistic in design while remaining highly functional and easy to install.

POP DOWN WASTE

LOOKS BETTER. *IS BETTER!*

- At Last – a quick close waste that is approved for basins and baths giving you a consistent look throughout your bathroom.
- Looks Fantastic - Sits flush in the most commonly used 'open position' for a superior aesthetic.
- Works Brilliantly – super smooth opening and closing, along with easy to remove cartridge for cleaning and drain access.





Floor Grate - Chrome Plated Brass - Round / Square

Chrome plated brass grate. Push into PVC.

Size	Shape	Code
50mm	Round	GRATERCB50
80mm	Round	GRATERCB80
100mm	Round	GRATERCB100
50mm	Square	GRATESCB50
80mm	Square	GRATESCB80
100mm	Square	GRATESCB100



Puddle Flanges - PVC

PVC puddle flange only.

Size	Code
50mm	WASTEFL50
80mm	WASTEFL80
100mm	WASTEFL100



Megaflex Standard Floor Waste

(With chrome plated brass grate)

Adjustable chrome plated brass floor grate and PVC leak control flange that fits into PVC pipe using a sealing 'O' ring. Note: This is not a direct stick waste.

Features

- Adjustable chrome plated brass floor grate and PVC flange.
- Available with Round or Square Grates
- Designed as a Leak Control Flange that fits into PVC pipe using a sealing 'O' ring
- Tear out under-cap to keep debris out - remove after tiling

Size	Shape	Code
100mm x 100mm	Round	WASTERRCB100
100mm x 100mm	Square	WASTERSCB100



Megaflex Floor Waste - Stick Down

(With chrome plated brass grate)

Adjustable chrome plated brass floor grate and PVC leak control flange that fits into PVC pipe using a sealing 'O' ring.

Features

- Suitable for direct stick applications
- Grate sits flush for direct stick applications
- Available with Round or Square Grates

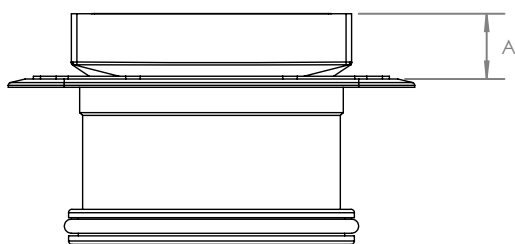
Size	Shape	Code
80mm x 50mm	Round	WASTEDSRCB50
80mm x 80mm	Round	WASTEDSRCB80
100mm x 100mm	Round	WASTEDSRCB100
80mm x 50mm	Square	WASTEDSSCB50
80mm x 80mm	Square	WASTEDSSCB80
100mm x 100mm	Square	WASTEDSSCB100

Bermuda Mega Square Floor Waste (With leak control flange)

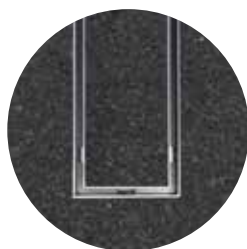


A stylish, chrome plated floor waste incorporating a square insert suitable for a cut tile. The Bermuda Mega floor grate also comes with a leak control flange.

Size	A (refer diagram)	Type	Code
50mm	27mm	Standard	WASTEBS50
80mm	27mm	Standard	WASTEBS80
100mm	27mm	Standard	WASTEBS100
50mm	23mm	Low Line	WASTEBSL50
80mm	23mm	Low Line	WASTEBSL80
100mm	23mm	Low Line	WASTEBSL100



Bermuda Channel Floor Grate (With leak control flange)

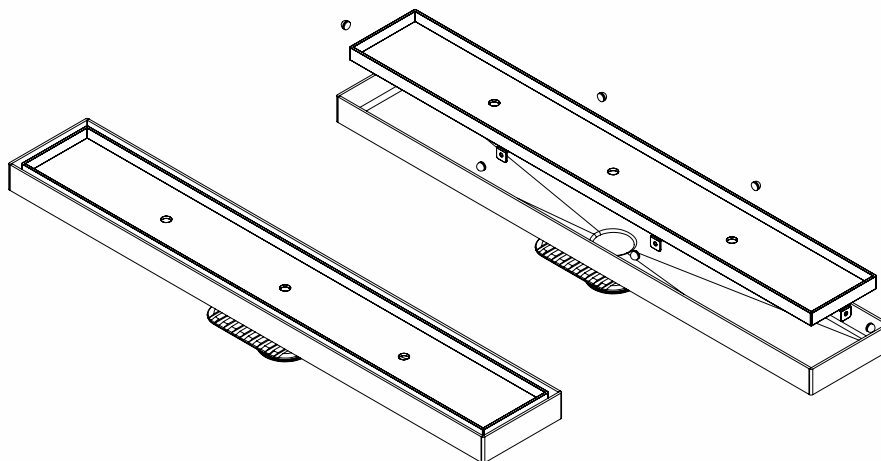


A stylish, chrome plated floor waste incorporating an insert suitable for a cut tile. The Bermuda Channel floor grate also comes with a leak control flange.

Features

- 316 Stainless Steel
- Adjustable height and tilt
- Customised dimensions available

Size	Code
300mm	WASTEBCH300
600mm	WASTEBCH600
900mm	WASTEBCH900
1000mm	WASTEBCH1000
1200mm	WASTEBCH1200





Celleni Linear Channel Grate Kit

A stylish triple anodized aluminium channel grate with a brushed silver finish suitable for indoor and outdoor applications.

Features and benefits

- Easily cut to any length
- 40mm and 50mm wastes available
- Waste can be positioned anywhere along the tray on site
- No welding required, only silicone is needed
- An affordable alternative to stainless steel
- Comes with a lifetime rust proof warranty
- Manufactured from triple anodized aluminium
- Lightweight and easy to clean

Linear Channel Grate Kits

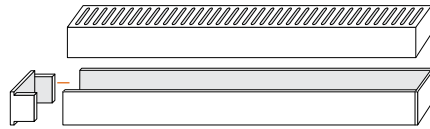
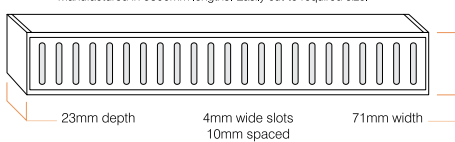
	Code
1100mm Grate Kit - includes 2 x end caps / 1 x pop wastes	WASTECELCHSTD/1100
5600mm Grate Kit - includes 10 x end caps / 5 x pop wastes	WASTECELCHSTD/5600

Channel Grate Kits can be cut to size in increments of 100mm.

Accessories

	Code
40mm Pop Waste Outlet	WASTECELCHOUT/40
50mm Pop Waste Outlet	WASTECELCHOUT/50
End caps (x2)	WASTECELCHSTDEND

Manufactured in 5800mm lengths. Easily cut to required size.



Celleni Tile Insert Channel Wastes

Creates a seamless look in bathrooms or wet areas. Designed to accommodate stone, granite, marble or thick porcelain tiles, easily fitting up to 18mm.

Features and benefits

- Easily cut to any length
- 50mm and 80mm wastes available
- Waste can be positioned anywhere along the tray on site
- No welding required, only silicone is needed
- An affordable alternative to stainless steel
- Comes with a lifetime rust proof warranty
- Manufactured from triple anodized aluminium
- Lightweight and easy to clean
- Can be used in indoor and outdoor application

Plus Tile Insert Channel Waste Kits

	Code
1100mm Grate Kit - includes 2 x end caps / 1 x pop wastes	WASTECELCHTILPL/1100
5600mm Grate Kit - includes 10 x end caps / 5 x pop wastes	WASTECELCHTILPL/5600
End caps (pair) 100 x 35mm (Plus)	WASTECELCHTILPEND100

Slimline Tile Insert Channel Waste Kits

	Code
1100mm Grate Kit - includes 2 x end caps / 1 x pop wastes	WASTECELCHTILSL/1100
5600mm Grate Kit - includes 10 x end caps / 5 x pop wastes	WASTECELCHTILSL/5600
End caps (pair) 100 x 26mm (Slimline)	WASTECELCHTILSEND100

Waste Outlets

	Code
40mm Pop Waste Outlet	WASTECELCHOUT/40
50mm Pop Waste Outlet	WASTECELCHOUT50
72mm Pop Waste Outlet	WASTECELCHOUT72
80mm Pop Waste Outlet	WASTECELCHOUT80

