



prints: margins & framing ~ a helpful guide
from Katie m. Berggren ~ www.KmBerggren.com

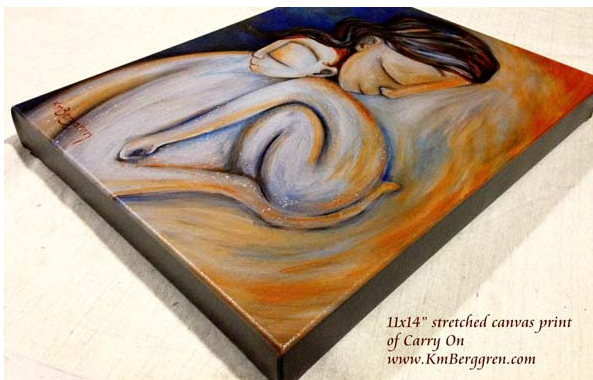
Q: Why do KmBerggren paper prints have white margins/borders?

A: All my art prints are created from original paintings. Original paintings are painted in a variety of sizes from 4x4 to 60x60 inches, a variety of rectangular formats such as 4x12 to 30x60 inches, and many, many square sizes.

There are **MANY** different sizes and shapes of original paintings but only **2** formats of prints: square (5x5, 8x8, 12x12) or rectangle (5x7, 8x10, 9x12 and 13x19). This is why prints have white margins: So that YOU can simply choose ANY painting as a fine art print on paper, and it will be available in the format or shape of print that fits the image best.

Original paintings are photographed after completion and the high-quality photographs are used to create archival paper prints and stretched canvas prints in a variety of sizes.

Please Note: stretched canvas prints do not have white margins/borders but are printed full



color with a printed dark color wrapped around the sides. Stretched canvas prints arrive wired and ready to hang, no framing or matting required, and no staples on the edges.

Back to Paper Prints: I offer my prints on paper with **THICK Margins** or **THIN Margins** (which is the default). This way you can choose if you'd like to have space between the image and the frame.

THIN Margin prints (which are the default in my shop, not labeled as "Thick Margin"), have a very thin margin around the image for handling. This thin margin will be covered up when you place the print into a frame if the frame has moulding (wood or metal edges).



*Defined~ archival print on heavy paper
Left: 8x10 inch with Thick Margin ~ Right: 8x10 inch with Thin Margin
Shop.KmBerggren.com*

So, the image will run right up to the frame. **Above is a rectangular print, Defined, as both a Thick and Thin Margin paper print.** You get a larger image with a Thin Margin print. Almost all of my prints have a Thin Margin unless you choose Thick Margins.

Now let's talk about THICK Margin prints.

The Thick Margin or white border gives space between the image and frame when the print is framed for hanging.

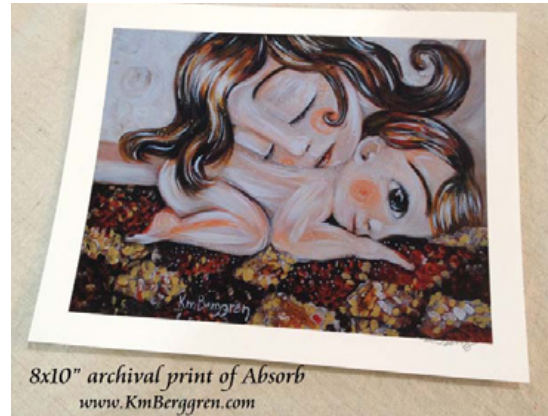
In my Thick Margin prints, the white border acts as a faux (fake) visual mat for the paper prints (thus, you do not need to purchase matboard cut to the exact size of the image in order to space the image from the wood or metal moulding of the frame). The faux mat makes framing easier and less costly. See below, the white margin is setting the image away from the dark wood of the frame.



Keeping the print sizes (outer paper edge sizes) in standard frameable sizes of 5x5, 5x7, 8x8, 8x10, 9x12 and 12x12 inches, and setting off the painting image with a Thick Margin, allows the prints to be framed with off-the-shelf, standard-sized frames, versus the need to pay for a custom-framing service at a frame shop.

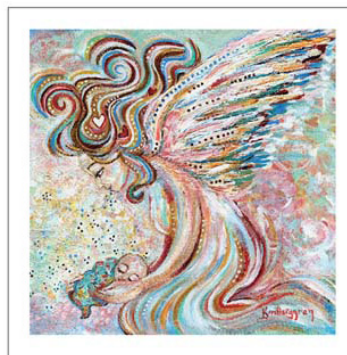
Here is a rectangular painting as a rectangular print (8x10 inch) with Thick Margins.

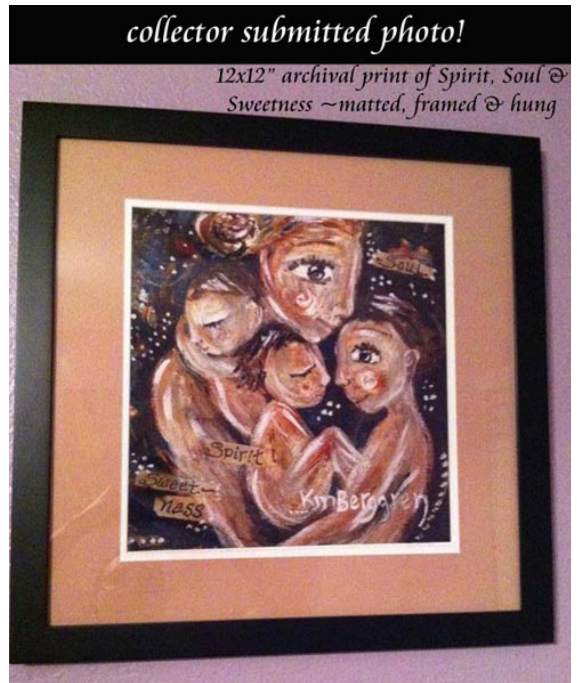
Notice the nice even margins all around the image? This will pop right into an 8x10 inch frame from the store shelf. Easy!



If you choose a square print (the original painting was created on a square canvas and the actual image is square) with a Thick Margin, there will be equal thicker margins all the way around the image: top, sides and bottom. If you choose the Thin Margin print, you will get only very small margins for handling, but also a larger image size. See below.

You can also place a Thin Margin print into an off-the-shelf frame. Keep reading.





above: A Thin Margin print in an off-the-shelf 12x12 inch frame. Note that the Thin Margins are hidden by the wood moulding of the frame.

to look around, but you can find 5x5, 5x7, 8x8, 8x10, 9x12 and 12x12 inch frames! We will talk about 13x19 inch prints in a bit.

Q: How shall I frame my lovely new archival paper print?

A: Almost all my paper prints fit into standard off-the-shelf frames! You might have

If you choose to have a mat on your framed print, purchase a matted frame with the inner window dimension to match your print size. When framed you will have the white margin of the print, the mat, and then the frame. See above.



See image at left: I plan margins carefully to give you the best presentation of your art. You may choose to amplify the visual experience by matting and framing smaller prints up to a glorious and larger size!

Choose larger frames that have a window mat cut to the size of your print. Get creative, have FUN!



above: 12x12 inch Thick Margin print framed in a 12x12 inch frame, no additional window mat.



above: 8x10 inch Thick Margin prints framed in 8x10 inch frames, no additional window mats.



Q: Do the 13x19 inch archival paper prints have white margins?

A. KmBerggren 13x19 inch prints are **NOT** created to fit into a standard-sized frame. 13x19 inch frames are not as easy to acquire and can be flimsy, not durable, or protective of your print investment.

My 13x19 inch archival prints are created with ONE thing in mind: to give YOU the largest image possible for your money.

When you order a 13x19 inch print, I create the largest print I can on 13x19 paper, with just a small white edge for handling and framing ease.

I offer my 13x19 inch prints of rectangular print images only. That way you get a nice large print with relatively even margins. The margins will be even on both sides OR on the top and bottom. The other two sides will match, but will vary in size, depending upon the size of the original painting the print was made from.

Since the 13x19 archival paper prints are not set up to work in a standard 13x19 inch frame, you can either choose to have them custom framed by a professional framing shop, or, I have a method of framing them in a lovely way without going the full custom-framing route. Keep reading.



Q: How shall I frame my lovely new 13x19 archival paper print?

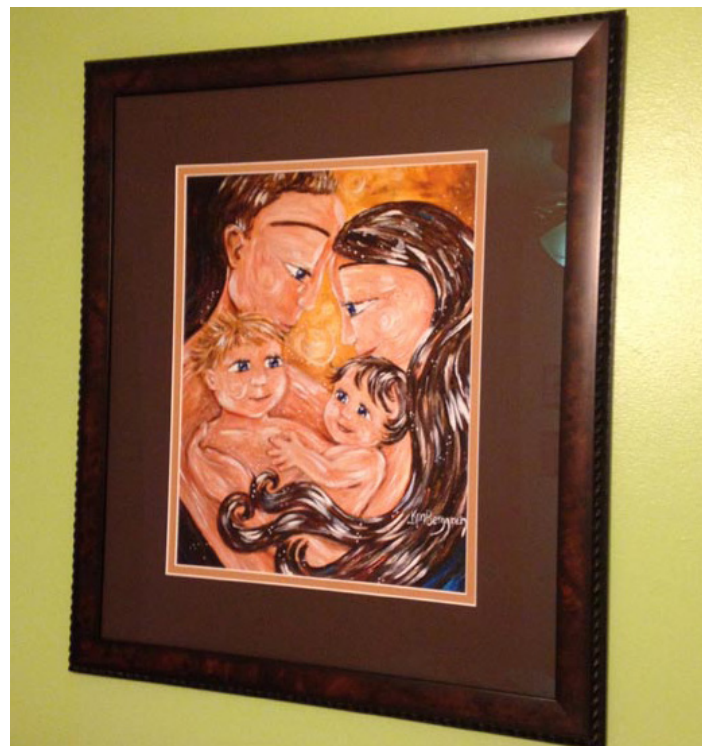
A. You should never feel guilty about going the extra mile to have your art investment professionally framed and protected in a sealed frame, preferably with UV protectant glass. However, I completely understand that custom-framing is not always in the budget.

For DIY 13x19 inch print framing, you can choose an off-the-shelf standard-sized frame in an 18x24" or larger size. Next, take the frame AND the print to the framing counter and ask to have a "window mat" cut. They will measure the dimensions of the actual image

in your print (not the outside of the paper) and cut you a mat with an outer dimension to fit into the frame you chose, and an inner "window" to surround your print image. Please request a backing board for the mat, as well. This way, you will purchase a custom-cut window mat, versus handing the print across the counter and paying for the whole custom-framed shebang! It may take them a day or two to cut your window mat for you.

When you have received your window mat, you can put it all together very carefully at home. Clean the glass on both sides and hang your print from the top of the window mat with archival tape adhered from the back of the print to the top of the window.

images: 13x19 inch prints, custom matted and framed.



NOTE: Please do not tape your print to the back of the window mat on all sides, only the top edge. This gives the print a chance to flex and change with time and humidity, without wrinkling. Lay your window upside down on a clean surface, lay your print in the window, line it up correctly, and adhere the top edge with acid-free tape. Put mat and image into frame with backing board and securely close the fasteners on the back. You now have a nicely framed piece without the custom-framing price. **You can also use this method for smaller prints!**

Please note: This is economical and do-able but can be a bit of a pain to keep dust and

fibers off the glass while sealing up the back of the frame. Be patient and best of luck :)

Custom framing is a wise and beautiful choice for any of your KmBerggren prints, as professional framers will use the correct UV protectant glass, archival tape and acid-free backing paper for your art. They will wire your piece for hanging which will provide for a more reliable display than the saw-tooth hardware that is often included on store bought frames.



Congratulations!

You have made an investment in beautiful, high quality archival motherhood artwork that has touched your heart and can (if properly taken care of) be handed down from generation to generation.

*enjoy!
♥ KmBerggren*

Please let me know if you have any additional questions about framing your archival paper prints ~ it is my intention that you will LOVE your prints!

Some of my favorite collector submitted photos of framed prints

lower left: 9x12 inch Thick Margin prints in standard frames without mats.

upper left: 8x10 & 12x12 inch Thin Margin prints, framed.

upper right: 5x5 inch print in a custom carved frame.

middle right: 8x10 inch prints with Thick Margins, framed without mats.

bottom right: 12x12 inch print, custom framed with mat.



Katie m. Berggren
.... could this moment be yours?
www.KmBerggren.com • Katie@KmBerggren.com