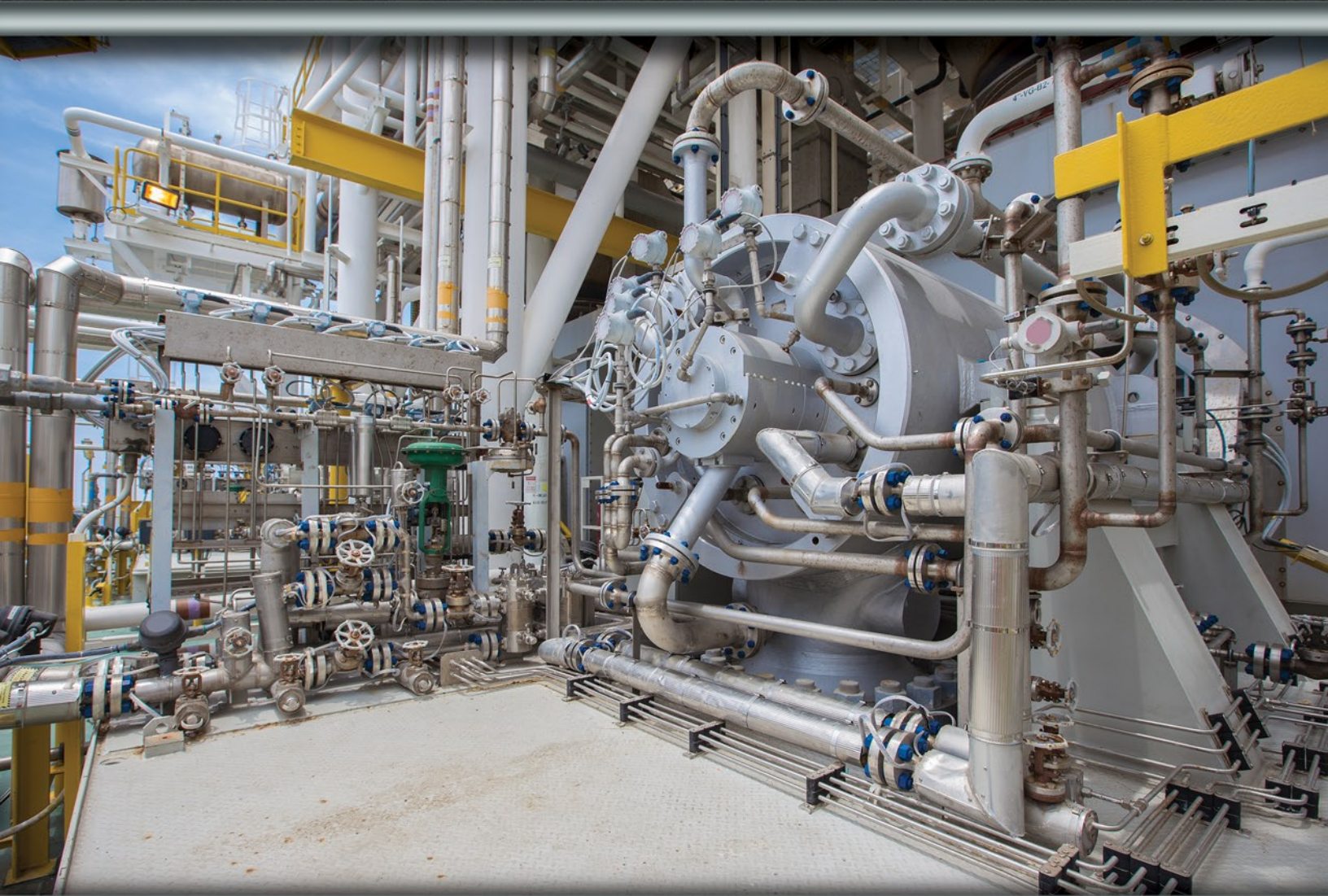


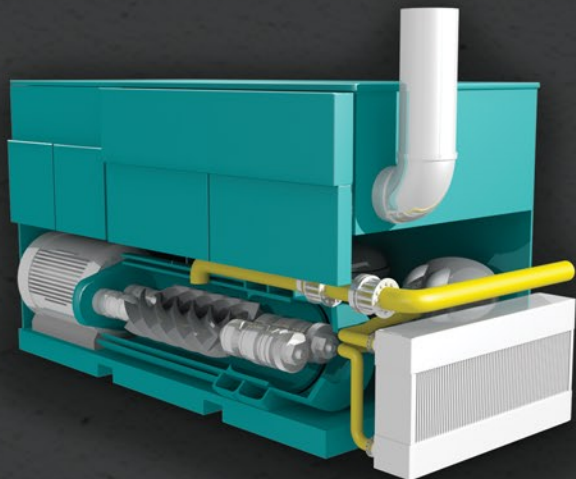
Synthetic Air Compressor Fluids



The Compressor Life (CL) high performance synthetic fluids provide cost savings by mitigating parasitic loss, resulting in longer equipment life and returned efficiency in used equipment. The CL line of fluids protects against corrosion and rust, has excellent oxidation stability, and quickly separates from water. Compressor Life is formulated with uncompromising advanced additive technology combined with the very best synthetic base stocks in the industry.

WHEN RESULTS MATTER[®]

Rotary Screw Compressor



Compressor Life (CL) high performance synthetic compressor fluids are engineered to cover a multitude of rotary screw applications from normal to severe service. The CL family offers a wide range of products including hydrocarbon, PAG and fluids for NSF H1 food grade applications. These fluids are specially formulated using advanced additive chemistry and the finest synthetic base oils to provide maximum efficiency and value for all rotary screw compressors.

Applicable Fluids:

- **CL 4000** - Synthetic Blend
ISO Grades: 32, 46, and 68
- **CL 8000** - Synthetic
ISO Grades: 32, 46, and 68
- **CL 12000** - Premium Synthetic
ISO Grades: 32, 46, and 68
- **CL 16000** - Premium Synthetic PAG/Ester
ISO Grades: 22, 32, and 46

Applicable Food Grade Fluids:

- **CL FG 4000** - FG Synthetic
ISO Grades: 32, 46, and 68
- **CL FG 8000** - Premium FG Synthetic
ISO Grades: 32, 46, and 68
- **CL FG 12000** - Premium FG Synthetic PAG/Ester
ISO Grades: 32, 46, and 68

Reciprocating Compressor

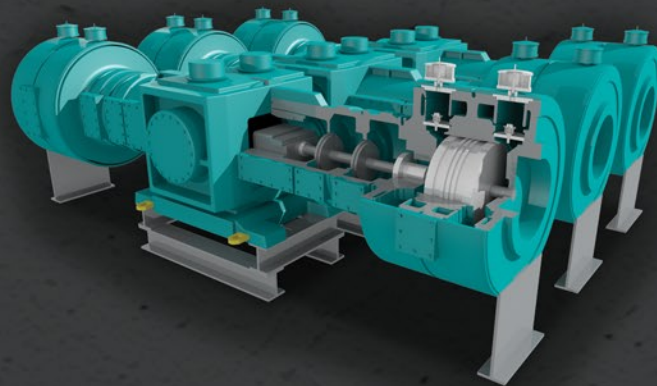
Compressor Life (CL) high performance synthetic fluids are formulated to meet the challenges of high temperature/high stress operating conditions of reciprocating compressors. Using advanced additive chemistry, these fluids have outstanding oxidation stability and deposit control. This category of fluids offers both non-food grade and NSF H1 food grade options to cover the needs of all reciprocating air compressors.

Applicable Fluids:

- **CL Recip** - Premium Synthetic
ISO Grades: 68, 100, and 150

Applicable Food Grade Fluids:

- **CL FG Recip** - Premium FG Synthetic
ISO Grades: 68, 100, and 150



Equipment Flush

Equipment Flush is a synthetic fluid that solubilizes varnish deposits and other contaminants. Equipment Flush is a useful tool when changing from a hydrocarbon lubricant to a PAG-based lubricant or visa-versa. Also available in a food grade version.

Equipment Flush is available in ISO grades 46 - 460.

Vane Compressor

Compressor Life (CL) vane compressor fluids are formulated to excel in normal and severe-duty applications, where mineral oils are simply not as effective. Using only the best premium synthetic base oils, this line of compressor fluid greatly increases reliability and efficiency in the most demanding operating conditions. These oils are specially engineered for the reduction of deposits and downstream carryover in most vane compressors.

Applicable Fluids:

- **CL 4000** - Synthetic Blend
ISO Grades: 32, 46, 68 and 100
- **CL 8000** - Synthetic
ISO Grades: 32, 46, 68 and 100
- **CL 12000** - Premium Synthetic
ISO Grades: 32, 46, 68 and 100

Blowers

Compressor Life (CL) blower fluids are designed with energy efficiency and reliability in mind. Blowers commonly have small reservoirs relative to the load of the equipment, resulting in elevated operating temperatures. The combination of premium synthetic base oils and advanced additive chemistry provide longer life and service under these conditions. CL blower fluids can handle the heavy loads blowers require. This category offers both non-food grade and NSF H1 food grade options to cover the needs of all blowers.

Applicable Fluids:

- **CL Blower Fluid** - Premium Synthetic
ISO Grades: 68, 220 and 320

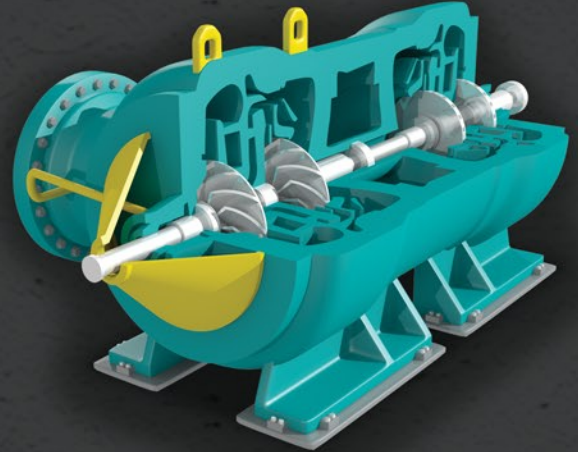
Also available in a food grade version.

Additional information, product data sheets, and safety data sheets can be found at:

www.hplubricants.com

Centrifugal Compressor

Compressor Life (CL) centrifugal fluids are formulated from the highest quality synthetic base stocks to allow for exceptional equipment protection and reliability from normal to severe operating conditions. Using CL centrifugal fluids will result in a much cleaner compressor and reduced deposits when running beyond normal drain intervals. Performance and efficiency are greatly enhanced with the incorporation of HPL's advanced additive technology. CL centrifugal fluids are blended for non food grade and NSF H1 food grade applications for most centrifugal compressors.



Applicable Fluids:

- **CL 4000** - Synthetic Blend
ISO Grades: 32, 46, and 68
- **CL 8000** - Synthetic
ISO Grades: 32, 46, and 68
- **CL 12000** - Premium Synthetic
ISO Grades: 32, 46, and 68
- **CL 16000** - Premium Synthetic PAG/Ester
ISO Grades: 22, 32, and 46

Vapor Phase Fluid

Vapor Phase Fluid (VPF) is a formulated oil designed to protect new or rebuilt equipment in storage while waiting for use. VPF is fortified with traditional corrosion inhibitors and vapor phase corrosion inhibitors. VPF 46 can be used in pumps, compressors and turbines. VPF 150 is designed for gearboxes and contains a tackifier to promote adhesion during routine shaft rotation while the equipment is in storage.

CL 4000 is a synthetic blend fluid designed for use in rotary screw, centrifugal and vane compressors with a drain interval up to 4,000 hours.

CL 8000 is a synthetic fluid for use in rotary screw, centrifugal and vane compressors with drain intervals up to 8,000 hours.

CL 12000 is a premium synthetic fluid for use in rotary screw, centrifugal and vane compressors with drain intervals up to 12,000 hours.

CL 16000 is a premium synthetic PAG/Ester fluid used in rotary screw, centrifugal and vane compressors that require a (PAG/ester) fluid.

CL Recip is a premium synthetic fluid for use in reciprocating compressors.

CL FG 4000 is a food grade synthetic fluid used in rotary screw compressors that require H1 fluids and drain intervals up to 4,000 hours.

CL FG 8000 is a premium food grade synthetic fluid used in rotary screw compressors that require H1 fluids and drain intervals up to 8,000 hours.

CL FG 12000 is a premium food grade synthetic PAG/Ester fluid used in rotary screw compressors that require an H1 fluid.

CL FG Recip is a premium food grade synthetic fluid used in reciprocating compressors that require an H1 fluid. This fluid dramatically reduces/eliminates varnish and sludge buildup caused by elevated discharge temps.

CL Blower Fluid is a premium synthetic fluid used in rotary lobe and vane blowers. Also available in a food grade version.

Formulated with Integrity™

High Performance Lubricants is not your typical oil company. We pride ourselves on producing the highest quality products to protect your fleet's vehicles and/or plant's rotating equipment. Value can be defined as having worth, advantages, benefits, gains, merit and significance. All HPL lubricants are formulated to provide these values to our clients.

High Performance Lubricants has invested heavily in a state-of-the-art facility, which allows for product development and top-notch quality assurance from conception to completion. Our stringent quality control of each raw material and each batch our plant produces ensures accurate, consistent and high performing lubricants.



500 S. Spruce Street
Manteno, IL 60950

815.468.3535