

UROBOROS GLASS

Art
Glass



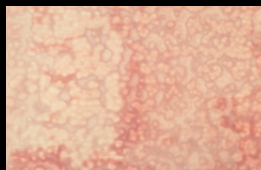
WELCOME, WILKOMMEN, IRASSHAIMASE, BIENVENIDOS!

Since 1973, Uroboros Glass has created a broad range of beautiful and indispensable sheet glass styles for discerning glass artists worldwide.

We're proud that our efforts have provided unmatched glass color and texture for the world's best stained glass panels and lamps for over 35 years. And we continue to strive for improvement – in visual properties, representational effects, consistency and usability.

Please browse this catalog for an overview of our many sheet products and styles. For more in-depth information and sources of supply, please visit us online at www.uroboros.com.

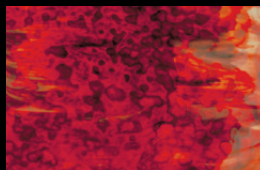
Ring Mottle



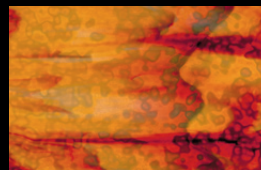
00-031
Pastel Pink Opal and White



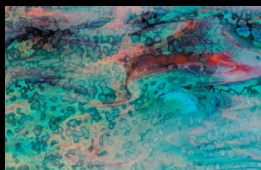
00-05
White



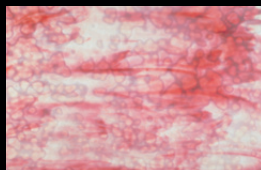
00-20
Ruby and Red on White



00-21
Ruby, Golden Yellow Opal and Ruby on White



00-288
Dolphin Gray Opal, Peacock Blue, Gold-Pink and Gold-Purple



00-29
Gold-Pink and White



00-33
Honey Amber



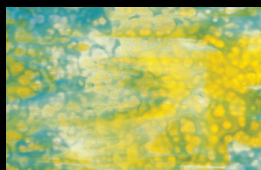
00-36
Lemon Yellow and Golden Yellow Opals on White



00-361
Goldenrod Opal on White



00-40
Steel Blue Opal and Sky Blue on White



00-41
Cerulean Blue Opal and Yellow Opal on White



00-43
Light Blue and Violet Blue Opal



00-485
Cobalt Blue, Emerald Green, Spring Green and Purple



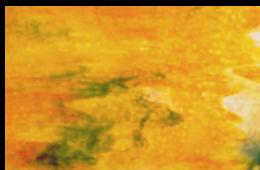
00-49
Gold-Purple and White



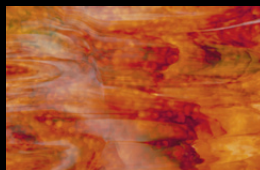
00-50
Blue Opal with Gold-Pink, Spring Green and Emerald Green on White



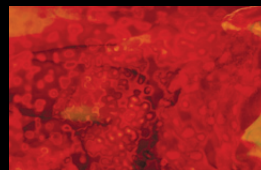
00-545
Cobalt Blue, Plum, Emerald Green and Deep Purple with Clear and Blue Highlights



00-60
Yellow and Orange Opals on White with Spring Green and Dark Green Highlights



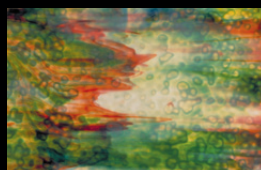
00-61
Orange Opal and Ruby on White with Spring Green and Dark Green Highlights



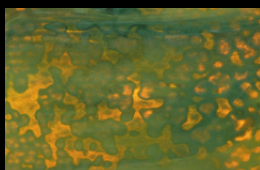
00-621
Light Red and Orange Opals with Yellow and Occasional Dark Green Highlights



00-69
Gold-Pink and White with Dark Green Highlights



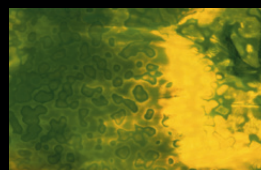
00-70
Emerald Green, Spring Green and Light Green w/ Red, Blue, Amber Highlights



00-731
Avocado Green and Forest Green Opals with Deep Amber Highlights



00-74
Emerald Green, Spring Green and Light Green



00-752
Verdant Green and Lemon Yellow Opal

Cover: *Scenic window for private residence.* Single panel from 24 panel set. Savoy Studios, Portland Oregon.

Solar Disc #10. By Dan Neil Barnes, Lexington, Ky. 30" dia. decorative lighting sculpture, 65-95 iridized, worked metal and wood.

Streamer



12-297
Clear, White, Gold-Pink and Blue with Yellow Highlights and Clear Streamers



12-543
Regatta Blue and Purple with Cream and White Highlights and Clear Streamers

**Fracture/
Stringer**



14-05
Clear with White Fractures and Black Stringer

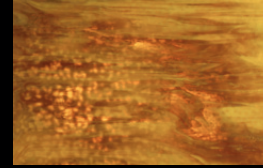


14-406
Clear with Blue and White Fractures and Blue Stringer



14-524
Clear with White and Plum Fractures and Black Stringer

Spot Mottle



20-362
Goldenrod Opal with Transparent Amber



20-765
Chartreuse Opal with Light Green Transparent

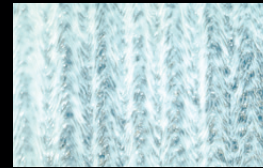


20-918
Red-Amber Opal on pale Amber Transparent



20-92
Antique White Opal with Yellow-Amber Transparent

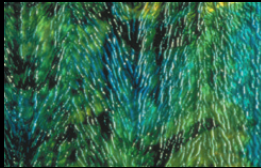
**Herringbone
Granite
Ripple**



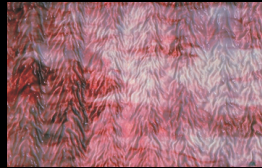
50-05
White



50-14
Dark Brown and Light Brown Opal with Midnight Green Highlights



50-15
Emerald, Chartreuse and Turquoise Green



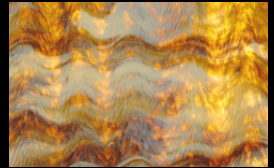
50-29
Gold-Pink and White



50-542
Cobalt Blue, Dark Purple and Regatta Blue with Clear and White Highlights



50-74
Emerald Green, Spring Green and Light Green



50-912
Butterscotch and Coffee Brown Opals

**Granite
Ripple**

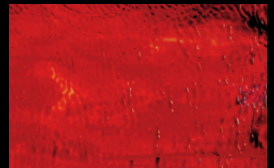


51-361
Goldenrod Opal on White



51-914
Dark Brown with Coffee Brown and Butterscotch Opals

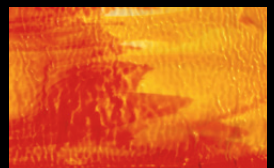
**Smooth
Ripple**



52-20
Ruby and Red on White



52-48
Aqua Blue Opal and Sea Green on White with Cobalt Blue Highlights



52-62
Lemon Yellow Opal, Grenadine Red and Pumpkin Orange on White

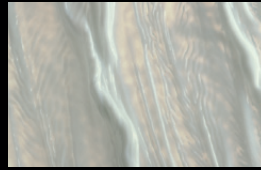


Peacock Lamp, detail. By Gale Obler, Joshua Tree, California. The multi-color ripple border rows, outstanding glass selection and fine craftsmanship make this reproduction of the classic Tiffany design stand out.

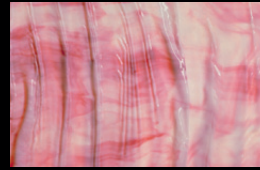
Drapery



55-04
Cream with Gold-Pink,
Gold-Purple and Occasional
Spring Green Highlights



55-05
White



55-29
Gold-Pink and White

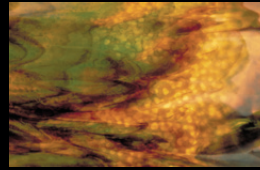
Streaky



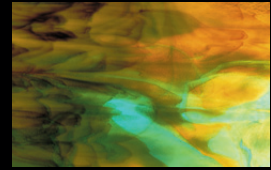
60-005
Clear with Wispy White Opal



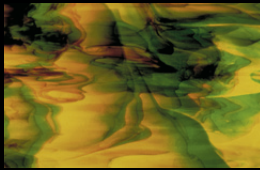
60-05
White



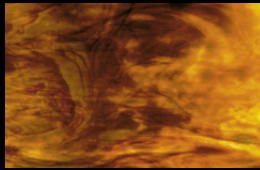
60-14
Dark Brown and Light Brown
Opal with Midnight Green
Highlights



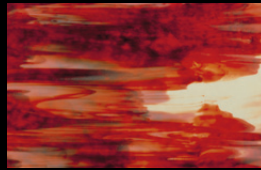
60-16
Turquoise and Amber
Opal with Coffee Brown
Highlights



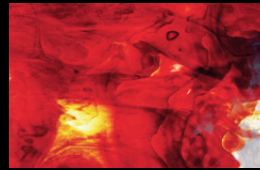
60-165
Emerald Green, Golden
Brown and Warm Yellow with
Dark Brown Highlights



60-171
Cappuccino, Belgian
Chocolate and Paprika with
Occasional Teal Highlights



60-20
Ruby and Red on White



60-25
Crimson Red, Grenadine
Red, Pumpkin Orange with
White and Clear Highlights



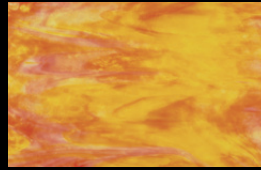
60-285
Cream and Gold-Pink with
Clear Highlights



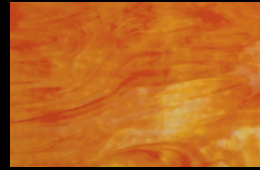
60-287
Cream, Gold-Pink and Forest
Green Opal



60-290
Gold-Pink and Yellow-Amber
on White



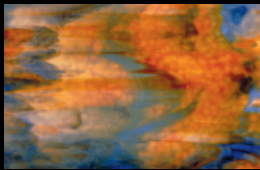
60-291
Gold-Pink and Lemon Yellow
Opal on White



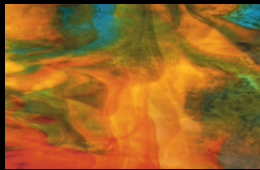
60-37
Red-Orange, Pumpkin
Orange and Yellow Opals
on White



60-38
Fern Green, Red-Orange and
Pumpkin Orange with Brown
Highlights



60-39
Cobalt Blue and Red-Orange
on White with Ruby and
Green Highlights



60-391
Lemon Yellow Opal, Tropical
Blue and Grenadine Red
with Green Highlights



60-41
Dark Blue and White with
Amber and Gold-Pink
Highlights



60-466
Sky Blue Opal and White
with Pastel Pink Highlights



60-54
Cobalt Blue and White with
Sky Blue and Gold-Purple
Highlights



60-541
Cobalt Blue and Sky Blue
with Gold-Purple, White and
Violet Highlights



60-543
Regatta Blue and Purple with
Cream and White Highlights



60-60
Yellow and Orange Opals on
White with Spring Green and
Dark Green Highlights

Tiffany Restoration. Four color-matched drapery colors by Uroboros allowed a successful restoration of major damage by hurricane Ike to Tiffany's 'Christ and the Children' window in the Trinity Episcopal Church in Galveston, Texas.

"We were surprised how close the colors and textures of the Uroboros drapery glasses were to the original Tiffany." Garrick Holey, Willet Hauser Architectural Glass





ART GLASS SHEET SIZES

5.0 sq. ft.	24" x 30" (61 x 76 cm)	avg. weight 8.25 lbs (3.74 kg)
4.0 sq. ft.	24" x 24" (61 x 61 cm)	avg. weight 6.60 lbs (3.00 kg)
2.5 sq. ft.	24" x 15" (61 x 38 cm)	avg. weight 4.20 lbs (1.90 kg)
1.25 sq. ft.	12" x 15" (30.5 x 38 cm)	avg. weight 2.1 lbs (0.9 kg)
1.0 sq. ft.	12" x 12" (30.5 x 30.5 cm)	avg. weight 1.65 lbs (0.75 kg)

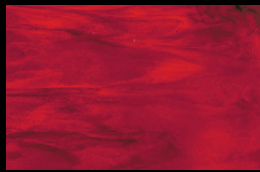
TYPICAL THICKNESS: Hand rolled smooth texture 0.125" (3 mm).
Textured styles are thicker.

TYPICAL CASE DIMENSIONS AND WEIGHTS:

Full crates contain 45 sheets (35 if rippled).
Outside dimensions of crate: 36" L x 14"D x 31"H (91 x 36 x 79cm).
Typical packed weight per crate: 413 lbs (187 kg).
Crates per 20' shipping container: 76.



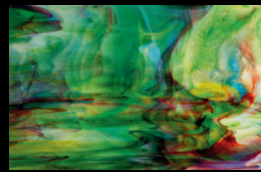
60-61
Orange Opal and Ruby on
White with Spring Green and
Dark Green Highlights



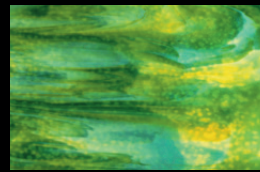
60-625
Red Opal with Ruby Red



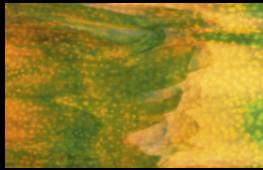
60-64
Gold-Pink and Ruby on
White with Spring Green and
Emerald Green Highlights



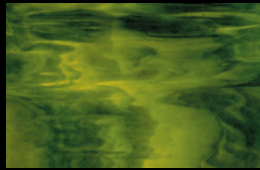
60-70
Emerald Green, Spring
Green and Light Green w/
Red, Blue, Amber Highlights



60-74
Emerald Green, Spring
Green and Light Green



60-751
Fern Green and Honey Ivory
on White with Light Brown
Highlights



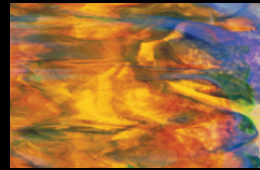
60-77
Forest Green and Chartreuse
Opal



60-91
Honey Amber and Coffee
Brown Opal with Emerald
Green Highlights



60-915
Golden Amber and Yellow
with White Highlights



60-96
Yellows, Blue Opal, Red
and Green with Gold-Pink
Highlights

Granite



65-05
White



65-14
Dark Brown and Light Brown
Opal with Midnight Green
Highlights



65-145
Dark and Light Brown with
Midnight Green Highlights
and Brown Streamers



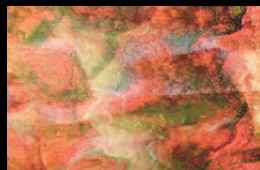
65-17
Light Brown and Dark Brown
Opals



65-19
Light Brown and Dark Brown
Opals with Sky Blue



65-20
Ruby and Red on White



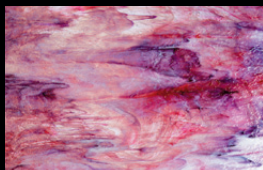
65-287
Cream, Gold-Pink and Forest
Green Opal



65-29
Gold-Pink and White



65-293
Jonquil, Raspberry and
Light Blue with Violet Blue
Highlights



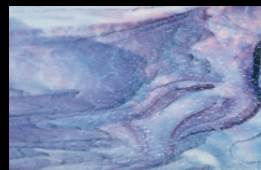
65-299
Clear, White, Gold-Pink and
Gold-Purple



65-35
Canary Yellow Opal



65-48
Aqua Blue Opal and Sea
Green on White with Cobalt
Blue Highlights

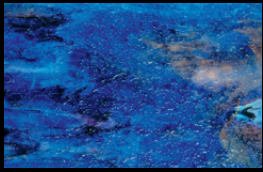


65-49
Gold-Purple and White



65-540
Sky Blue, White, Cobalt Blue
and Gold-Purple

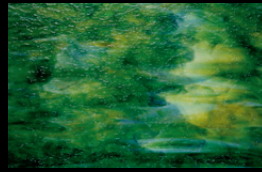
Above: Original design copper-foil lamp. By Kurumi Tokushige, Kyoto, Japan. Unique shade panels are red opal sheet glass fused with black stringer.



65-542
Cobalt Blue, Dark Purple and
Regatta Blue with Clear and
White Highlights



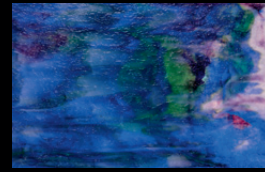
65-59
Gold-Pink, Spring Green and
Yellow-Green on White



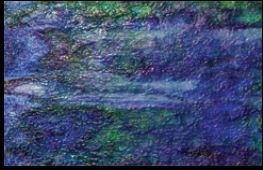
65-74
Emerald Green, Spring
Green and Light Green



65-785
Antique White and Forest
Green Opals with Seacrest
Green and Dark Brown



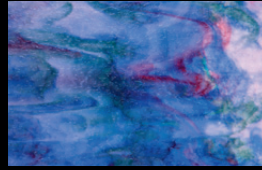
65-85
Royal Blue and Sea Green
with Gold-Pink, Gold-Purple
and White Highlights



65-85 IR
Rainbow Iridescent over
Royal Blue, Sea Green with
Gold-Pink and Gold-Purple



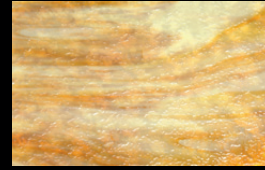
65-850
Double Gold-Pink and Gold-
Purple on Royal Blue with
Sea Green and White



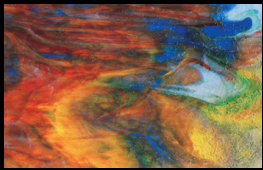
65-851
Sky Blue and Sea Green
with White and Gold-Pink
Highlights



65-86
Tropical Blue and Grassy
Green on Sea Foam with
Pink, Green and Blue Frac



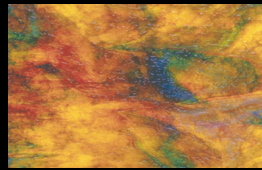
65-92
Antique White Opal with
Yellow-Amber Transparent



65-95
Royal Blue and Yellow
Amber with Red, Orange,
Green, Gold-Pink & White

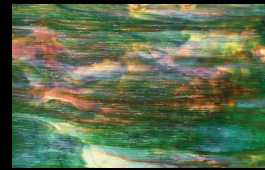


65-95 IR
Rainbow Iridescent over
Royal Blue, Yellow-Amber,
Red, Green and Gold-Pink



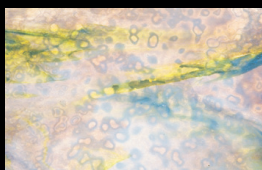
65-951
Yellow-Amber, Red and Blue
with Gold-Pink and Emerald
Green Highlights

Fibroid



70-70
Emerald Green, Spring
Green and Light Green w/
Red, Blue, Amber Highlights

**Granite
Mottle**



66-030
Pastel Pink Opal on White
with Plum and Sea Green
Highlights

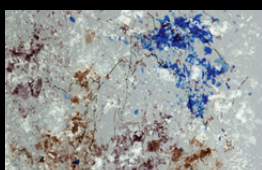


66-366
Canary Yellow Opal and
Golden Yellow on White



66-793
Khaki Opal, Dark Green and
Yellow-Green with Cream

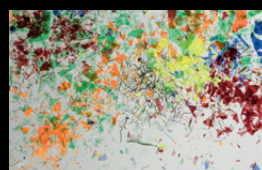
Collage



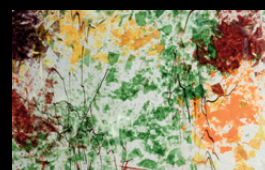
CG-Winter
Clear with White, Blue, Plum,
and Taupe Fractures and
Black Stringer



CG-Spring
Clear with White, Gold-Pink
and Green Fractures and
Dark Green Streamer Bits



CG-Summer
Clear with Orange, Yellow,
Green, Red, Blue Fractures
and Green Streamer Bits



CG-Fall
Clear with Amber, Orange,
Red, Plum and Green
Fractures and Black Stringer



**UROBOROS®
GLASS STUDIOS**

2139 N. Kerby Avenue
Portland, OR 97227 USA

503-284-4900
Fax: 503-284-7584

uroboros.com
email:
uroboros@uroboros.com

Ring Mottle Variety Pack 'RMV'

Improve the realism of your work with our hand-rolled flower, background, sky, and leaf colors. 8 pieces, 12"x12" (30.5x30.5cm) each. Colors vary.



Garden Variety Pack 'GVP'

Hand selected by our talented crew, these complimentary colors and styles are intended for use in a single representational project. Includes flower, leaf, stem, and background colors and styles. 25 pieces, 6"x12" (15.2x30.5cm) each. Colors vary.

Flower Power 'FP'

Get a bouquet of hand-rolled flower colors in this eye-poppin' pack. 8 pieces, 12"x12" (30.5x30.5cm) each. Colors vary.



Leaves and Branches 'LB'

Improve depth and realism by using our hand-rolled greens and browns in your next leaf or branch areas. 8 pieces, 12"x12" (30.5x30.5cm) each. Colors vary.



Cut Ups 'CUPS'

Explore the full range of Tiffany style Art Glass at its hand-rolled best. Contains flower, leaf, stem, background, and sky tints in a variety of styles and textures. 20 pieces, 12"x12" (30.5x30.5cm) each. Colors vary.

Prime Cuts 'PC'

Our signature Art Glass variety case for studios or store display contains a broad range of our best Art Glass styles to jazz up representational work. Includes 25 pcs 12"x12" (30.5x30.5cm), 60 pcs 9"x12" (23x30.5cm), and 50 pcs 6"x12" (15.2x30.5cm). Totals approximately 90 sq ft. (8.4 sq m) or 150 lbs (68kg) net weight. Colors vary.

Short Cuts 'SC'

When you want a quick boost for your studio color palette, but need a larger size, our Short Cuts are the right Art Glass for you. From the mysterious to the sublime, they never fail to please! Contains 20 handpicked 'Curious' half-sheets, including 1 iridescent, all 15"x24" (38x61cm) each. Totals 50 sq ft (4.6sq m) or 83 lbs (37.7kg) net weight. Colors vary.

Mosaic Variety Pack 'MVP'

Specially picked to add richness and realism to mosaic flower petals, foliage, and branches. Contains 8 pieces, 12"x12" (30.5x30.5cm) each. Colors vary.



Heads and Tails Box 'HT-1'

Designed to provide a variety of hand-rolled styles and color at an economical price, this small box of vibrant end-cuts from our sheet-making process fits the bill. Contains approximately 20 pieces at 36 lbs (16.3 kg) net weight, or 22 sq ft (2 sq m).



Heads and Tails Crate 'HT-2'

A store-sized crate of Heads and Tails displays a variety of

hand-rolled styles and color at an economical price. Made from selected end-cuts saved from our sheet-making process. Packed in wooden crates, each containing approximately 180 lbs. (81.8kg) net weight, 110 sq ft (10.2 sq m).

Art Glass Sample Set 'SB'

Samples are picked to represent typical color, mix, texture and opacity. Used in conjunction with the images in this catalog or online (which show a half-sheet area) you'll get a good idea of the look and feel of each item. Approximately 140 pcs, 2.5"x2.5" (6.3x6.3cm) each.



Rainbow Mini-Crate 'RMC'

This dazzling rainbow of color will suit the most discriminating leprechaun! Contains at least 10 distinct colors, primarily opals: Reds, Oranges, Yellows, Greens, Blues, and White. Styles are primarily solids, with at least 2 Ring Mottle and Streaky choices. Colors vary. Each sturdy wooden mini-crate contains 50 sq ft. (4.7sq m), all cut to 12"x 12" (30.5x30.5cm).



Visit uroboros.com for more news on products and artists.