

TURN+

Design: Nao Tamura



Ambientec

クリスタルガラスと
新開発のオリジナル光源を使用し、
これまでにない透明感のある
温かみのある灯りをつくり出します。

TURN 同様の削り出した金属の素材から
3種類のバリエーションをベースに、
職人により磨き上げられたランプシェード、
亜鉛ダイキャストのケージで構成し
デザインを最高の質感で実現しました。

Crystal glass diffuser, and
in-house developed new light source
“sunny side up” LED,
the beauty new essence by Ambientec
bring greater depth to the light by
guaranteeing natural refraction.

Solid metal material carving out like TURN,
brass, stainless steel, and aluminum black body,
beautifully polished handcrafted
crystal glass diffuser,
and zinc die casting “+” formed cage,
these greatest materials
led to birth “TURN+”





Photo : danielkaihirao



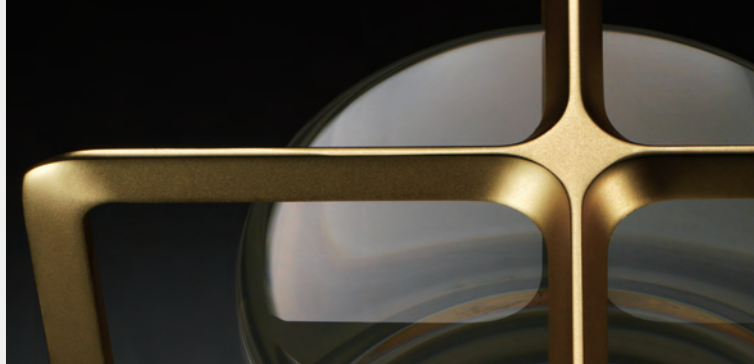
Photo : danielkaihirao

手元を照らすタスクランプ TURN と、
空間の雰囲気をつくるアンビエントランプ TURN+。
デザインの親和性だけでなく、ともにお使いいただくと
一層上質な空間をつくることができます。
また、それぞれの充電台を共用することができます。

The task lamp TURN that gives ideal warm light at hand,
and the ambient lamp TURN+ is something to build a personal and
sentimental relationship with.

More than a harmonious affinity in design, when using together,
the TURN family creates a sophisticated and elegant space with
blending the layers of the individual light nature.

The charger board can be used both for TURN and TURN+.



＋のアイコン部品(ケージ)は、亜鉛ダイキャスト製。
The iconic cage part “+” is made by zinc die casting.

丁寧に磨き上げられた
クリスタルガラス。
Carefully polished crystal glass.

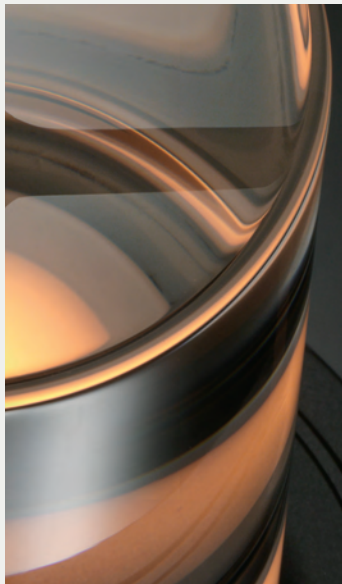


Photo : Hiroshi Iwasaki







金属を削り出したパーツで構成された
美しいフォルム。

Carved out and polished metal
to perfect jewel beautiful form.

TURN+

Design: Nao Tamura



Product name	TURN+ Stainless Steel	TURN+ Brass	TURN+ Aluminum Black
Product code	TP-01SS	TP-01BS	TP-01AB
Main materials	Main body base/ charger stand Stainless Steel	Brass	Aluminum
	Cage	Zinc alloy	
Other	Crystal glass, ABS, silicone rubber, etc.		
Surface treatment	Main body base/ charger stand Not processed	Clear coating	Anodized oxide coating
	Cage Chrome plating	Gold plating	Black baking
Dimensions (mm)	Outer diameter: 89 Height:165(Main body) Height:175(Including charger stand)		
Weight (g)	Main body 1350	1390	1030
Light source	Ambientec original LED "sunny side up"		
Color rendering index	Ra95 or more		
Dimming level	LOW	MID	HIGH EX-HIGH
Power consumption (w)	0.03	0.15	0.6 1.5
Color temperature (k)	1900	1900	2300 2400
Battery run time (h)	500	120	30 12
Charging	USB charging: Approx. 6 hours		
Power supply	Rechargeable lithium-ion battery, 3.6 V / 5200 mAh		
Waterproofing	IP66 equivalent* (Charger stand and USB AC adapter are not waterproof) *IP66 : Indicates protection from dust and high-pressure water jets from any direction.		
Accessories	   		
	Glass spacer for transportation	USB AC adapter AMB-AC02	USB cable (Type-C) AMB-CAB03
			Charger stand (Can be shared with TURN)