



CORE

LANDSCAPE
PRODUCTS

COMMERCIAL & RESIDENTIAL SLOPES

SUSTAINABLE LANDSCAPING SOLUTIONS



Certified



Corporation



GROUND STABILIZATION

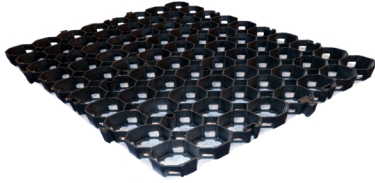
HIGH LOAD CAPACITY | NO RUTS

SUPERIOR DRAINAGE | EROSION CONTROL

CORE FOUNDATIONS

Permeable paving grid systems lay the foundation for functional, earth-friendly, and beautiful surfaces. We recommend 100% virgin polypropylene on steep slopes for maximum load capacity.

60-40 | EXTRA HEAVY DUTY GRAVEL



Use: commercial parking lots, sloped driveways, loading ramps, construction entry/exit routes, fire-access lanes, etc.

Panel coverage: 12.4 sq ft (1.15)

Panel dimensions: 45.3" x 39.4" x 1.6" (1150mm x 1000mm)

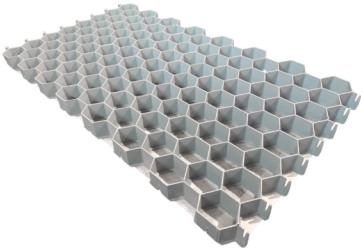
Load bearing capacity: > 62 000 lbs/sq.ft.(Over 300 tons/m²)

Material: Virgin polypropylene (PP)

Suggested aggregate size: 0.2"-0.6"(5-15mm)

Bonus: special octagonal cell with lateral drainage + geotextile weed suppressor heat welded to the grid

50-35 HD | HEAVY DUTY GRAVEL



Use: residential parking & driveways, RV parking, public pathways & picnic areas, slope stabilization, etc.

Panel coverage: 9.7 sq ft (0.9 m)

Panel dimensions: 45.5" x 30.7 " x 1.4" (1156mm x 780mm x 35mm)

Load bearing capacity: >51 200 lbs/sq ft (over 250 tons/m²)

Material: 100% virgin polypropylene (PP) with attached geotextile fabric head welded to the back of each cell

CERTIFICATIONS

AFNOR: NF EN ISO 844:2009

SGS: ASTM D1621-04A (compressive test standard).

LEED: Used in SUDS and LEED compliant porous paving BMPs for ideal draining and minimal environmental impact.

ADA Compliant: Used in ADA disability compliant surfaces for pedestrians, bicycles, & wheelchair traffic.

- ✓ WHEELCHAIR ACCESSIBLE
- ✓ PERMEABLE
- ✓ AFFORDABLE
- ✓ ECO-FRIENDLY
- ✓ ALL WEATHER CONDITIONS
- ✓ AESTHETICALLY PLEASING
- ✓ SAFE & STABLE & STRONG
- ✓ LOW MAINTENANCE
- ✓ HIGH LOAD CAPCAITY
- ✓ REDUCE GHG EMISSIONS



COMPLETED PROJECTS



Property Brothers - Celebrity IOU
Cabot Square, Montreal
Four Freedoms Park, NYC
Commodore Perry Estates, TX

PUMA HQ, Germany
Boardwalk Resort, TX
Travaasa Hana Resort, Maui
Habitat for Humanity, BC

Our honeycomb **interconnecting closed-celled** panels form a **stabilizing base** when filled with aggregate or turf. They are **perfect** for public spaces, driveways, access roads, parking lots, pathways, rooftops, or landscaped parks and gardens.



LANDSCAPE ADD ONS

ONE MINUTE
TO GLOW



Lowell Astrophysical Observatory, AZ

CORE GLOW

- ✔ Aesthetically pleasing
- ✔ Safe & durable
- ✔ Compliant with dark sky policy
- ✔ Lasts 20+ years
- ✔ 12+ hours of glow
- ✔ Reduces light pollution
- ✔ Lights up pathways
- ✔ Charges with sunlight

Commercial Glow Projects

Historical Battlefield Trail, TX | Little New York Trail, AB |
US National Whitewater Center, NC | Lowell Observatory, AZ

ORDERING

ONLINE: CORELANDSCAPEPRODUCTS.CA

Easy ordering via shop.coregravel.ca

BY PHONE: 1 (855) 777 - 2673

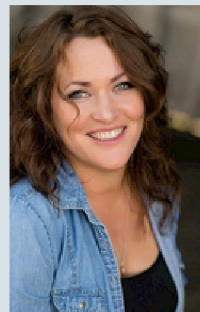
CORE Landscape Products is open from 9-4:30 PST Monday through Friday. Call to speak with a real human being - our team is here to help.

IN STORE: AVAILABLE IN LOCATIONS ACROSS NORTH AMERICA

Check our site for a location near you.

OUR MISSION

A MESSAGE FROM OUR FOUNDER



CORE Landscape Products was founded on the belief that we all have the ability to improve our environment. For us at CORE, that means creating products that both enrich our environment and are sustainable. Our philosophy comes from years of work in the environmental and development field, and a desire to provide a unique quality of service to our clients.

- *f. Rutledge*

