

AMMO



**ASSEMBLY, CARE AND USE
INSTRUCTIONS FOR**

**AMMO630
SPECIAL EDITION**

READ CAREFULLY



**IMPORTANT: RETAIN THESE
INSTRUCTIONS AND ATTACH RECEIPT
TO MANUAL FOR FUTURE REFERENCE.**



Questions, problems, missing parts?

Before returning to your retailer, call our customer service department at 1-866-235-5112, 8 a.m. - 5:00 p.m., CST, Monday - Friday.

www.ammonyc.com

TABLE OF CONTENTS

Safety Instructions	3-4
Included in the Box	5
Operating Instructions	6-10
Maintenance	11
Storing the Pressure Washer	12
Starting after Period of Non-Use	12
Troubleshooting	13
Pump/Motor Parts	14
Motor Parts	15
Pump Parts	16-17
Unloader Parts	18-19
Pressure Washer Limited Warranty	20
Warranty Returns	21
Notes	22-23



Technical Specifications: 1,900 Max PSI | 2.1 Max GPM | 19 Amps
120V 60Hz Induction Motor | Brass Manifold | 3.5 Nozzle

Important Notice

Winterizing or long time storage: Drain all water out of pump. Flush pressure washer with a 50/50 mix of RV antifreeze and water. Relieve system pressure by squeezing gun trigger. When ready to use again, flush pressure washer with clean water to remove antifreeze.



WARNING: This product can expose you to chemicals including lead, DEHP, DINP which is known to the State of California to cause cancer and or lead to birth defects. For more information go to www.P65Warnings.ca.gov



PRECAUCIÓN: Este producto puede exponerle a los productos químicos incluyendo el plomo, DEHP, y DINP, que se saben al estado de California para causar el cáncer y/o defectos de nacimiento. Para más información, vaya a www.P65warnings.gov

SAFETY INSTRUCTIONS



Read and understand these instructions as they pertain to safety. Pay special attention to the safety symbol throughout this manual. Failure to comply with these instructions may result in personal injury or property damage. DO NOT allow children to operate or play on or around this equipment.



1. **WARNING:** Improper grounding can result in electrical shock. The power outlet must be 3-prong, properly grounded, and rated for 20 Amps or greater with a Ground Fault Circuit Interrupter (GCFI).
2. **WARNING:** High pressure spray can be extremely dangerous. Always point the nozzle away from people and animals.
3. **WARNING:** Always turn the power switch on the Pump Unit to the "OFF" position when not in use.
4. Seek emergency medical assistance immediately if any fluid penetrates the skin. The cut may be deeper and more serious than it appears.
5. Always wear eye protection and appropriate clothing when operating the unit.
6. Never spray any part of this pressure washer or any other electrical machine.
7. Do not alter the machine from the manufacturer's design.
8. Keep all safety devices active on the machine.
9. Do not make alterations to the unloader relief valve.
10. Never operate the unit with broken or missing parts.
11. Never use an undersized discharge nozzle.
12. Keep the pressure hose connected to the machine and wand while unit is pressurized.
13. Never leave the wand unattended while the machine is running.
14. Do not secure the wand in the squeezed "ON" position.
15. Follow the chemical manufacturer's recommendations when using chemicals in the soap injector.
16. Understand all safety precautions and first aid for chemicals being used

SAFETY INSTRUCTIONS



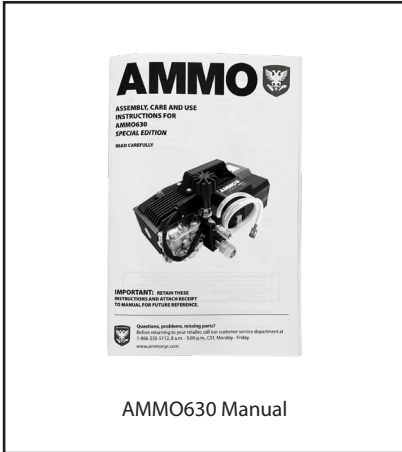
16. Never spray flammable liquids.
17. Do not operate this machine in or around an explosive environment.
18. Position the machine in an area that is protected from external damage.
19. Always place the machine on a level surface.
20. Do not move the unit by pulling on the hose or electrical cord.
21. Never use the unit when under the influence of drugs, alcohol, or medication.
22. No smoking while operating the machine.
23. Only operate the machine with sufficient water supply to the pump.
24. Always use water that is clear and free from particles.
25. Always check and maintain proper oil levels described in the Maintenance section on pg. 13 of this manual.
26. Protect your machine from damage due to freezing during storage. Follow the winterizing instructions in the Storing the Pressure Washer section on pg. 14 of this manual.
27. Always follow all other guidelines and Safety Instructions described on pg. 3-4 of this manual.



Tighten all connections and replace worn parts before starting the machine. Sudden release of high pressure streams may result if connections detach during use. This can cause serious injury. Never disconnect any part of the unit while the machine is running or before relieving system pressure, it is dangerous. Seek medical attention if an injury ever occurs.

INCLUDED IN THE BOX

Box Weight: 63lbs | Box Dimensions: 24x16x16"



OPERATING INSTRUCTIONS

BEFORE STARTING THE PRESSURE WASHER



1. Read all safety instructions throughout the manual.
2. Place unit on dry, firm ground for optimum lubrication of pump.
3. The pressure washer should be as close as possible to the water supply.



4. Tighten all hoses and connections. Check parts and replace if needed.
5. Check oil levels prior to each use. Oil should cover the indicator line on the dipstick.



6. To prevent damage and excessive hose wear, position the pressure washer so the hose does NOT extend across traffic areas. Make sure there are no kinks or twists in the hose.
7. Check to determine if the water supply to the pressure washer exceeds the output of the pump. The output of this unit is 2.1 gpm (gallons per minute), so the water supply must deliver at least 2.5 gpm.



Calculate gpm flow rate by running the water supply into a pail for one minute. Measure the gallons in the pail. If it is at least 2.5 gallons in the minute, your supply is adequate. Your water supply must be clean and free of debris. Use water with a temperature of less than 140°F.

Note: This unit is supplied with a “Total Stop System” (TSS) that allows the pump to run only when the gun trigger is squeezed. Releasing the trigger will temporarily stop the machine. Squeeze the trigger on the gun to restart the machine. Avoid rapidly squeezing the trigger to prevent damage to the TSS.

OPERATING INSTRUCTIONS

STARTING THE PRESSURE WASHER

1. Turn on water supply to pump inlet.
2. Plug the power cord into a properly grounded 20 Amp, 120 volt outlet.
3. Purge air from system by removing nozzle and squeezing gun trigger before starting machine. Let water run until there is a steady stream of water coming out of the nozzle.
4. Turn power switch on Pump Unit to "on" (I) position.
5. Squeeze trigger on gun to start machine.

DURING OPERATION



1. Position the unit so the operator has easy access to the pressure washer and its controls.
2. Do not use the pressure washer outdoors if it is raining, and do not spray the motor or any of its connections.
3. Do not use chemicals or agents which are not compatible with Buna-N, PVC (polyvinyl) or neoprene covering of the hose.
4. Do not use acids or caustic material with this unit. **Damage due to use with incompatible material will not be considered for warranty.**
5. Always test a small area to avoid possible damage to surfaces.

OPERATING INSTRUCTIONS

USING SOAP INJECTOR

Your pressure washer Pump Unit is supplied with a downstream low pressure soap/chemical injector. This is used for adding soap/chemical to the water after it has flowed through the pump.

Note: The injector works only with the supplied black soap nozzle.

To draw soap/chemical into the water stream, insert the filter end of the detergent hose into the soap/chemical. Do Not use powders, granular, high viscosity detergents or acidic based detergents/chemicals in the injector.

Note: Follow the soap/chemical manufacturer's instructions for correct dilution ratios.

To flush the injector, remove the detergent hose and filter from the detergent/chemical tank and place it in a container of clear water. Run water through the entire system to flush out the soap/chemical you were using.

OPERATING INSTRUCTIONS

CLEANING TIPS



Chemicals: Cleaning agents are most effective when the surface is rinsed first to loosen dirt. After pre-rinsing to loosen dirt, then clean with the detergent.

Detergent should be applied from the bottom to the top of the washing area. Apply detergent and allow the detergent to react with the dirt, then rinse from the top to the bottom. This detergent applying and rinsing technique will help to avoid streaks and skips in the washing area.

Never use more detergent than is necessary to clean the surface.

Always follow directions supplied by the detergent manufacturer on the container.

Cleaning: For best results, hold the nozzle 6 – 12" away from the washing surface and use long, slow deliberate side to side strokes, similar to using a paint sprayer. This technique will provide the most effective cleaning impact and minimize streaks and skips in the cleaning process.

Wax: If the pressure washer is used to apply wax, the gun should be held further from the surface to optimize the "misting" effect during application. For best results, follow the directions supplied by the wax manufacturer.

OPERATING INSTRUCTIONS

STOPPING PRESSURE WASHER

1. If the chemical/soap injector was used, rinse with clean water.
Note: Flush chemical line with new container and clean water until discharge is clear.
2. Turn Pump Unit power switch to the "OFF" position.
3. Turn off the water supply.
4. Squeeze the trigger on the wand to relieve the system water pressure and drain as much water as possible.
5. Follow this procedure each time the machine is stopped.



Note: *Squeezing the trigger on the gun when you restart the unit will reduce the startup load of the motor.*

MAINTENANCE

Changing oil is one of the most important and least expensive maintenance items. It will prolong the life of your pressure washer. Change oil after first 50 hours of break-in period, and then every 200 hours or once per year. Demanding environments may require oil changes more frequently.

To change oil: Remove the 17mm oil drain plug on the bottom of the Pump Unit. Refill with 10 ounces of SAE20 or 30W Non-Detergent oil.



Winterizing or long time storage: Drain all water out of pump. Flush pressure washer with a 50/50 mix of RV antifreeze and water. Relieve system pressure by squeezing gun trigger. When ready to use again, flush pressure washer with clean water to remove antifreeze.

Note: See pg.12 "Storing the Pressure Washer"

ROUTINE CHECKS BEFORE EVERY USE

1. Check the water inlet screens for debris. Clean as needed using water and a toothbrush.
Note: Damage can occur if run without filter.
2. Check the nozzle for debris and signs of extensive wear. A worn nozzle will result in poor performance. **Only check the nozzle with the motor turned to the "OFF" position and the pressure relieved from the system!**
3. Check all fittings and connections for leaks and worn sealing areas. Replace worn components.

STORING THE PRESSURE WASHER



Severe damage could occur by water freezing inside the components. To prevent costly repairs, follow these steps:



1. Make sure the unit is "OFF," water supply is disconnected, and system pressure has been relieved by squeezing the trigger on the gun.

2. Install a suction hose from the pump inlet (garden hose fitting) into a gallon of NON-TOXIC RV anti-freeze. Following operating instructions start the machine and squeeze trigger on the spray gun allowing the pump to draw anti-freeze through the entire system. Once the anti-freeze appears at the end of the wand, turn the machine "OFF".



3. Squeeze gun trigger to relieve pressure from system. Disconnect the high pressure hose from the high pressure outlet and put the hose, gun/wand and owners manual in a secure place to prevent unauthorized people from using the machine.



4. When ready to use the pressure washer again, reinstall the high pressure hose and water supply hose. Turn the water on and squeeze the trigger on the gun to send water through the system. Dispose of the anti-freeze/water solution safely where it will not be harmful to the environment, people or animals.

STARTING THE MACHINE AFTER A PERIOD OF NON-USE



Long periods of non-use can cause calcium and iron deposits inside the pump. Starting the machine could cause damage to the pump. Insert a flat blade screw driver through the hole in the motor end housing and rotate the motor one revolution clockwise and counter-clockwise. Remove screwdriver and start the motor. It should start up easily.



Power off machine before starting.

TROUBLESHOOTING

LOW PRESSURE

CAUSES	SOLUTIONS
Plugged Nozzle.	Clean and check for blockage.
Insufficient flow of water to the pump.	Increase water flow to the pump.
Plugged inlet screen.	Pull out and clean screen carefully.
Using restrictive supply hose.	Use larger diameter supply hose.
Debris in pump valves. Worn or damaged pump valves.	Remove valve caps. Inspect valves for debris, wear, or damage. Replace if needed. Torque valve caps to 300 in/lbs.

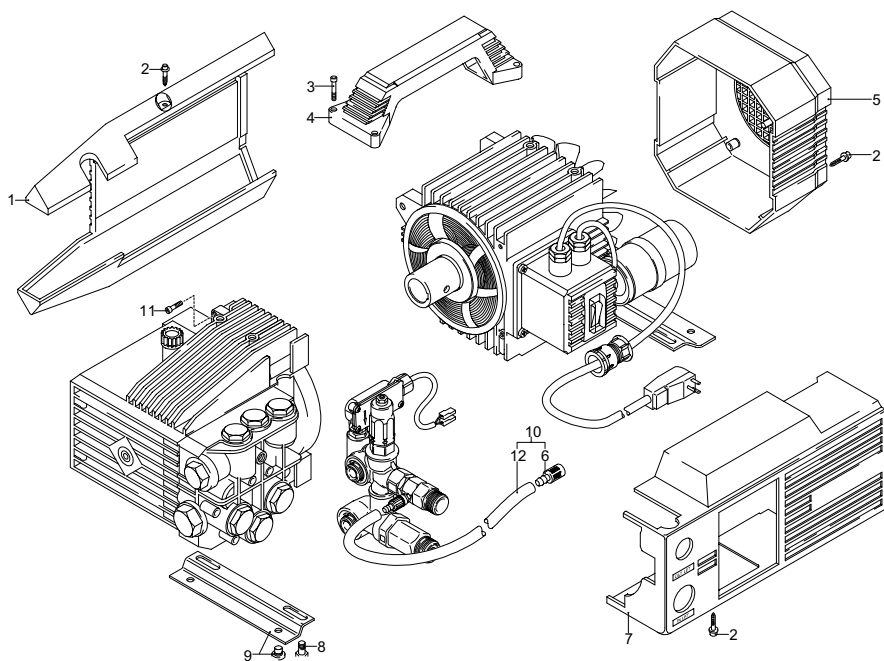
SURGING PRESSURE

CAUSES	SOLUTIONS
Restricted supply by under-sized fittings or inlet.	Use larger fittings and clean the inlet screen.
Insufficient flow of water to the pump.	Increase water flow to the pump.
Air trapped in the pump head.	Squeeze the gun trigger before starting the machine. Start the engine and run water until air is purged out of the system.
Debris in pump valves. Worn or damaged pump valves.	Remove valve caps. Inspect valves for debris, wear, or damage. Replace if needed. Torque valve caps to 300 in/lbs.

SOAP INJECTOR NOT WORKING

CAUSES	SOLUTIONS
Using a high pressure nozzle instead of the soap nozzle.	Install the correct soap nozzle (black nozzle included in kit)
Back pressure from the addition of extra hose.	Do not use additional high pressure hose.
Detergent adjustment knob turned off.	Turn detergent adjustment knob counter-clockwise to open.
Plugged injector valve.	Check and clean the injector.

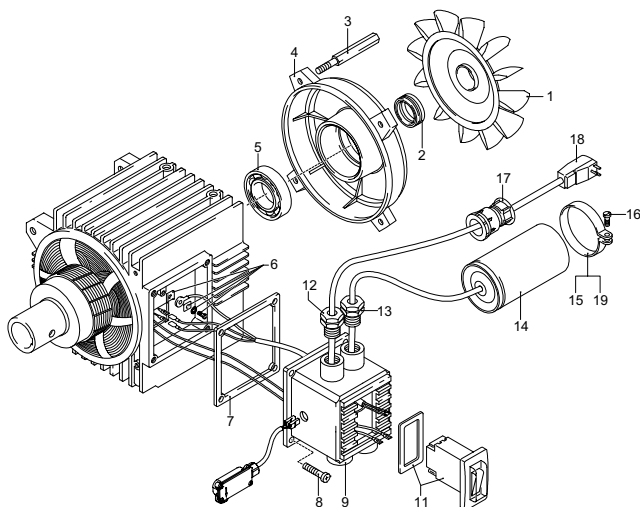
AMMO630 - PUMP/MOTOR PARTS



Pos.	Code	Description	Q
1	1260273	Casing Black	1
2	1261551	Screw	8
3	180030	Screw	4
4	1260710	Handle	1
5	1261760	Fan Cowling	1
6	1341030	Filter	1

Pos.	Code	Description	Q
7	1272811	Casing Black	1
8	1260470	Screw	4
9	1260830	Base	2
10	1269115	Hose Assembly	1
11	1260780	Screw	4
12	1262790	Detergent Hose	1

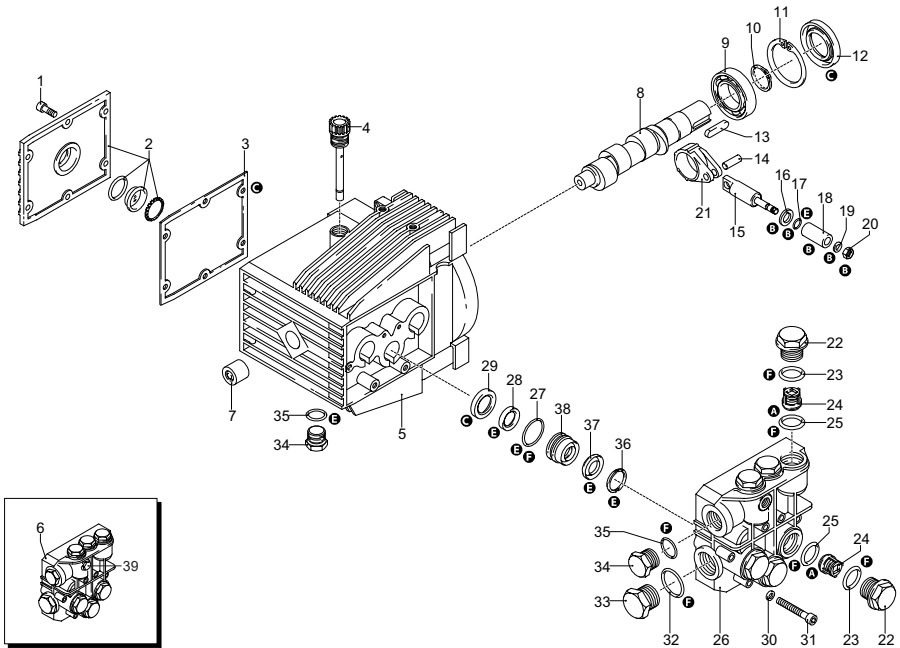
AMMO630 - MOTOR PARTS



Pos.	Code	Description	Q
1	1260300	Fan	1
2	1260970	Seal	1
3	1260360	Stud Bolt	4
4	126960	Water Shield	1
5	1260950	Bearing	1
6	1269100	Ground Terminal	1
7	1260400	Gasket	1
8	1261560	Screw	4
9	1260341	Box	1
10	-	-	-
11	1272030	Switch	1
12	1271950	Cable Retainer	1

Pos.	Code	Description	Q
13	1269090	Ring Nut	1
14	1263550	Capacitor	1
15	1340280	Clamp Ø 50	1
16	1271880	Screw	1
17	1262370	Nut	1
18	1261820	Cable	1
19	1345610	Clamp Ø 55	1

AMMO630 - PUMP



UN_CE_1730-JQ

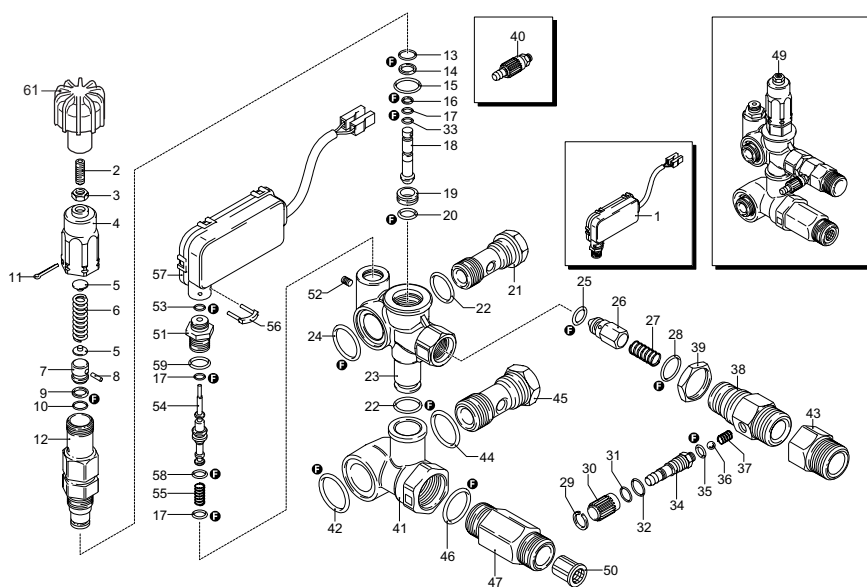
AMMO630 - PUMP PARTS

Pos.	Code	Description	Q
1	1260760	Screw (48 in/lbs)*	6
2	1269101	Cover	1
3	1260040	Oil Seal	1
4	1260480	Dipstick	1
5	1260010	Pump Body	1
6	1269306	Head Assembly	1
7	1260050	Bushing	1
8	1260190	Shaft	1
9	1320370	Bearing	1
10	1260770	Ring	1
11	1260790	Ring	1
12	1260750	Ring	1
13	1380520	Key	1
14	1260080	Pin	3
15	1260070	Piston	3
16	1260091	Plate	3
17	480480	O-ring	3
18	1260120	Piston	3
19	1260100	Washer	3
20	1260110	Nut (106 in/lbs)*	3
21	1260060	Connecting-rod	3
22	1260162	Valve Cap (300 in/lbs)*	6

Pos.	Code	Description	Q
23	960191	O-ring	6
24	1269050	Complete Valve	6
25	880831	O-ring	6
26	1230023	Head	1
27	1260421	O-ring	3
28	1260441	Water Seal	3
29	1260460	Oil seal	3
30	1381550	Washer	6
31	680570	Screw (137 in/lbs)*	6
32	180102	O-ring	1
33	820361	Plug	1
34	1980740	Plug	2
35	740291	O-ring	2
36	1520120	Ring	3
37	1260131	Water Seal	3
38	1260151	Piston Guide	3
39	620301	Plug	1
A	1864	Valve Kit	1
B	2628	Piston Kit	1
C	1865	Oil Seal Kit	1
E	2520	Cold Water Seal Kit	1
E	2029	Hot Water Seal Kit	1

* - Torque Specifications in/lbs

AMMO630 - UNLOADER



AMMO630 - UNLOADER PARTS

Pos.	Code	Description	Q
1	43359	Complete TSS Kit	1
2	392840	Screw	1
3	1980300	Nut	1
4	2500540	Insert	1
5	1980220	Plate	2
6	1271070	Spring	1
7	1080041	Piston	1
8	1080070	Pin	1
9	1080401	Ring	1
10	1080250	O-ring	1
11	2500550	Split Pin	1
12	1980210	Piston Guide	1
13	740290	O-ring	1
14	800560	O-ring	1
15	880830	O-ring	1
16	1271770	Ring	1
17	1080192	O-ring	3
18	1271160	Piston	1
19	2460420	Seat	1
20	1080250	O-ring	1
21	1540272	Screw	1
22	390080	O-ring	2
23	1540660	Valve Body	1
24	1140450	O-ring	1
25	1460430	O-ring	1
26	1540170	Shutter	1
27	1080091	Spring	1
28	394280	O-ring	1
29	1560660	Ring	1
30	1560680	Knob	1
31	480560	O-ring Knob	1

Pos.	Code	Description	Q
32	800560	O-ring	1
33	1120681	O-ring	1
34	1560650	Hose Tail	1
35	480480	O-ring	1
36	1250280	Ball	1
37	1560520	Spring	1
38	1540570	Fitting	1
39	1540300	Nut	1
40	1569206	Chemical Injector	1
41	1540280	Suction Fitting	1
42	1540630	O-ring	1
43	1122260	Fitting	1
44	880270	O-ring	1
45	2260420	Screw	1
46	480440	O-ring	1
47	1560900	Fitting	1
48	-	-	-
49	22620	Complete Valve	1
50	1340260	Filter	1
51	1540870	Plug	1
52	1981190	Screw	1
53	1260820	O-ring	1
54	1540881	Piston	1
55	1981320	Spring	1
56	2022201	Fork	1
57	2029787	TSS Box Assembly	1
58	660190	O-ring	1
59	880840	O-ring	1
60	-	-	-
61	230760	Knob	1
F	42451	Gasket Kit	1

PRESSURE WASHER LIMITED WARRANTY

- ☑ **AMMO Electric Pressure Washers come with a 1 Year Commercial Warranty.**
- ☑ **AMMO Electric Pressure Washer Accessories come with a 90 Day Warranty.**

- ☑ **Warranty is to the original purchaser and is non-transferrable.**
- ☑ **Warranty Claim may require product inspection by the Manufacturer.**
(See Liability)

Warranty Conditions:

- **Warranty does not apply to normal wear** (such as but not limited to: seals/ packings, valves, plungers and sealing O-rings), freight damage, freezing damage.
- **Warranty does not apply to misuse** when pump or accessories are altered operated above recommended speeds, pressures, or temperatures.
- **Warranty does not apply to damage caused by aftermarket accessories** not included with original unit.
- **Warranty is void** when failure to follow recommended operating and maintenance procedures, or failure to use OEM replacement parts.
- **Warranty is void** when pump is damaged by:
 - 1) The use of caustic (corrosive) liquids
 - 2) Pump was operated under abrasive or corrosive environments where conditions could cause pump cavitation.

Liability of manufacturer:

- ☑ **Warranty is limited to repair or replacement of parts only.**
- ☑ **Warranty Products must be inspected by the manufacturer.**
- ☑ Returned Product will be Repaired or Replaced Free of Charge if found to be defective and subject to warranty.

After a completed inspection by the manufacturer, warranty is granted/ denied at the sole discretion of the manufacturer when such products are found to be of original defect or workmanship at the time it was shipped from factory.

This warranty is in lieu of all other warranties, expressed or implied, including any warranty of merchantability of any and all other obligations or liabilities on the part of the manufacturers or equipment.

PRESSURE WASHER LIMITED WARRANTY

Customer Return Liability:

- Pumps and Accessories must have a Return RMA#**
 - Pumps must be shipped back with Shipping plug**
 - Shipments without RMA# will be denied**
 - Under no circumstance will the manufacture bare any responsibility for loss of unit, loss of time or inconvenience in any manner.**
- **Customer is responsible for freight costs** to return product for warranty evaluation.
 - The nozzle(s) being used must be returned with the pump unit to be considered for warranty.
 - A shipping plug (supplied) must be installed in the pump before shipping to prevent oil seepage. Failure to secure the plug will result in a maintenance charge.
 - The manufacturer is not liable for freight damage, insurance, labor, or any consequential damages incurred as a result of defective product.
 - **If returned product is found non-warrantable**, associated repair costs and return freight are the responsibility of the customer.

WARRANTY RETURNS

Instructions:

- Have a Purchase receipt ready
- Contact us and receive an RMA# and Packing directions

Contact us:

- General Questions**
- Troubleshooting**
- RMA/ Warranty**

Call our toll-free number at 1-866-235-5112. Customer service is available M-F 8am to 5pm Central Standard Time (CST). A customer service representative will work with you to fix the problem.



AMMO