

NORD DINING TABLE

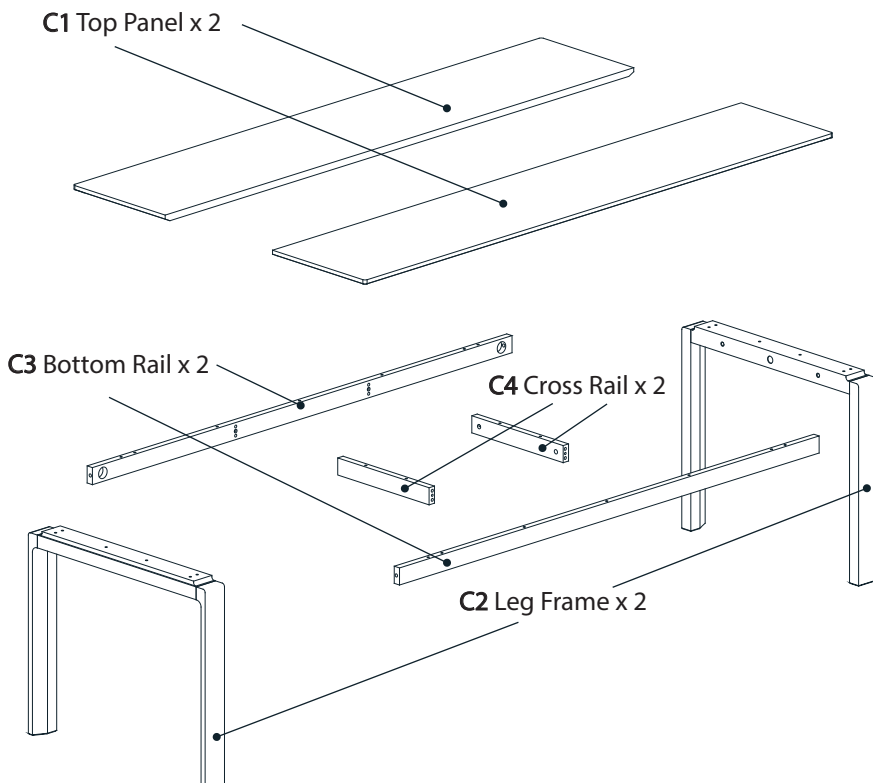
MOSS DESIGN

Placement and Maintenance

Your Nord Dining Table is designed for indoor use on level floors. Furniture with hard lacquer, wax polish or painted surface should be dusted with a dry cloth. Spillages should be wiped up as soon as possible. Our furniture will endure most temperatures in the home but it is best to avoid placing furniture next to heat sources such as radiators or fires.

Step 1

Unpack and identify the parts listed below. It is required to have **2 people to carry and assemble** the units over 50lbs. The assembly workspace should be a non-marring **surface such as carpet**. For missing hardware pieces, visit our website www.mossdesign.us



Tool Not Provided:



Screwdriver



Mallet or Hammer

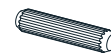
Tool Provided:



T1 Wrench
(M13) x 1



T2 Allen Key
(M4) x 1



H1 Wooden Dowel
(8x35mm) x 12



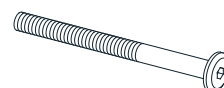
H2 Barrel Housing x 4



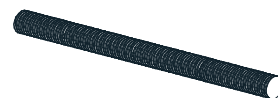
H3 Set screw x 4



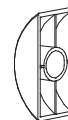
H4 Steel Dowel x 4



H5 Bolt (6x70 mm) x 26



H6 Headless Bolt
(8x74mm) x 4



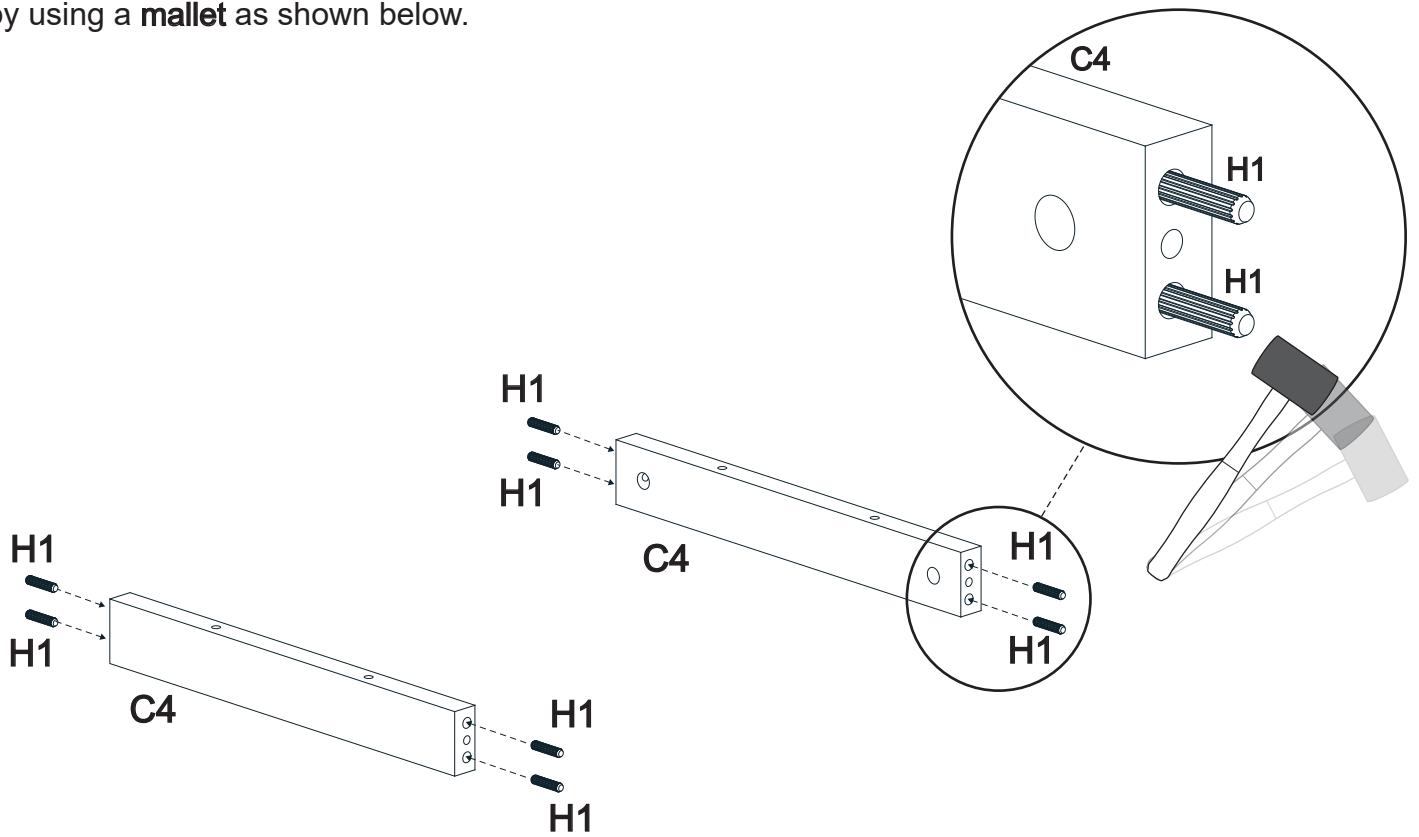
H7 Fixing Head x 4



H8 Hex Nut x 4

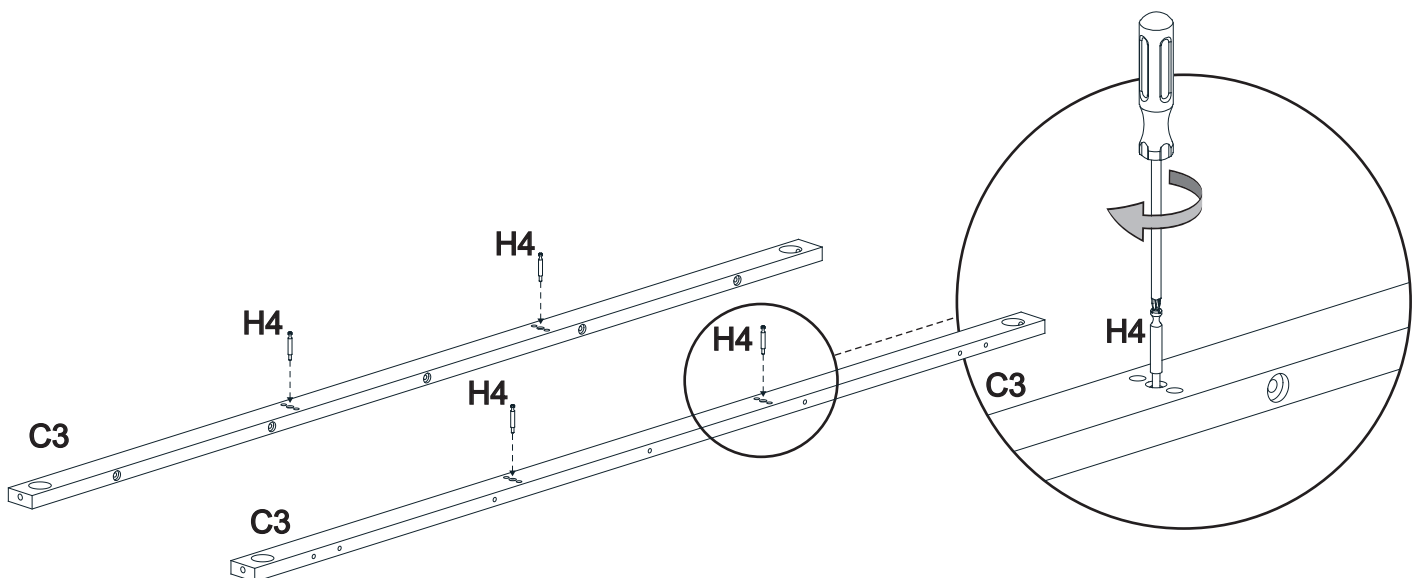
Step 2 - Attach wooden dowels to cross rails.

Place **8x wooden dowels H1** to cross rails **C4** by using a **mallet** as shown below.



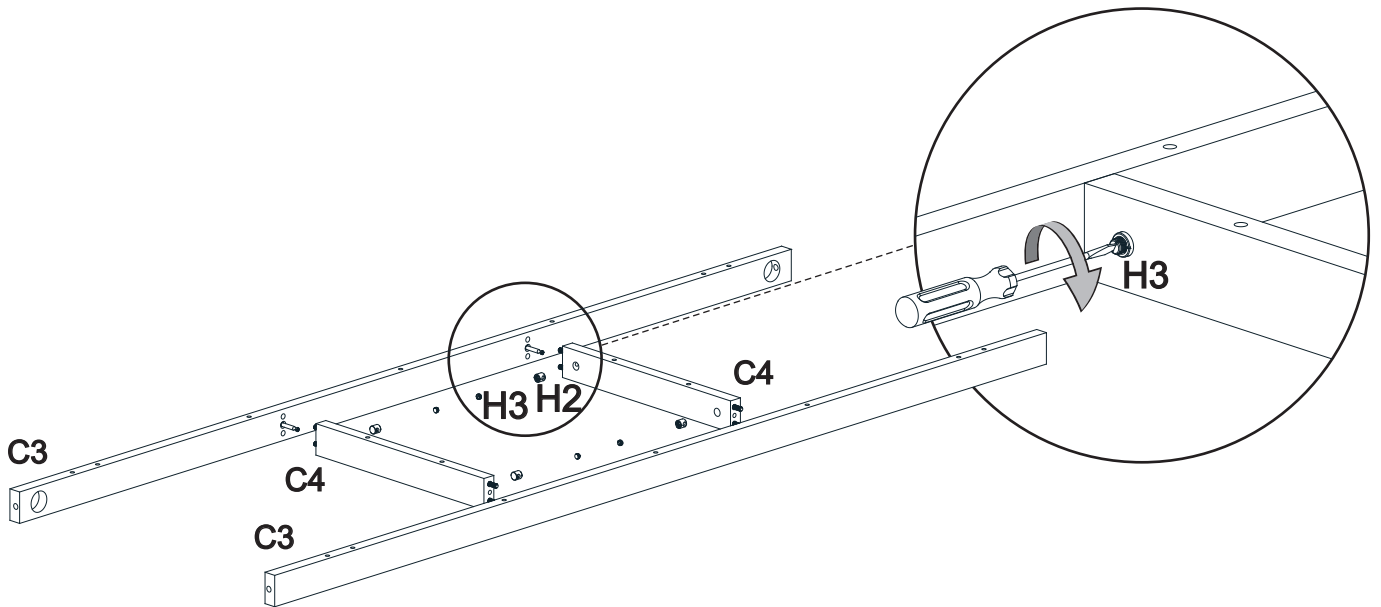
Step 3 - Attach steel dowels to bottom rails C3.

Fix **4x steel dowels H4** by using a **screwdriver** to bottom rails **C3** as shown below.



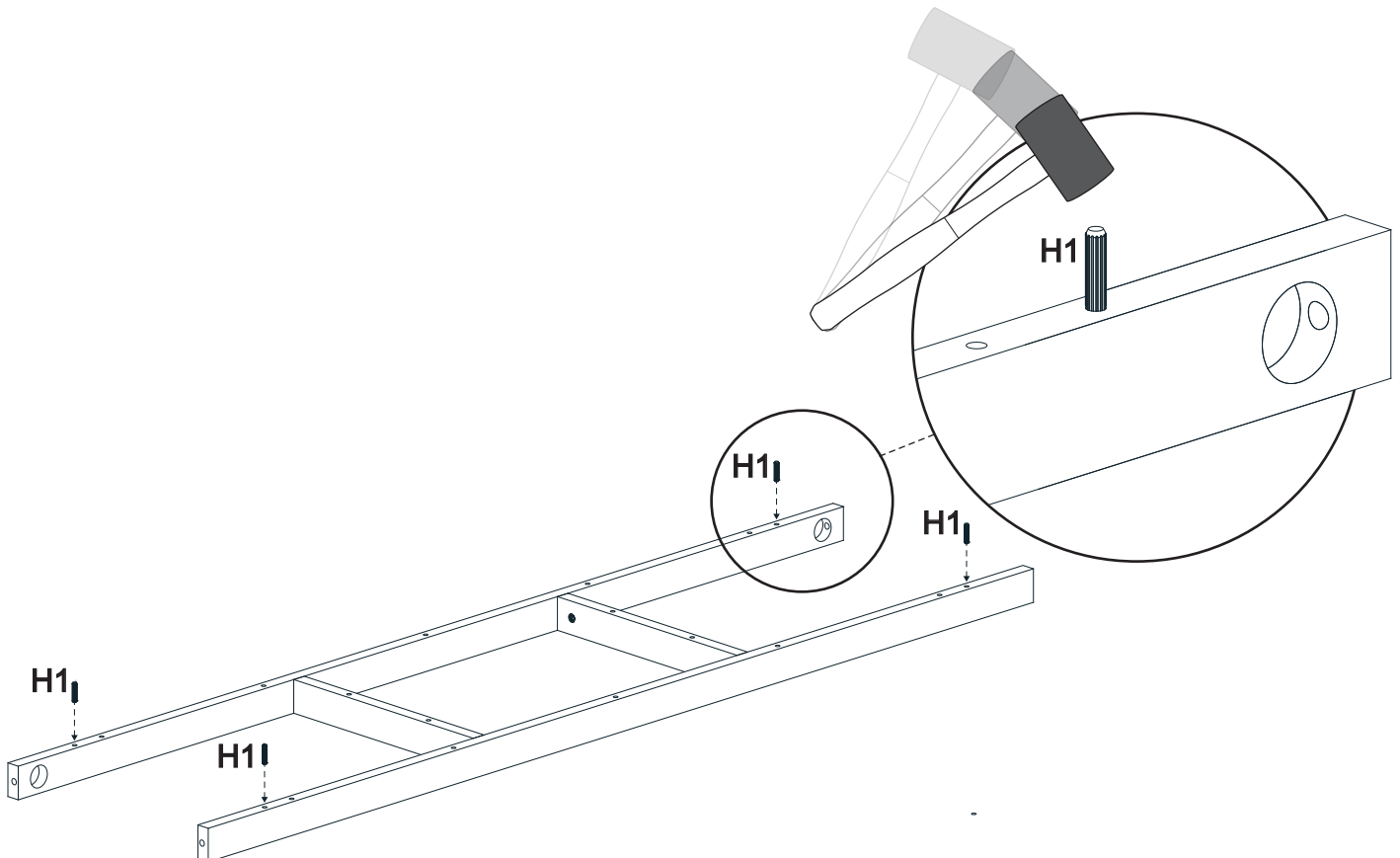
Step 4 - Attach barrel housings to bottom rails.

Place **4x barrel housings H2** and **4x set screws H3** to **bottom rails C3** as shown below.



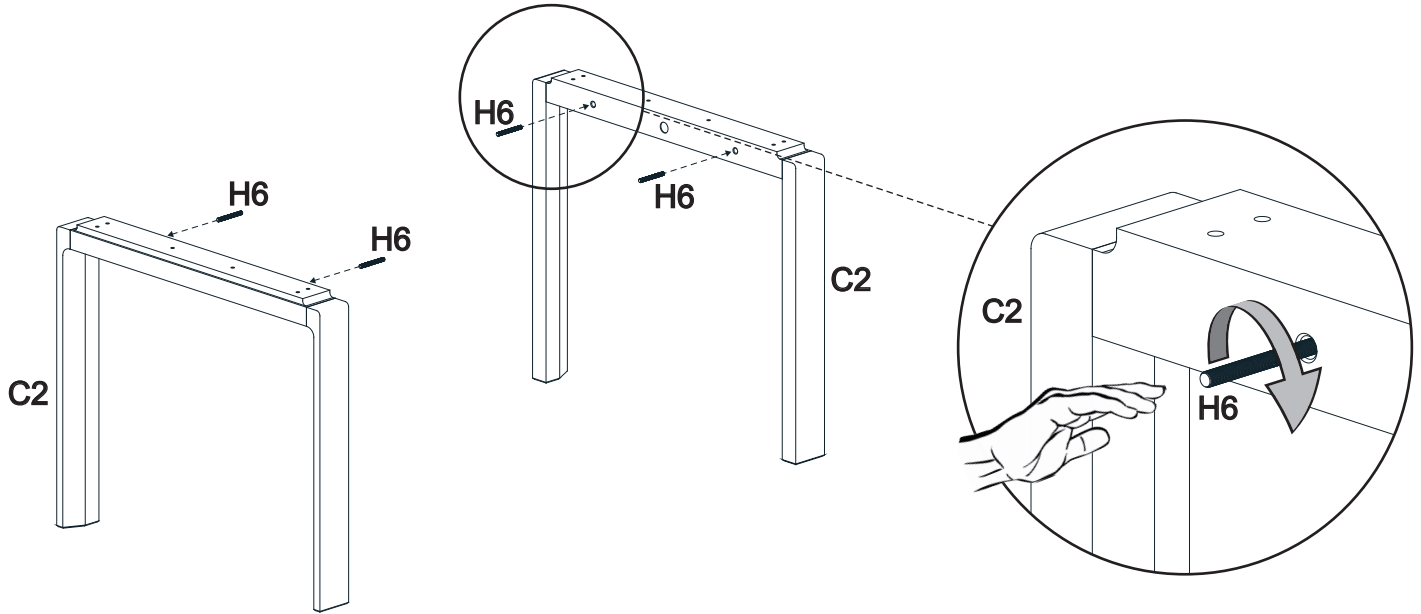
Step 5 - Attach wooden dowels to bottom frame.

Place **4x wooden dowels H1** to **bottom frame** by using a **mallet** as shown below.



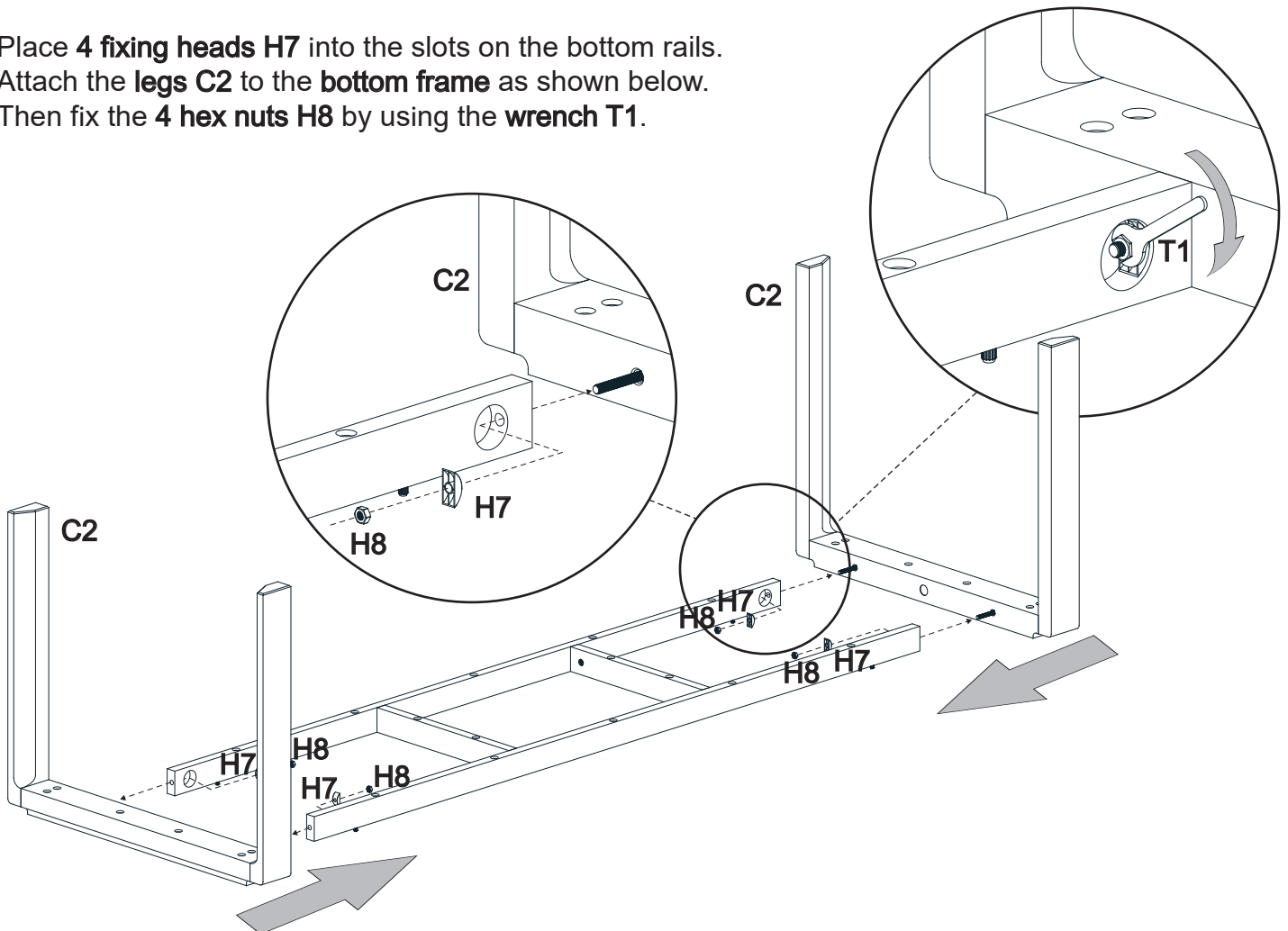
Step 6 - Attach headless bolts to leg frames.

Fix 4 headless bolts H6 to the leg frames C2 by hand.



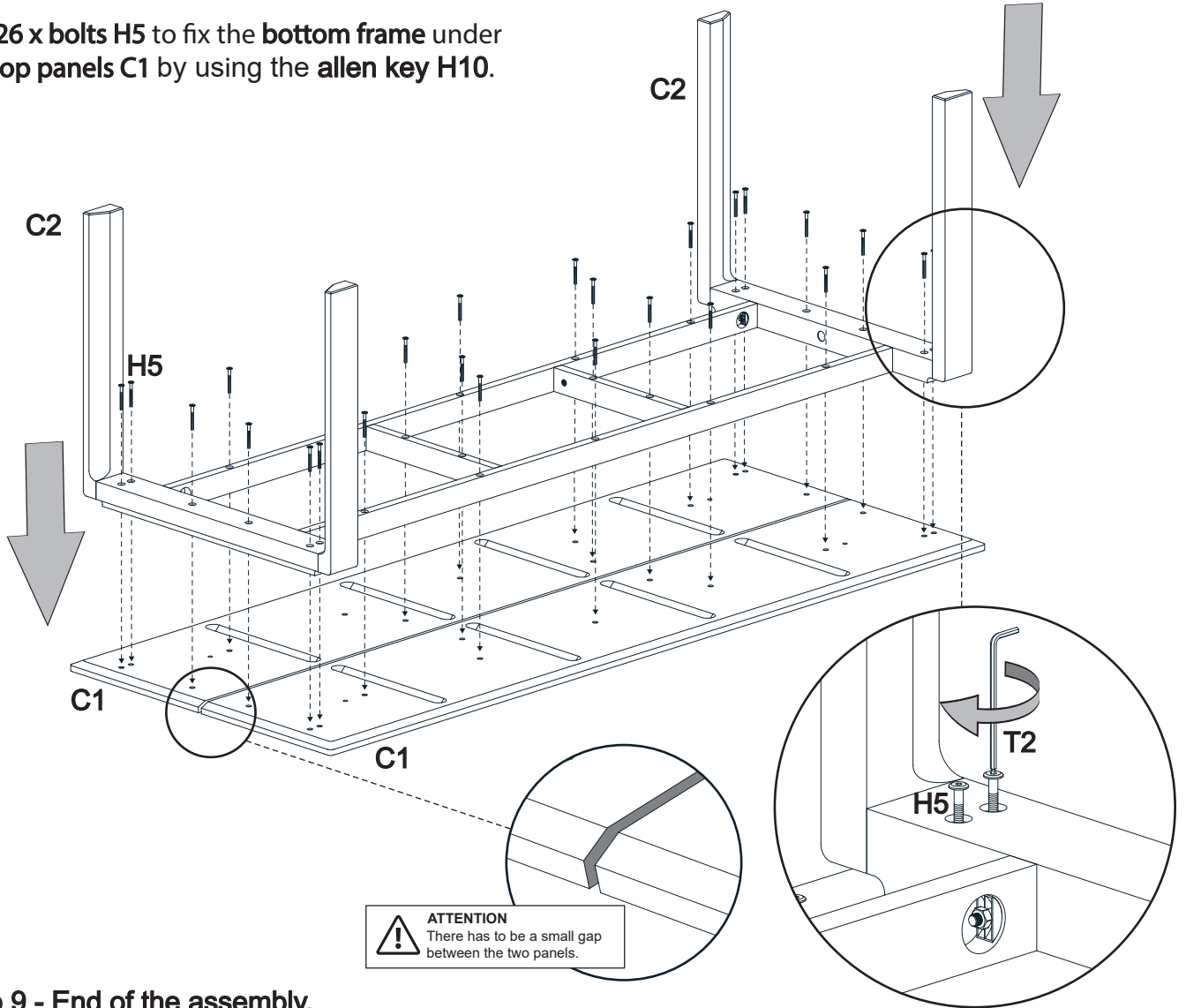
Step 7 - Attach legs to the bottom frame

Place 4 fixing heads H7 into the slots on the bottom rails. Attach the legs C2 to the bottom frame as shown below. Then fix the 4 hex nuts H8 by using the wrench T1.



Step 8 - Fix the bottom frame and legs by using bolts.

Use **26 x bolts H5** to fix the **bottom frame** under the **top panels C1** by using the **allen key H10**.



Step 9 - End of the assembly.

Lift the unit to standing position carefully.

